



U.S. Energy Information
Administration



Weekly Petroleum Status Report

Tables, Charts, and Comments

Latest Data Update January 13, 2023

Provided by Fundamental Analytics

EIA Weekly Petroleum Status Report January 13, 2023 Update

EIA Weekly Petroleum Summary	1
Table: Stocks Summary	2
Table: Stocks by PADD	3
Table: Crude Runs	4
Table: Refinery Runs	5
.	5
Crude Oil Stocks	6
With 5 Year Range	6
Total Crude Stocks with NYMEX WTI Prices	7
Time Series Plots	7
Total Crude Stocks dif52 to Previous Year with Crude Prices	8
Time Series Plots	8
Cushing Crude Oil Stocks	9
With 5 Year Range	9
PADD 2 Crude Oil Stocks	10
With 5 Year Range	10
PADD 3 Crude Oil Stocks	11
With 5 Year Range	11
Total Crude Oil Production	12
Time Series Plot	12
Crude Oil Stocks Days Forward Supply	13
With 5 Year Range	13
Total Petroleum Stocks	14
With 5 Year Range	14
Total Crude Imports	15
With 5 Year Range	15
Refinery Utilization	16
With 5 Year Range	16
Crude Runs	17

With 5 Year Range	17
Total Crude Oil Exports with Quarterly Averages	18
.....	18
Gasoline 2022 Year to Date Table	19
.....	19
Total Gasoline Stocks	22
With 5 Year Range	22
Gasoline Production	23
With 5 Year Range	23
Gasoline Imports	24
With 5 Year Range	24
Gasoline Demand	25
With 5 Year Range	25
Gasoline Days Forward Supply	26
With 5 Year Range	26
PADD 1 Gasoline Stocks	27
With 5 Year Range	27
PADD 1 Gasoline Production	28
With 5 Year Range	28
PADD 1 Gasoline Demand	29
With 5 Year Range	29
PADD 1 Gasoline Days Forward Supply	30
With 5 Year Range	30
Distillates 2022 Year to Date Table	31
.....	31
Distillates Stocks	34
With 5 Year Range	34
Distillates Production	35
With 5 Year Range	35
Distillates Demand	36
With 5 Year Range	36
Distillates Days Forward Supply	37
With 5 Year Range	37
Distillates Exports	38
With 5 Year Range	38

EIA Petroleum Stocks

(Million Barrels)	Current Week	Change	Week Ago	Year Ago	Difference
Crude Oil	819.6	8.4	811.2	1,005.8	-186.6
Commercial	448.0	8.4	439.6	413.8	34.2
SPR	371.6	-0.0	371.6	592.0	-220.4
Total Motor Gasoline	230.3	3.5	226.8	246.6	-16.3
Conventional	16.7	-0.5	17.2	19.7	-3.0
Blending Components	213.6	4.0	209.6	226.9	-13.3
Fuel Ethanol	23.4	-0.4	23.8	23.6	-0.2
Kerosene-Type Jet Fuel	34.4	0.5	33.9	34.7	-0.3
Distillate Fuel Oil	115.8	-1.9	117.7	128.0	-12.2
15 ppm sulfur and under	105.6	-1.5	107.1	118.1	-12.5
>15 ppm to 500 ppm sulfur	2.3	-0.2	2.4	2.5	-0.2
>500 ppm sulfur	7.9	-0.3	8.2	7.4	0.5
Residual Fuel Oil	30.6	1.0	29.7	26.6	4.0
Propane/Propylene	76.6	-2.0	78.6	58.7	17.9
Other Oils	271.0	-6.6	277.6	256.8	14.2
Unfinished Oils	82.3	-2.6	85.0	79.8	2.5

Stocks Summary

Million Barrels	Latest Data	Week Change	Last Week	Last Year	Diff To Last Year	5-Year Average	Diff To 5-Yr Average
Crude	448.0	8.4	439.6	413.8	34.2	437.0	11.0
Gasoline	230.3	3.5	226.8	246.6	-16.4	251.1	-20.8
Distillates	115.8	-1.9	117.7	128.0	-12.2	144.0	-28.2
Crude Runs (/day)	14.9	0.2	14.7	15.5	-0.6	16.1	-1.3
Refinery Utilization (%)	85.3	1.2	84.1	88.1	-2.8	89.0	-3.7

Stocks by PADD

	Crude Stocks	Week Chg	5 Year Average	Last Year	Gasoline Stocks	Week Chg	5 Year Average	Last Year	Distillate Stocks	Week Chg	5 Year Average	Last Year
PADD 1	7.7	-0.3	10.5	6.7	56.9	-0.5	65.8	64.5	32.7	-1.6	47.7	41.0
PADD 2	115.7	5.7	126.6	113.7	46.6	-0.6	56.9	56.6	27.8	-0.9	32.0	31.1
PADD 3	250.9	1.4	228.0	222.5	85.3	4.4	87.6	85.7	38.2	0.5	45.8	39.3
PADD 4	24.9	0.1	22.6	23.3	7.1	-0.2	8.2	8.7	3.6	-0.1	4.2	4.3
PADD 5	48.8	1.5	49.2	47.6	34.4	0.3	32.6	31.1	13.4	0.2	14.3	12.4
Total	448.0	8.4	437.0	413.8	230.3	3.5	251.1	246.6	115.8	-1.9	144.0	128.0

	RBOB Stocks	Week Chg	5 Year Average	Last Year	Residual Stocks	Week Chg	5 Year Average	Last Year	Jet Stocks	Week Chg	5 Year Average	Last Year
PADD 1	19.6	0.3	13.5	17.0	5.7	0.2	6.6	4.4	8.0	-0.3	9.0	7.0
PADD 2	5.5	0.4	6.3	6.8	1.2	-0.0	1.1	1.0	6.2	-0.2	6.6	6.2
PADD 3	11.8	0.1	8.0	11.6	18.6	0.8	17.3	16.1	10.3	0.7	13.6	12.5
PADD 4	0.0	0.0	0.0	0.0	0.2	0.0	0.2	0.2	0.7	-0.0	0.8	0.9
PADD 5	11.5	-0.7	10.0	10.5	5.0	-0.0	4.8	4.9	9.1	0.4	9.7	8.0
Total	48.5	0.2	37.8	45.9	30.6	1.0	30.0	26.6	34.4	0.5	39.7	34.7

Crude Runs

kbd	Latest Data	Last Week	Week Change	Last Year	Diff to Last Year	5 Year Average	Diff to 5 Year Average
PADD 1	821	920	99	707	114	839	-18
PADD 2	3,629	3,711	82	3,931	-302	3,820	-191
PADD 3	8,000	8,187	187	8,205	-205	8,641	-641
PADD 4	396	331	-65	571	-175	604	-208
PADD 5	2,007	1,906	-101	2,040	-33	2,217	-210
Total	14,853	15,055	202	15,453	-600	16,120	-1,267

Refinery Runs

kbd	Latest Data	Last Week	Week Change	Last Year	Diff to Last Year	5 Year Average	Diff to 5 Year Average
PADD 1	848	915	67	726	122	861	-13
PADD 2	3,638	3,717	79	3,938	-300	3,827	-189
PADD 3	8,368	8,623	255	8,550	-182	8,825	-457
PADD 4	393	316	-77	572	-179	604	-211
PADD 5	2,127	2,018	-109	2,181	-54	2,335	-208
Total	15,374	15,588	214	15,968	-594	16,454	-1,080

Total Crude Stocks

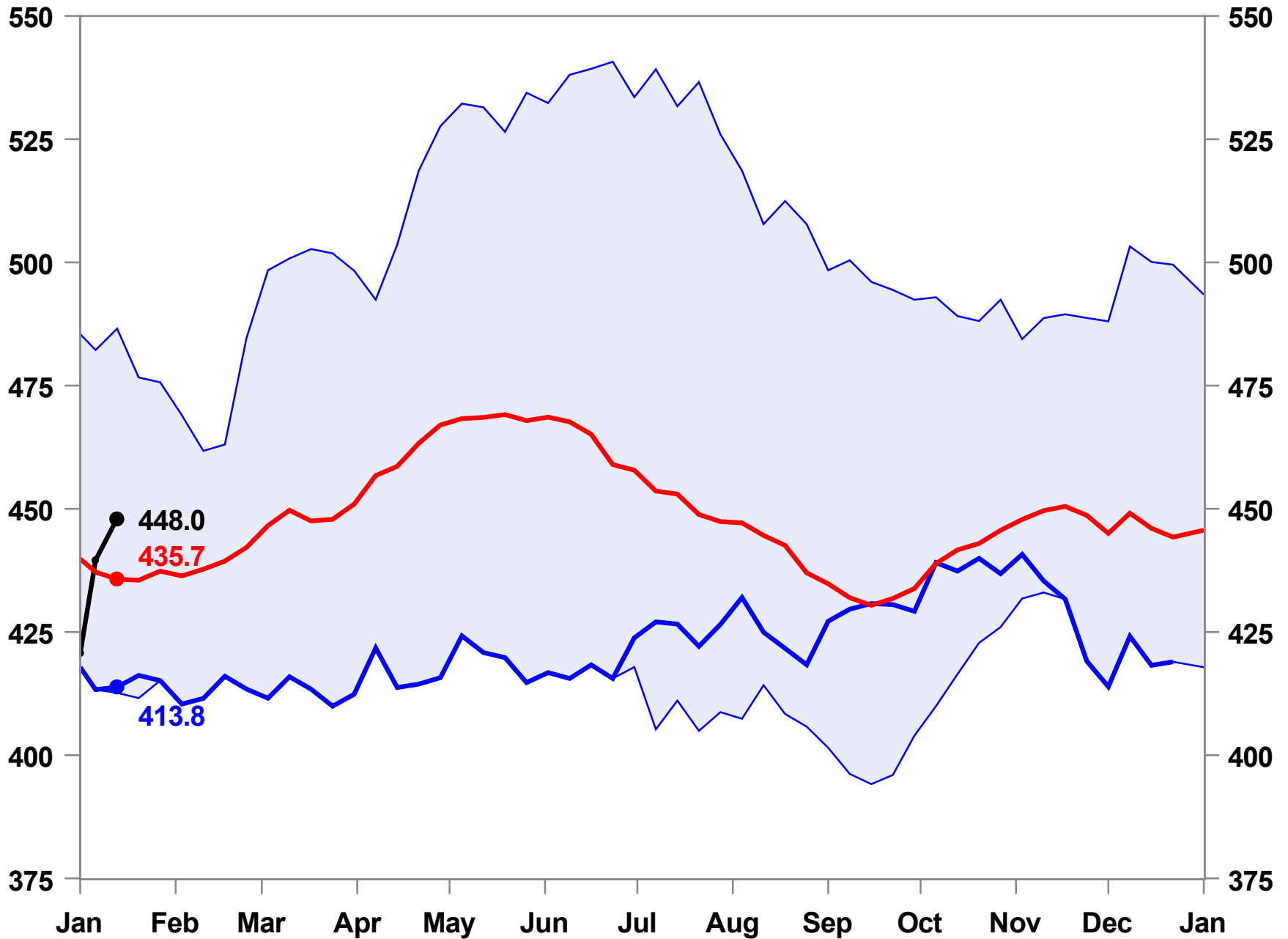
448.0 MMBBL

Week Change: 8.4 MMBBL

Week Ending: January 13, 2023

Last Year: 413.8

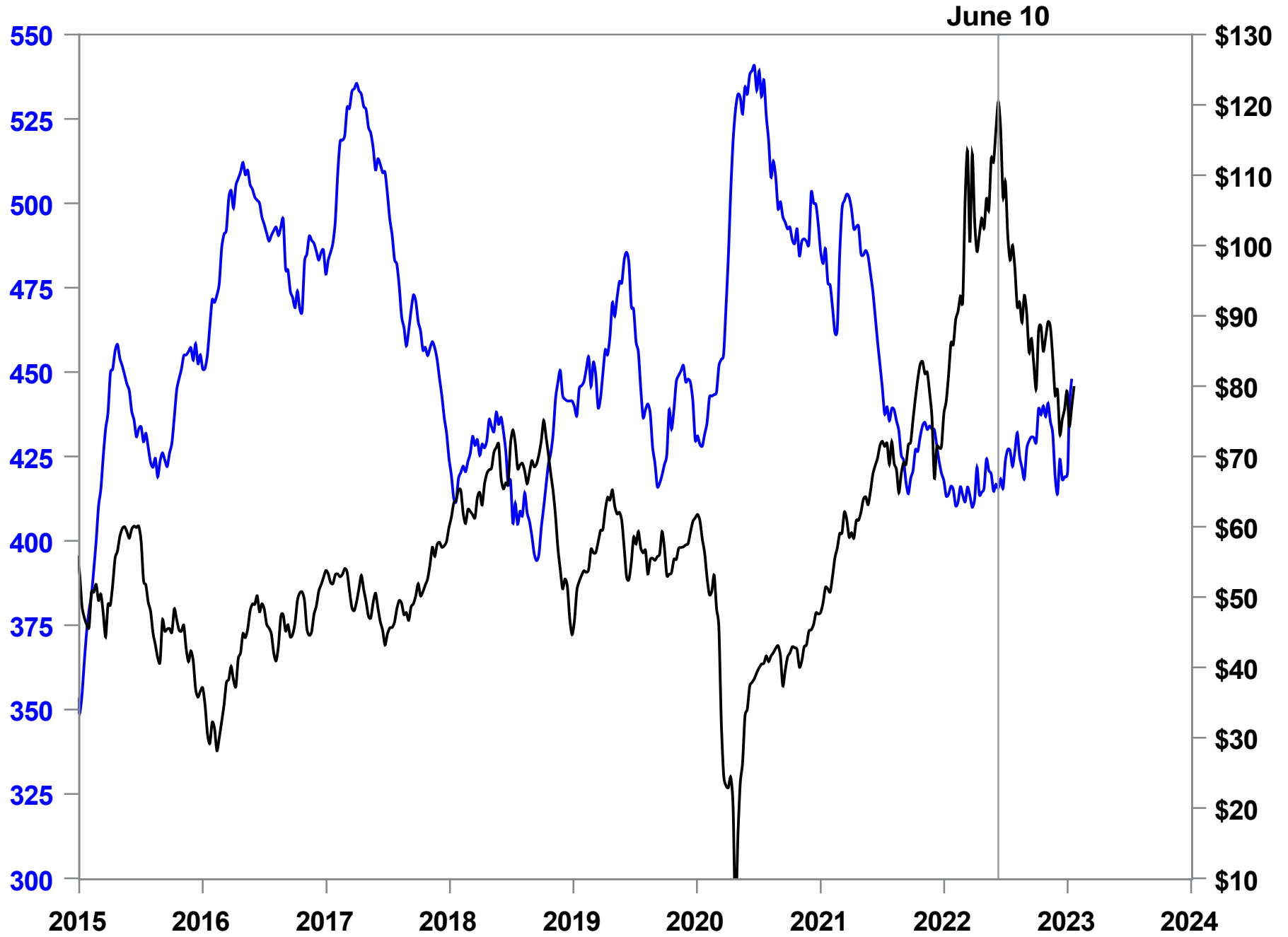
Five Year Average: 445.7



Total Crude Stocks and WTI Crude Prices

Crude Stocks

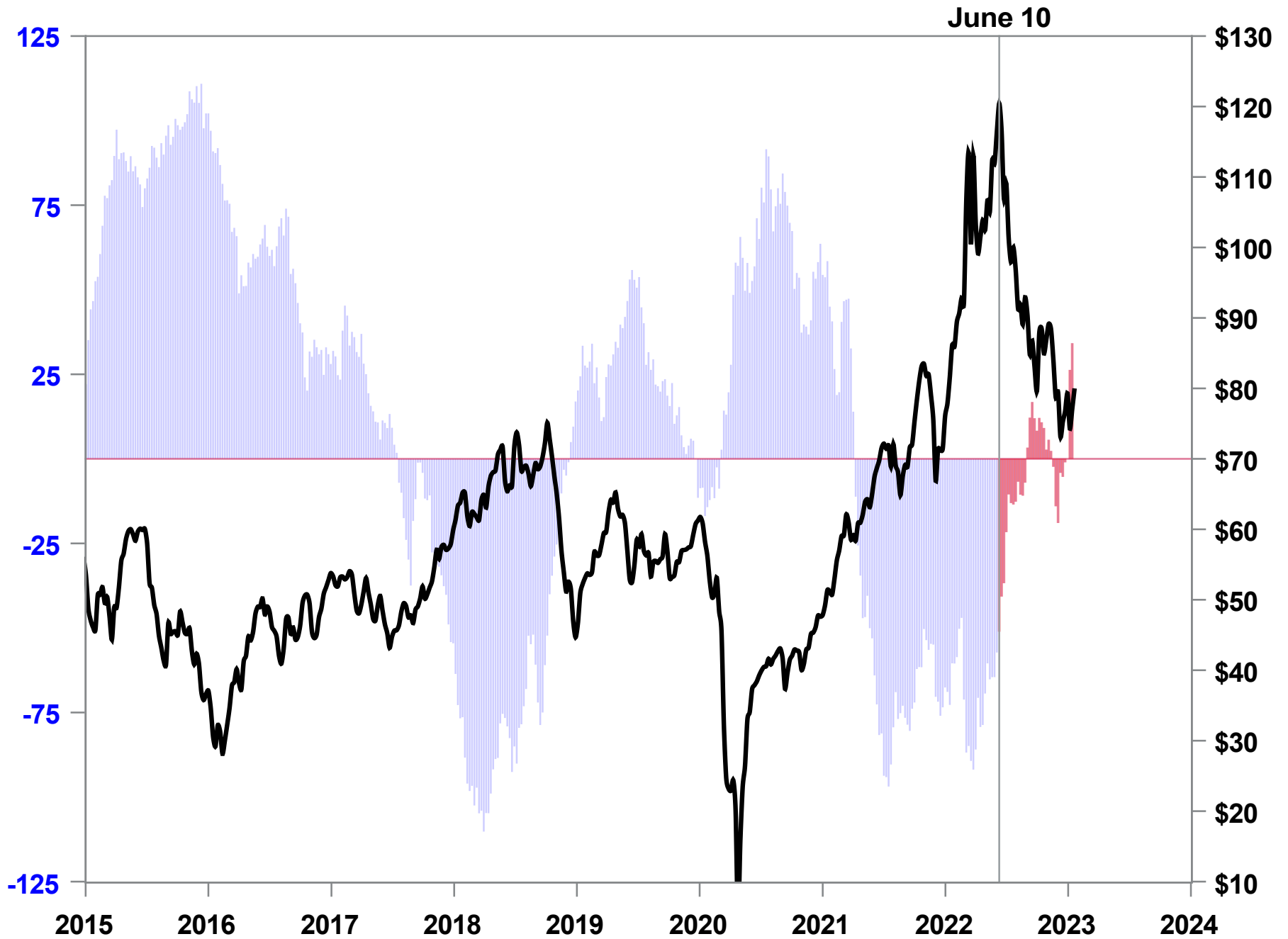
WTI Crude



Total Crude Stocks Annual dif52 and WTI Crude Prices

Crude Stocks dif52

WTI Crude Prices



Cushing Crude Stocks

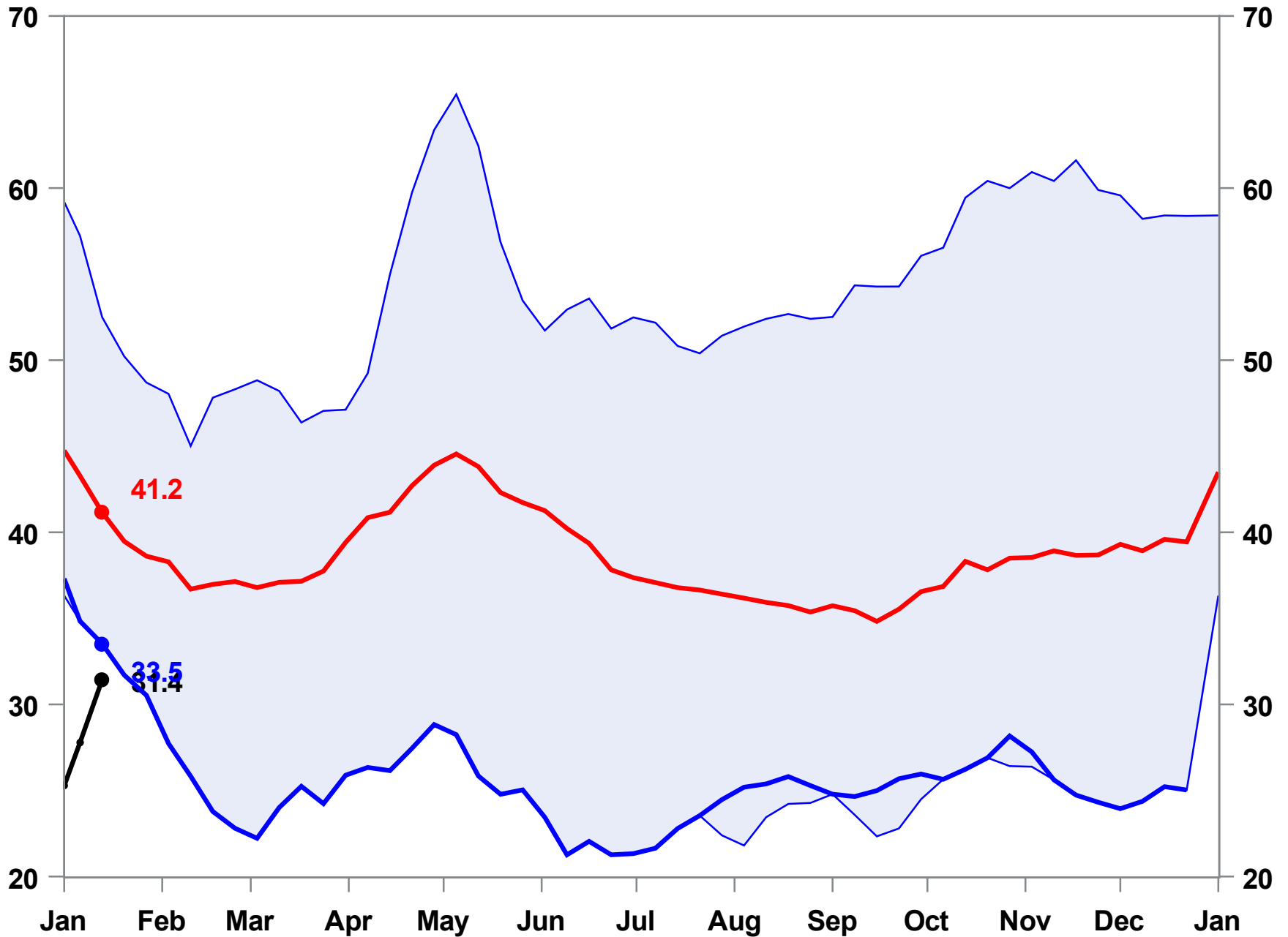
31.4 MMBBL

Week Change: 3.6 MMBBL

Week Ending: January 13, 2023

Last Year: 33.5

Five Year Average: 41.2



PADD 2 Crude Stocks

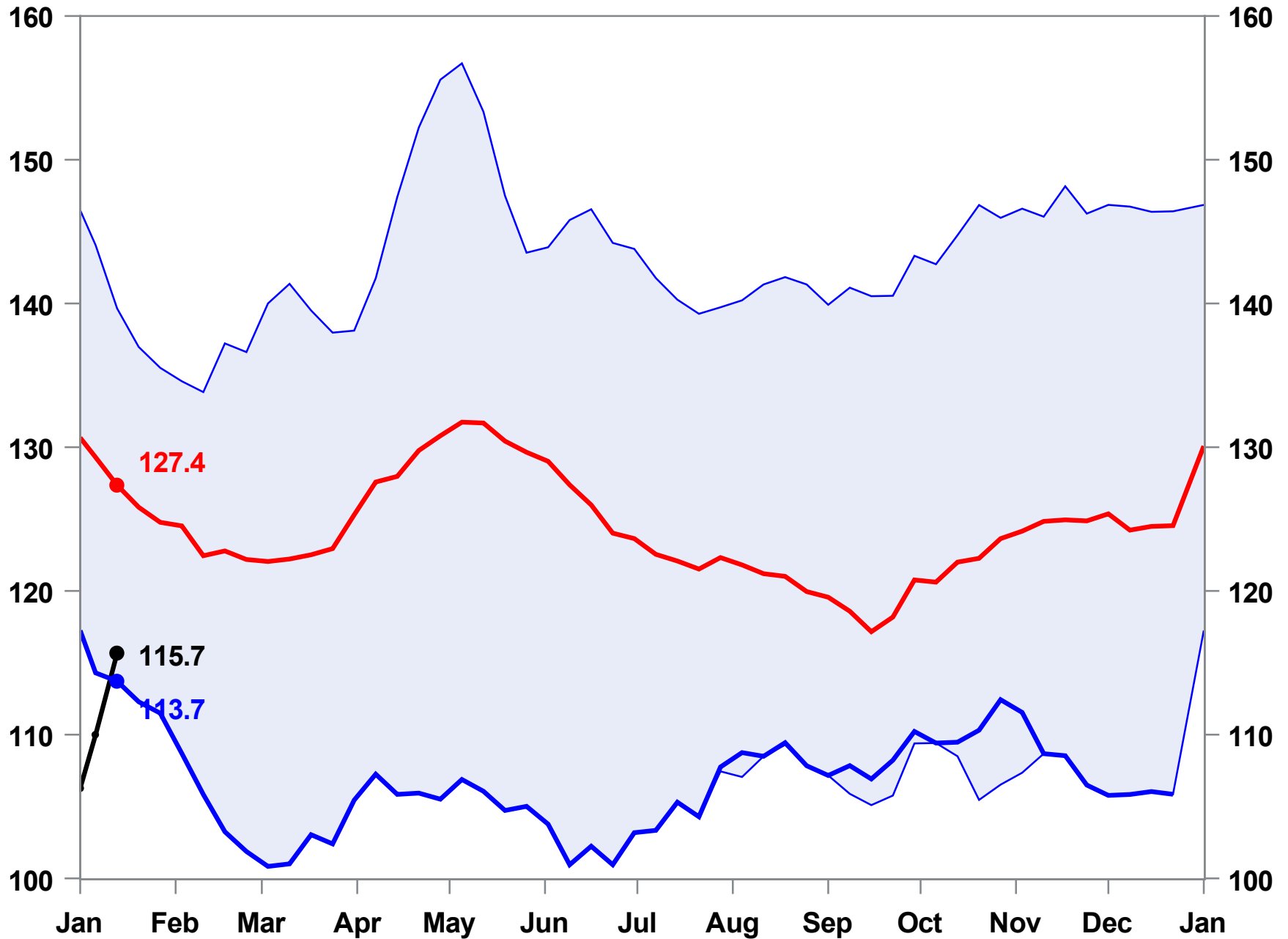
115.7 MMBBL

Week Change: 5.7 MMBBL

Week Ending: January 13, 2023

Last Year: 113.7

Five Year Average: 127.4



PADD 3 Crude Stocks

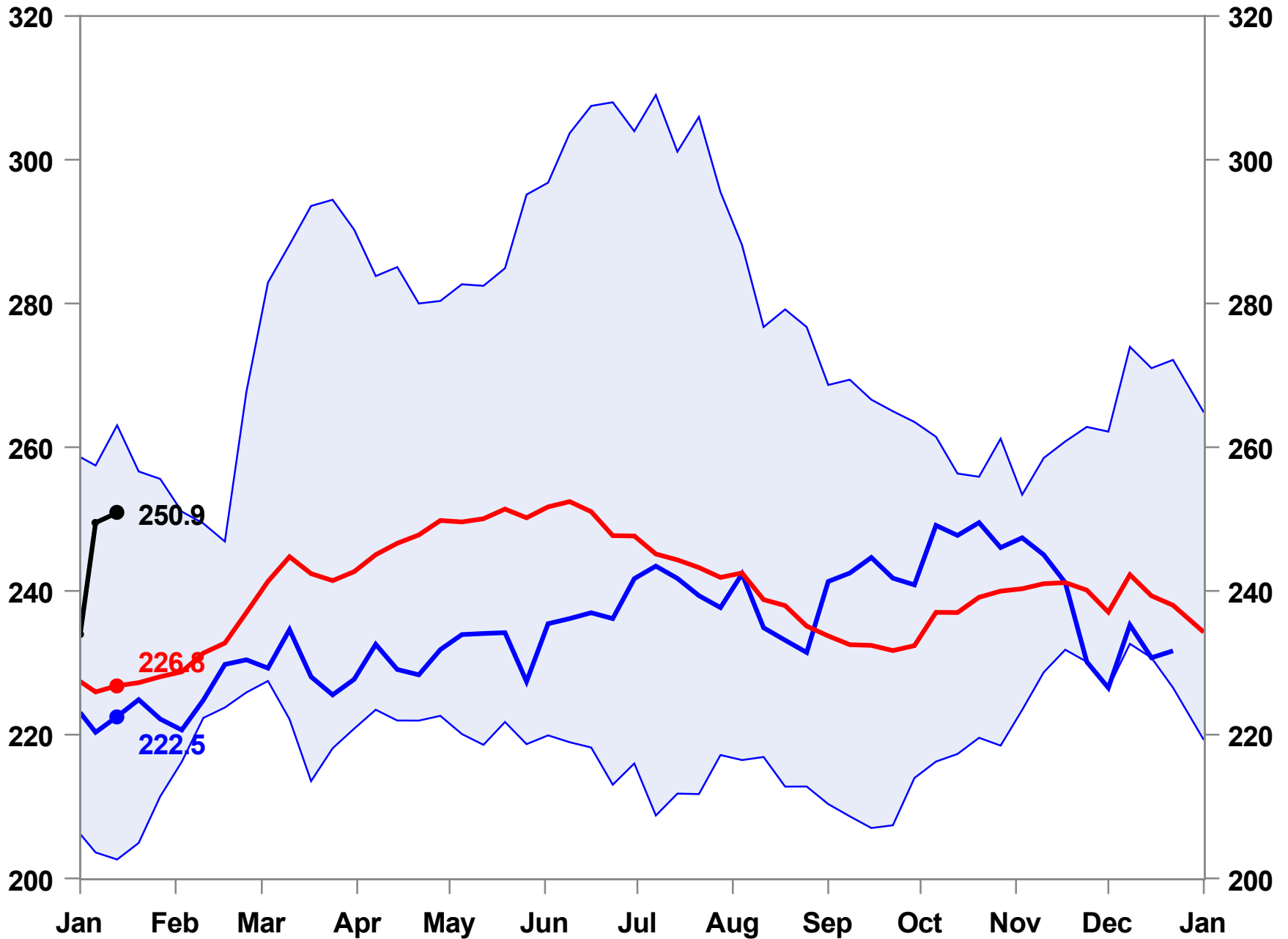
250.9 MMBBL

Week Change: 1.4 MMBBL

Week Ending: January 13, 2023

Last Year: 222.5

Five Year Average: 226.8

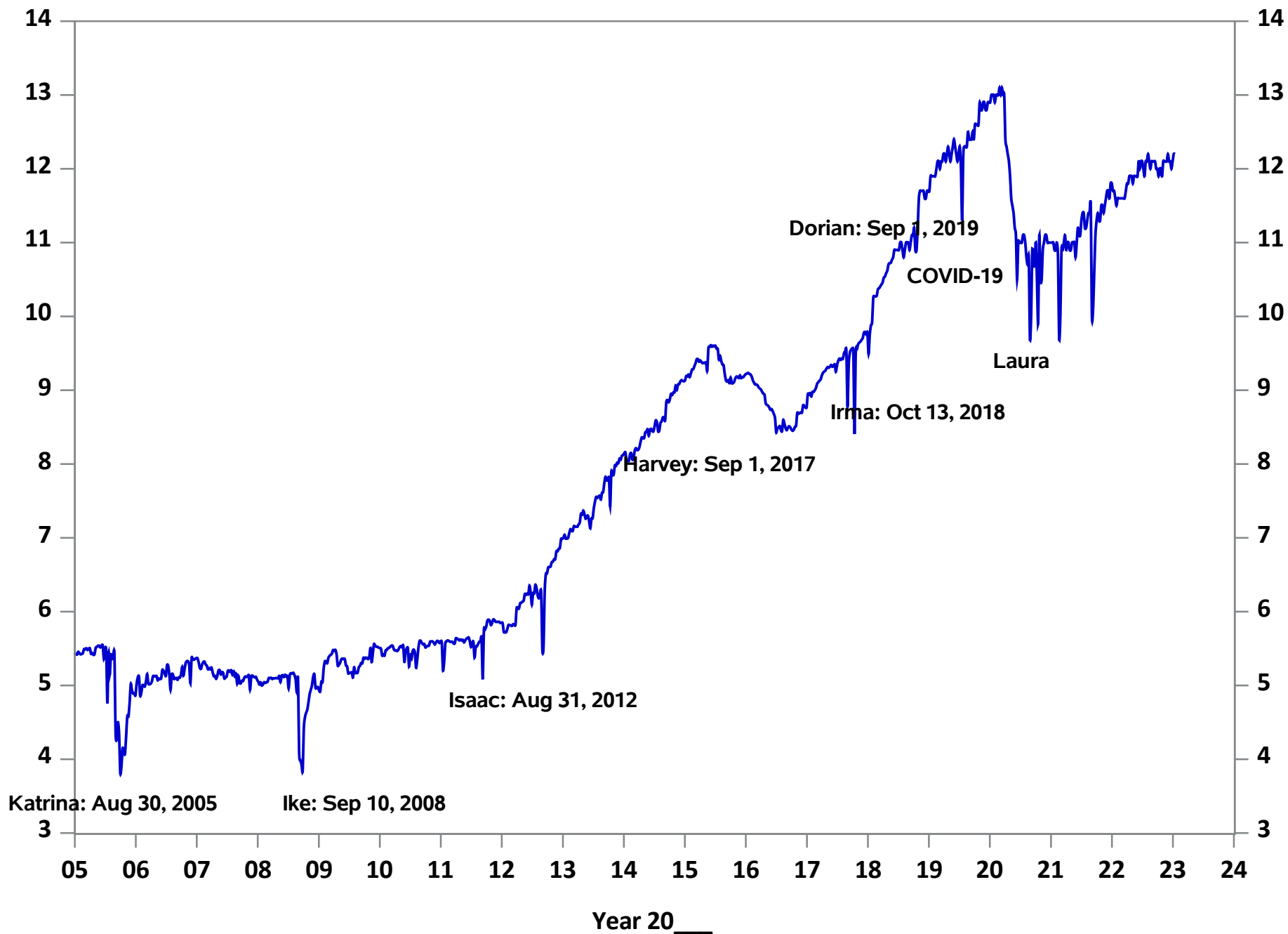


Total Crude Oil Production

12.2 MMBBL

Week Ending: January 13, 2023

Week Change: 0.0 MMBBL



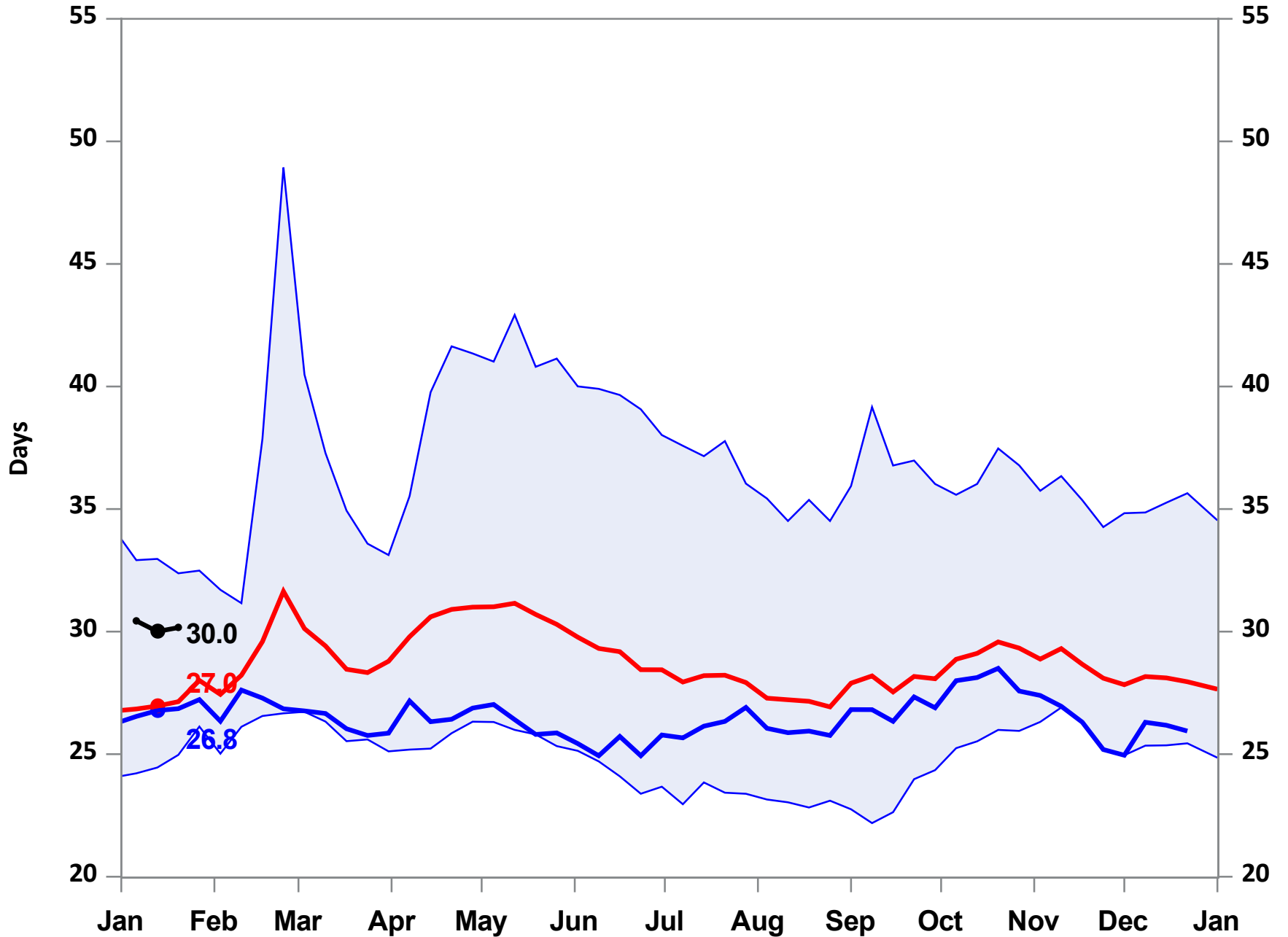
Crude Stocks Days Forward Supply

Week Ending: January 13, 2023

30.2 Days

Week Change: 0.2 Day

Last Year: 26.8



Total Petroleum Stocks

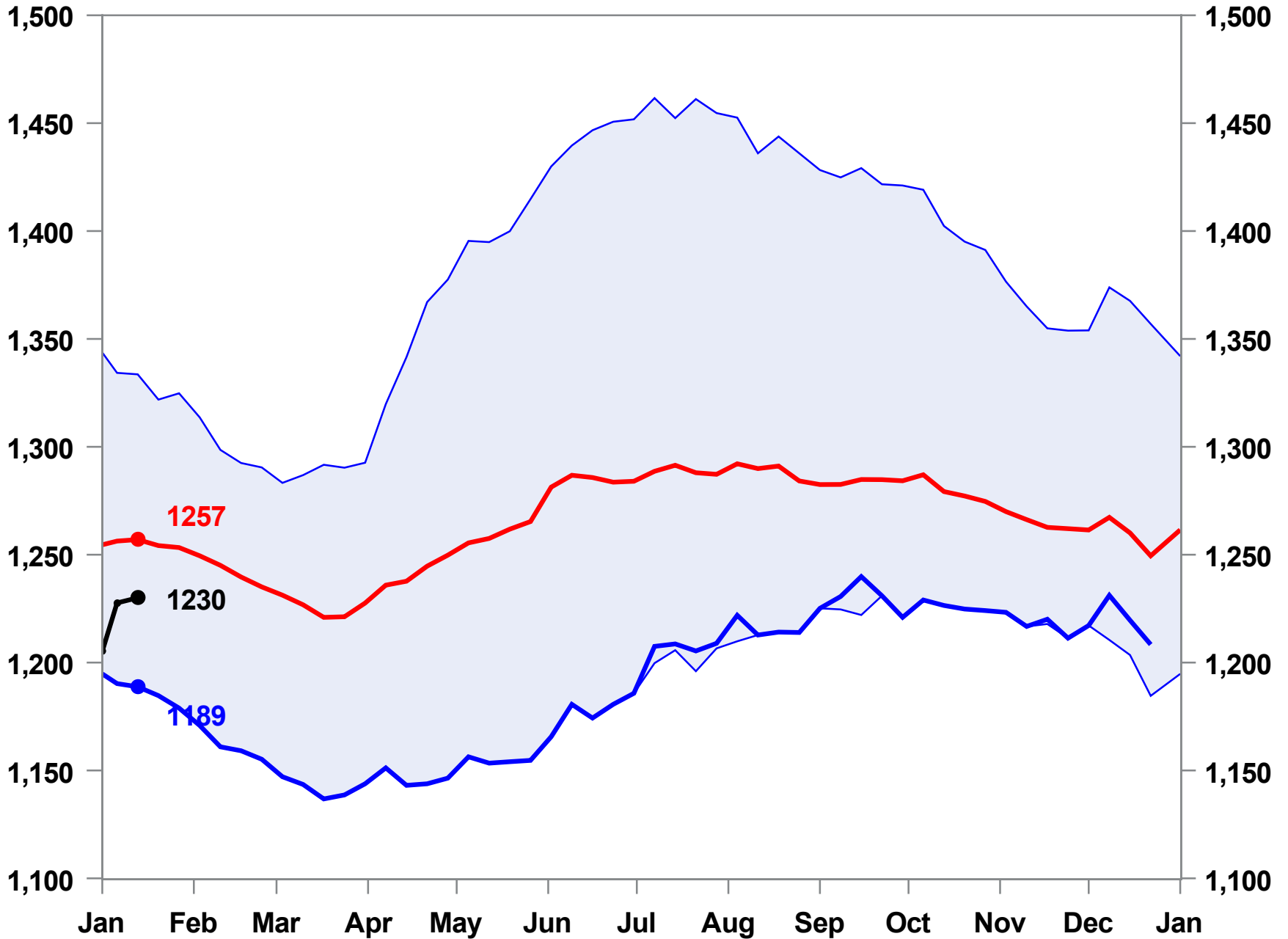
1,230 MMBBL

Week Change: 2.4 MMBBL

Week Ending: January 13, 2023

Last Year: 1188.8

Five Year Average: 1257.0

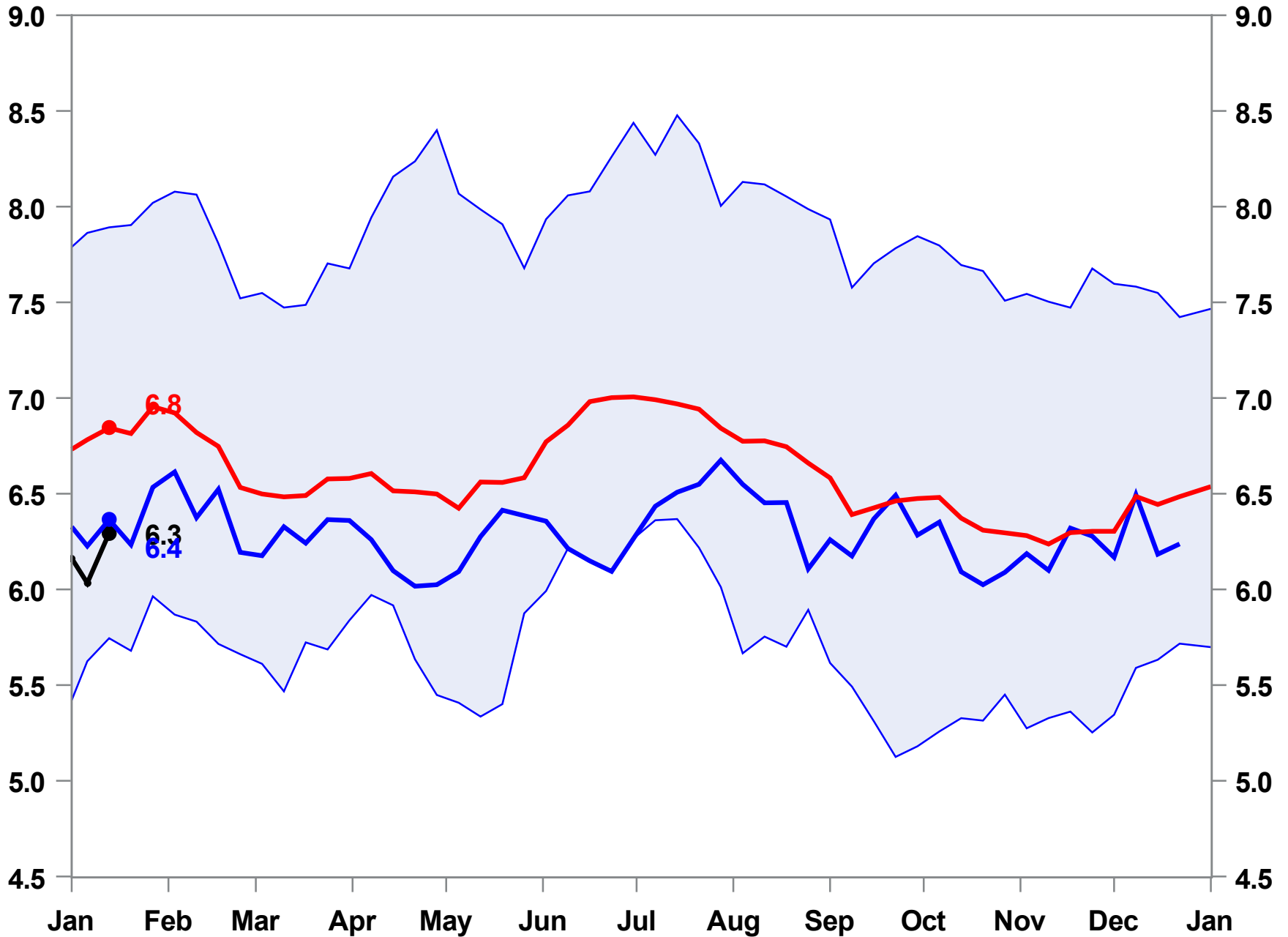


Week Ending: January 13, 2023

Total Crude Imports
6.86 MMBBL/daylag52

Week Change: 0.51 MMBB

Last Year: Five Year Average: 6.8



Refinery Utilization

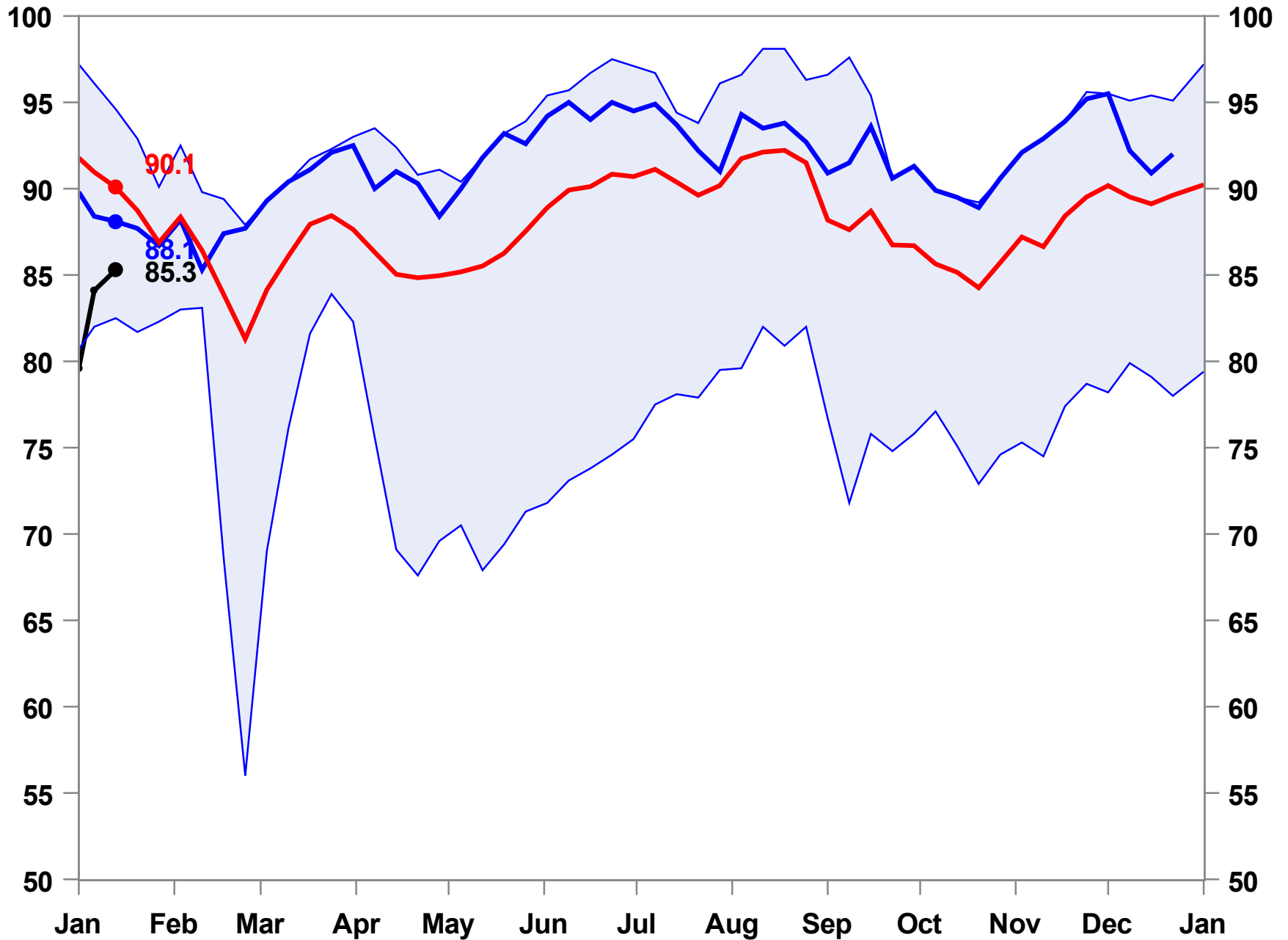
85.30 %

Week Ending: January 13, 2023

Week Change: 1.20 MMBB

Last Year: 88.1

Five Year Average: 90.1



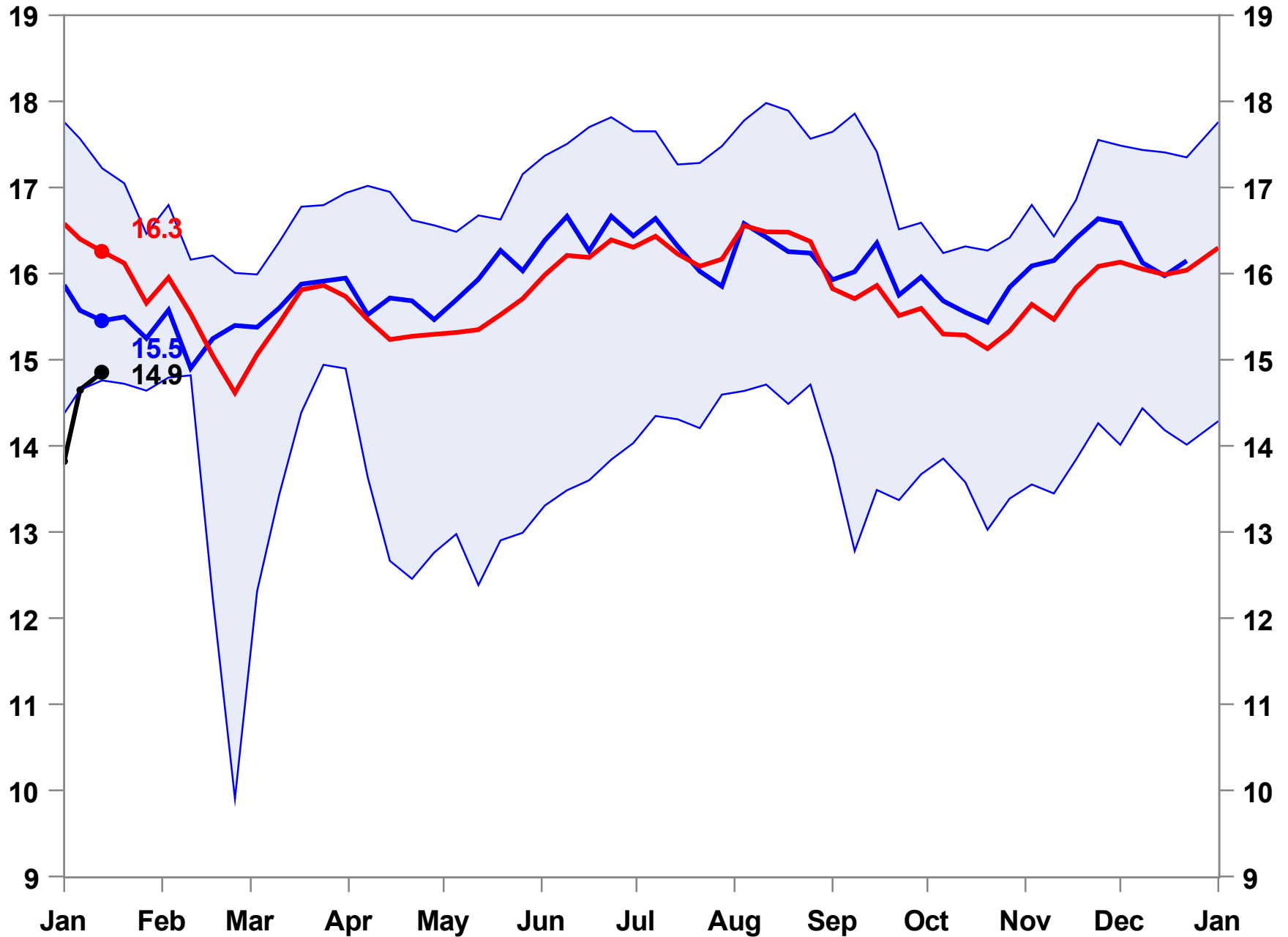
Week Ending: January 13, 2023

Crude Runs
14.85 MMBBL

Week Change: 0.20 MMBBL

Last Year: 15.5

Five Year Average: 16.3

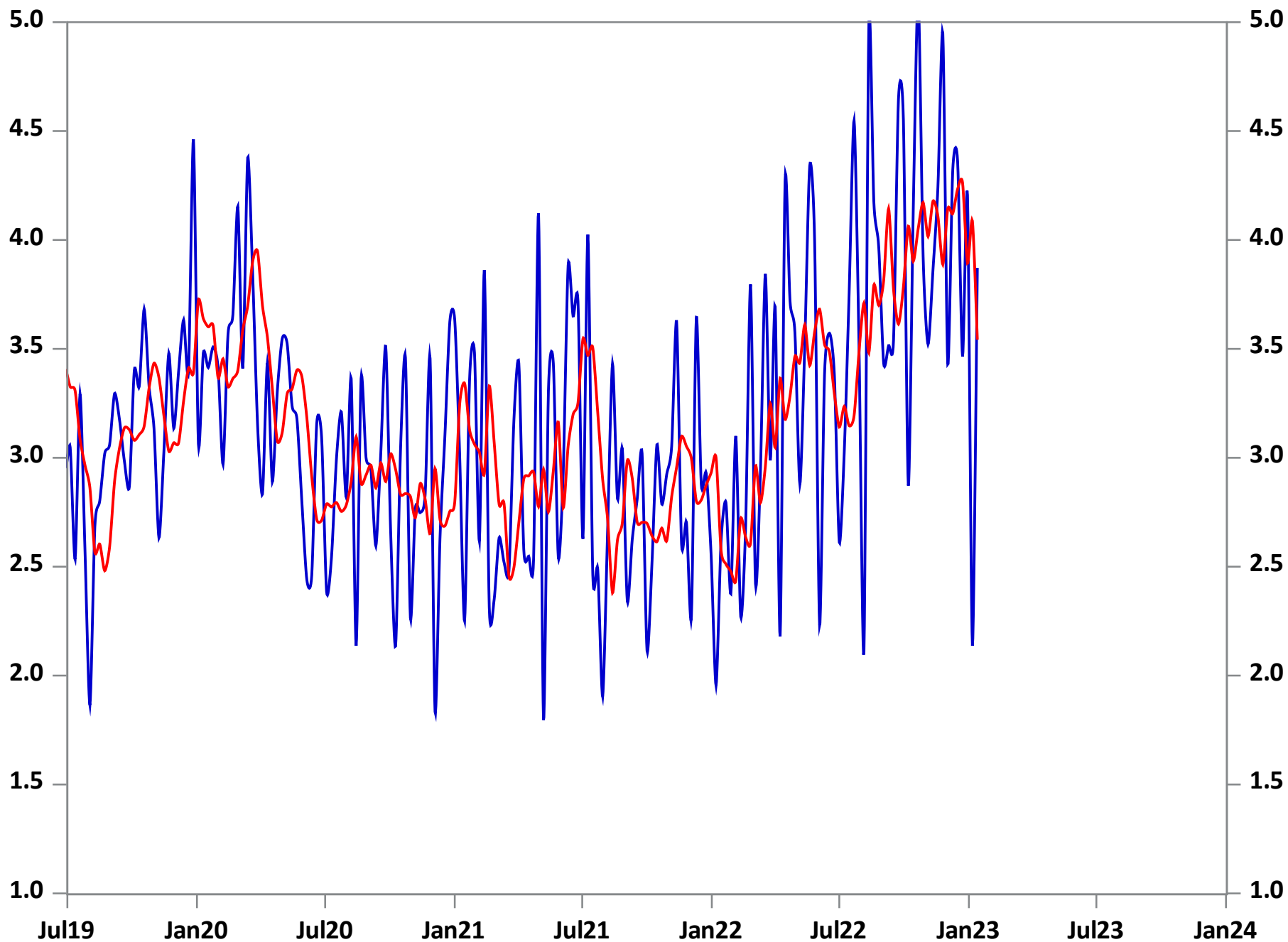


Total Crude Oil Exports with Quarterly Averages

Week Ending: January 13, 2023

3.9 MMBBL

Week Change: 1735 MMBB



2022 Year to Date Data

	MoGas Stocks	MoGas Production	MoGas Demand	Days Forward Supply	PADD 1 MoGas Stocks	PADD 1 MoGas Production	PADD 1 MoGas Demand	PADD 1 Days Forward Supply
07JAN	240.7	8.6			63.9	8.6		
14JAN	246.6	8.7	8.2	29.9	64.5	8.7	3.1	20.9
21JAN	247.9	8.9	9.0	27.4	64.4	8.9	3.1	20.9
28JAN	250.0	8.7	8.8	28.5	65.8	8.7	3.1	21.1
04FEB	248.4	9.4	10.1	24.5	63.0	9.4	3.6	17.4
11FEB	247.1	8.8	9.6	25.8	63.1	8.8	3.4	18.3
18FEB	246.5	9.3	9.8	25.2	62.2	9.3	3.6	17.5
25FEB	246.0	9.3	9.9	24.7	60.8	9.3	3.7	16.5
04MAR	244.6	9.6	10.5	23.2	60.6	9.6	3.7	16.3
11MAR	241.0	9.4	10.4	23.1	60.7	9.4	3.5	17.3
18MAR	238.0	9.8	10.9	21.7	57.2	9.8	4.0	14.3
25MAR	238.8	9.1	9.6	24.9	57.7	9.1	3.4	16.7
01APR	236.8	9.1	9.9	23.9	56.4	9.1	3.6	15.5
08APR	233.1	9.5	10.5	22.3	55.5	9.5	3.6	15.5
15APR	232.4	9.8	10.5	22.0	53.8	9.8	3.7	14.4
22APR	230.8	9.5	10.6	21.8	50.7	9.5	4.2	12.2
29APR	228.6	9.7	11.1	20.5	52.3	9.7	3.8	13.9
06MAY	225.0	9.7	10.9	20.6	51.8	9.7	3.9	13.3
13MAY	220.2	9.6	11.1	19.8	51.4	9.6	3.8	13.7

2022 Year to Date Data

	MoGas Stocks	MoGas Production	MoGas Demand	Days Forward Supply	PADD 1 MoGas Stocks	PADD 1 MoGas Production	PADD 1 MoGas Demand	PADD 1 Days Forward Supply
20MAY	219.7	9.4	10.3	21.3	52.1	9.4	3.8	13.6
27MAY	219.0	10.0	11.0	20.0	51.3	10.0	4.1	12.4
03JUN	218.2	10.0	11.3	19.3	53.2	10.0	4.0	13.4
10JUN	221.6	9.5	9.8	22.5	53.4	9.5	3.8	14.1
17JUN	219.0	9.4	10.5	20.8	52.3	9.4	4.0	13.1
24JUN	221.6	9.5	9.9	22.3	53.4	9.5	3.7	14.6
01JUL	219.1	10.3	11.6	18.8	52.5	10.3	4.1	12.9
08JUL	224.9	8.9	8.8	25.5	55.2	8.9	3.4	16.3
15JUL	228.4	9.4	9.7	23.5	54.7	9.4	3.8	14.5
22JUL	225.1	9.7	10.7	21.0	52.7	9.7	4.0	13.2
29JUL	225.3	9.3	9.9	22.8	51.7	9.3	3.9	13.4
05AUG	220.3	10.2	11.5	19.2	50.7	10.2	3.9	12.9
12AUG	215.7	10.0	11.3	19.0	50.9	10.0	4.0	12.8
19AUG	215.6	9.4	10.0	21.5	53.6	9.4	3.4	15.9
26AUG	214.5	9.8	10.5	20.4	51.9	9.8	4.0	13.1
02SEP	214.8	9.9	10.8	19.8	53.4	9.9	3.9	13.7
09SEP	213.0	9.5	10.2	20.8	56.0	9.5	3.2	17.3
16SEP	214.6	9.5	10.0	21.4	56.4	9.5	3.6	15.6
23SEP	212.2	9.6	10.5	20.2	55.2	9.6	3.8	14.3

2022 Year to Date Data

	MoGas Stocks	MoGas Production	MoGas Demand	Days Forward Supply	PADD 1 MoGas Stocks	PADD 1 MoGas Production	PADD 1 MoGas Demand	PADD 1 Days Forward Supply
30SEP	207.5	10.0	11.2	18.6	54.2	10.0	3.7	14.6
07OCT	209.5	9.2	9.6	21.9	54.6	9.2	3.6	15.2
14OCT	209.4	9.4	9.9	21.2	54.2	9.4	3.6	15.1
21OCT	207.9	9.4	10.3	20.2	51.1	9.4	4.1	12.4
28OCT	206.6	9.5	9.9	20.8	50.2	9.5	3.6	14.0
04NOV	205.7	9.8	10.4	19.8	49.1	9.8	3.7	13.2
11NOV	207.9	9.8	10.0	20.7	49.3	9.8	3.6	13.6
18NOV	211.0	9.2	9.3	22.7	47.1	9.2	3.8	12.3
25NOV	213.8	9.4	9.5	22.5	49.2	9.4	3.3	14.8
02DEC	219.1	9.1	8.8	24.8	50.6	9.1	3.3	15.3
09DEC	223.6	9.2	9.3	23.9	52.5	9.2	3.6	14.7
16DEC	226.1	9.6	9.7	23.2	55.9	9.6	3.2	17.6
23DEC	223.0	10.1	11.1	20.0	53.8	10.1	4.0	13.6
30DEC	222.7	8.5	9.1	24.6	56.9	8.5	2.9	19.8
06JAN	226.8	8.5	8.5	26.8	57.3	8.5	3.1	18.3
13JAN	230.3	8.9	8.9	25.8	56.9	8.9	3.6	15.9

Total Gasoline Stocks

230.3 MMBBL

Week Change: 3.5 MMBBL

Week Ending: January 13, 2023

Last Year: 246.6

Five Year Average: 249.3



Gasoline Production (4-Week Moving Average Smoothing)

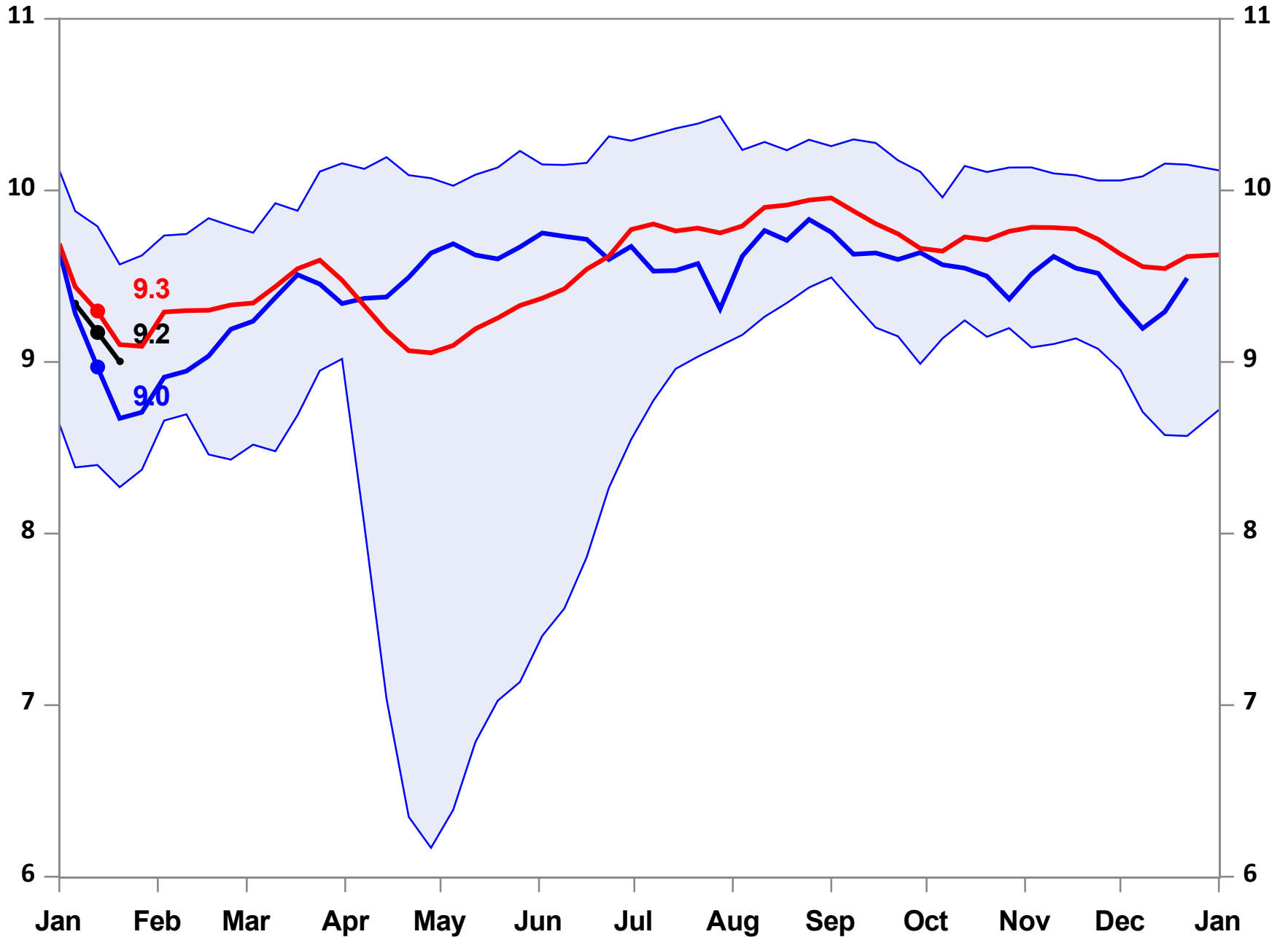
Week Ending: January 13, 2023

9.0 MMBBL

Week Change: -0.2 MMBE

Last Year: 9.0

Five Year Average: 9.3



Gasoline Imports

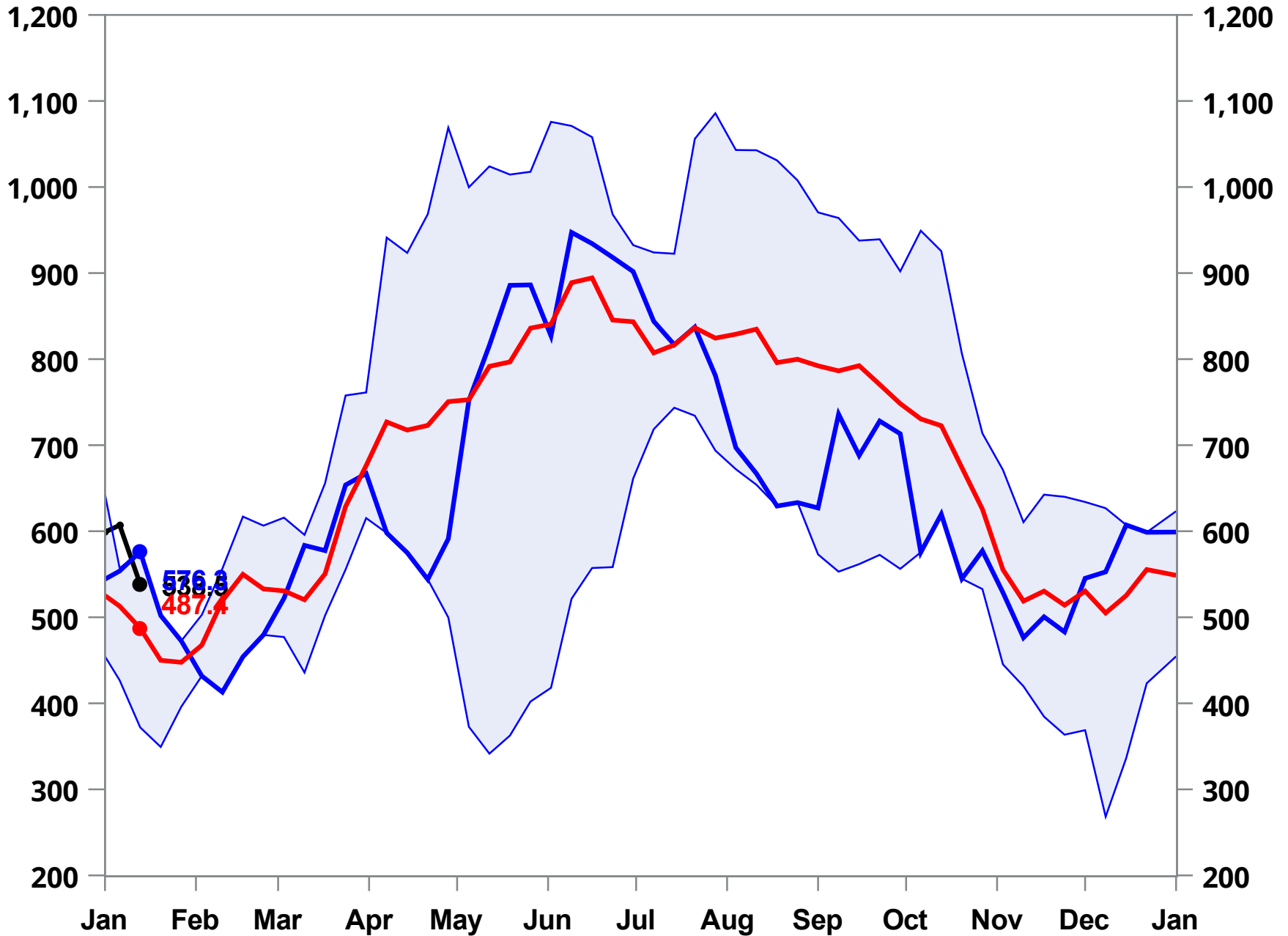
539 MMBBL

Week Change: -0.2 MMBBL

Week Ending: January 13, 2023

Last Year: 9.0

Five Year Average: 487.4



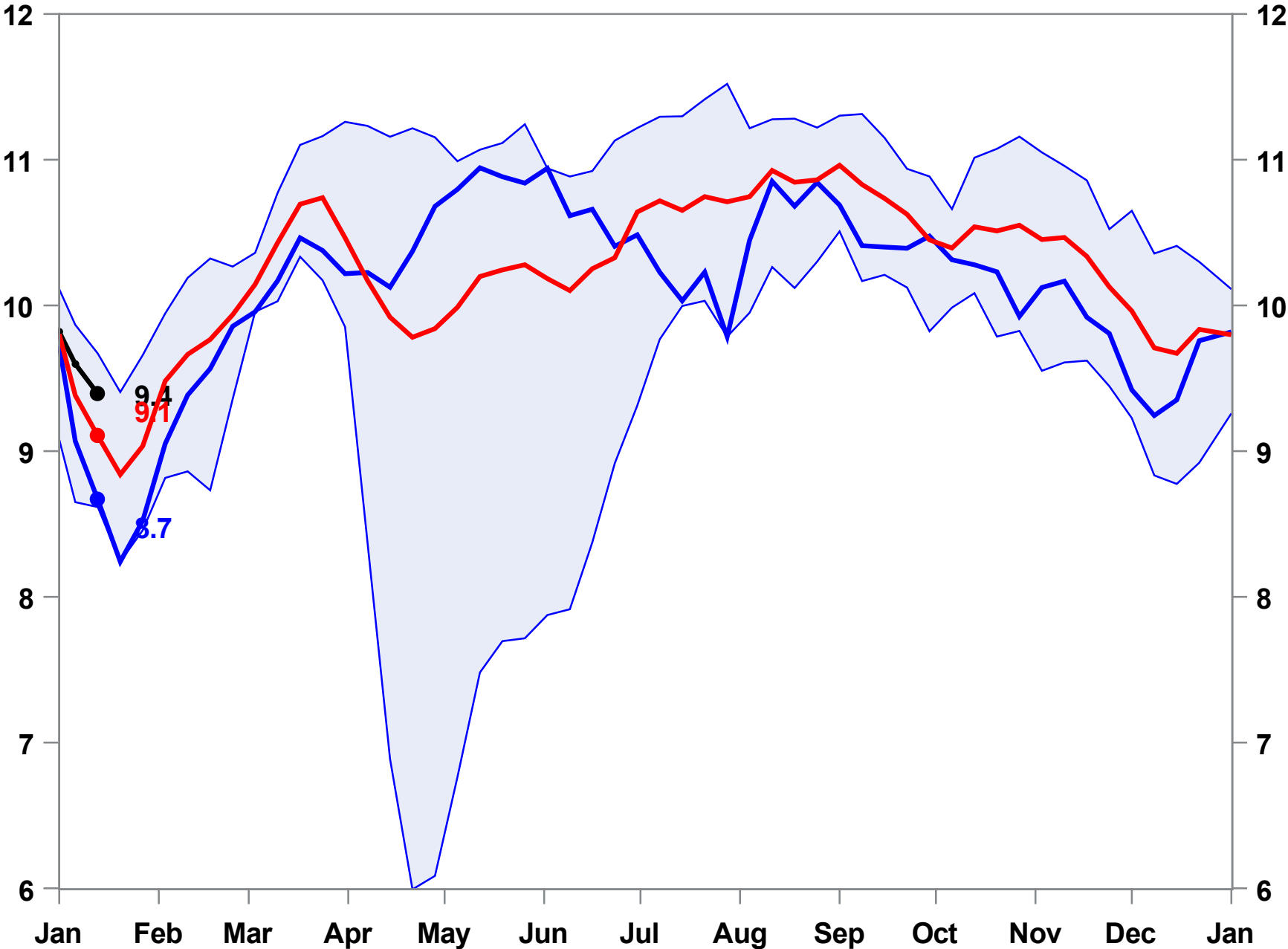
Gasoline Demand

9.4 MMBBL

Week Change: -0.20 MMBBL

Week Ending: January 13, 2023

Last Year: Five Year Average: 9.1



Gasoline Days Forward Supply (Smoothed with 4-Week Moving Average)

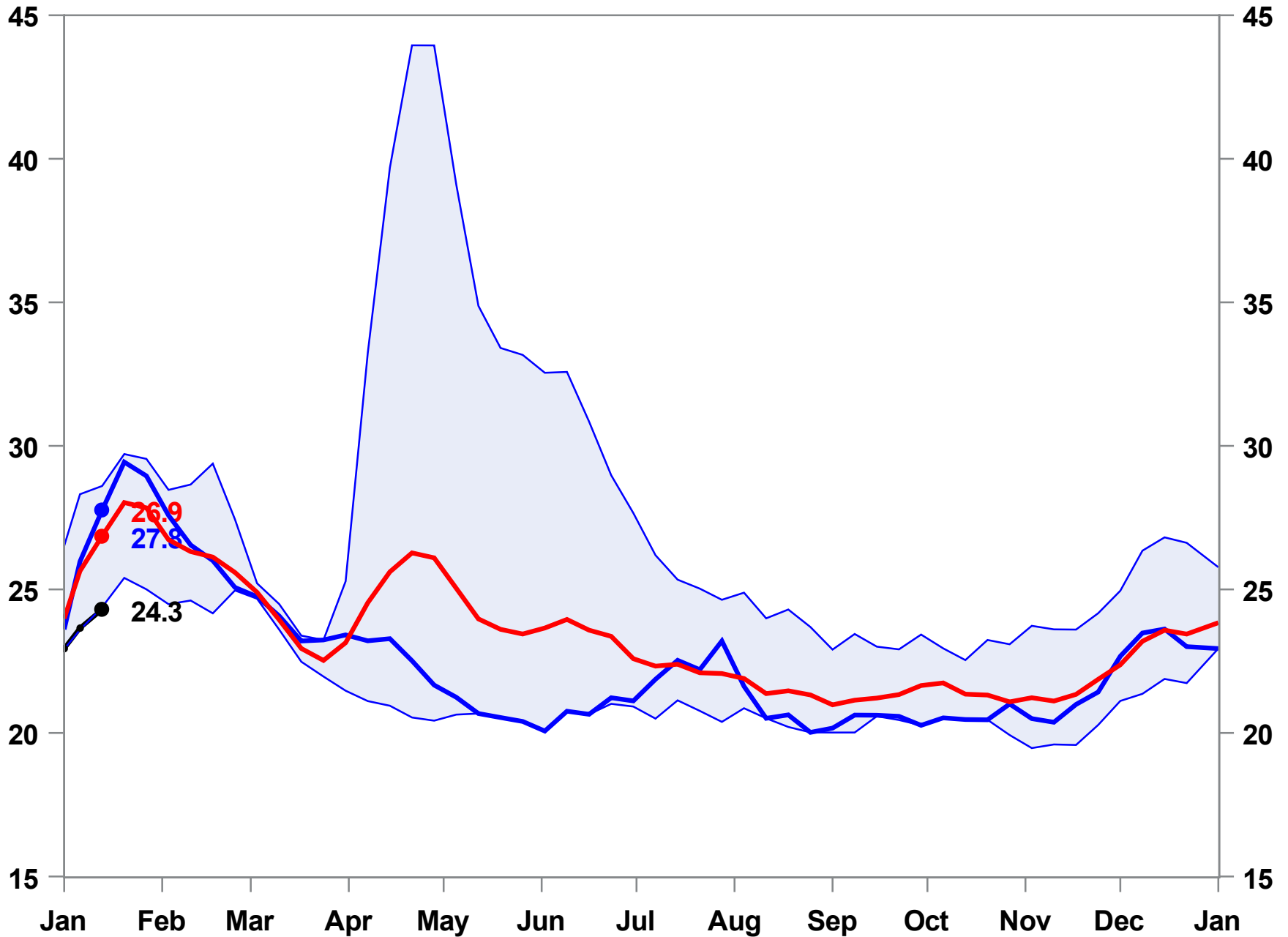
Week Ending: January 13, 2023

24.3 MMBBL

Week Change: 0.65 MMBBL

Last Year: 27.8

Five Year Average: 26.9



PADD 1 Gasoline Stocks

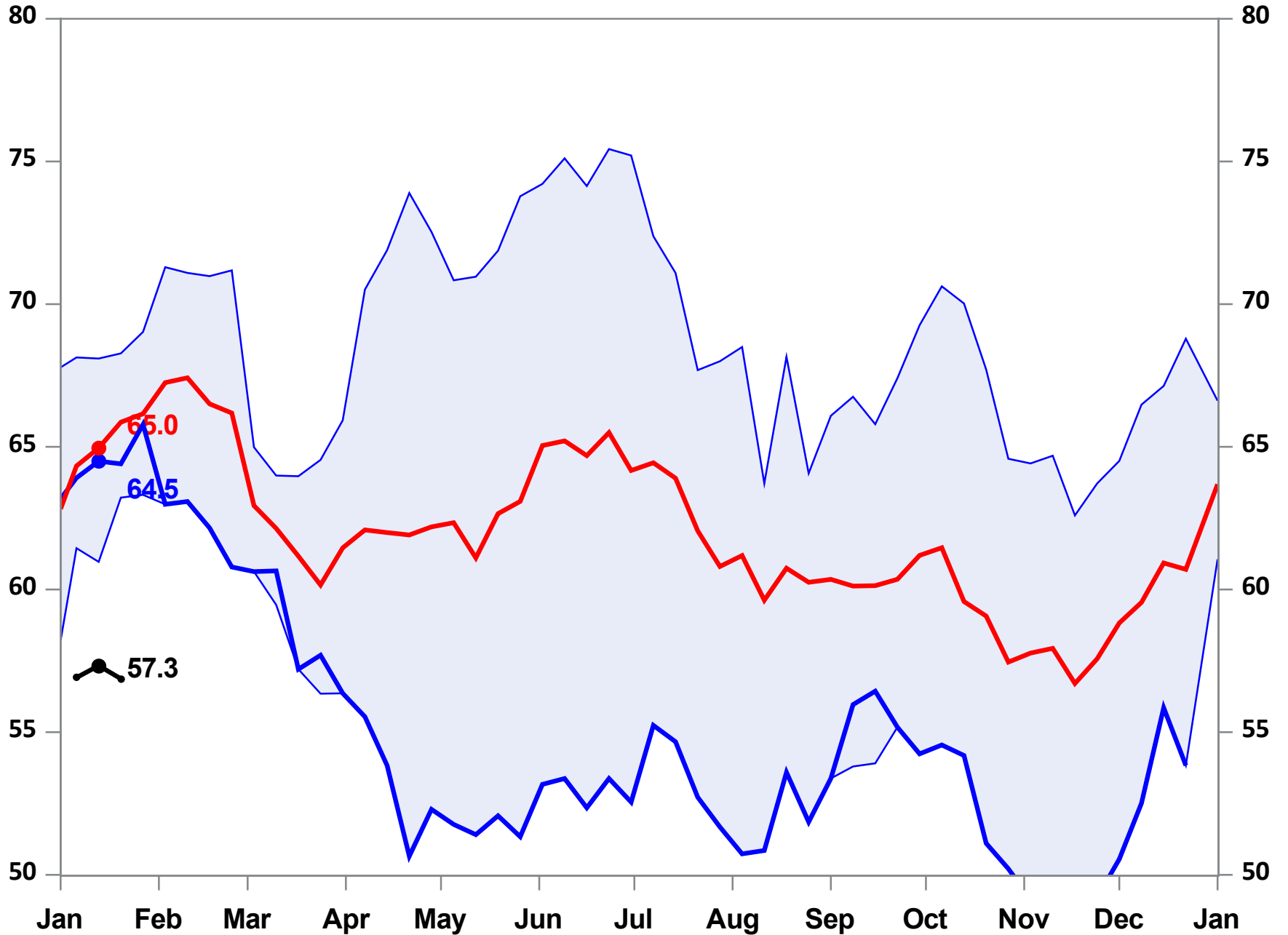
56.9 MMBBL

Week Change: -0.5 MMBBL

Week Ending: Jan 13, 2023

Last Year: 64.5

Five Year Average: 65.0



PADD 1 Gasoline Production

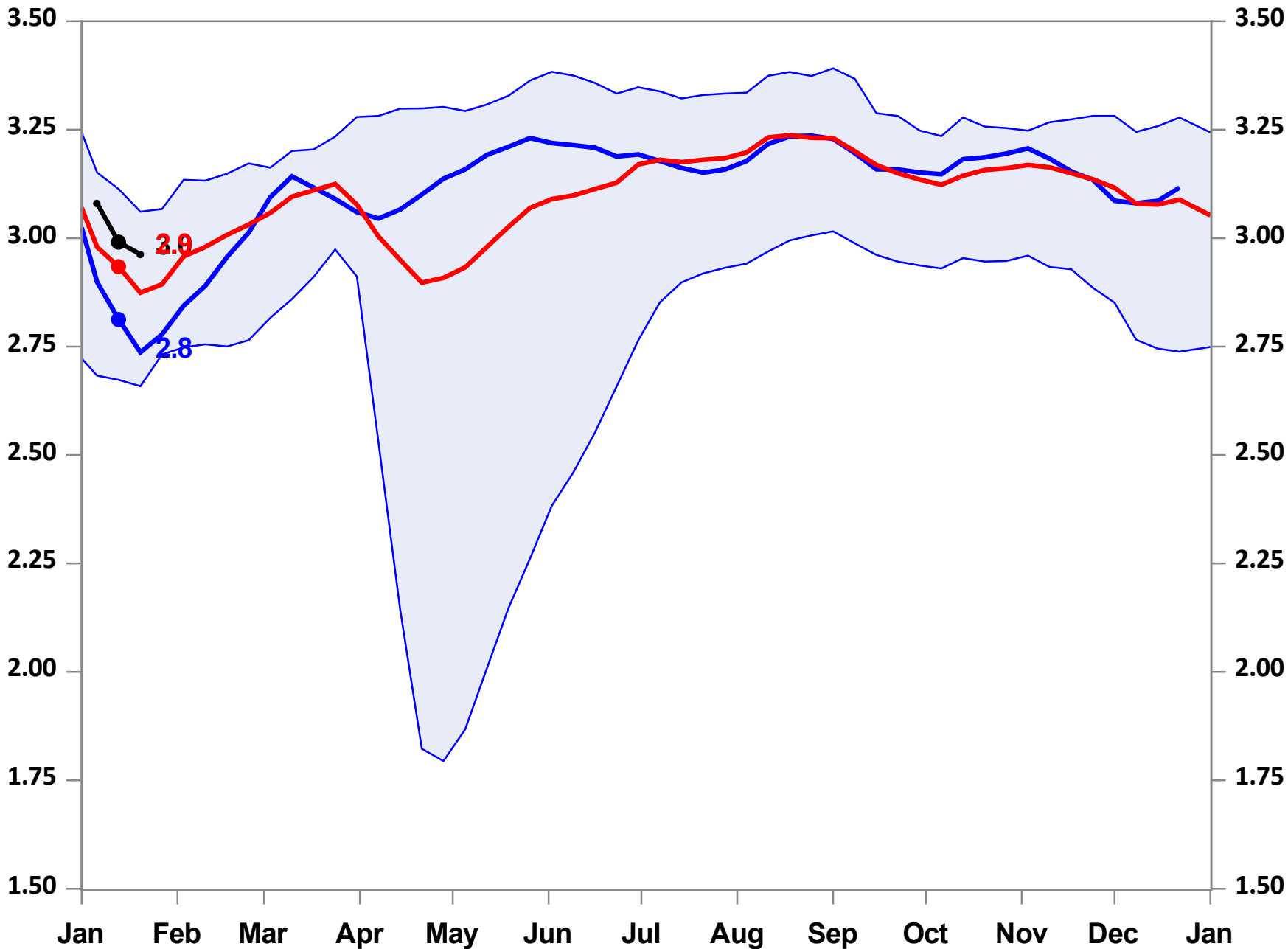
3.0 MMBBL

Week Ending: Jan 13, 2023

Week Change: -0.0 MMBE

Last Year: 64.5

Five Year Average: 2.9



PADD 1 Gasoline Demand

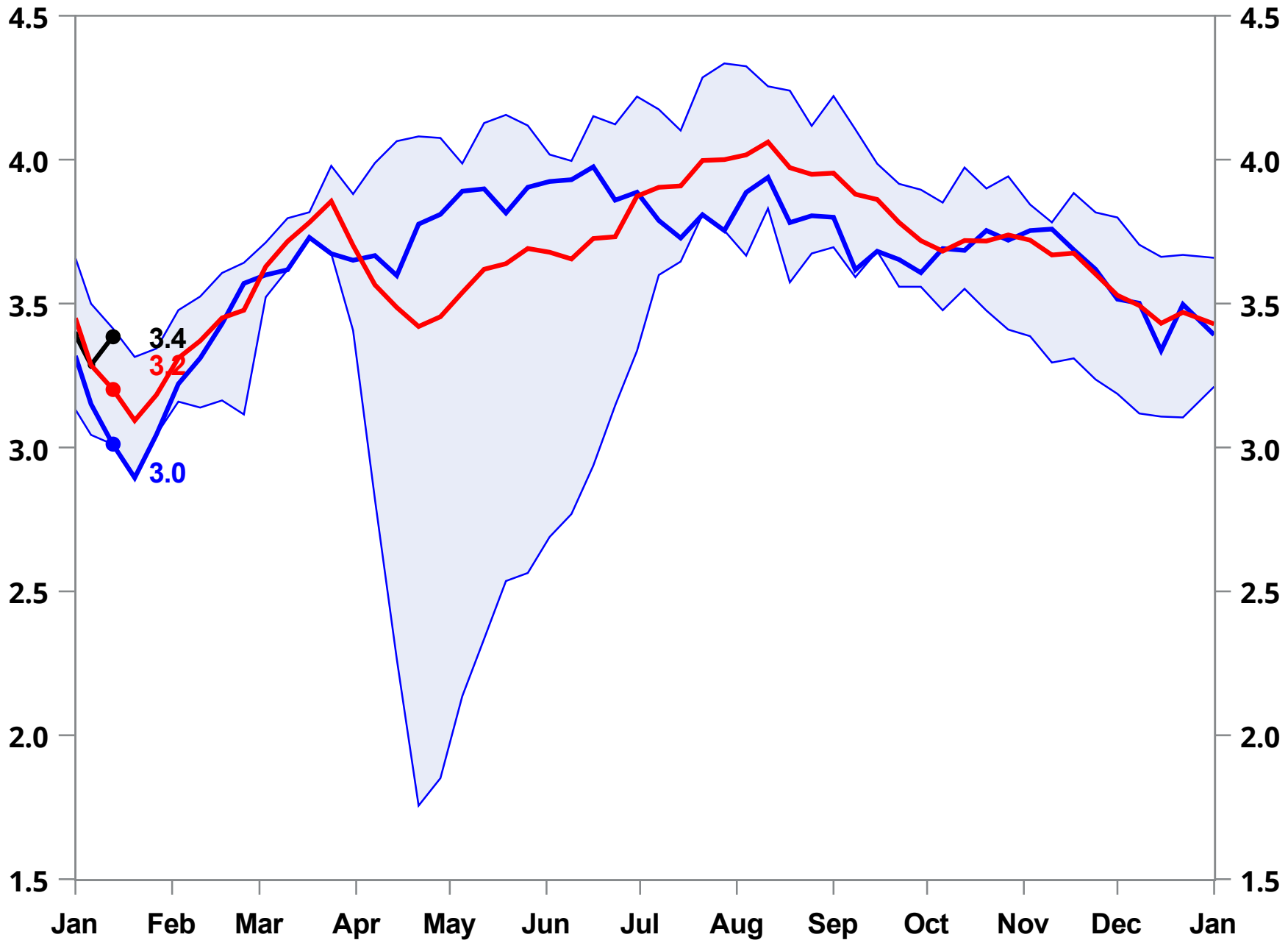
Week Ending: January 13, 2023

3.4 MMBBL

Week Change: 0.10 MMBB

Last Year: 64.5

Five Year Average: 3.2



PADD 1 Gasoline Days Forward Supply

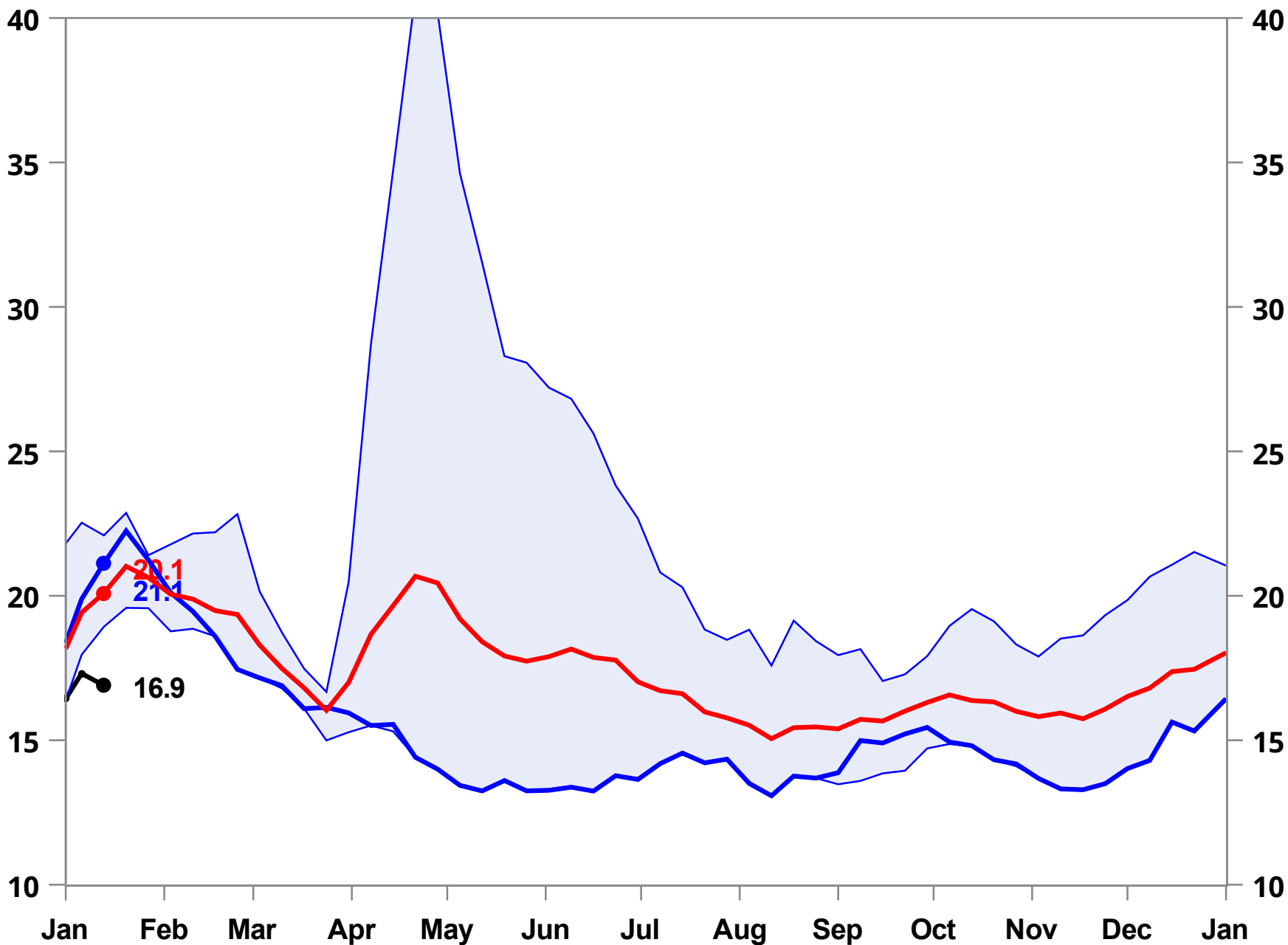
Week Ending: January 13, 2023

16.9 MMBBL

Week Change: -0.42 MMBBL

Last Year: 64.5

Five Year Average: 20.1



Distillates 2022 Year to Date Data

	Distillates Stocks	Distillates Production	Distillates Demand	Days Forward Supply	PADD 3 Distillates Stocks	PADD 3 Distillates Production	PADD 3 Distillates Demand	PADD 3 Days Forward Supply
07JAN	129.4	4.8			39.3	2.9		
14JAN	128.0	4.7	5.2	24.4	39.3	2.8	2.7	14.3
21JAN	125.2	4.8	5.4	23.3	40.5	2.8	2.6	15.7
28JAN	122.7	4.6	5.2	23.6	38.6	2.5	2.8	13.8
04FEB	121.8	4.7	5.3	23.1	39.9	2.7	2.5	15.9
11FEB	120.3	4.5	5.1	23.5	37.6	2.5	2.8	13.6
18FEB	119.7	4.7	5.2	23.0	36.9	2.6	2.7	13.8
25FEB	119.1	4.7	5.2	22.9	38.0	2.6	2.5	15.4
04MAR	113.9	4.6	5.7	20.1	36.3	2.6	2.8	12.8
11MAR	114.2	4.9	5.1	22.3	37.0	2.8	2.7	13.5
18MAR	112.1	5.0	5.4	20.6	38.3	2.9	2.7	14.0
25MAR	113.5	5.1	5.1	22.5	39.4	2.9	2.8	14.2
01APR	114.3	5.0	5.0	22.8	40.3	3.0	2.9	14.0
08APR	111.4	4.7	5.2	21.3	39.1	2.8	3.0	13.1
15APR	108.7	4.8	5.3	20.5	39.5	2.8	2.7	14.4
22APR	107.3	4.8	5.1	21.0	37.7	2.9	3.1	12.1
29APR	104.9	4.7	5.1	20.4	39.2	2.8	2.6	15.1
06MAY	104.0	4.9	5.1	20.3	40.0	2.9	2.8	14.4
13MAY	105.3	4.9	4.8	21.9	41.1	2.8	2.7	15.3

Distillates 2022 Year to Date Data

	Distillates Stocks	Distillates Production	Distillates Demand	Days Forward Supply	PADD 3 Distillates Stocks	PADD 3 Distillates Production	PADD 3 Distillates Demand	PADD 3 Days Forward Supply
20MAY	106.9	5.1	5.0	21.4	44.3	3.0	2.6	17.2
27MAY	106.4	5.0	5.3	20.0	44.9	2.9	2.8	15.9
03JUN	109.0	5.0	4.9	22.5	41.9	2.9	3.3	12.6
10JUN	112.4	5.1	4.7	23.7	40.5	3.0	3.2	12.6
17JUN	109.8	5.1	5.5	19.9	39.8	2.9	3.0	13.4
24JUN	112.4	5.1	4.9	23.1	40.5	3.0	2.9	13.9
01JUL	111.1	5.4	5.7	19.6	42.6	3.1	2.9	14.8
08JUL	113.8	5.1	4.9	23.3	42.1	3.1	3.2	13.3
15JUL	112.5	5.0	5.3	21.1	41.3	3.0	3.2	13.1
22JUL	111.7	5.0	5.2	21.3	41.5	3.0	3.0	14.0
29JUL	109.3	4.9	5.5	19.8	40.2	3.0	3.2	12.6
05AUG	111.5	5.1	5.0	22.2	42.4	3.0	2.7	15.6
12AUG	112.3	5.2	5.2	21.5	43.7	3.0	2.8	15.4
19AUG	111.6	5.2	5.5	20.4	42.2	3.0	3.2	13.1
26AUG	111.7	4.9	5.1	21.9	41.7	2.9	3.0	14.0
02SEP	111.8	5.0	5.2	21.5	40.3	3.0	3.2	12.5
09SEP	116.0	5.0	4.5	25.5	44.2	3.0	2.4	18.5
16SEP	117.3	5.2	5.2	22.7	45.4	3.2	3.0	15.2
23SEP	114.4	5.0	5.5	20.9	44.6	3.0	3.1	14.5

Distillates 2022 Year to Date Data

	Distillates Stocks	Distillates Production	Distillates Demand	Days Forward Supply	PADD 3 Distillates Stocks	PADD 3 Distillates Production	PADD 3 Distillates Demand	PADD 3 Days Forward Supply
30SEP	110.9	5.2	5.8	19.3	43.3	3.1	3.3	13.1
07OCT	106.1	4.9	5.6	18.8	40.8	2.9	3.2	12.7
14OCT	106.2	5.0	5.1	20.8	41.2	3.0	2.9	14.3
21OCT	106.4	5.0	5.1	20.9	42.8	2.8	2.6	16.7
28OCT	106.8	5.1	5.2	20.6	42.1	2.9	3.0	13.9
04NOV	106.3	5.2	5.6	19.0	41.4	3.0	3.1	13.5
11NOV	107.4	5.1	5.0	21.3	42.0	2.9	2.8	14.8
18NOV	109.1	5.1	5.0	21.9	42.2	3.0	2.9	14.4
25NOV	112.6	5.3	5.0	22.7	43.6	3.1	2.9	14.8
02DEC	118.8	5.3	4.8	24.6	44.8	3.1	3.0	15.1
09DEC	120.2	5.2	5.3	22.9	44.8	3.0	3.0	14.8
16DEC	119.9	5.1	5.3	22.5	43.4	2.9	3.1	13.9
23DEC	120.2	5.1	5.2	23.1	42.8	2.9	3.0	14.4
30DEC	118.8	4.0	4.4	27.3	40.5	2.2	2.5	16.1
06JAN	117.7	4.5	4.9	24.0	37.7	2.5	2.9	13.0
13JAN	115.8	4.6	5.0	23.0	38.2	2.6	2.6	14.9

Distillates Stocks

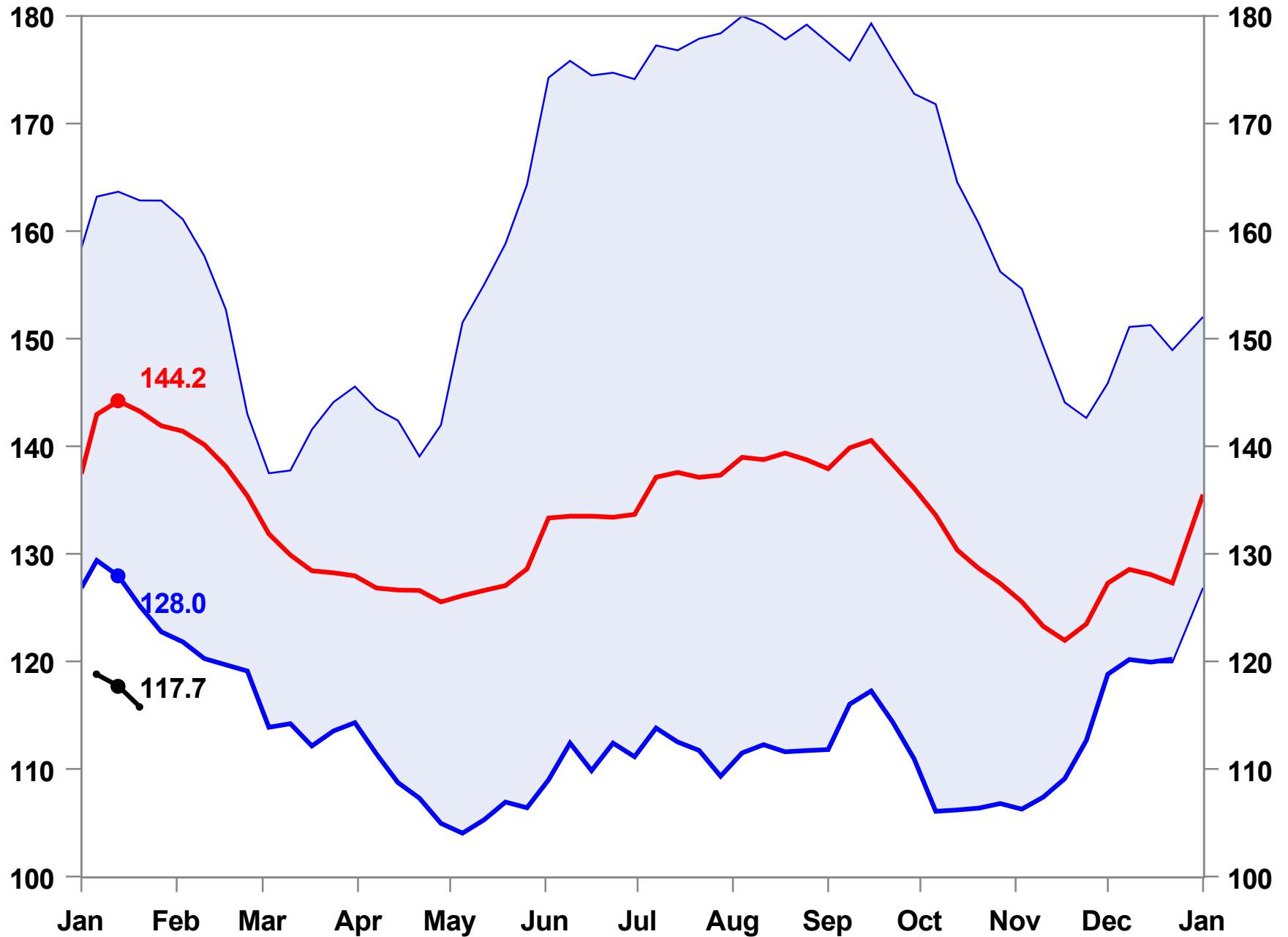
115.8 MMBBL

Week Change: -1.9 MMBBL

Week Ending: January 13, 2023

Last Year: 64.5

Five Year Average: 144.2



Distillates Production

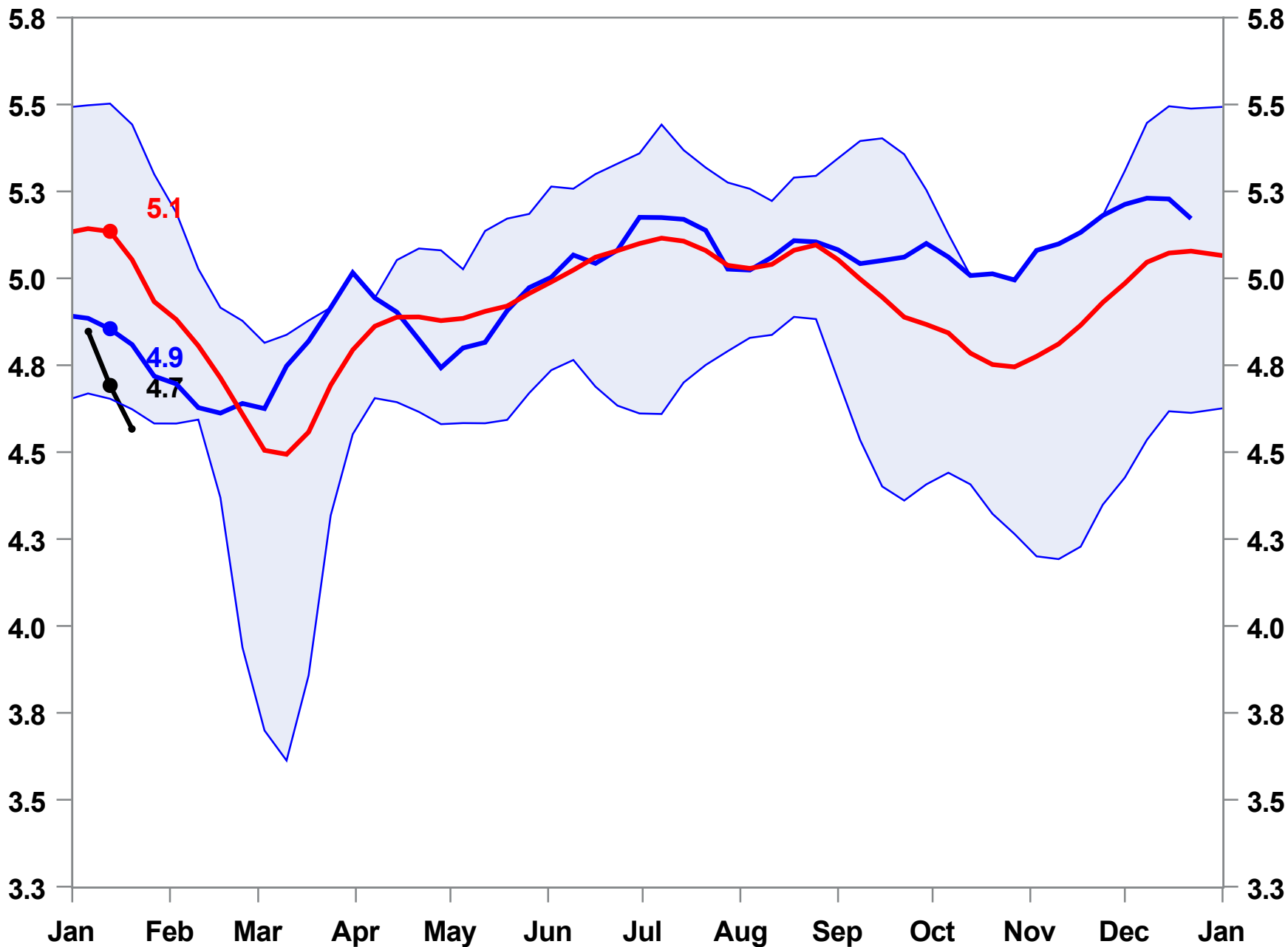
4.6 MMBBL

Week Change: -0.1 MMBBL

Week Ending: January 13, 2023

Last Year: 64.5

Five Year Average: 5.1



Distillates Demand

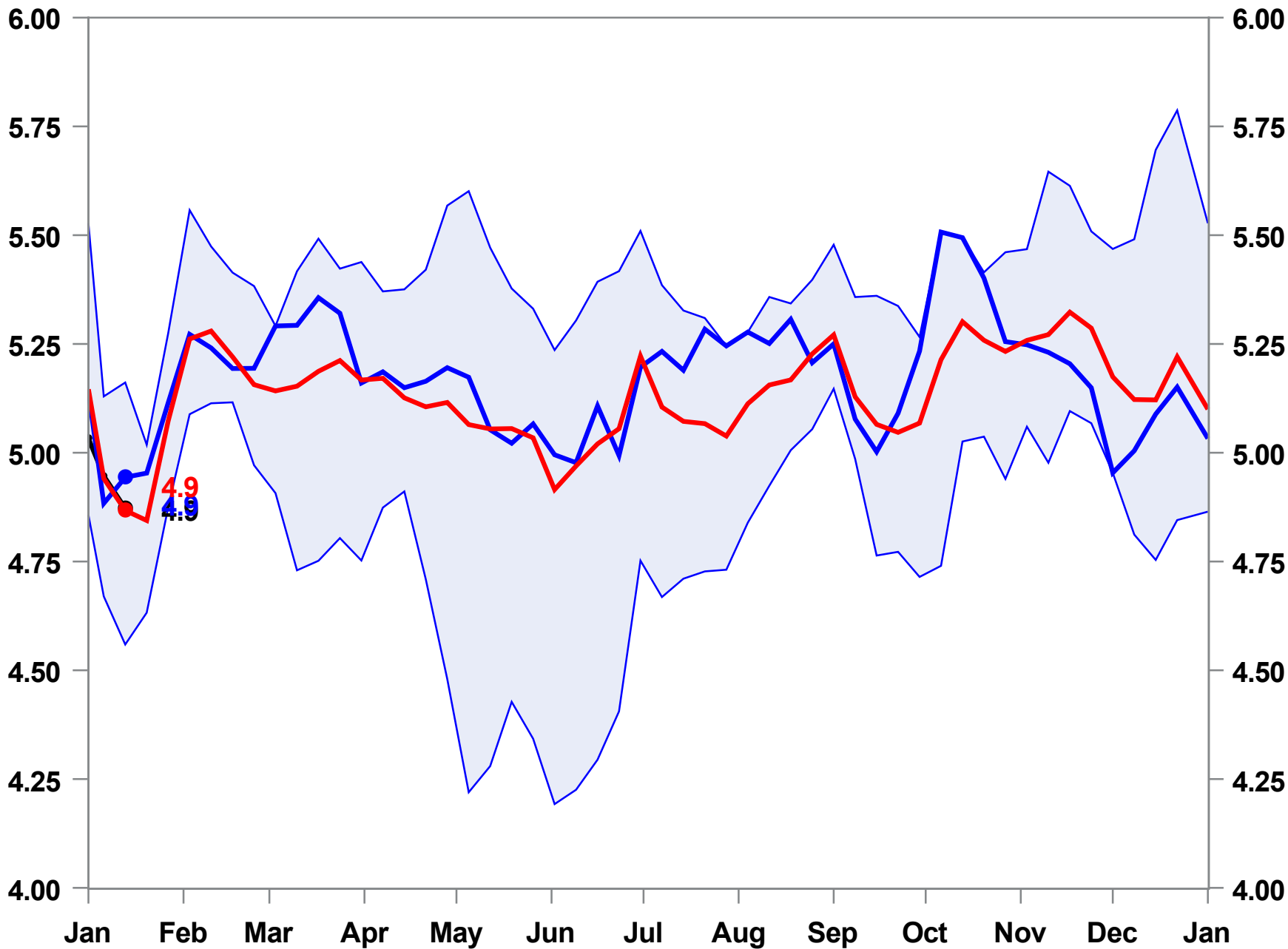
4.9 MMBBL

Week Change: -0.07 MMBBL

Week Ending: January 13, 2023

Last Year: 64.5

Five Year Average: 4.9



Distillates Days Forward Supply

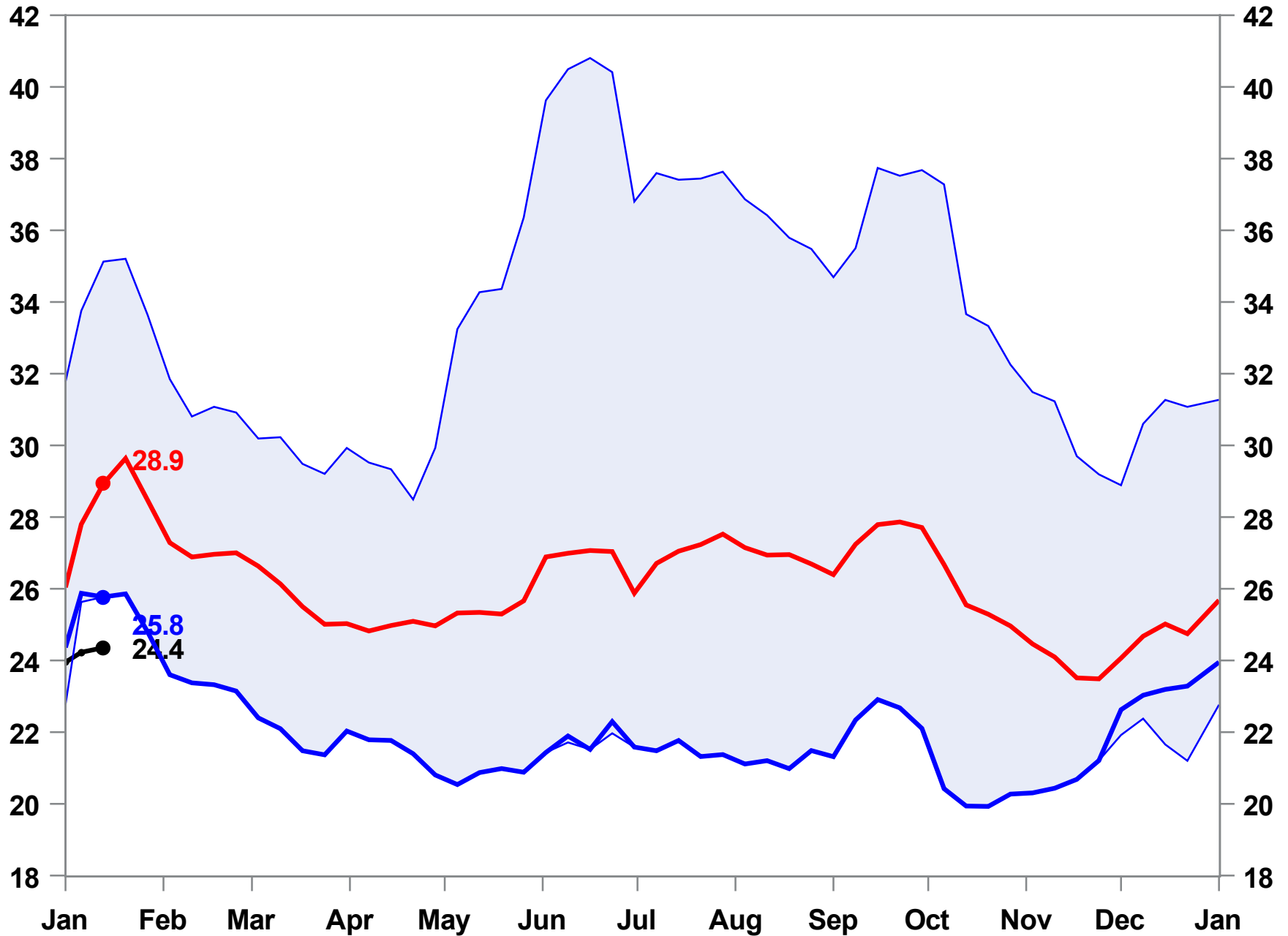
Week Ending: January 13, 2023

24.4 MMBBL

Week Change: 0.13 MMBBL

Last Year: 64.5

Five Year Average: 28.9



Distillates Exports

1.2 MMBBL

Week Change: -0.08 MMBBL

Week Ending: January 13, 2023

Last Year: 64.5

Five Year Average: 1.1

