

59 Bcf Natural Gas Storage Withdrawal Close to Expectations

The EIA reported a 59 Bcf withdrawal from natural gas storage inventories for the week ending November 26, which included the Thanksgiving holiday. The draw was in line with expectations of a 58 Bcf withdrawal. The EIA recorded a small 1 Bcf withdrawal in the year-earlier period and the five-year average is a 25 Bcf draw. The prior week's EIA report showed a 21 Bcf draw

Total working gas in storage is now 3,564 Bcf, which is 375 Bcf less than last year at this time and 70 Bcf below the five-year average of 3,634 Bcf.

EIA Weekly Natural Gas Storage Data Report November 26, 2021

| | Bcf in Storage | Week Change | Last Week Storage | Week Change | Last Year Storage |
|----------------------|-------------------|----------------|----------------------|----------------|----------------------|
| East Region | 867 | -22 | 889 | -11 | 934 |
| Midwest Region | 1,043 | -23 | 1,066 | -13 | 1,122 |
| Mountain Region | 206 | -4 | 210 | -2 | 240 |
| Pacific Region | 263 | 1 | 262 | 1 | 318 |
| South Region | 1,185 | -12 | 1,197 | 6 | 1,326 |
| Salt Region | 335 | -3 | 338 | 7 | 368 |
| Non Salt Region | 851 | -8 | 859 | -1 | 958 |
| Total Storage | 3,564 | -59 | 3,623 | -21 | 3,939 |

EIA Weekly Natural Gas Storage Data Report Detail of Data

| | Total Storage Working Gas | Week Change | Last Year Storage | Last Year Change | Delta to Last Year | Five Year Average | Five Year Change | Delta to Five Year Average | NYMEX Average Price | Week Change |
|---------|---------------------------------|----------------|-------------------------|------------------------|-----------------------|-------------------------|------------------------|----------------------------------|---------------------------|----------------|
| 29OCT21 | 3,611 | 63 | 3,919 | -36 | -308 | 3,733 | 26 | -122 | \$5.84 | 0.71 |
| 05NOV21 | 3,618 | 7 | 3,927 | 8 | -309 | 3,745 | 12 | -127 | \$5.53 | -0.31 |
| 12NOV21 | 3,644 | 26 | 3,958 | 31 | -314 | 3,696 | -49 | -52 | \$5.05 | -0.48 |
| 19NOV21 | 3,623 | -21 | 3,940 | -18 | -317 | 3,658 | -38 | -35 | \$5.00 | -0.05 |
| 26NOV21 | 3,564 | -59 | 3,939 | -1 | -375 | 3,634 | -25 | -70 | \$5.07 | 0.07 |
| 03DEC21 | . | . | 3,848 | -91 | . | 3,542 | -91 | . | \$4.56 | -0.51 |
| 10DEC21 | . | . | 3,726 | -122 | . | 3,390 | -152 | . | . | . |
| 17DEC21 | . | . | 3,574 | -152 | . | 3,248 | -142 | . | . | . |

**EIA Weekly Natural Gas Storage Data Report
By Regions**

| | South Region | Week Chg | Last Year Storage | Last Year Delta | Five Year Avg. | Five Year Delta | Salt Region | Week Chg | Last Year Storage | Last Year Delta | Five Year Avg. | Five Year Delta |
|---------|-----------------|-------------|-------------------------|-----------------------|----------------------|-----------------------|----------------|-------------|-------------------------|-----------------------|----------------------|-----------------------|
| 29OCT21 | 1172 | 28 | 1293 | -121 | 1197 | -25 | 320 | 16 | 348 | -28 | 325 | -5 |
| 05NOV21 | 1175 | 3 | 1293 | -118 | 1208 | -33 | 324 | 4 | 345 | -21 | 333 | -9 |
| 12NOV21 | 1191 | 16 | 1306 | -115 | 1194 | -3 | 331 | 7 | 350 | -19 | 327 | 4 |
| 19NOV21 | 1197 | 6 | 1312 | -115 | 1195 | 2 | 338 | 7 | 356 | -18 | 333 | 5 |
| 26NOV21 | 1185 | -12 | 1326 | -141 | 1201 | -16 | 335 | -3 | 368 | -33 | 342 | -7 |
| 03DEC21 | . | . | 1294 | . | 1179 | . | . | . | 361 | . | 340 | . |
| 10DEC21 | . | . | 1256 | . | 1132 | . | . | . | 348 | . | 324 | . |
| 17DEC21 | . | . | 1207 | . | 1090 | . | . | . | 337 | . | 314 | . |

**EIA Weekly Natural Gas Storage Data Report
By Regions**

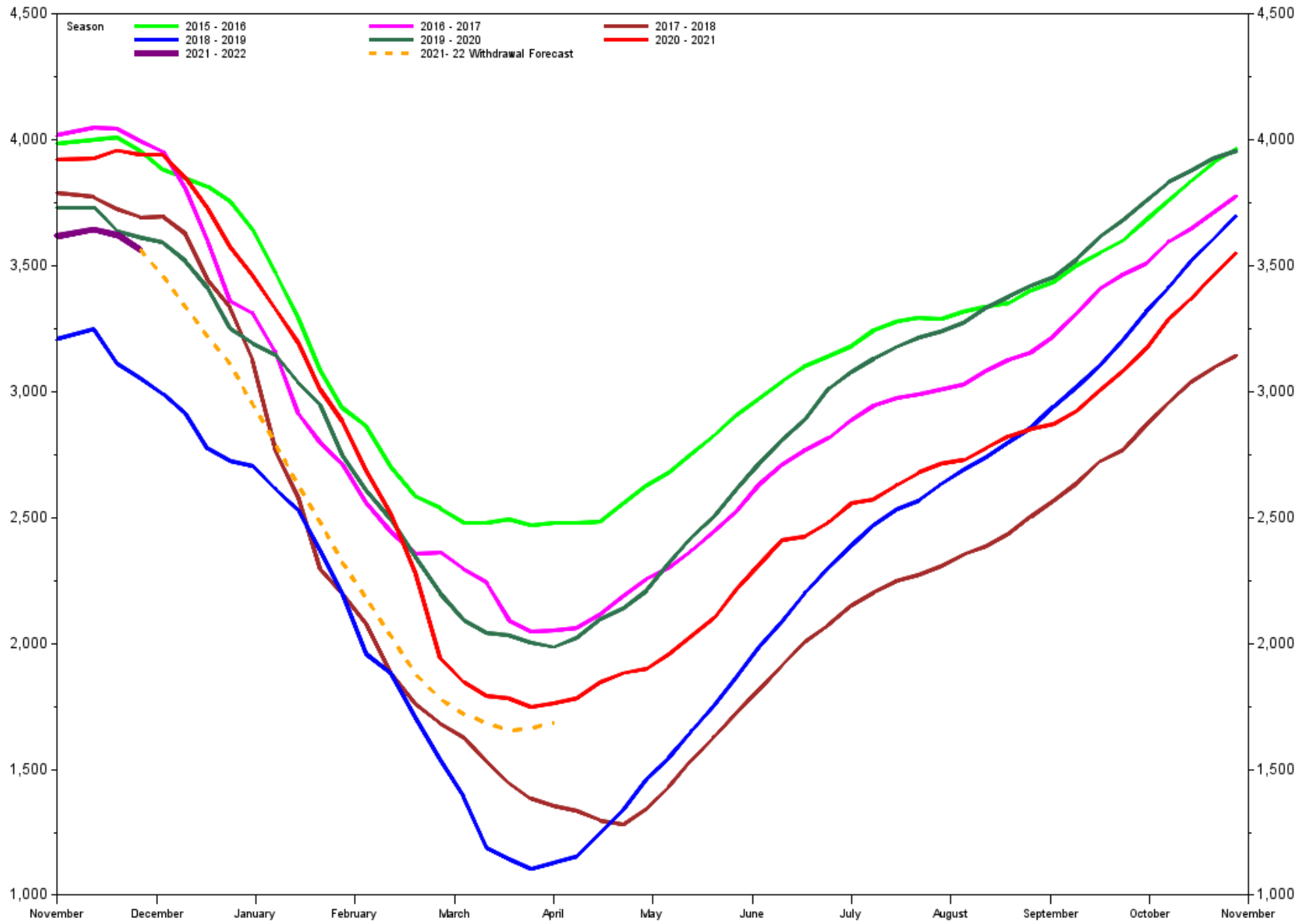
| | East Region | Week Chg | Last Year Storage | Last Year Delta | Five Year Avg. | Five Year Delta | Midwest Region | Week Chg | Last Year Storage | Last Year Delta | Five Year Avg. | Five Year Delta |
|---------|----------------|-------------|-------------------------|-----------------------|----------------------|-----------------------|-------------------|-------------|-------------------------|-----------------------|----------------------|-----------------------|
| 29OCT21 | 899 | 14 | 947 | -48 | 916 | -17 | 1071 | 19 | 1119 | -48 | 1094 | -23 |
| 05NOV21 | 897 | -2 | 942 | -45 | 914 | -17 | 1075 | 4 | 1127 | -52 | 1097 | -22 |
| 12NOV21 | 900 | 3 | 953 | -53 | 898 | 2 | 1079 | 4 | 1139 | -60 | 1082 | -3 |
| 19NOV21 | 889 | -11 | 934 | -45 | 879 | 10 | 1066 | -13 | 1133 | -67 | 1064 | 2 |
| 26NOV21 | 867 | -22 | 934 | -67 | 869 | -2 | 1043 | -23 | 1122 | -79 | 1049 | -6 |
| 03DEC21 | . | . | 915 | . | 847 | . | . | . | 1095 | . | 1019 | . |
| 10DEC21 | . | . | 881 | . | 806 | . | . | . | 1059 | . | 972 | . |
| 17DEC21 | . | . | 844 | . | 771 | . | . | . | 1015 | . | 929 | . |

**EIA Weekly Natural Gas Storage Data Report
By Regions**

| | Mountain Region | Week Chg | Last Year Storage | Last Year Delta | Five Year Avg. | Five Year Delta | Pacific Region | Week Chg | Last Year Storage | Last Year Delta | Five Year Avg. | Five Year Delta |
|---------|--------------------|-------------|-------------------------|-----------------------|----------------------|-----------------------|-------------------|-------------|-------------------------|-----------------------|----------------------|-----------------------|
| 29OCT21 | 213 | 1 | 240 | -27 | 221 | -8 | 256 | 1 | 320 | -64 | 304 | -48 |
| 05NOV21 | 213 | 0 | 243 | -30 | 222 | -9 | 258 | 2 | 322 | -64 | 304 | -46 |
| 12NOV21 | 212 | -1 | 241 | -29 | 220 | -8 | 261 | 3 | 319 | -58 | 302 | -41 |
| 19NOV21 | 210 | -2 | 242 | -32 | 219 | -9 | 262 | 1 | 320 | -58 | 302 | -40 |
| 26NOV21 | 206 | -4 | 240 | -34 | 217 | -11 | 263 | 1 | 318 | -55 | 299 | -36 |
| 03DEC21 | . | . | 232 | . | 208 | . | . | . | 312 | . | 289 | . |
| 10DEC21 | . | . | 223 | . | 199 | . | . | . | 306 | . | 280 | . |
| 17DEC21 | . | . | 212 | . | 190 | . | . | . | 296 | . | 269 | . |

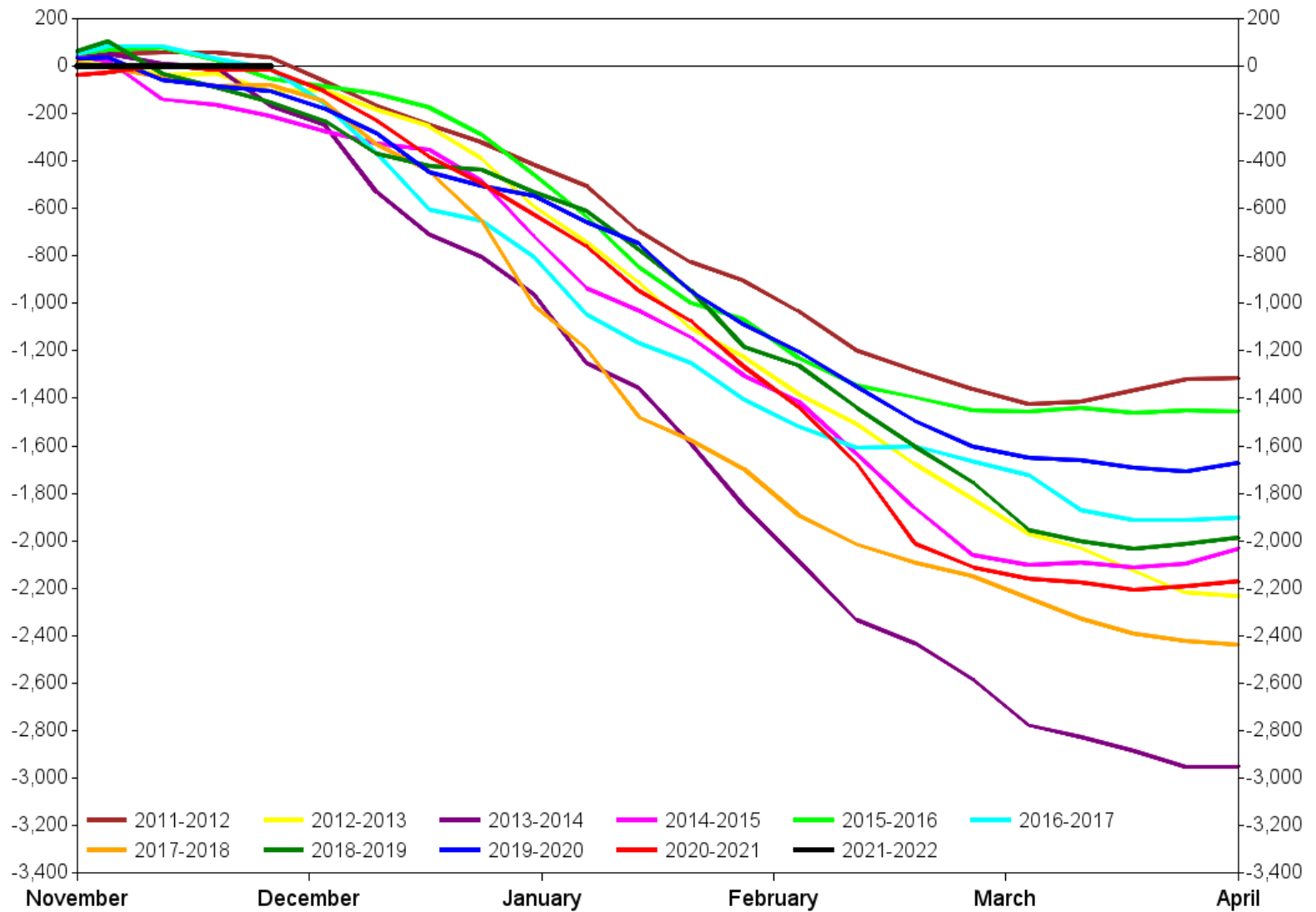
November 26, 2021

EIA Weekly Natural Gas Storage Report
 Lower 48 Natural Gas Storage with Forecast
 3,564 Bcf in Storage -59 bcf Week Change



November 26, 2021

Cumulative Total Storage Withdrawal (Bcf)
 Withdrawal -59 Cumulative Withdrawal 0



Sources: EIA Fundamental Analytics LLC

www.fundamentalanalytics.com

Natural Gas Storage Withdrawal Season - Lower 48 Total Working Gas
Withdrawal Distribution

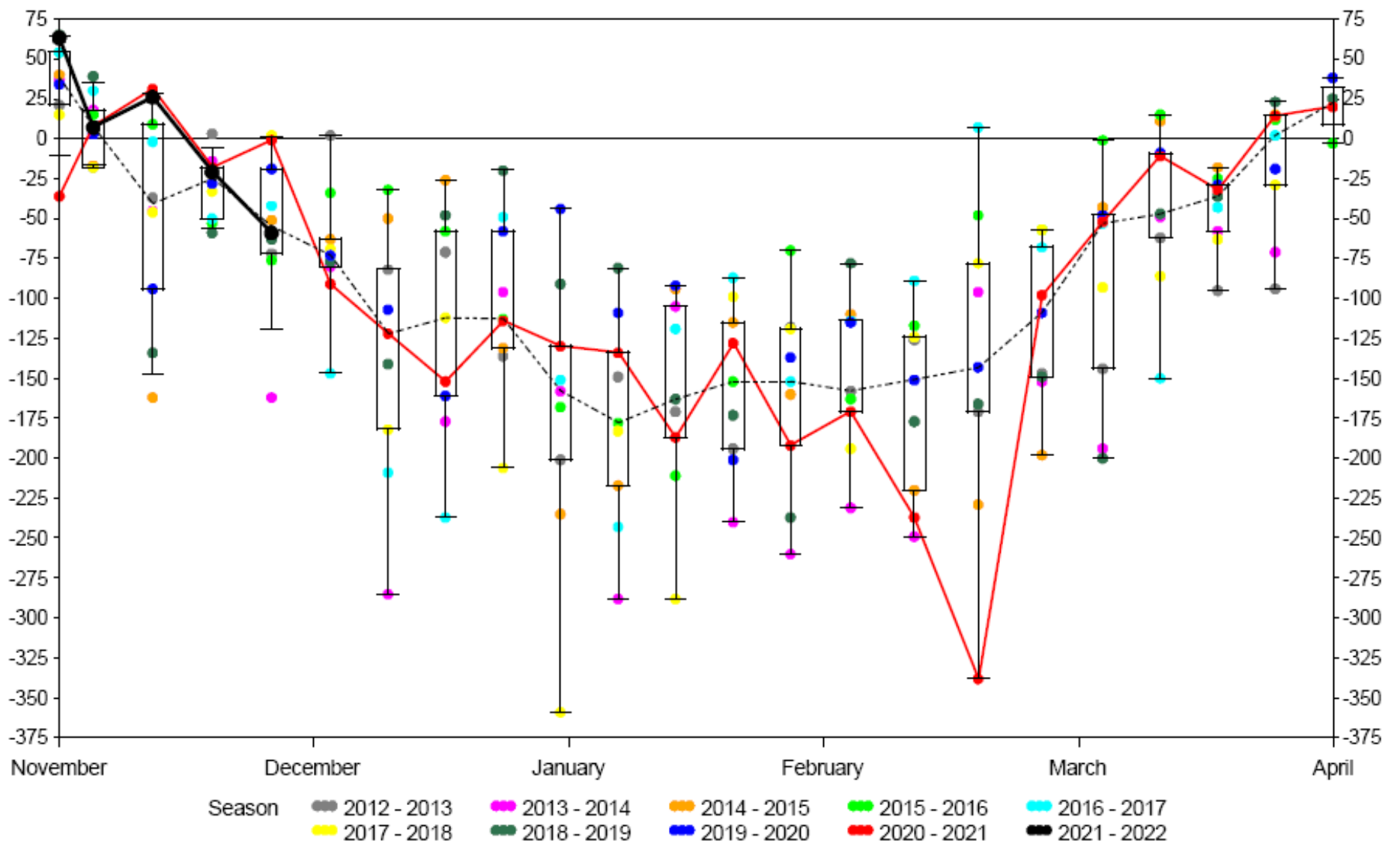
November 26, 2021

-59 Bcf Week Change

2020-2021 Season (Red line)

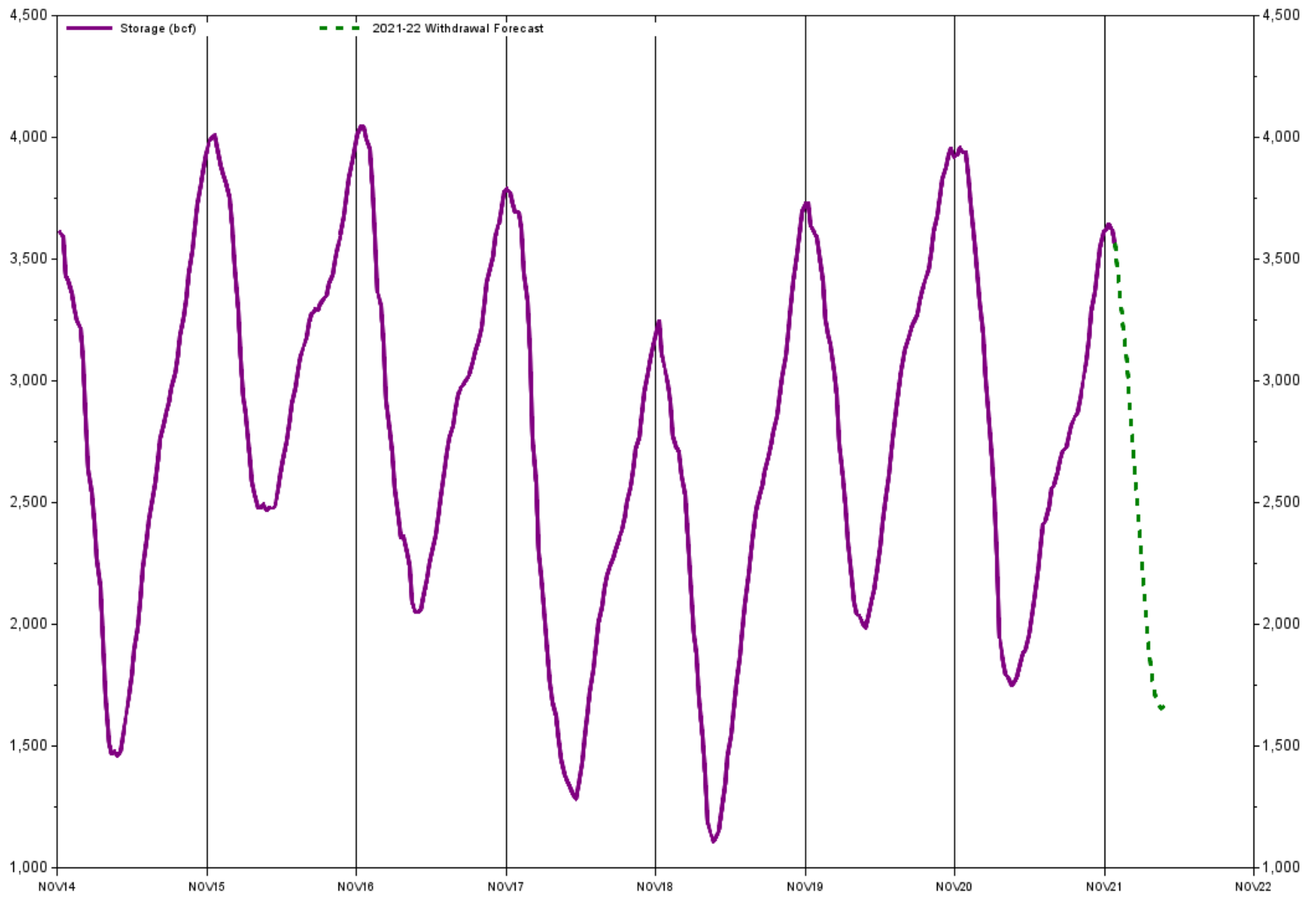
2021-2022 Season (Black line)

10 Year Average (Dashed Line)



November 26, 2021

EIA Weekly Natural Gas Storage Report
Lower 48 Natural Gas Storage with Forecast
3,564 Bcf in Storage -59 bcf Week Change

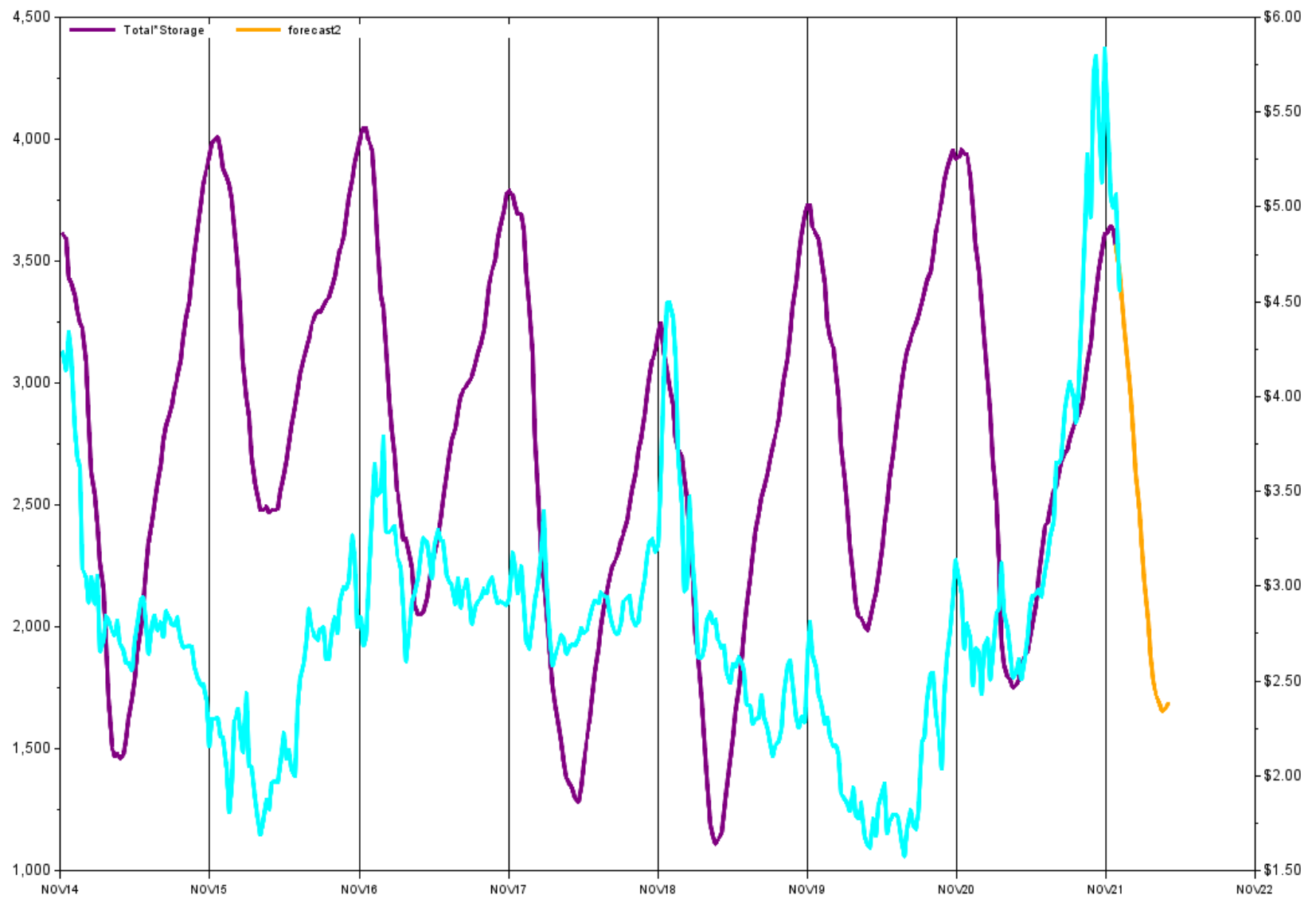


Sources: EIA Fundamental Analytics LLC

www.fundamentalanalytics.com

November 26, 2021

EIA Weekly Natural Gas Storage Report
Lower 48 Natural Gas Storage with Forecast
3,564 Bcf in Storage -59 bcf Week Change

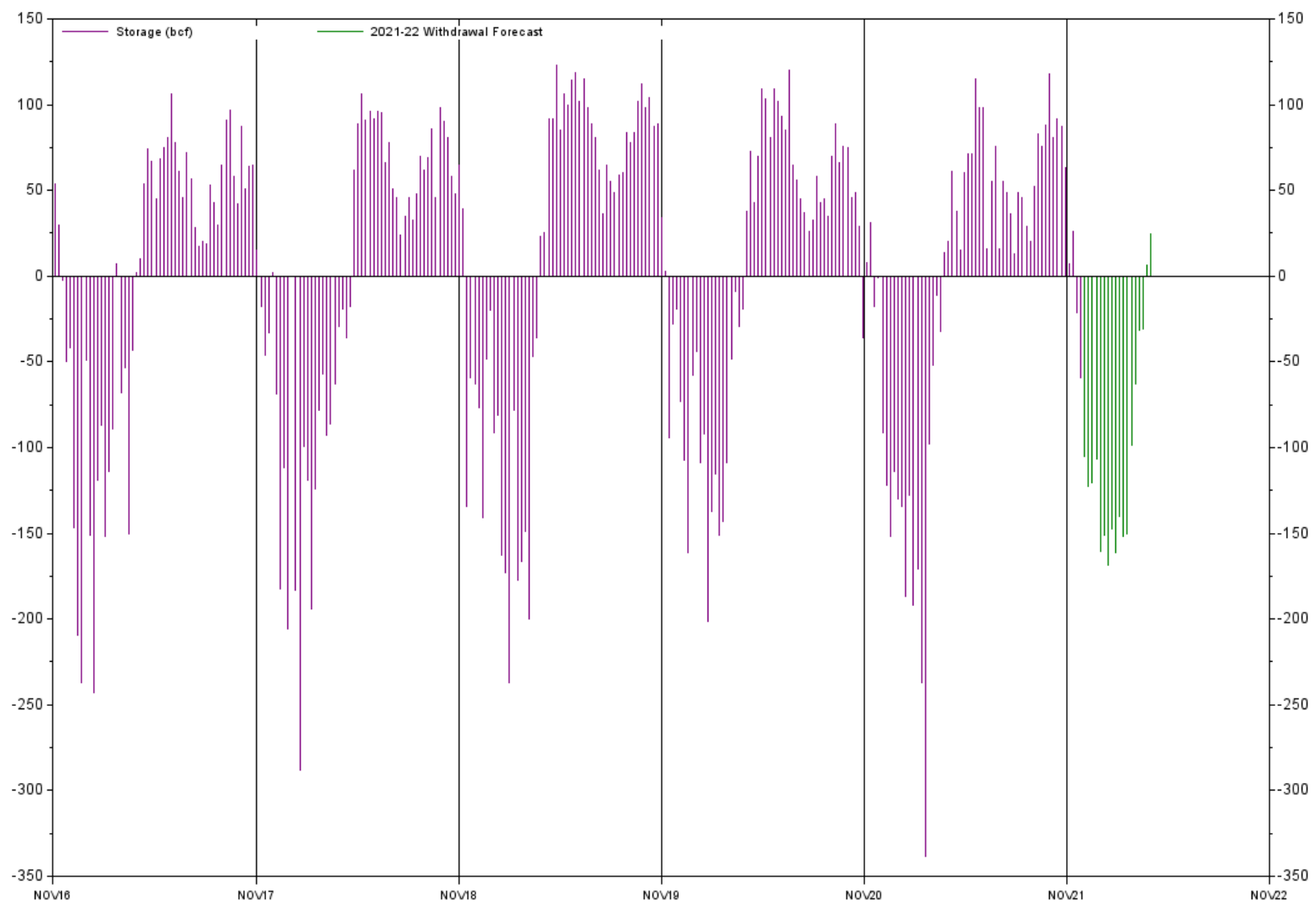


Sources: EIA Fundamental Analytics LLC

www.fundamentalanalytics.com

November 26, 2021

EIA Weekly Natural Gas Storage Report
Lower 48 Natural Gas Storage with Forecast
3,564 Bcf in Storage -59 bcf Week Change



Sources: EIA Fundamental Analytics LLC

www.fundamentalanalytics.com