

## 190 Bcf Natural Gas Storage Withdrawal Less than Expectations

The EIA reported a 190 Bcf withdrawal from natural gas storage inventories for the week ending February 11. The draw was less than the average of expectations of 199 Bcf and the market fell after the report was released, finishing the trading down 26 cents. The less than expected withdrawal was attributed to higher production volumes not visible behind Texas intrastate pipelines as well as additional power from wind generation.

### *EIA Weekly Natural Gas Storage Data Report February 11, 2022*

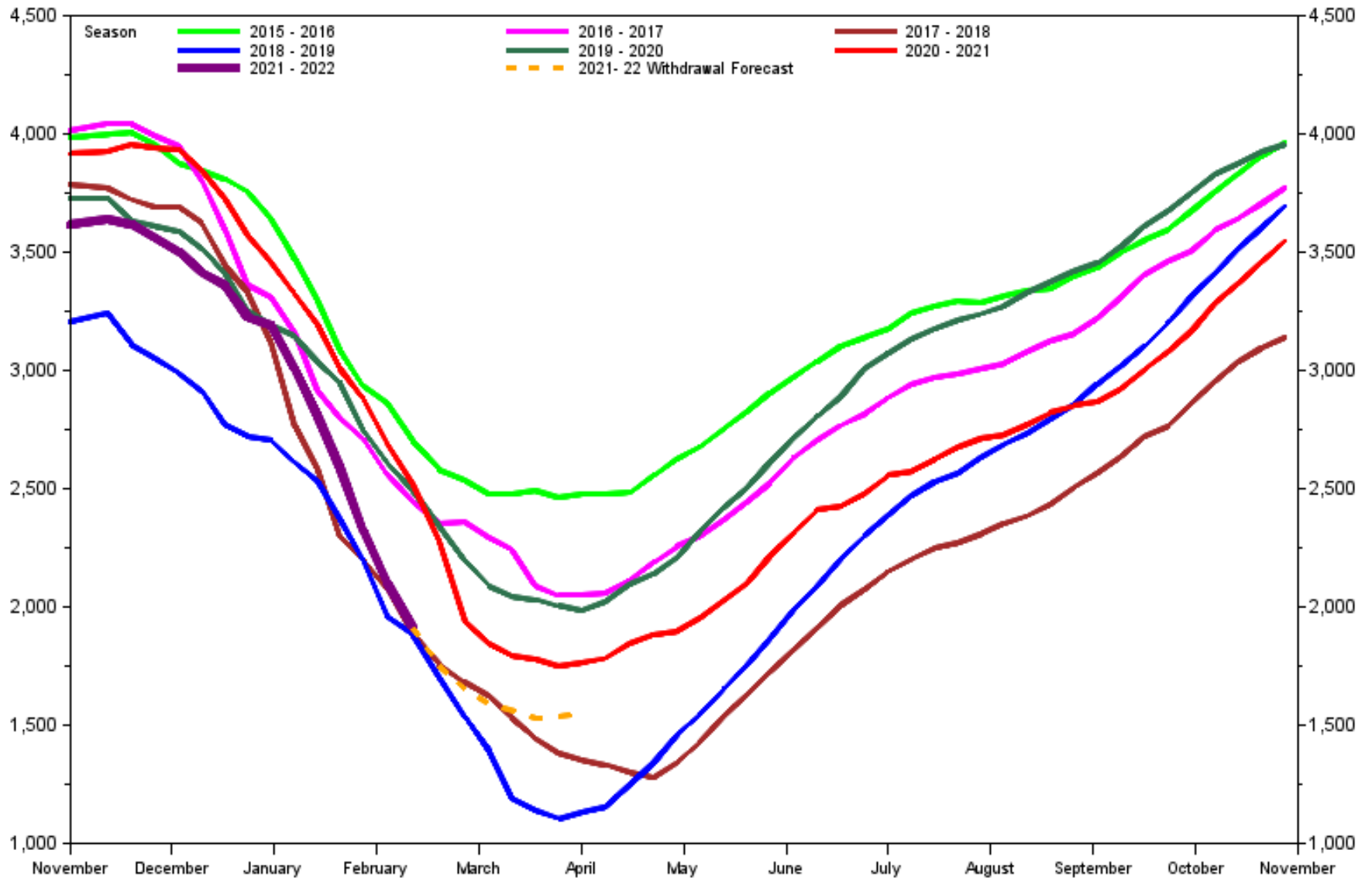
	Bcf in Storage	Week Change	Last Week Storage	Week Change	Last Year Storage
East Region	435	-50	485	-56	485
Midwest Region	496	-56	552	-64	589
Mountain Region	114	-7	121	-12	137
Pacific Region	177	-4	181	-15	244
South Region	689	-74	763	-74	826
Salt Region	173	-34	207	-24	233
Non Salt Region	516	-40	556	-50	593
<b>Total Storage</b>	<b>1,911</b>	<b>-190</b>	<b>2,101</b>	<b>-222</b>	<b>2,281</b>

### *EIA Weekly Natural Gas Storage Data Report Detail of Data*

	Total Storage Working Gas	Week Change	Last Year Storage	Last Year Change	Delta to Last Year	Five Year Average	Five Year Change	Delta to Five Year Average	NYMEX Average Price	Week Change
14JAN22	2,810	-206	3,009	-187	-199	2,684	-170	126	\$4.34	0.52
21JAN22	2,591	-219	2,881	-128	-290	2,546	-138	45	\$4.03	-0.31
28JAN22	2,323	-268	2,689	-192	-366	2,379	-167	-56	\$4.65	0.62
04FEB22	2,101	-222	2,518	-171	-417	2,245	-134	-144	\$4.92	0.27
11FEB22	1,911	-190	2,281	-237	-370	2,089	-156	-178	\$4.08	-0.84
18FEB22	.	.	1,943	-338	.	1,945	-144	.	\$4.41	0.33
25FEB22	.	.	1,845	-98	.	1,849	-96	.	.	.
04MAR22	.	.	1,793	-52	.	1,760	-89	.	.	.

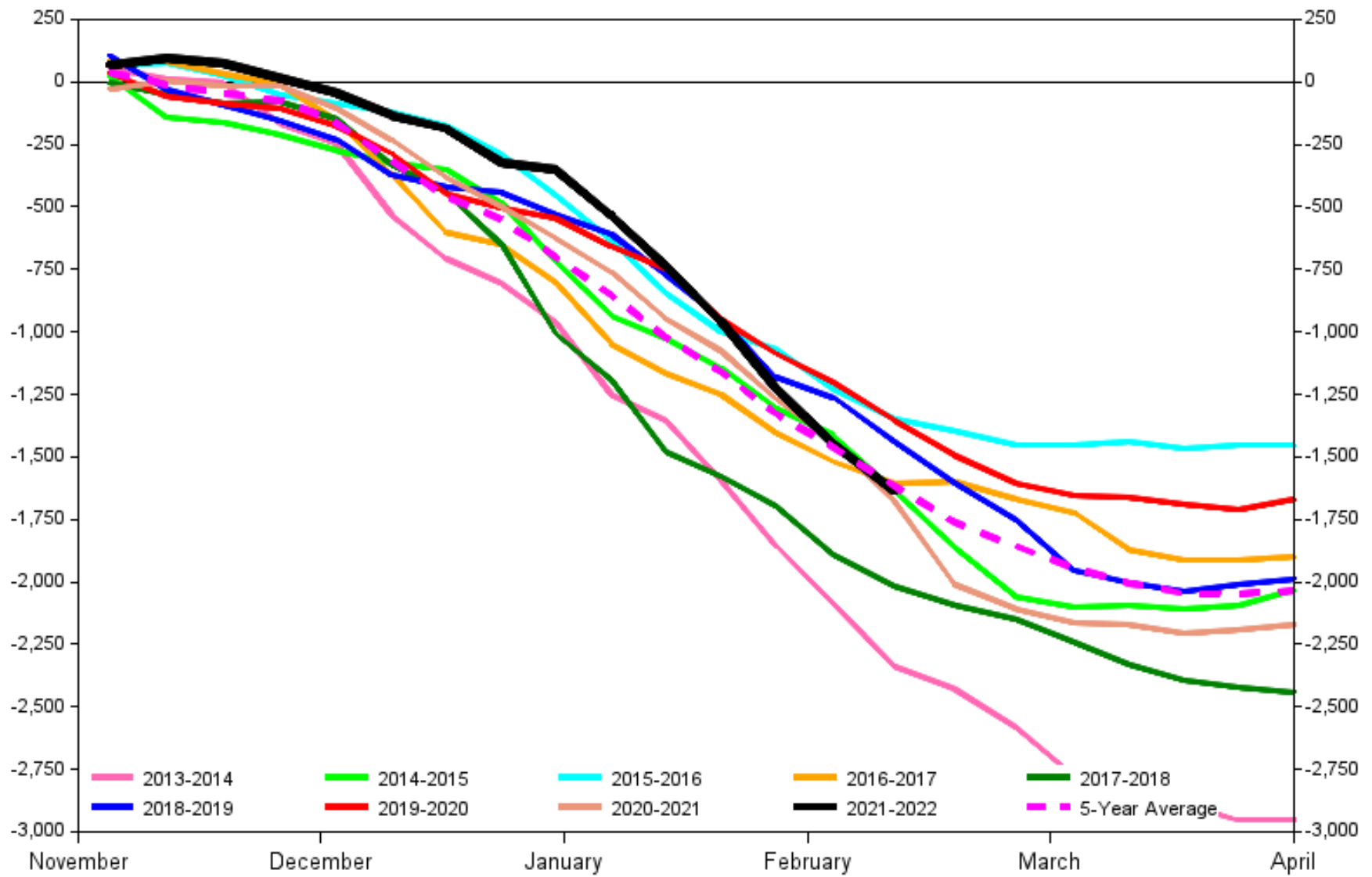
EIA Weekly Natural Gas Storage Report  
 Lower 48 Natural Gas Storage with Forecast  
 1,911 Bcf in Storage -190 bcf Week Change

February 11, 2022



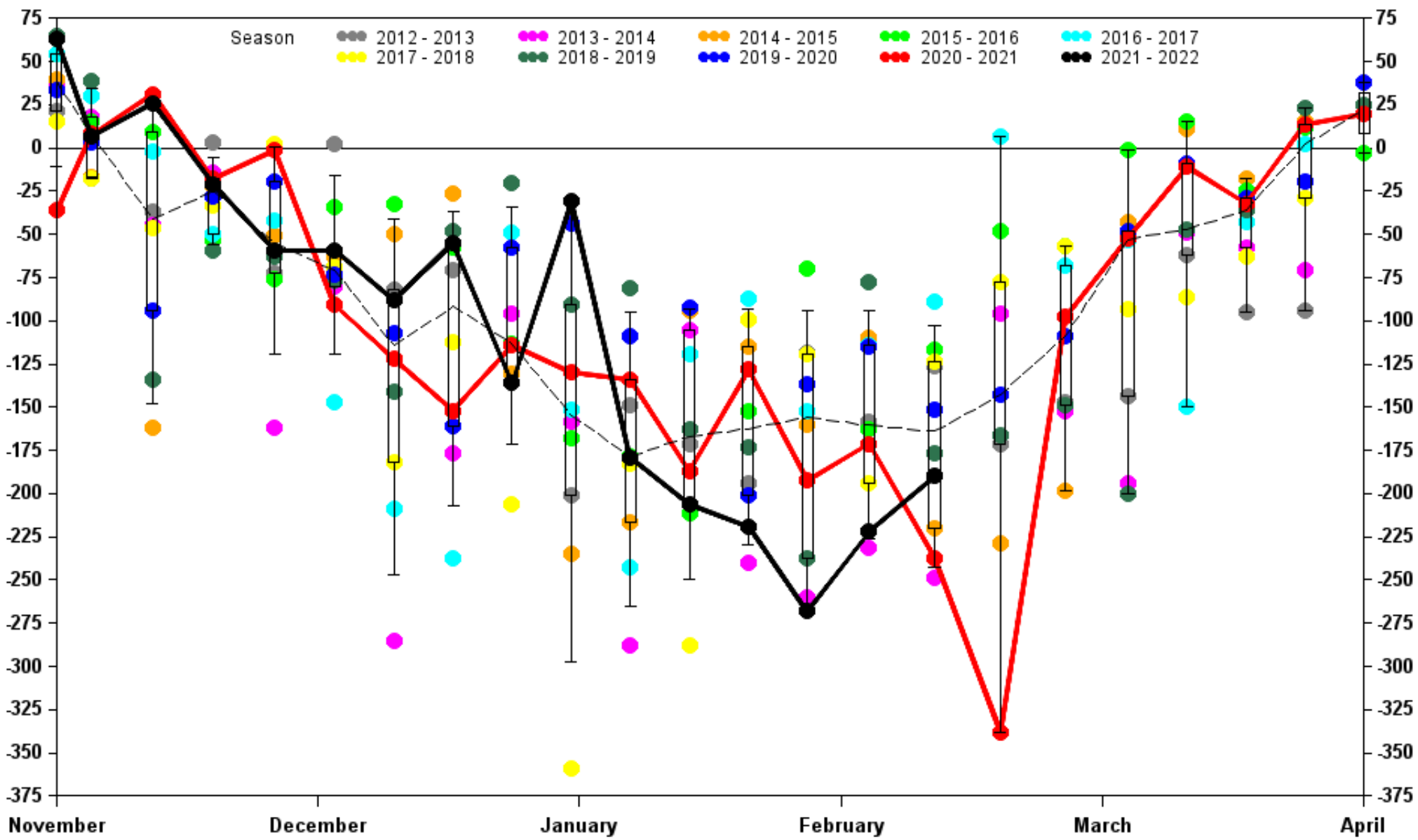
February 11, 2022

Cumulative Total Storage Withdrawal with 5-Year Average (Bcf)  
 Withdrawal -190 Cumulative Withdrawal -1,674 Average -1,617

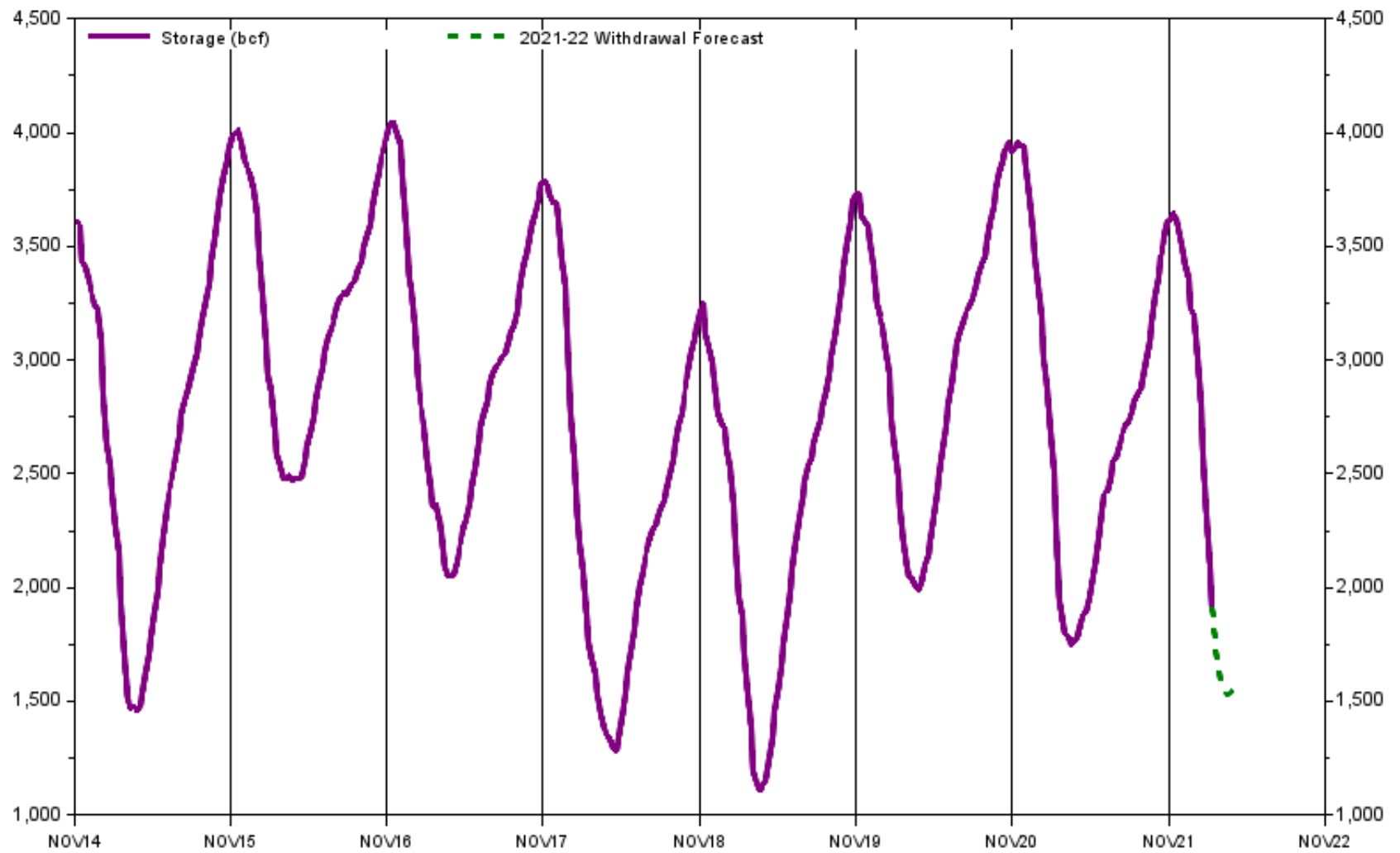


**Natural Gas Storage Withdrawal Season - Lower 48 Total Working Gas**  
**February 11, 2022** **Withdrawal Distribution** **-190 Bcf Week Change**

**2020-2021 Season (Red line)**      **2021-2022 Season (Black line)**      **10 Year Average (Dashed Line)**



EIA Weekly Natural Gas Storage Report  
 Lower 48 Natural Gas Storage with Forecast  
 February 11, 2022      1,911 Bcf in Storage      -190 bcf Week Change

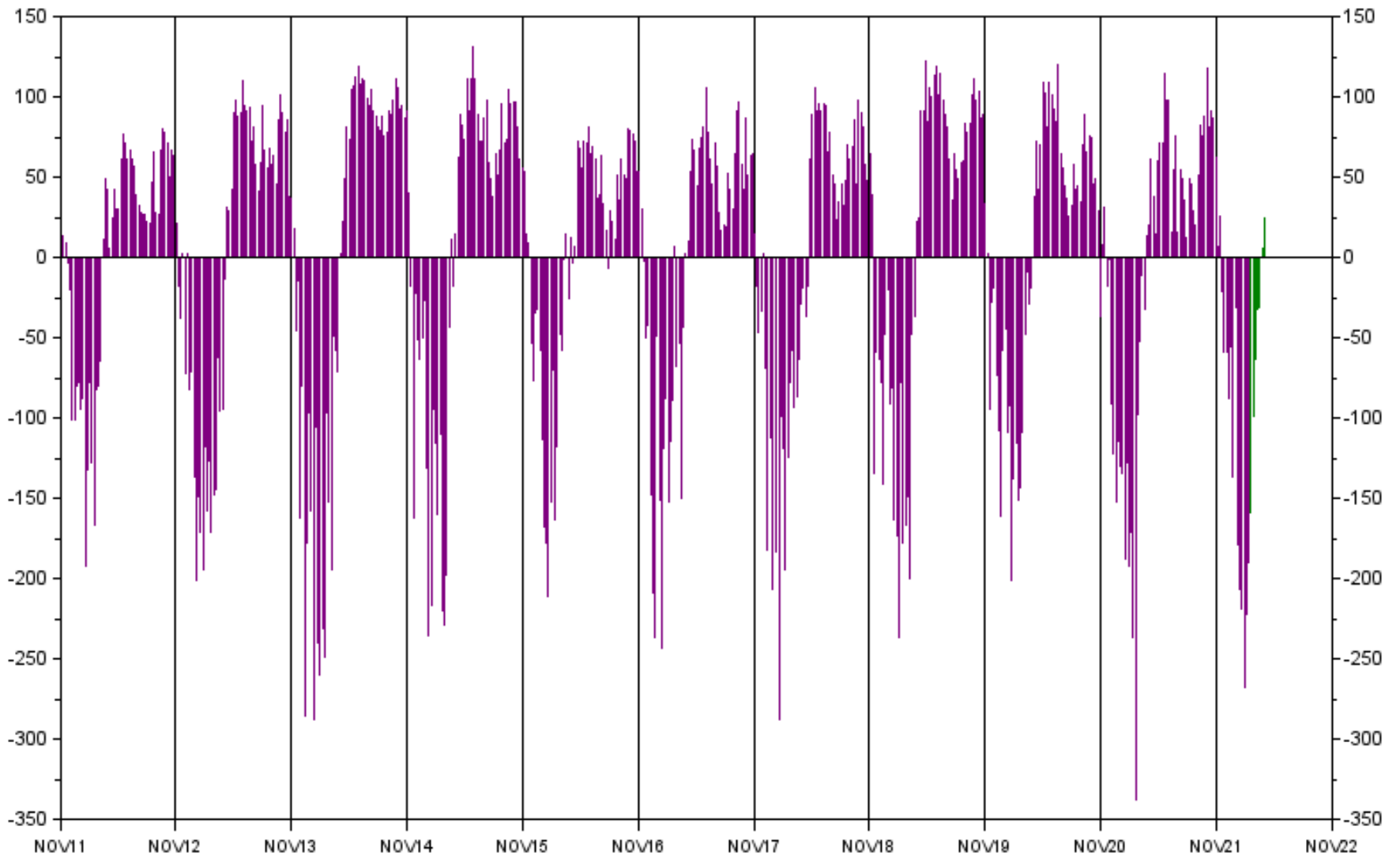


Sources: EIA Fundamental Analytics LLC

www.fundamentalanalytics.com

February 11, 2022

EIA Weekly Natural Gas Storage Report  
Lower 48 Natural Gas Storage with Forecast  
1,911 Bcf in Storage -190 bcf Week Change

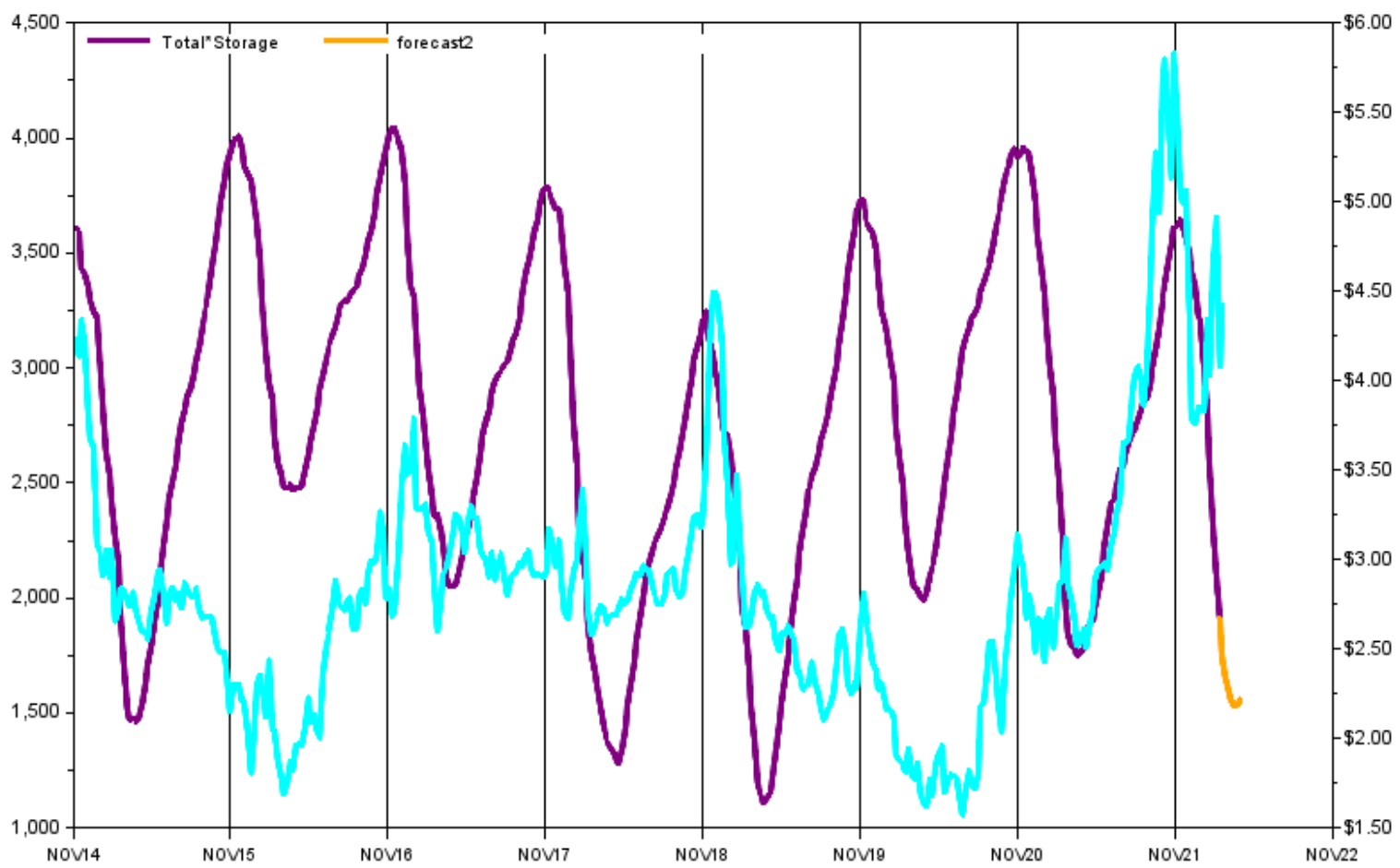


Sources: EIA Fundamental Analytics LLC

www.fundamentalanalytics.com

February 11, 2022

EIA Weekly Natural Gas Storage Report  
Lower 48 Natural Gas Storage with Forecast  
1,911 Bcf in Storage -190 bcf Week Change

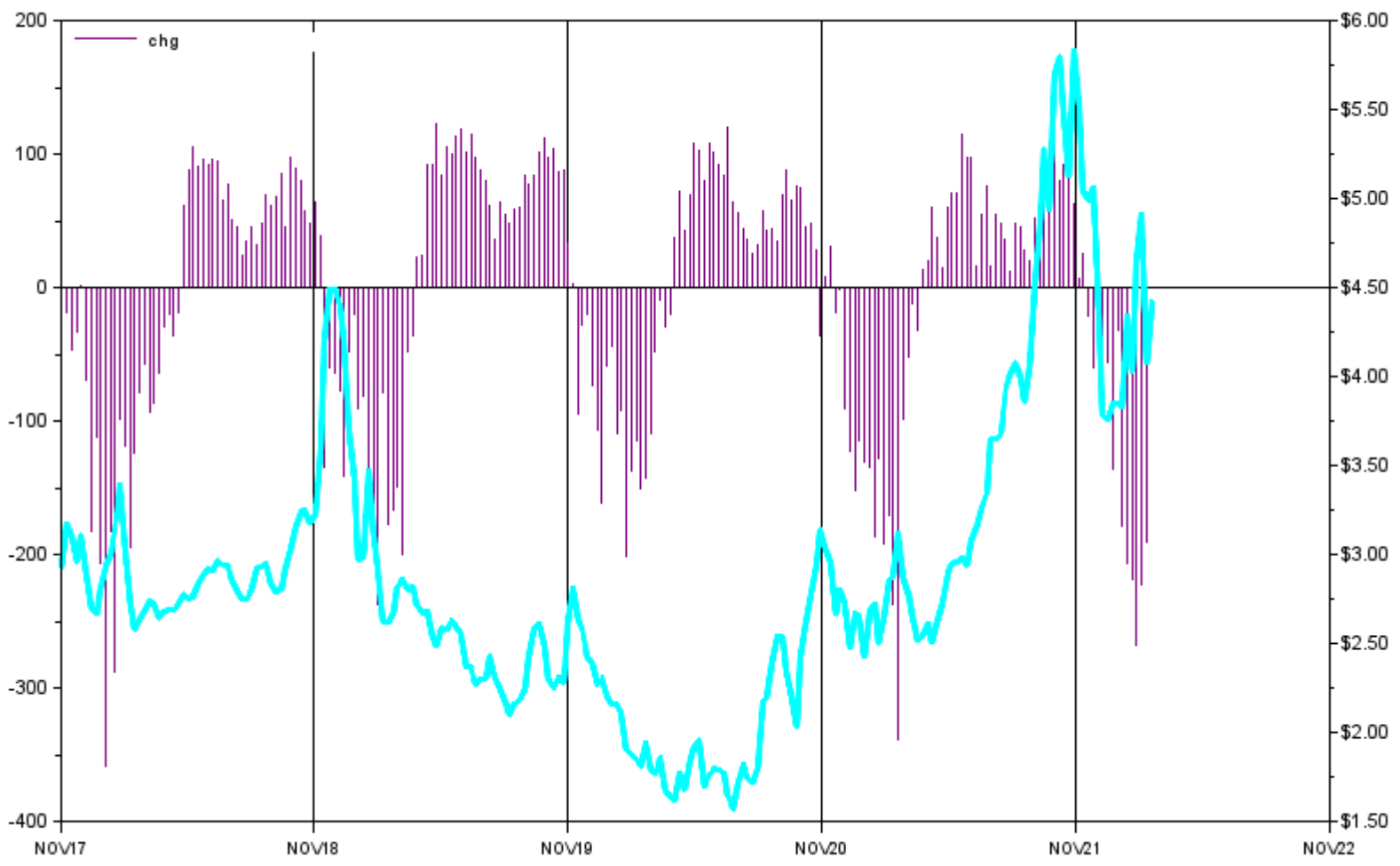


Sources: EIA Fundamental Analytics LLC

www.fundamentalanalytics.com

EIA Weekly Natural Gas Storage Report  
Lower 48 Natural Gas Storage with Forecast  
1,911 Bcf in Storage -190 bcf Week Change

February 11, 2022



Sources: EIA Fundamental Analytics LLC

[www.fundamentalanalytics.com](http://www.fundamentalanalytics.com)