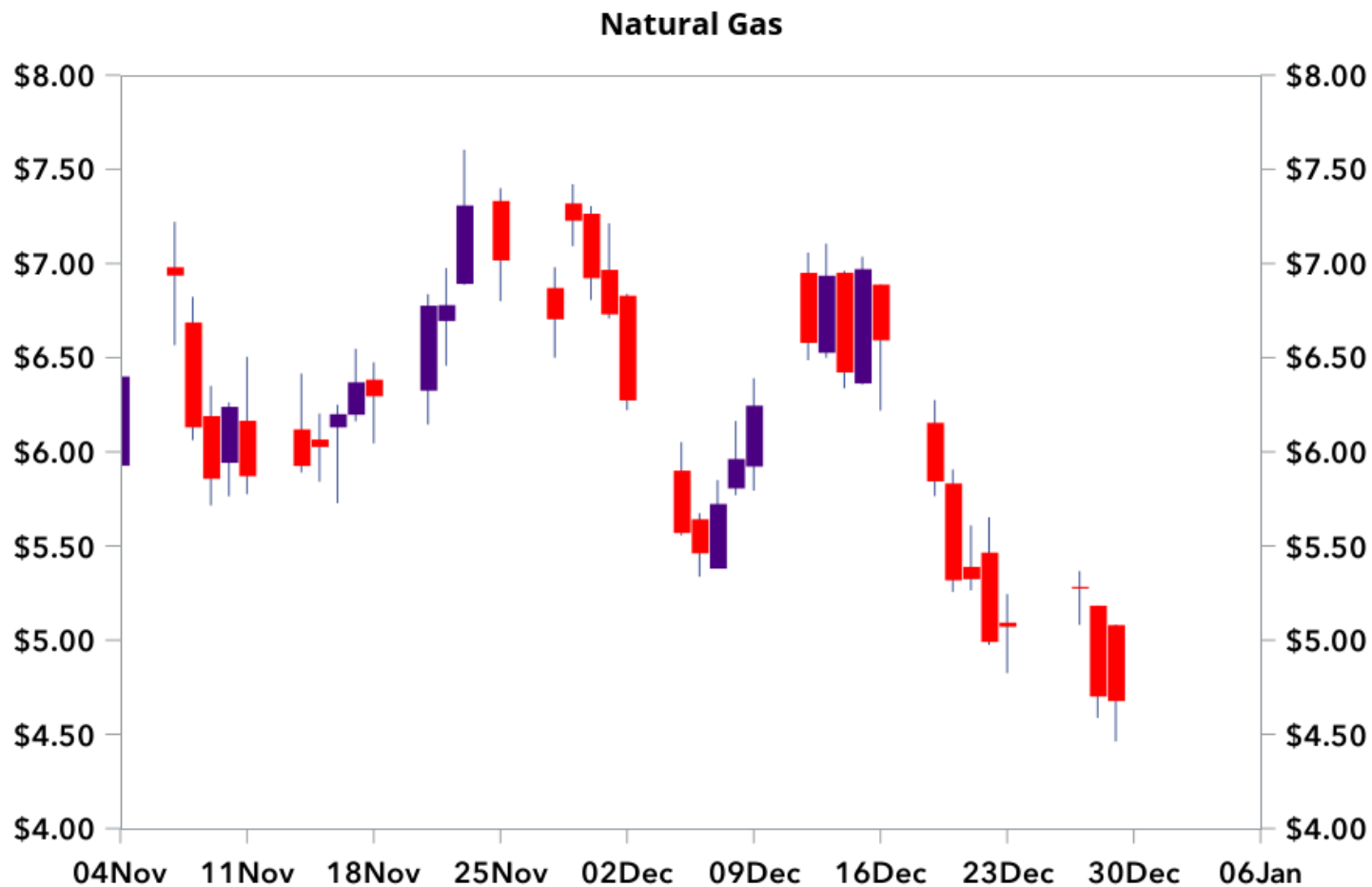


Natural Gas Storage Data, Tables, and Charts

Even the latest withdrawal the largest for this week of the Winter Season could not provide support to Natural Gas Prices



EIA Weekly Natural Gas Storage Data Report

December 23, 2022

| | Bcf in Storage | Week Change | Last Week Storage | Week Change | Last Year Storage |
|------------------------|---------------------------|------------------------|------------------------------|------------------------|------------------------------|
| East Region | 747 | -42 | 789 | -33 | 777 |
| Midwest Region | 899 | -75 | 974 | -28 | 918 |
| Mountain Region | 166 | -12 | 178 | -8 | 180 |
| Pacific Region | 165 | -21 | 186 | -17 | 235 |
| South Region | 1,136 | -63 | 1,199 | 0 | 1,116 |
| Salt Region | 323 | -17 | 340 | +3 | 326 |
| Non Salt Region | 813 | -45 | 858 | -4 | 790 |
| Total Storage | 3,112 | -213 | 3,325 | -87 | 3,226 |

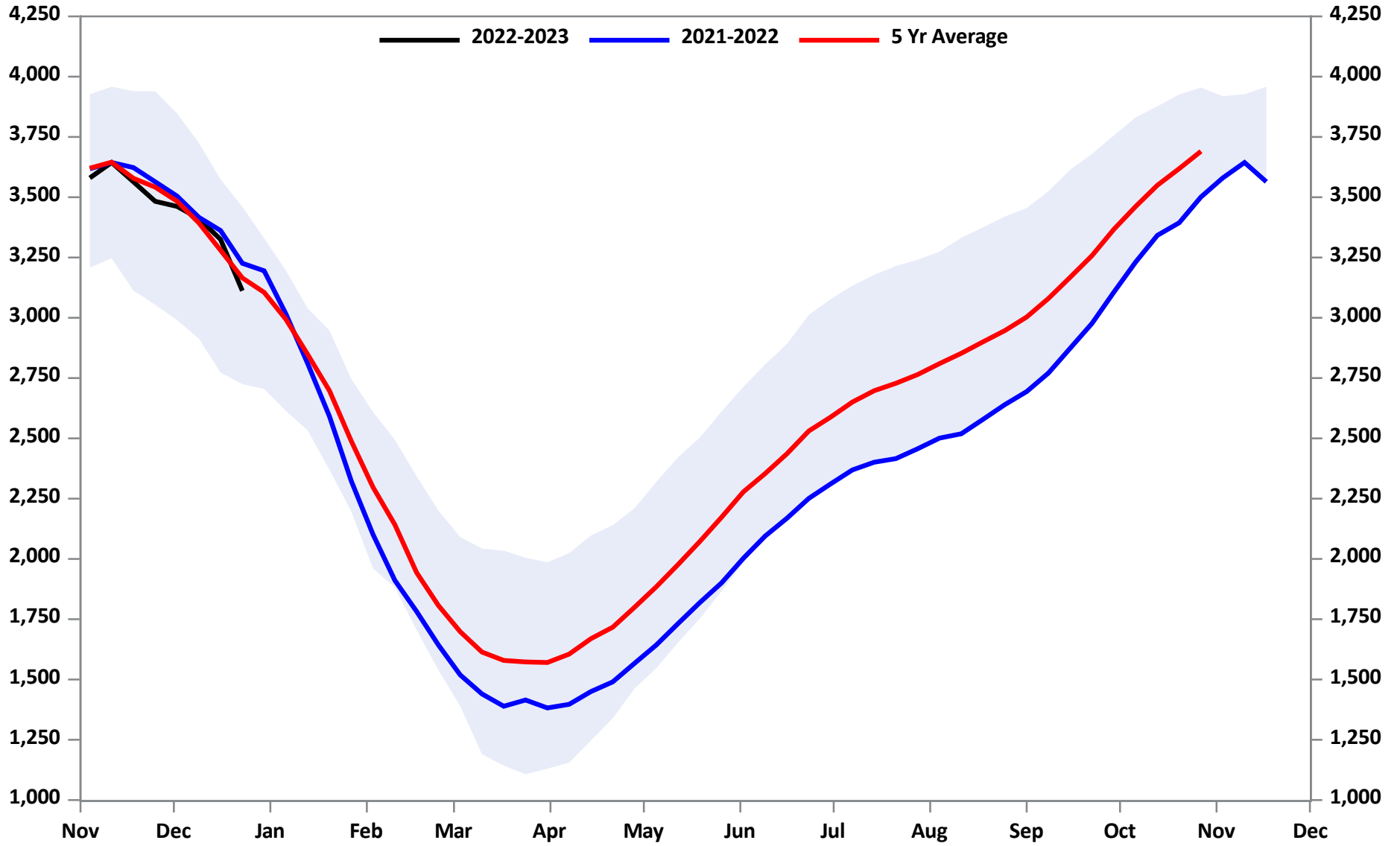
EIA Weekly Natural Gas Storage Data Report

Detail of Data

| | Total Storage Working Gas | Week Change | Last Year Storage | Last Year Change | Delta to Last Year | Five Year Average | Five Year Change | Delta to Five Year Average | NYMEX Average Price | Week Change |
|---------|---------------------------|-------------|-------------------|------------------|--------------------|-------------------|------------------|----------------------------|---------------------|-------------|
| 16SEP22 | 2,874 | 103 | 3,082 | 76 | -208 | 3,240 | 70 | -366 | \$8.35 | 0.37 |
| 23SEP22 | 2,977 | 103 | 3,170 | 88 | -193 | 3,323 | 83 | -346 | \$7.43 | -0.91 |
| 30SEP22 | 3,106 | 129 | 3,288 | 118 | -182 | 3,417 | 94 | -311 | \$6.81 | -0.62 |
| 07OCT22 | 3,231 | 125 | 3,369 | 81 | -138 | 3,489 | 72 | -258 | \$6.79 | -0.02 |
| 14OCT22 | 3,342 | 111 | 3,461 | 92 | -119 | 3,560 | 70 | -218 | \$6.53 | -0.26 |
| 21OCT22 | 3,394 | 52 | 3,548 | 87 | -154 | 3,623 | 64 | -229 | \$5.50 | -1.03 |
| 28OCT22 | 3,501 | 107 | 3,611 | 63 | -110 | 3,651 | 28 | -150 | \$5.46 | -0.05 |
| 04NOV22 | 3,580 | 79 | 3,618 | 7 | -38 | 3,659 | 8 | -79 | \$6.14 | 0.68 |
| 11NOV22 | 3,644 | 64 | 3,644 | 26 | 0 | 3,616 | -43 | 28 | \$6.21 | 0.07 |
| 18NOV22 | 3,564 | -80 | 3,623 | -21 | -59 | 3,584 | -32 | -20 | \$6.17 | -0.05 |
| 25NOV22 | 3,483 | -81 | 3,564 | -59 | -81 | 3,556 | -28 | -73 | \$6.97 | 0.80 |
| 02DEC22 | 3,462 | -21 | 3,505 | -59 | -43 | 3,482 | -74 | -20 | \$6.78 | -0.19 |
| 09DEC22 | 3,412 | -50 | 3,417 | -88 | -5 | 3,354 | -128 | 58 | \$5.80 | -0.98 |
| 16DEC22 | 3,325 | -87 | 3,362 | -55 | -37 | 3,249 | -106 | 76 | \$6.70 | 0.91 |
| 23DEC22 | 3,112 | -213 | 3,226 | -136 | -114 | 3,142 | -107 | -30 | \$5.38 | -1.33 |

December 23, 2022
3,112 Bcf in Storage

EIA Weekly Natural Gas Storage Report
-213 Bcf Week Withdrawal



Source: EIA Fundamental Analytics

www.fundamentalanalytics.com

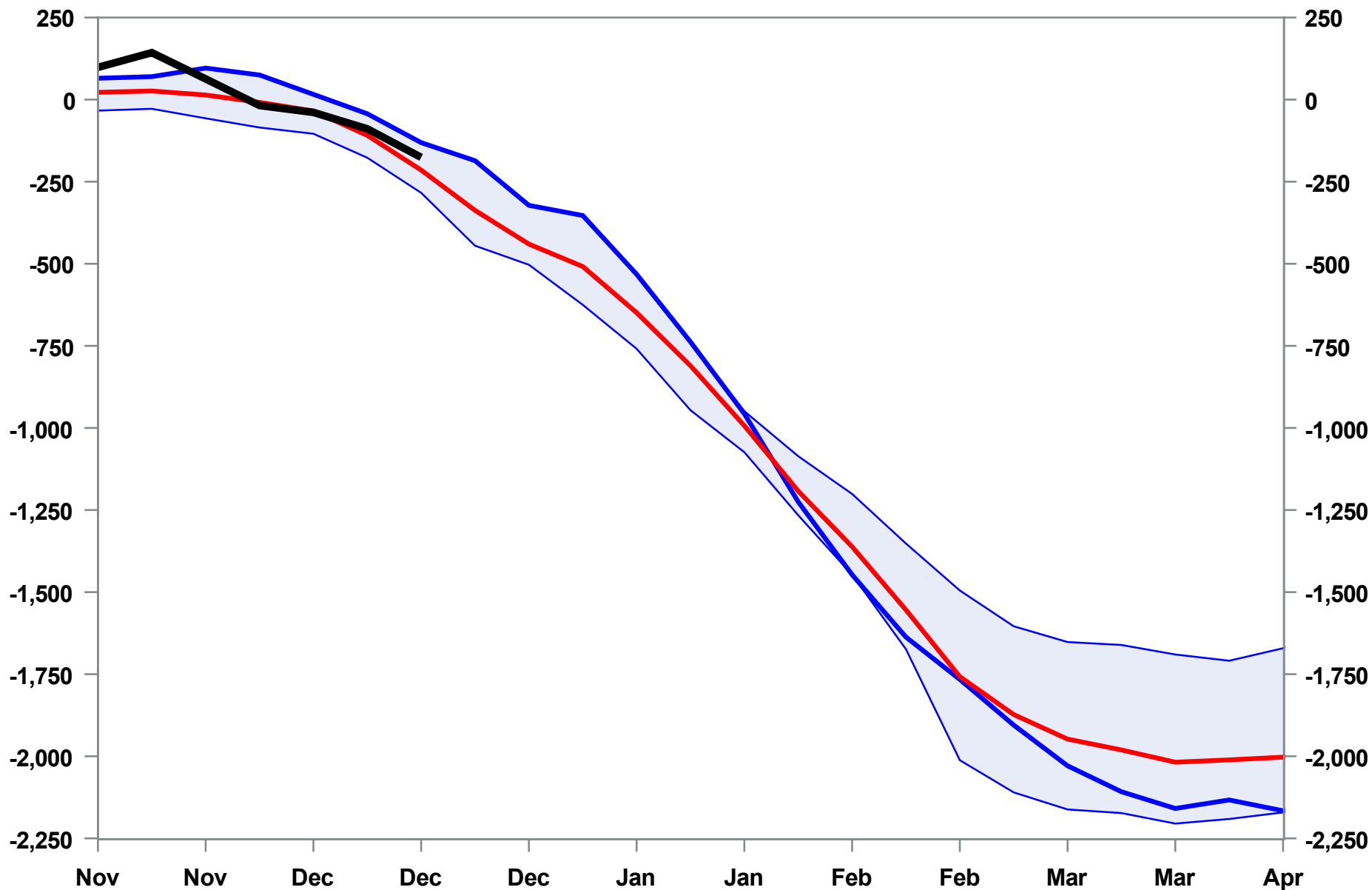
As of December 16, 2022

Natural Gas Storage Cumulative Withdrawal

. Bcf

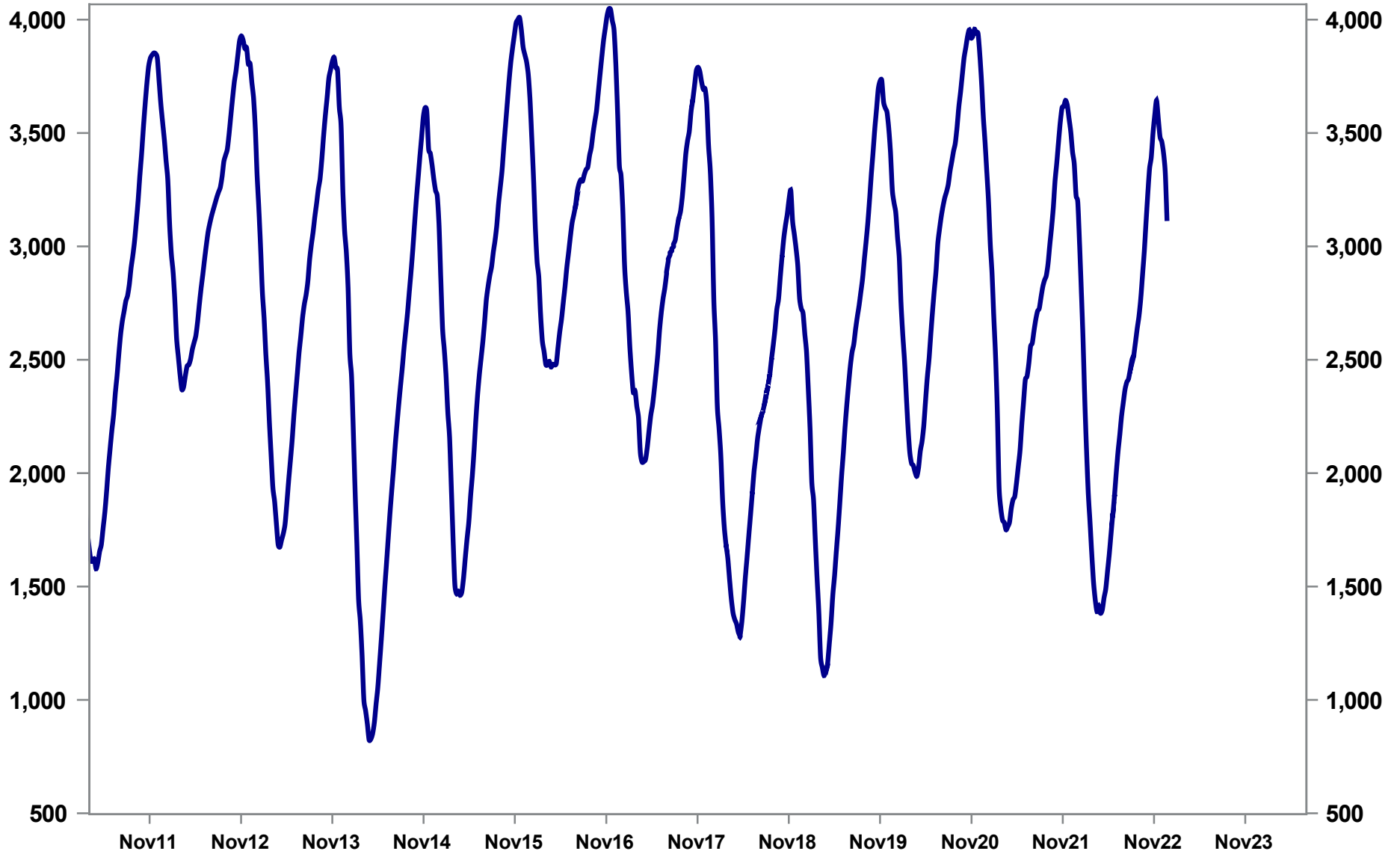
5-Year Average

2022-23 Data



December 23, 2022
3,112 Bcf in Storage

EIA Weekly Natural Gas Storage Report
-213 Bcf Week Withdrawal



Source: EIA Fundamental Analytics

www.fundamentalanalytics.com

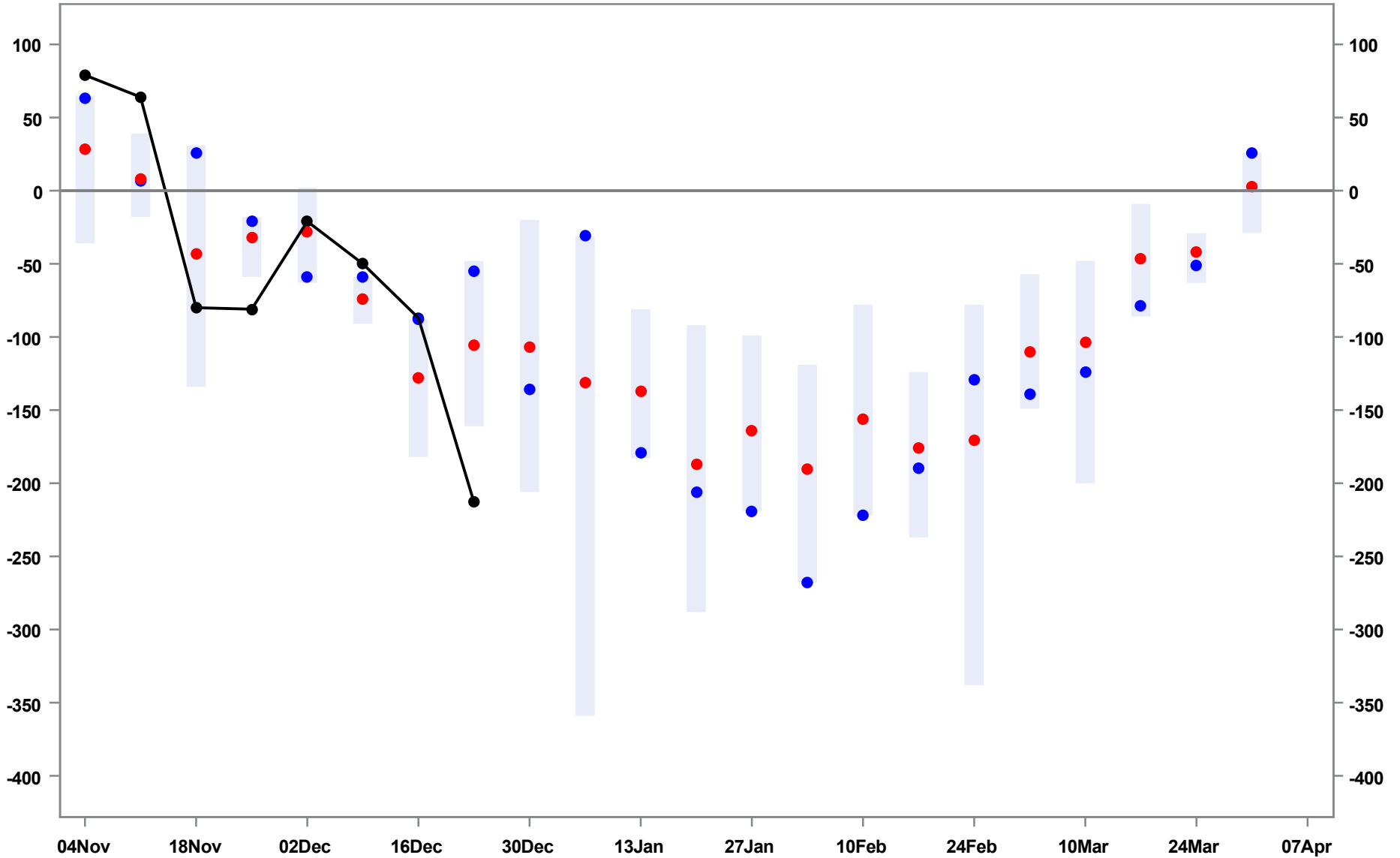
December 23, 2022
3,112 Bcf Storage

Natural Gas Weekly Winter Season Withdrawals

-213 Bcf Withdrawals

5-Year Average

2022-23 Season



Source: EIA Fundamental Analytics

www.fundamentalanalytics.com

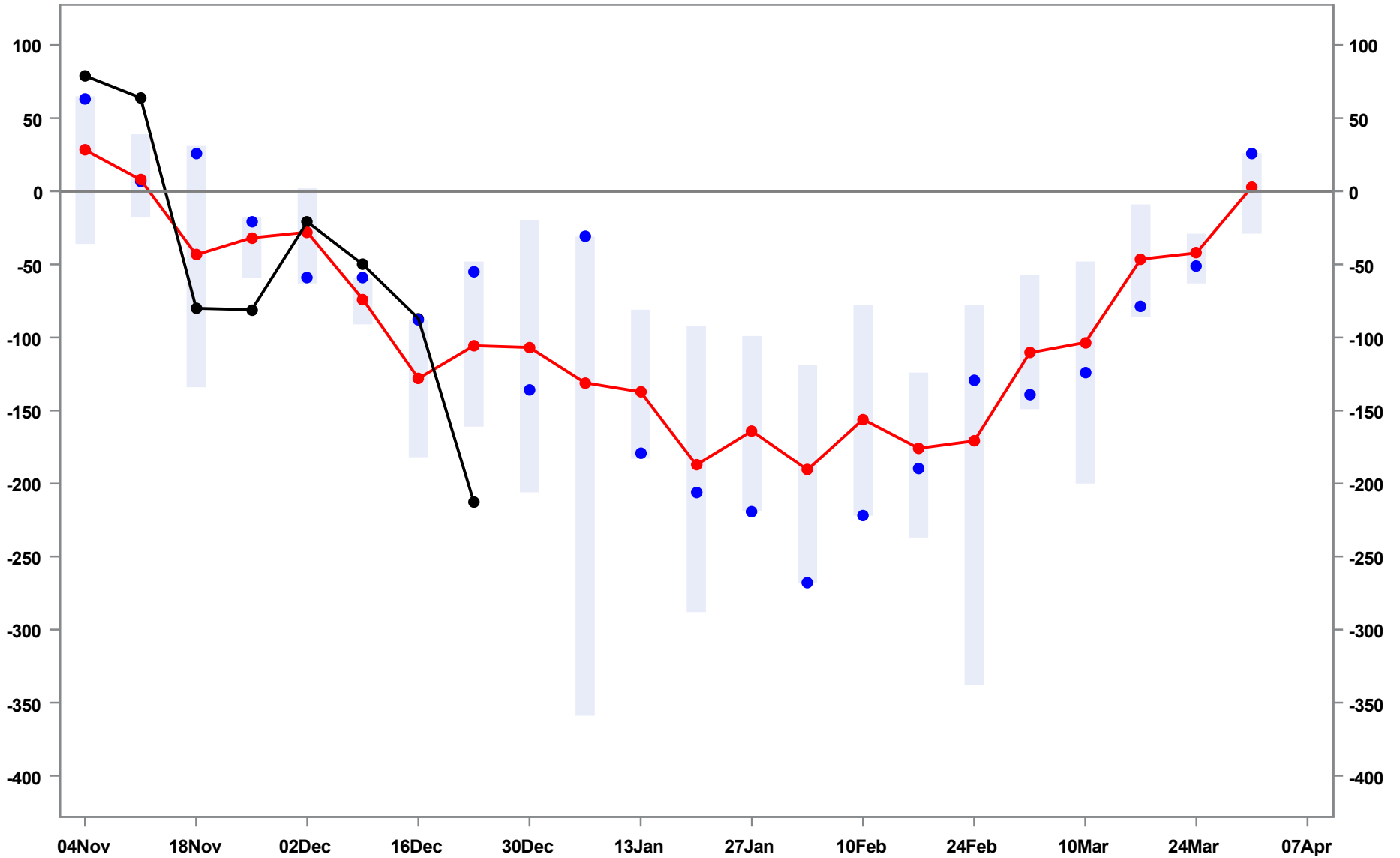
December 23, 2022
3,112 Bcf Storage

Natural Gas Weekly Winter Season Withdrawals

-213 Bcf Withdrawal

5-Year Average

2021-22 Season

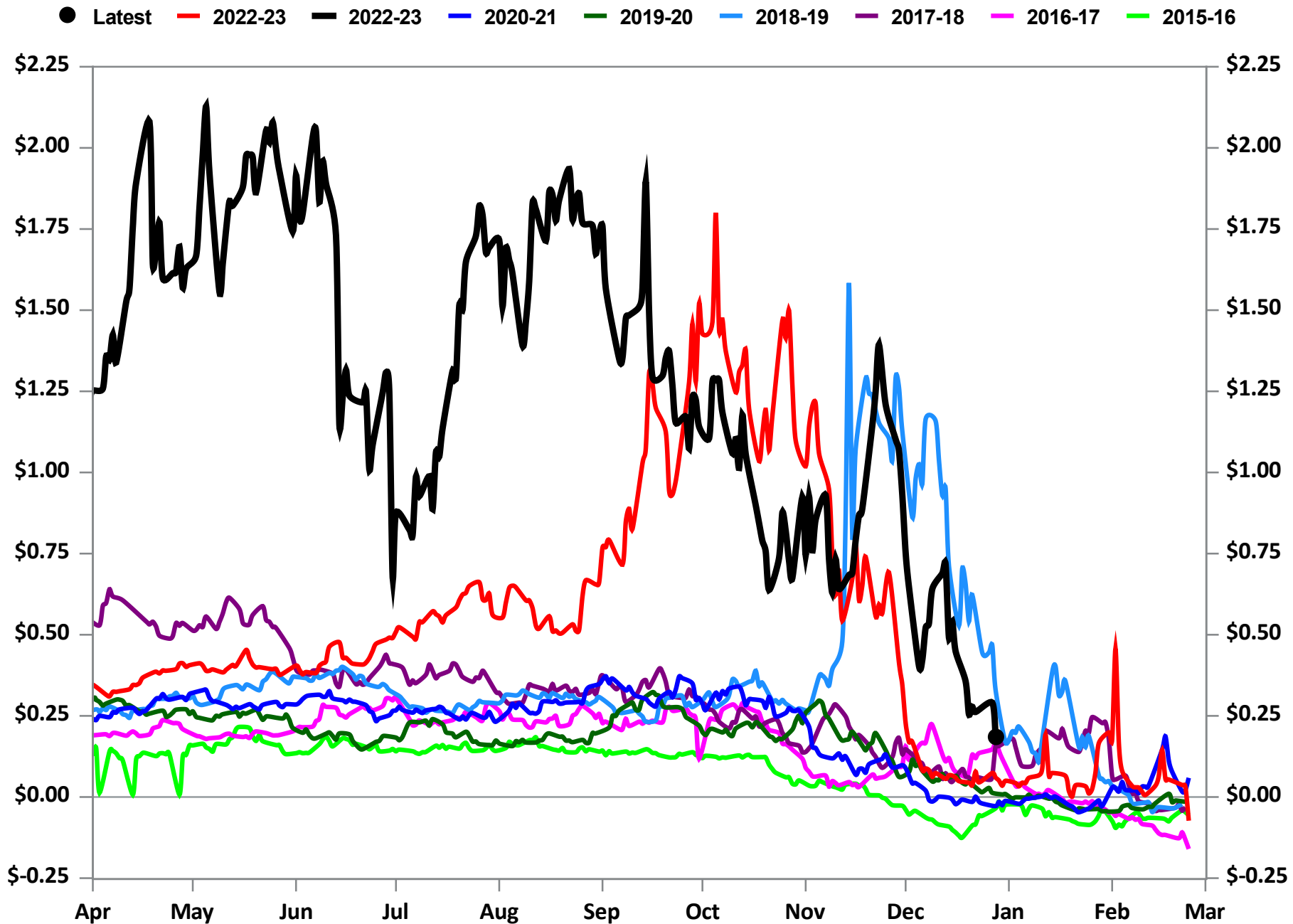


Source: EIA Fundamental Analytics

www.fundamentalanalytics.com

December 28, 2022

NYMEX March April Natural Gas Calendar Spread Latest: \$0.19



December 28, 2022

NYMEX March April Natural Gas Calendar Spread Latest: \$0.19

