



U.S. Energy Information
Administration



Natural Gas Storage Data, Tables, and Charts

Latest Data Update September 9, 2022

Provided by Fundamental Analytics

Comments on the EIA Natural Gas Storage Report	1
.	1
Latest Storage Data Table	2
Summary Table	2
Latest Data Tables	3
Details Table	3
November to November Storage History for Last 5-Years	4
With 5-Year Range	4
Cumulative Injection	5
With 5-Year Range	5
Injection Distribution Version 1	6
Weekly Historic Ranges	6
Injection Distribution Version 2	7
Weekly Historic Ranges	7
Forward Curve Table	8
September 15 and 14 Curves	8
Forward Curves Natural Gas	9
Time Series Plots	9
Daily High-Low-Close Bar Chart Natural Gas	10
Time Series Plots	10
NYMEX Natural Gas March-April Calendar Spread	11
Year on Year Plot	11
NYMEX Natural Gas March-April Calendar Spread	12
With Storage Plotted	12

EIA reported an injection of 77 Bcf natural gas into storage for the week ended September 9. The injection was greater than the average of estimates, 72 Bcf, added further pressure on natural gas futures with the October NYMEX Natural Gas futures closing down 79 cents. (See page 10)

Storage remains in deficit to last year and to the 5-year average and evidently traders believe the deficit will be a serious issue for next Spring. This is illustrated by the natural gas futures March-April calendar spread to be at record highs for time of the year. (See pages 11 and 12).

US natural gas futures were also pressured by the news that US railroads and unions had reached an agreement to avert a railroad strike that was expected to force generators to burn more gas to produce electricity. Prices had jumped to over \$9 in the previous session, supported by higher demand forecast and more coal-to-gas switching in case of the rail strike.

About two-thirds of the nation's coal-fired power plants receive their coal by rail.

Average gas output in the US Lower 48 states rose to 99.1 bcf/d so far in September from a record 98 bcf/d in August, according to data provider Refinitiv.

EIA Weekly Natural Gas Storage Data Report

September 9, 2022

	Bcf in Storage	Week Change	Last Week Storage	Week Change	Last Year Storage
East Region	661	26	635	21	732
Midwest Region	809	33	776	29	876
Mountain Region	163	4	159	2	193
Pacific Region	235	-3	238	-3	240
South Region	904	17	887	6	965
Salt Region	187	5	182	-3	217
Non Salt Region	717	12	705	9	748
Total Storage	2,771	77	2,694	54	3,006

EIA Weekly Natural Gas Storage Data Report

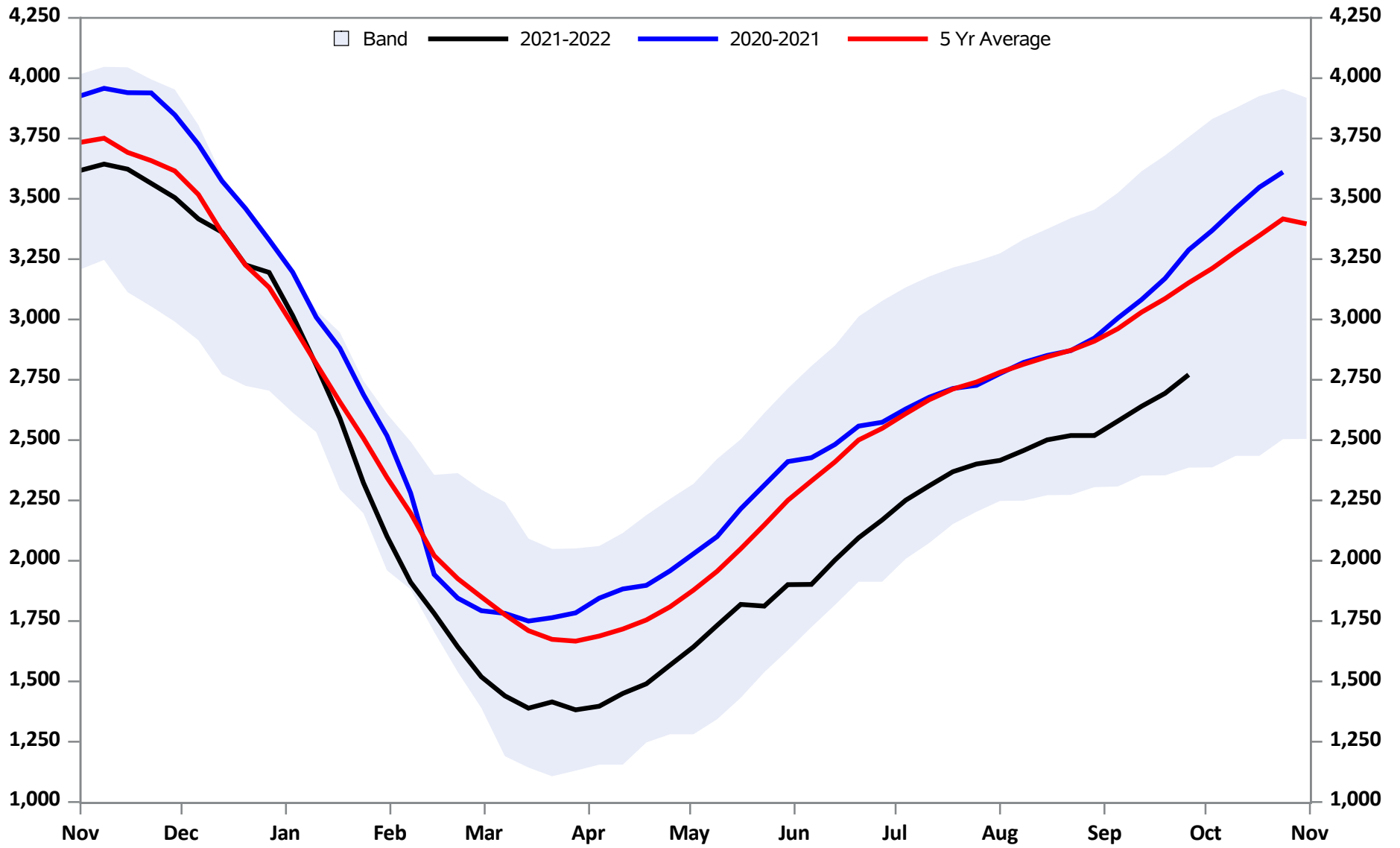
Detail of Data

	Total Storage Working Gas	Week Change	Last Year Storage	Last Year Change	Delta to Last Year	Five Year Average	Five Year Change	Delta to Five Year Average	NYMEX Average Price	Week Change
03JUN22	2,003	102	2,411	98	-408	2,386	93	-383	\$8.46	-0.37
10JUN22	2,095	92	2,427	16	-332	2,460	74	-365	\$9.03	0.56
17JUN22	2,169	74	2,482	55	-313	2,537	77	-368	\$7.53	-1.50
24JUN22	2,251	82	2,558	76	-307	2,611	74	-360	\$6.53	-0.99
01JUL22	2,311	60	2,574	16	-263	2,663	52	-352	\$6.14	-0.39
08JUL22	2,369	58	2,629	55	-260	2,710	47	-341	\$5.84	-0.30
15JUL22	2,401	32	2,678	49	-277	2,743	33	-342	\$6.58	0.74
22JUL22	2,416	15	2,714	36	-298	2,779	36	-363	\$7.80	1.22
29JUL22	2,457	41	2,727	13	-270	2,814	36	-357	\$8.66	0.86
05AUG22	2,501	44	2,776	49	-275	2,863	48	-362	\$8.09	-0.57
12AUG22	2,519	18	2,822	46	-303	2,911	48	-392	\$8.25	0.17
19AUG22	2,579	60	2,851	29	-272	2,957	47	-378	\$9.17	0.91
26AUG22	2,640	61	2,871	20	-231	3,011	53	-371	\$9.37	0.21
02SEP22	2,694	54	2,923	52	-229	3,083	72	-389	\$9.11	-0.26
09SEP22	2,771	77	3,006	83	-235	3,171	88	-400	\$7.97	-1.14

September 9, 2022
2,771 Bcf in Storage

EIA Weekly Natural Gas Storage Report

77 Bcf Week Injection



Source: EIA Fundamental Analytics

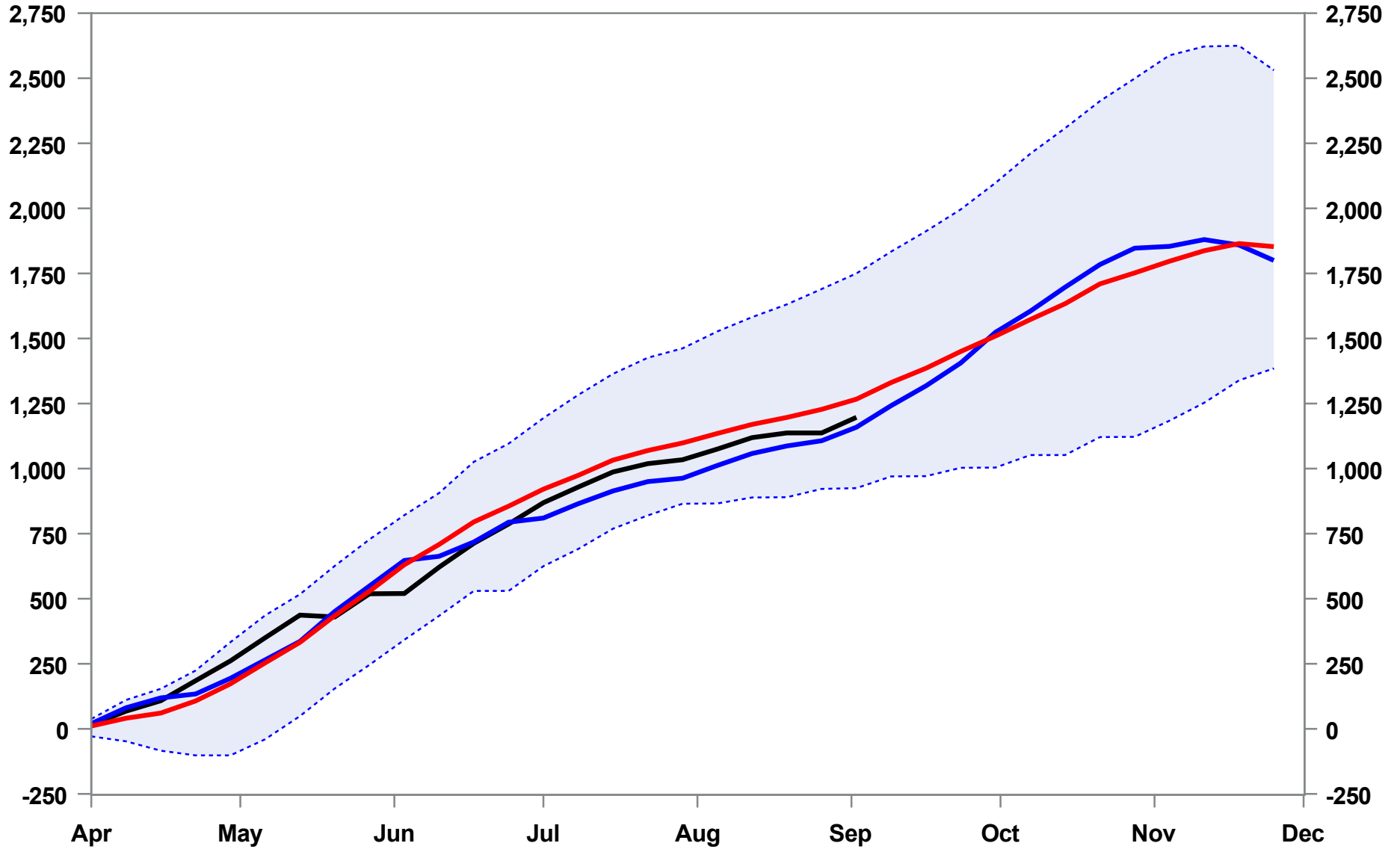
www.fundamentalanalytics.com

Cumulative Injection

1,197 Bcf

5-Year Average

2021 Data



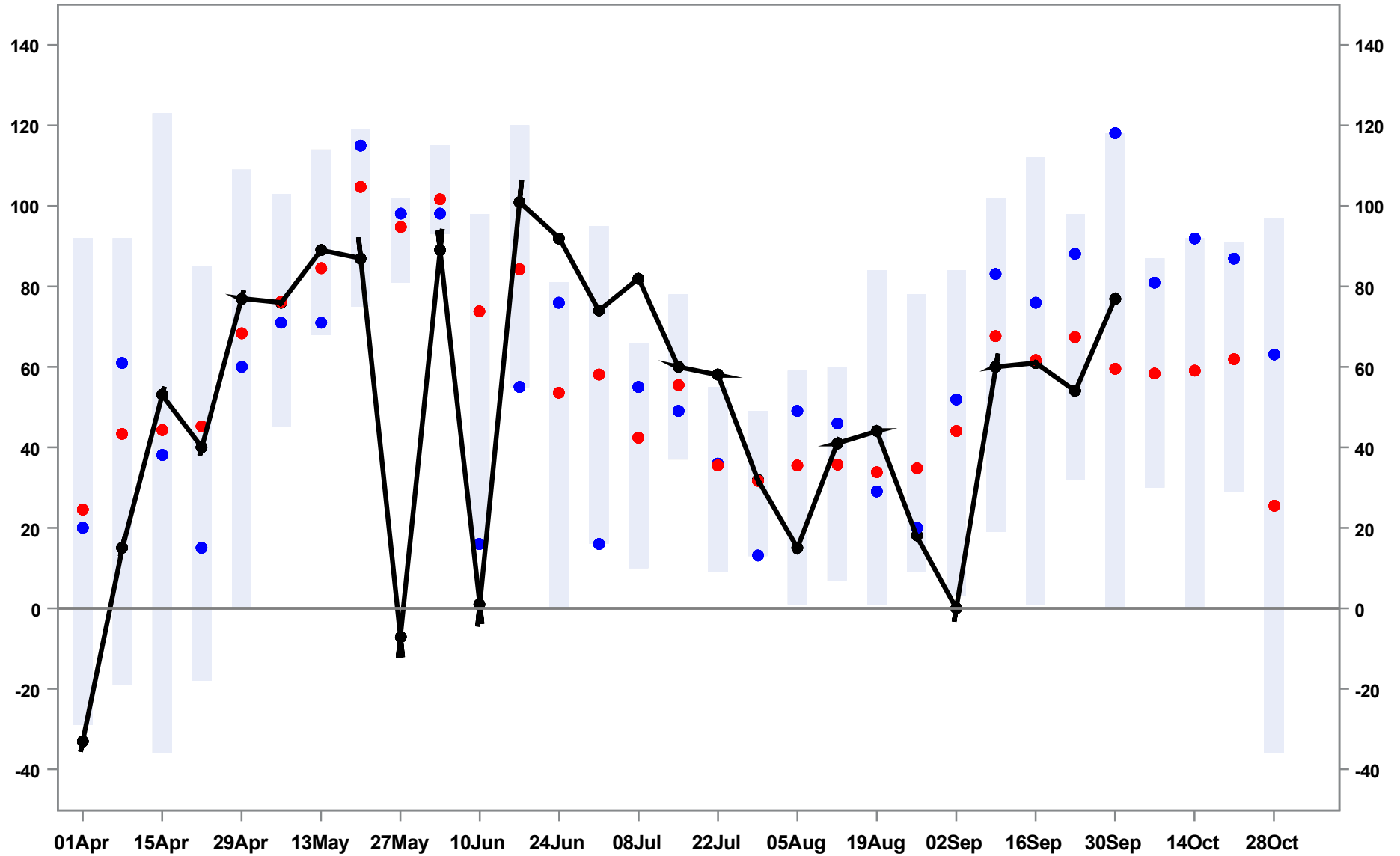
September 9, 2022
2,771 Bcf Storage

Natural Gas Weekly Summer Season Injections

77 Bcf Injection

5-Year Average

2021 Data



Source: EIA Fundamental Analytics

www.fundamentalanalytics.com

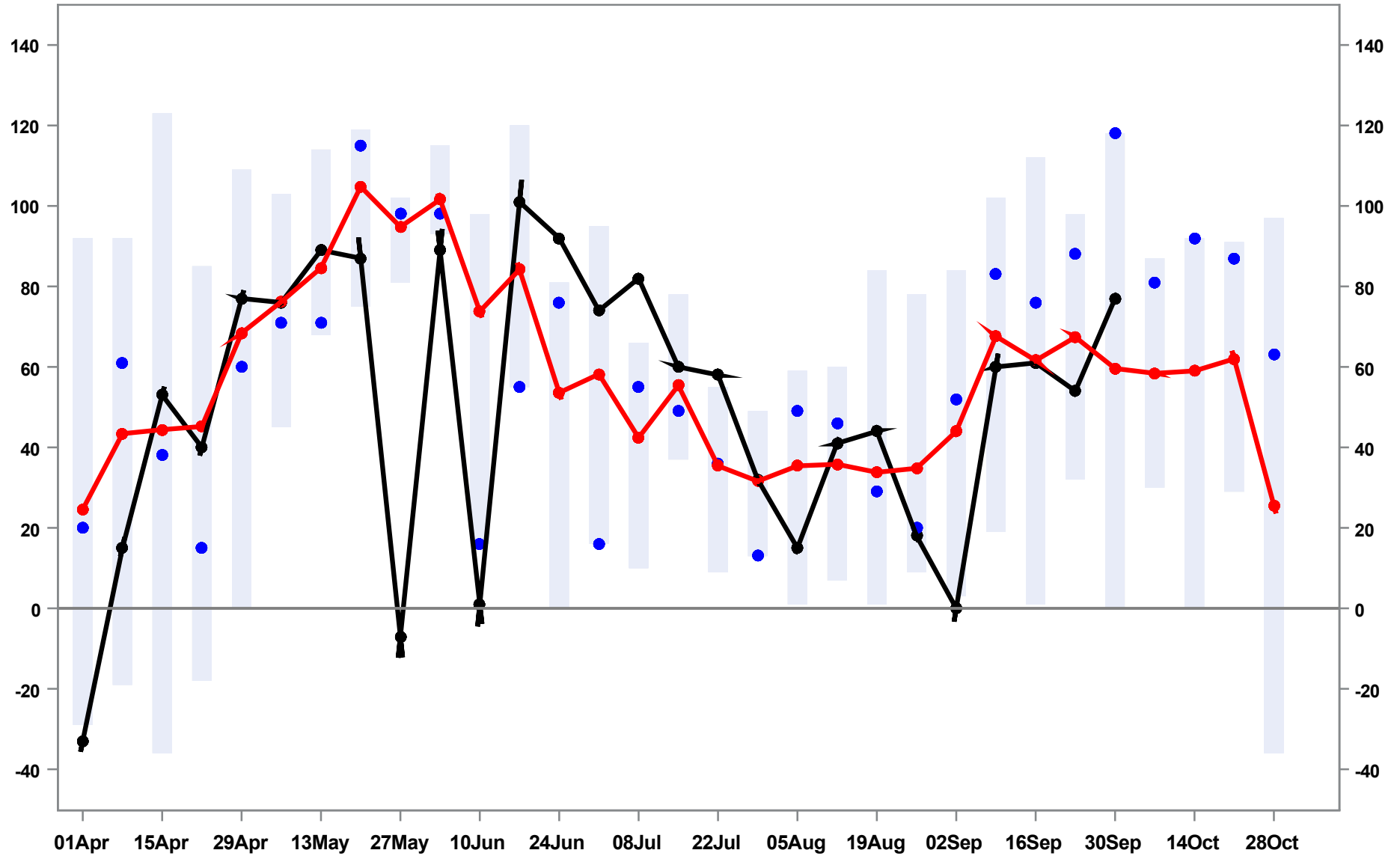
September 9, 2022
2,771 Bcf Storage

Natural Gas Weekly Summer Season Injections

77 Bcf Injection

5-Year Average

2021 Data



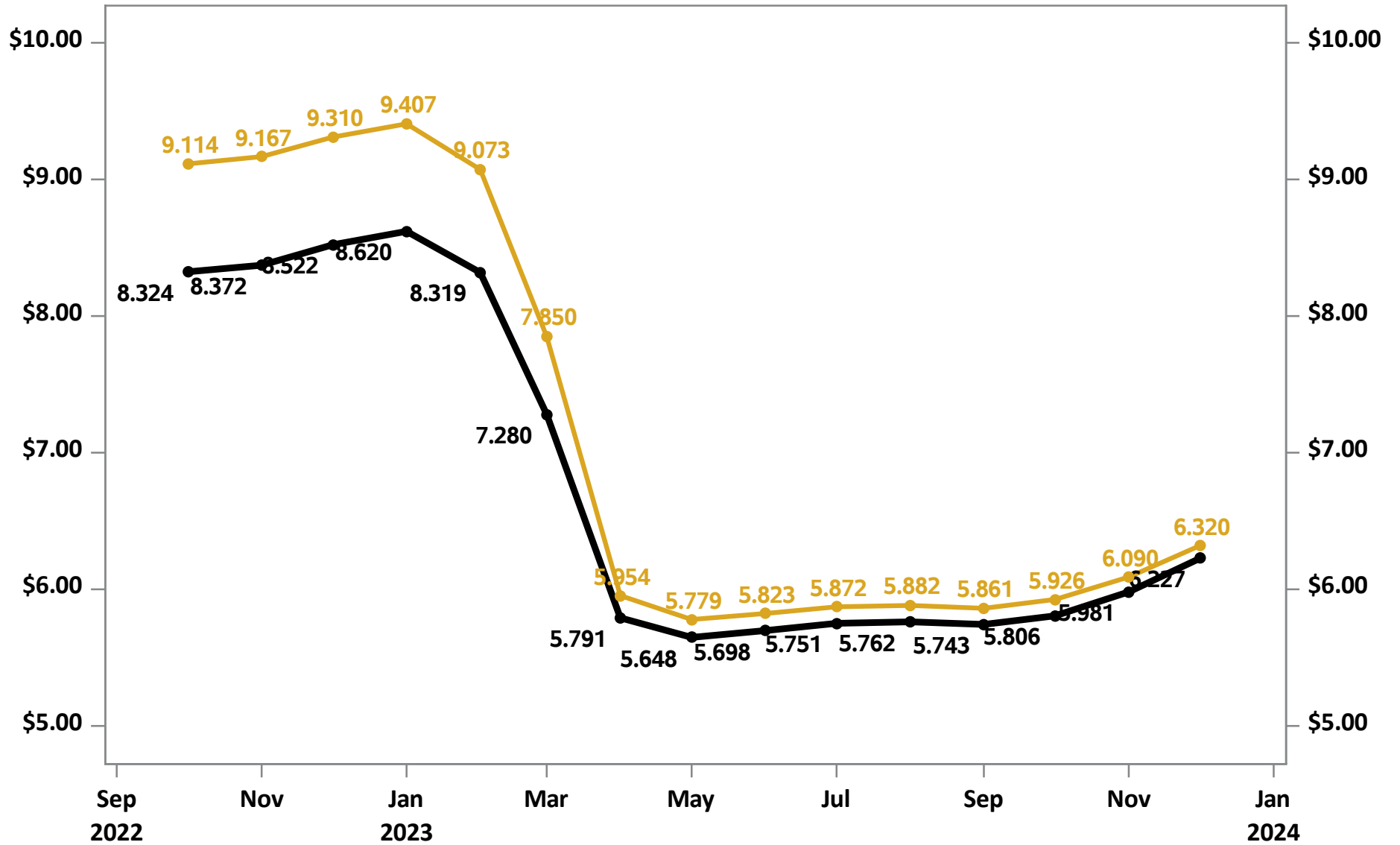
Source: EIA Fundamental Analytics

www.fundamentalanalytics.com

Forward Curves
September 15, 2022 September 14, 2022

	Latest	Change	Previous	Open	High	Low
OCT22	8.324	-0.790	9.114	9.073	9.117	8.172
NOV22	8.372	-0.795	9.167	9.134	9.159	8.260
DEC22	8.522	-0.788	9.310	9.257	9.286	8.400
JAN23	8.620	-0.787	9.407	9.363	9.370	8.512
FEB23	8.319	-0.754	9.073	9.024	9.038	8.217
MAR23	7.280	-0.570	7.850	7.804	7.850	7.179
APR23	5.791	-0.163	5.954	5.960	5.980	5.642
MAY23	5.648	-0.131	5.779	5.796	5.796	5.489
JUN23	5.698	-0.125	5.823	5.830	5.830	5.545
JUL23	5.751	-0.121	5.872	5.884	5.884	5.598
AUG23	5.762	-0.120	5.882	5.820	5.820	5.613
SEP23	5.743	-0.118	5.861	5.887	5.887	5.593
OCT23	5.806	-0.120	5.926	5.843	5.849	5.657
NOV23	5.981	-0.109	6.090	5.925	6.003	5.842
DEC23	6.227	-0.093	6.320	6.172	6.245	6.084

Forward Curves
 September 14, 2022 September 15, 2022



Source: EIA Fundamental Analytics

www.fundamentalanalytics.com

September 15, 2022

Natural Gas Daily High-Low-Close

Settle \$8.324

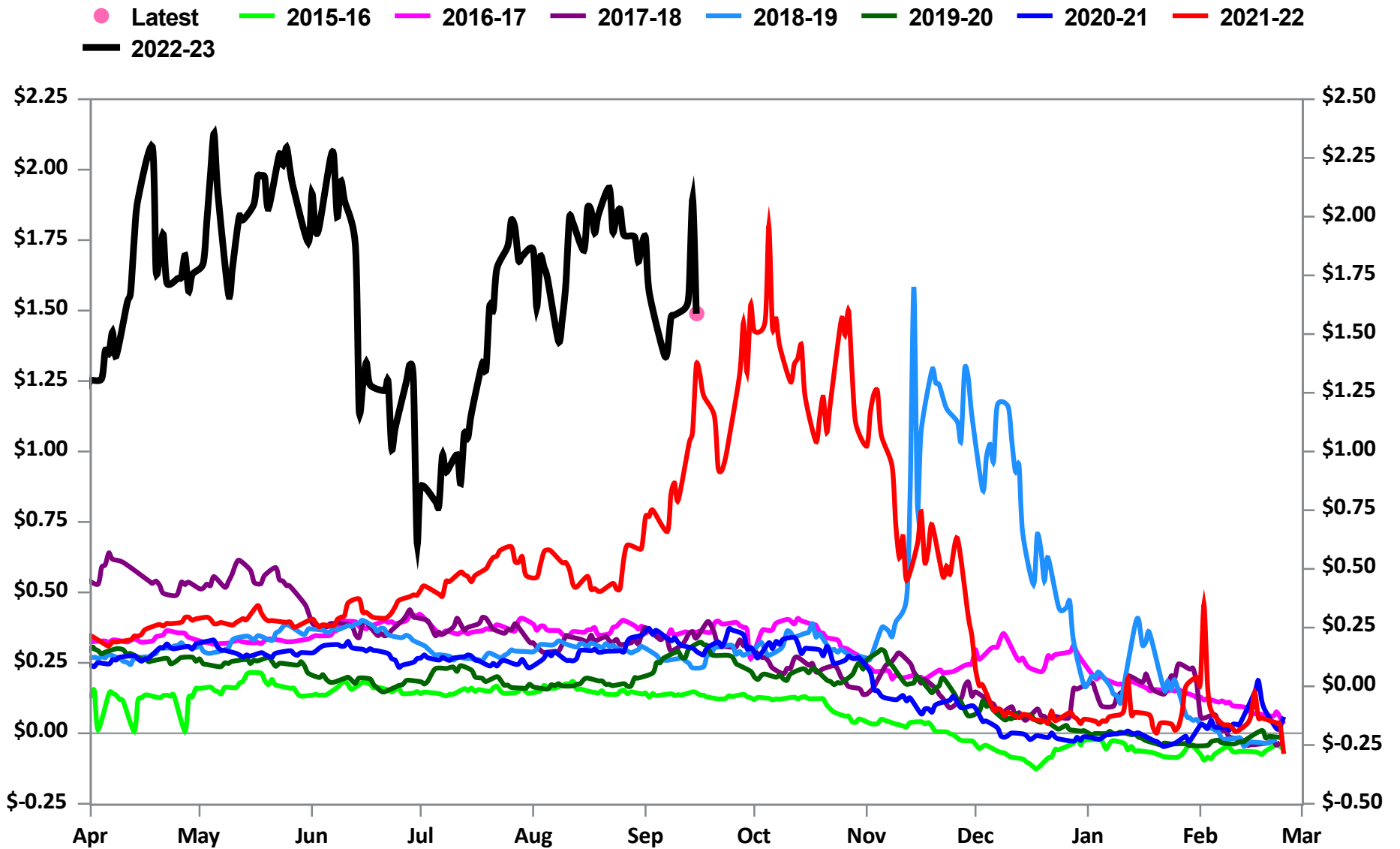
-.79 Change



Source: EIA Fundamental Analytics

www.fundamentalanalytics.com

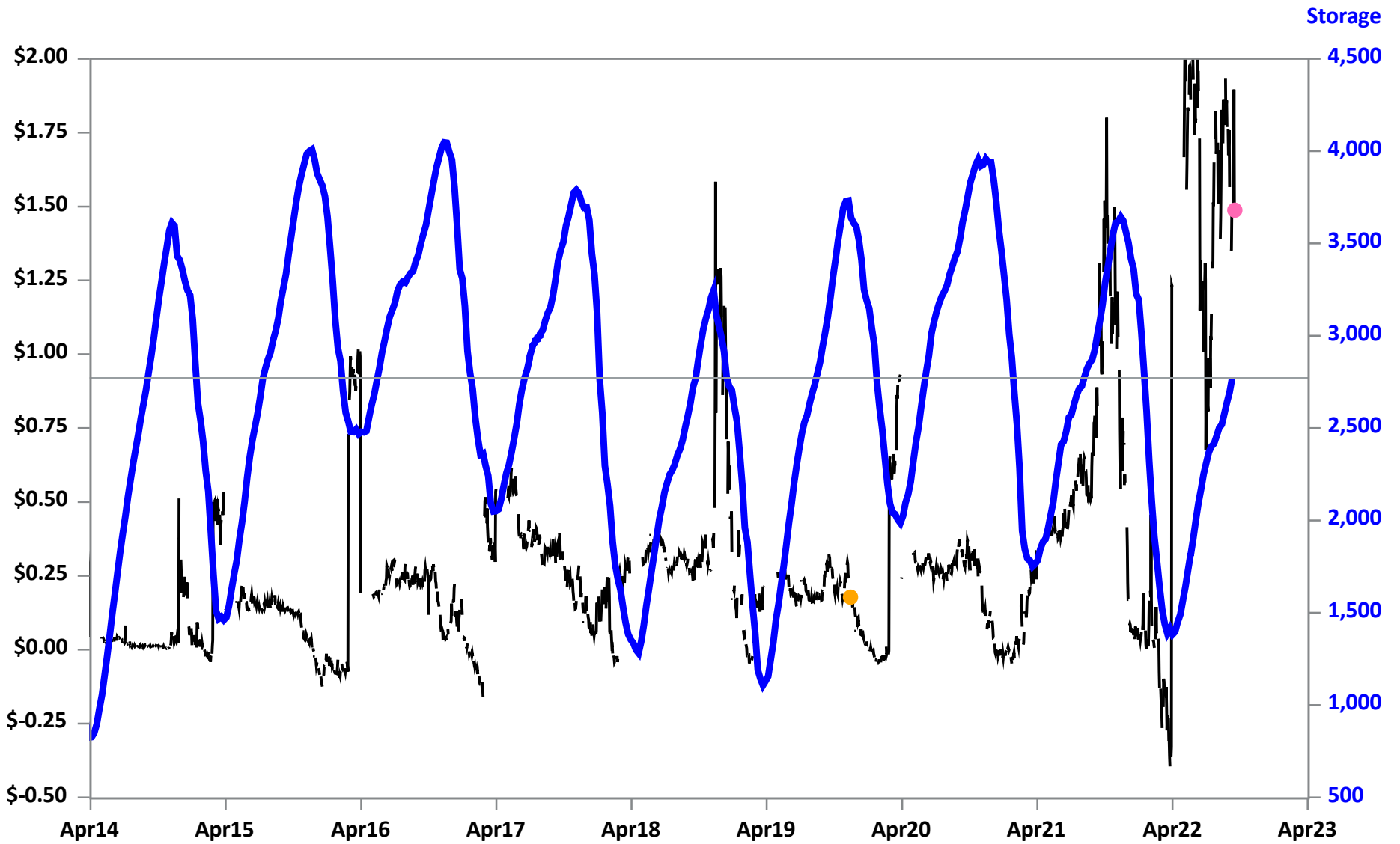
NYMEX March April Natural Gas Calendar Spread



Source: EIA Fundamental Analytics

www.fundamentalanalytics.com

NYMEX March April Natural Gas Calendar Spread



Source: EIA Fundamental Analytics

www.fundamentalanalytics.com