



U.S. Energy Information
Administration



Weekly Petroleum Status Report

Tables, Charts, and Comments

Latest Data Update November 4, 2022

Provided by Fundamental Analytics

EIA Weekly Petroleum Status Report November 4, 2022 Update

Highlights of the EIA Petroleum Report	1
.....	1
EIA Weekly Petroleum Summary	2
Table: Stocks Summary	3
Table: Stocks by PADD	3
Table: Stocks by PADD cont.	3
Table: Crude Runs	4
Table: Refinery Runs	4
.....	4
Crude Oil Stocks	5
With 5 Year Range	5
Total Crude Stocks with NYMEX WTI Prices	6
Time Series Plots	6
Total Crude Stocks Delta to Previous Year with Crude Prices	7
Time Series Plots	7
Cushing Crude Oil Stocks	8
With 5 Year Range	8
PADD 2 Crude Oil Stocks	9
With 5 Year Range	9
PADD 3 Oil Stocks	10
With 5 Year Range	10
Total Crude Oil Production	11
Time Series Plot	11
Crude Oil Days Forward Supply	12
With 5 Year Range	12
Total Petroleum Stocks	13
With 5 Year Range	13
Total Crude Imports	14
With Five Year Range	14

Refinery Utilization	15
With Five Year Range	15
Crude Runs	16
With 5 Year Range	16
Total Crude Oil Exports with Quarterly Averages	17
.....	17
Gasoline 2022 Year to Date Table	18
.....	18
Total Gasoline Stocks	21
With Five Year Range	21
Total Gasoline Production	22
With Five Year Range	22
Gasoline Imports	23
With 5-Year Range	23
Total Gasoline Demand	24
With Five Year Range	24
Total Gasoline Days Forward Supply	25
With Five Year Range	25
PADD 1 Gasoline Stocks	26
With Five Year Range	26
PADD 1 Gasoline Production	27
With Five Year Range	27
PADD 1 Gasoline Demand	28
With Five Year Range	28
PADD 1 Gasoline Days Forward Supply	29
.....	29
Distillates 2022 Year to Date Table	30
.....	30
Total Distillates Stocks	33
With Five Year Range	33
Total Distillates Production	34
With Five Year Range	34
Total Distillates Demand	35
With Five Year Range	35
Total Distillates Days Forward Supply	36
With Five Year Range	36

Total Distillates Exports	37
With 5 Year Range	37
PADD 3 Distillates Stocks	38
With Five Year Range	38
PADD 3 Distillates Production	39
With Five Year Range	39
PADD 3 Distillates Demand	40
With Five Year Range	40
PADD 3 Distillates Days Forward Supply	41
With Five Year Range	41

The EIA reported that crude inventories rose +3.93 million bbl to a 16-month high, a larger build than the average of expectations of +250,000 bbl. As a result crude oil and gasoline prices dropped sharply to 1-week lows. A stronger dollar on Wednesday also pressured energy prices.

In addition a weak Chinese energy demand outlook was attributed to pressuring energy prices as new Covid infections in China continue to climb.

Conversely, the EIA reported gasoline supplies fell -900,000 bbl to an 8-year low.

Also, Cushing crude oil stocks, the delivery point of WTI futures, fell by -923,000 bbl.

With this report U.S. crude oil stocks are now 2.2% below the 5-year average, gasoline stocks are 6.2% below the 5-year average, and distillate stocks are 18.2% below the 5-year seasonal average.

And U.S. crude oil production for the week increased 1.7% to 12.10 million bpd, which is only -1.0 million bpd Feb-2020 record-high of 13.1 million bpd.

EIA Petroleum Stocks

(Million Barrels)	Current Week	Change	Week Ago	Year Ago	Difference
Crude Oil	837.0	0.4	836.6	1,044.5	-207.5
Commercial	440.8	3.9	436.8	435.1	5.7
SPR	396.2	-3.6	399.8	609.4	-213.2
Total Motor Gasoline	205.7	-0.9	206.6	212.7	-7.0
Conventional	14.4	-0.7	15.1	17.2	-2.8
Blending Components	191.3	-0.2	191.5	195.5	-4.2
Fuel Ethanol	22.2	-0.0	22.2	20.3	1.9
Kerosene-Type Jet Fuel	37.0	0.6	36.4	37.9	-0.9
Distillate Fuel Oil	106.3	-0.5	106.8	124.5	-18.2
15 ppm sulfur and under	95.9	0.1	95.8	112.5	-16.6
>15 ppm to 500 ppm sulfur	2.5	-0.4	2.9	3.4	-0.8
>500 ppm sulfur	7.8	-0.2	8.0	8.7	-0.8
Residual Fuel Oil	30.3	0.0	30.3	29.1	1.2
Propane/Propylene	87.7	-0.3	88.1	74.8	13.0
Other Oils	293.3	-3.5	296.9	298.3	-5.0
Unfinished Oils	84.6	1.1	83.5	94.4	-9.8

Stocks Summary

Million Barrels	Latest Data	Week Change	Last Week	Last Year	Diff To Last Year	5-Year Average	Diff To 5-Yr Average
Crude	440.8	3.9	436.8	435.1	5.7	454.8	-14.0
Gasoline	205.7	-0.9	206.6	212.7	-7.0	218.8	-13.1
Distillates	106.3	-0.5	106.8	124.5	-18.2	126.9	-20.6
Crude Runs (/day)	16.1	0.2	15.8	15.4	0.7	15.6	0.5
Refinery Utilization (%)	92.1	1.5	90.6	86.7	5.4	86.0	6.1

Stocks by PADD

	Crude Stocks	Week Chg	5 Year Average	Last Year	Gasoline Stocks	Week Chg	5 Year Average	Last Year	Distillate Stocks	Week Chg	5 Year Average	Last Year
PADD 1	8.4	0.7	11.4	8.6	49.1	-1.1	58.5	52.9	24.9	-0.5	45.3	39.4
PADD 2	111.5	-0.9	132.8	107.4	44.9	0.1	46.4	44.4	24.5	-0.3	26.1	29.1
PADD 3	247.4	1.4	237.3	247.5	77.6	-1.3	79.1	79.6	41.4	-0.7	41.1	41.2
PADD 4	23.9	0.7	23.0	23.5	6.9	0.4	7.1	7.6	3.3	-0.0	3.2	3.4
PADD 5	49.5	2.0	50.3	48.2	27.2	1.0	27.7	28.1	12.2	1.0	11.3	11.4
Total	440.8	3.9	454.8	435.1	205.7	-0.9	218.8	212.7	106.3	-0.5	126.9	124.5

	RBOB Stocks	Week Chg	5 Year Average	Last Year	Residual Stocks	Week Chg	5 Year Average	Last Year	Jet Stocks	Week Chg	5 Year Average	Last Year
PADD 1	19.6	0.3	13.5	17.0	5.6	-0.4	7.4	5.7	8.9	0.4	8.9	8.9
PADD 2	5.5	0.4	6.3	6.8	1.1	0.1	1.2	1.0	6.4	-0.2	7.0	7.2
PADD 3	11.8	0.1	8.0	11.6	19.1	-0.0	17.0	16.7	11.8	-0.4	13.3	11.7
PADD 4	0.0	0.0	0.0	0.0	0.2	-0.0	0.2	0.2	0.7	-0.0	0.7	0.9

	RBOB Stocks	Week Chg	5 Year Average	Last Year	Residual Stocks	Week Chg	5 Year Average	Last Year	Jet Stocks	Week Chg	5 Year Average	Last Year
PADD 5	11.5	-0.7	10.0	10.5	4.4	0.3	4.8	5.5	9.2	0.8	9.0	9.2
Total	48.5	0.2	37.8	45.9	30.3	0.0	30.6	29.1	37.0	0.6	38.9	37.9

Crude Runs

kbd	Latest Data	Last Week	Week Change	Last Year	Diff to Last Year	5 Year Average	Diff to 5 Year Average
PADD 1	804	775	-29	654	150	817	-13
PADD 2	3,824	3,894	70	3,787	37	3,561	263
PADD 3	8,619	8,735	116	8,391	228	8,378	241
PADD 4	588	554	-34	519	69	564	24
PADD 5	2,254	2,379	125	2,015	239	2,240	14
Total	16,089	16,336	247	15,366	723	15,560	529

Refinery Runs

kbd	Latest Data	Last Week	Week Change	Last Year	Diff to Last Year	5 Year Average	Diff to 5 Year Average
PADD 1	825	807	-18	655	170	834	-9
PADD 2	3,831	3,902	71	3,786	45	3,565	266
PADD 3	8,913	9,038	125	8,618	295	8,607	306
PADD 4	587	551	-36	518	69	564	23
PADD 5	2,396	2,539	143	2,138	258	2,380	16
Total	16,551	16,836	285	15,715	836	15,950	601

Total Crude Stocks

Week Ending: November 4, 2022

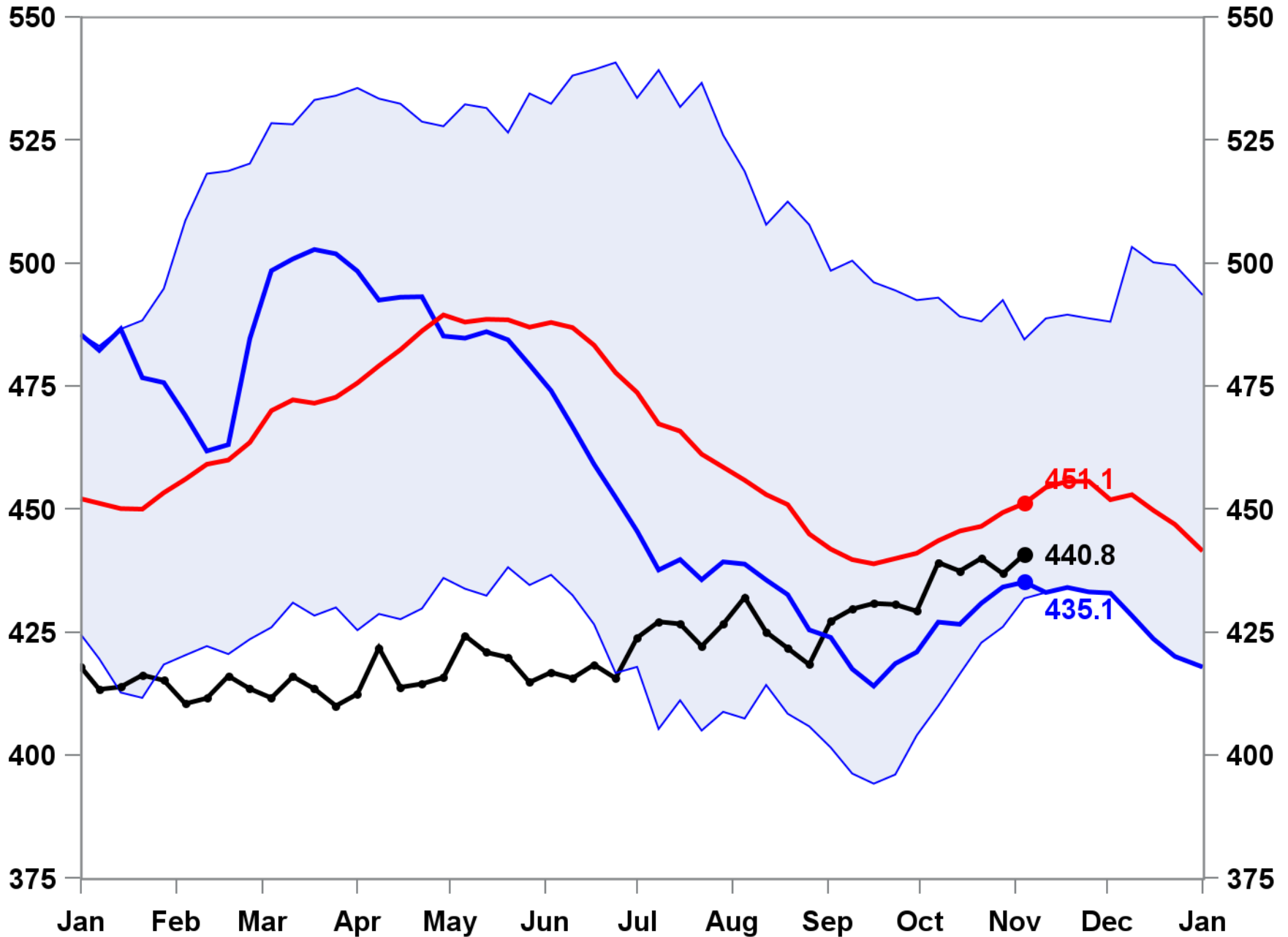
440.8 MMBBL

Week Change: 3.9 MMBBL

Last Year: 435.1

Five Year Average: 451.1

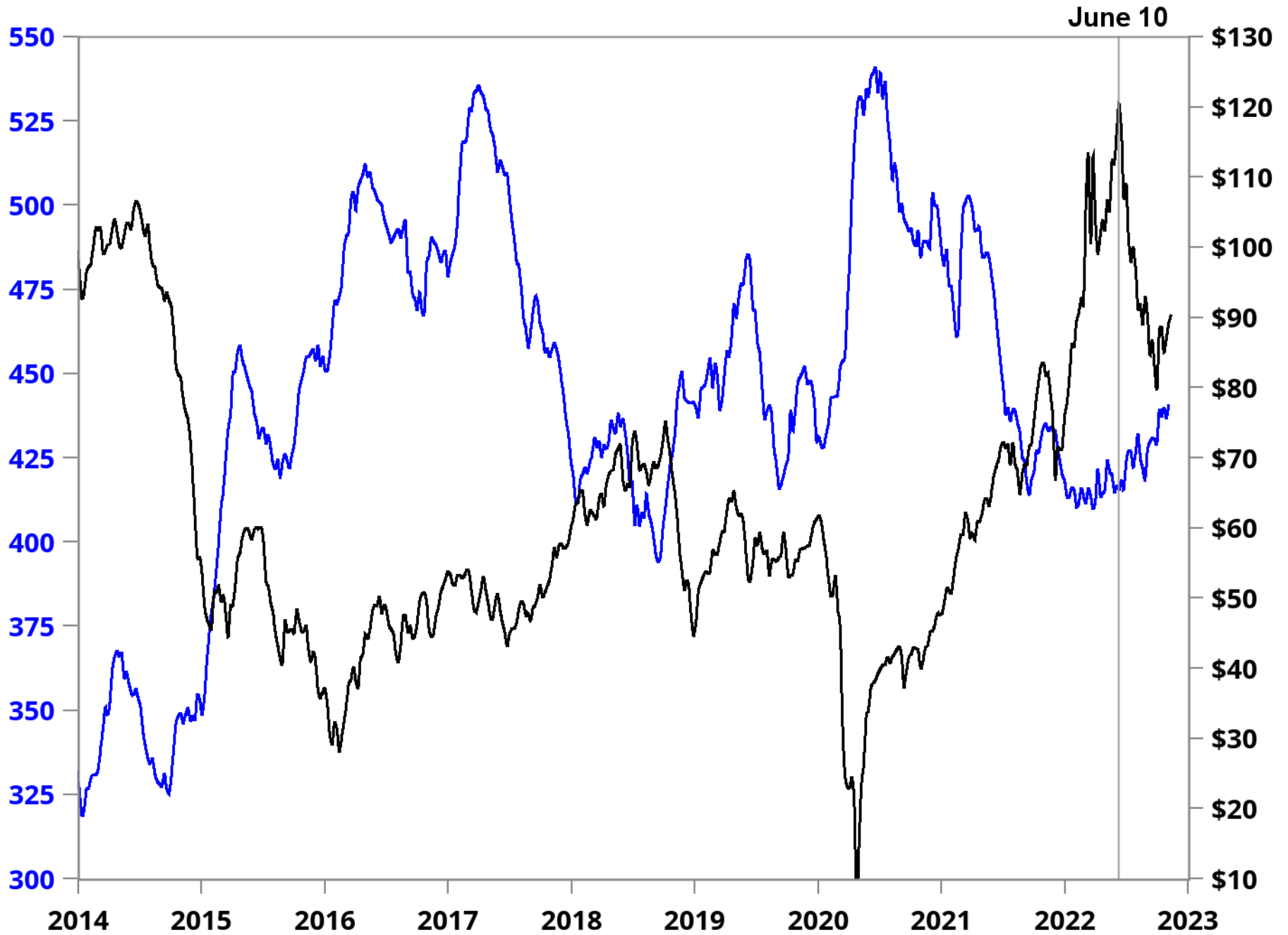
Delta to Last Year: 5.7



Total Crude Stocks and WTI Crude Prices

Crude Stocks

WTI Crude

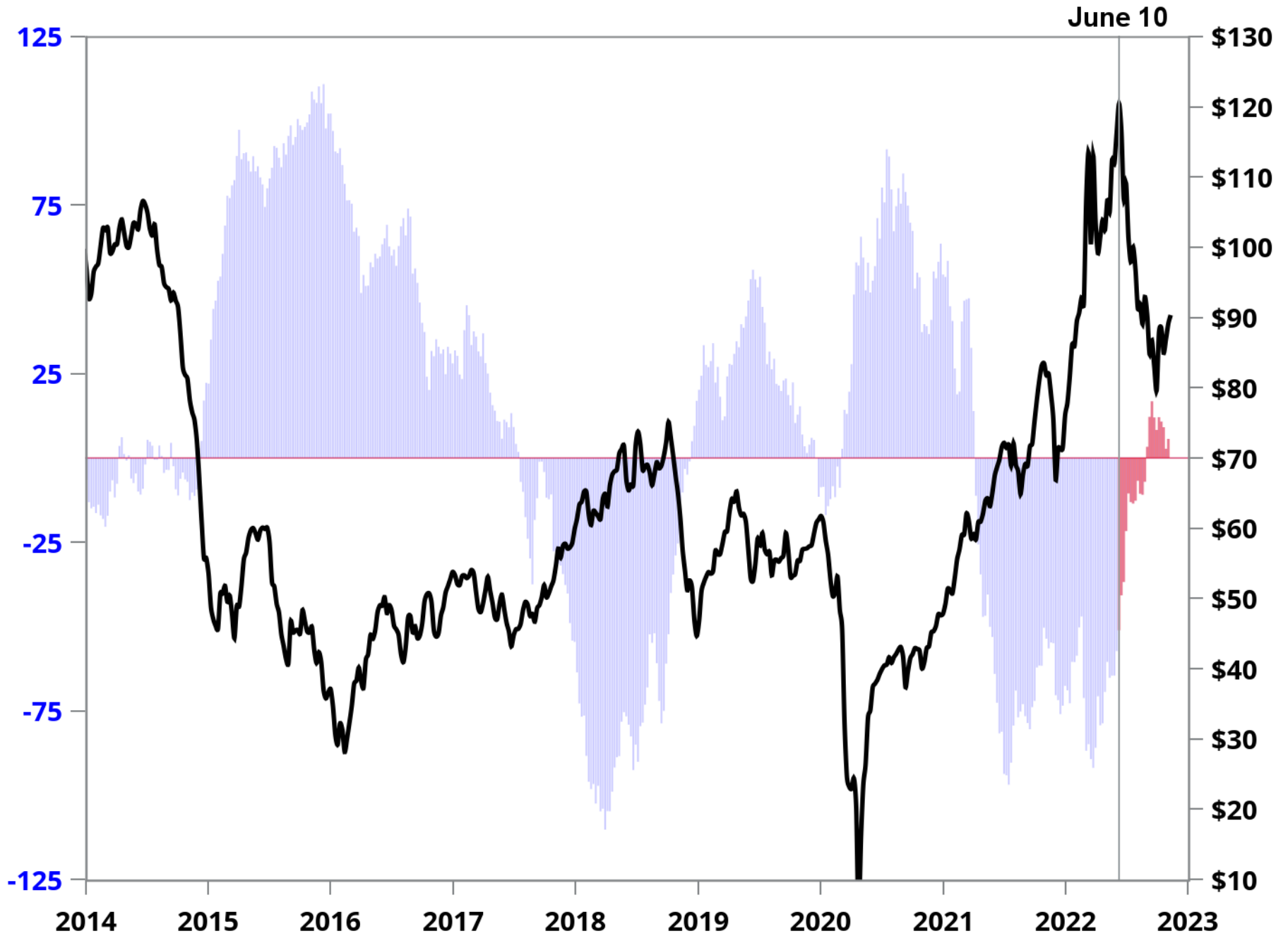


June 10

Total Crude Stocks Annual Delta and WTI Crude Prices

Crude Stocks Delta

WTI Crude



Cushing Crude Stocks

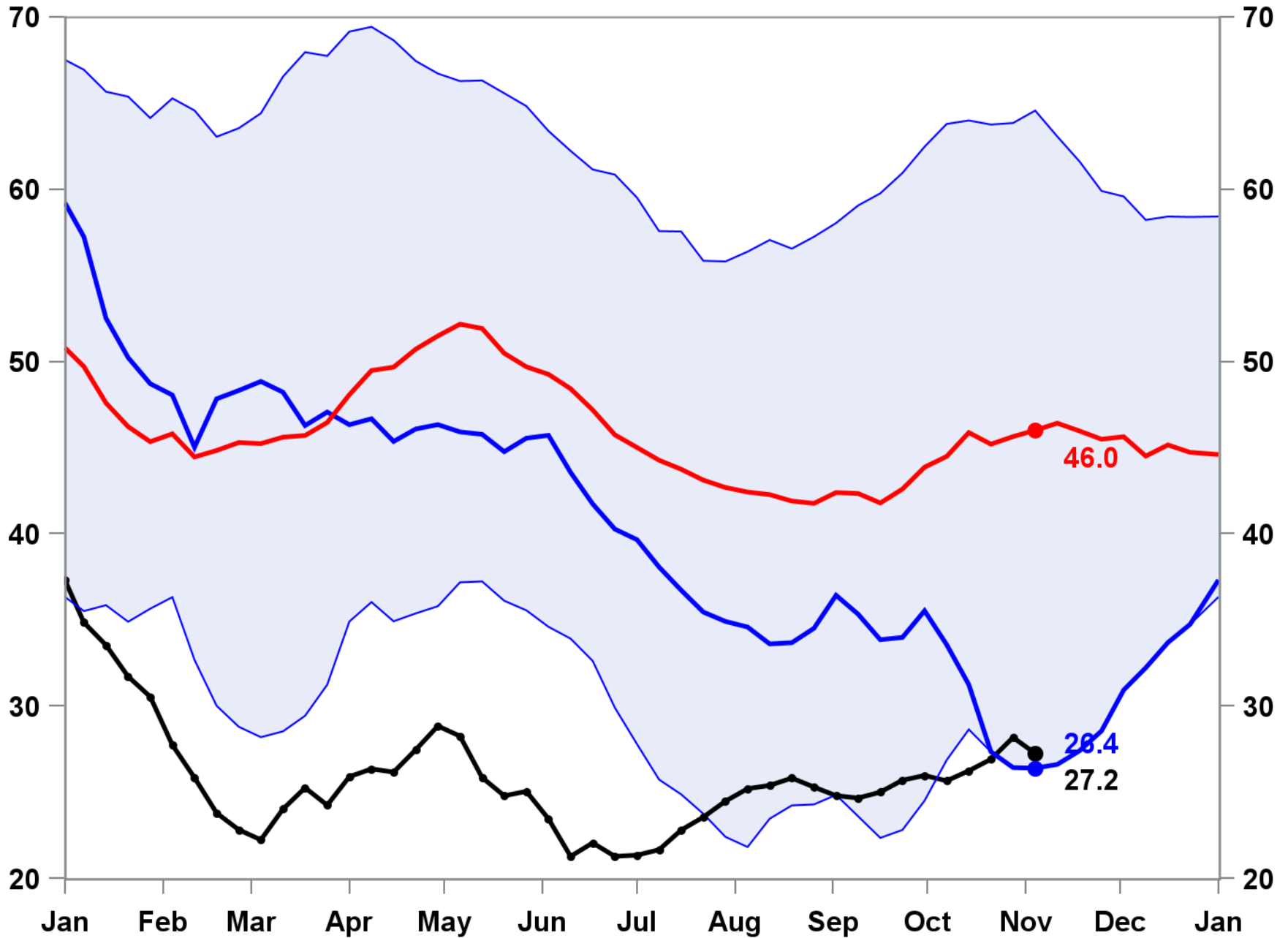
Week Ending: November 4, 2022

27.2 MMBBL

Week Change: -0.9 MMBBL

Last Year: 26.4

Five Year Average: 46.0



PADD 2 Crude Stocks

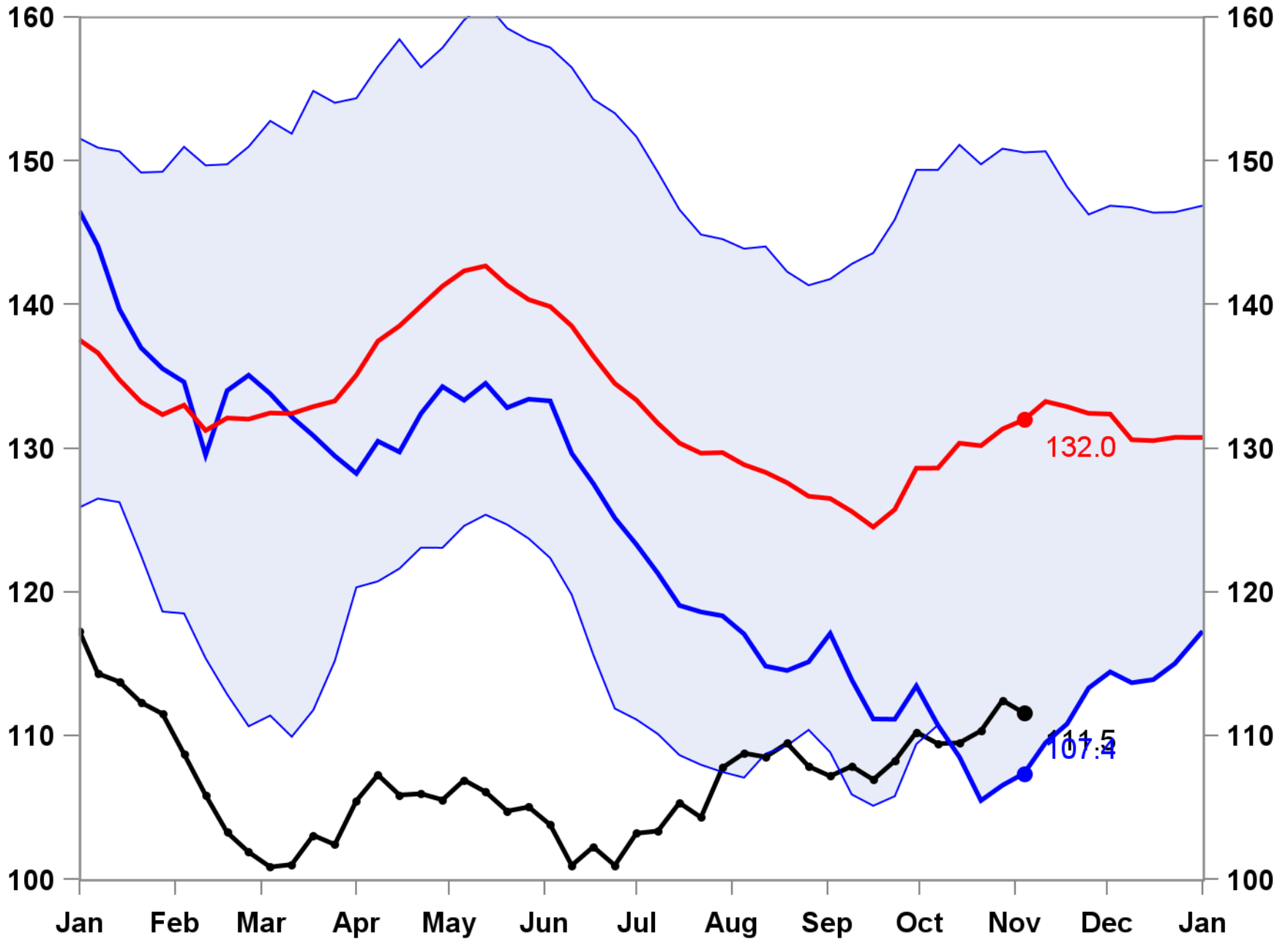
Week Ending: November 4, 2022

111.5 MMBBL

Week Change: -0.9 MMBBL

Last Year: 107.4

Five Year Average: 132.0



PADD 3 Crude Stocks

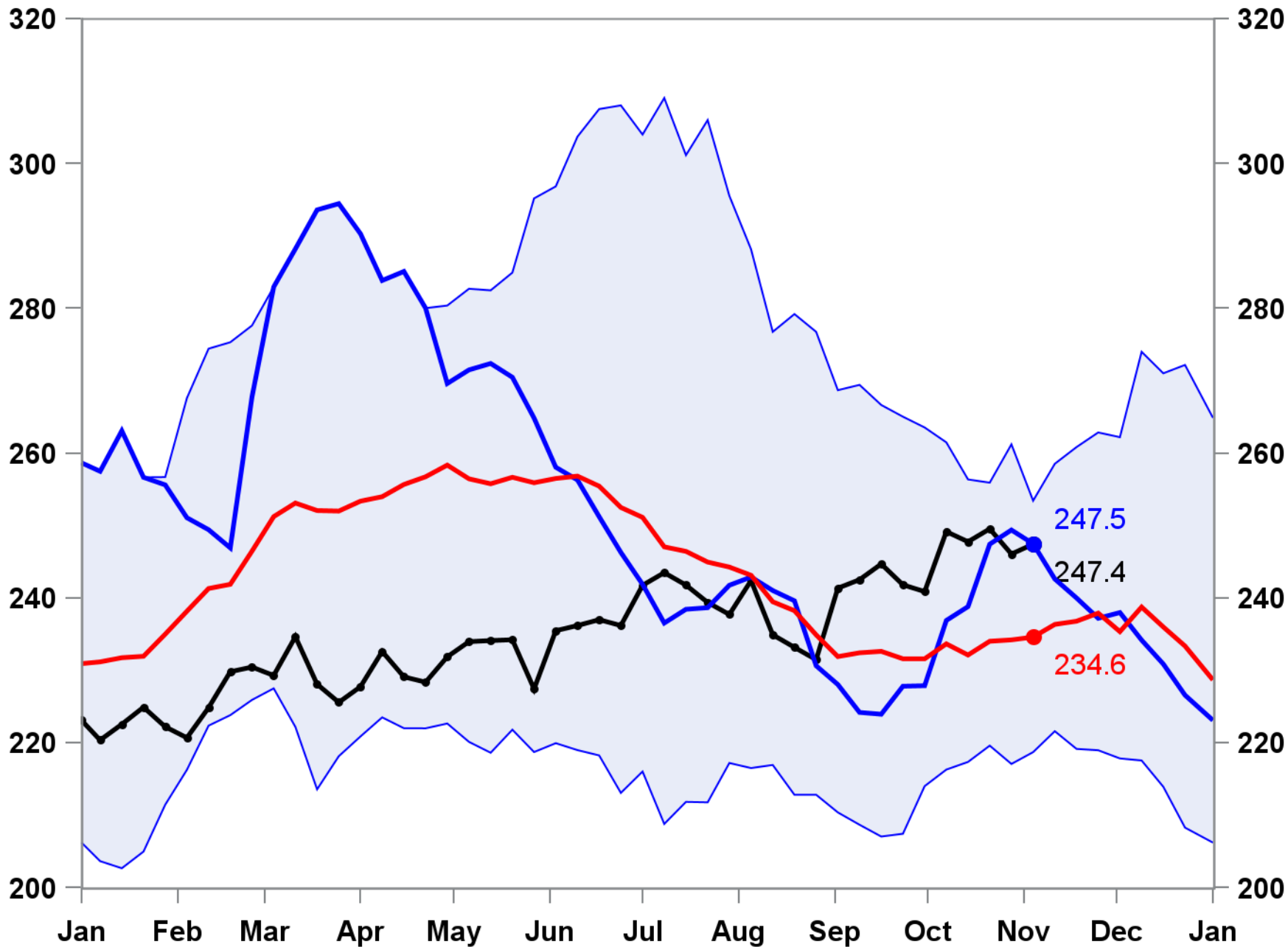
Week Ending: November 4, 2022

247.4 MMBBL

Week Change: 1.4 MMBBL

Last Year: 247.5

Five Year Average: 234.6

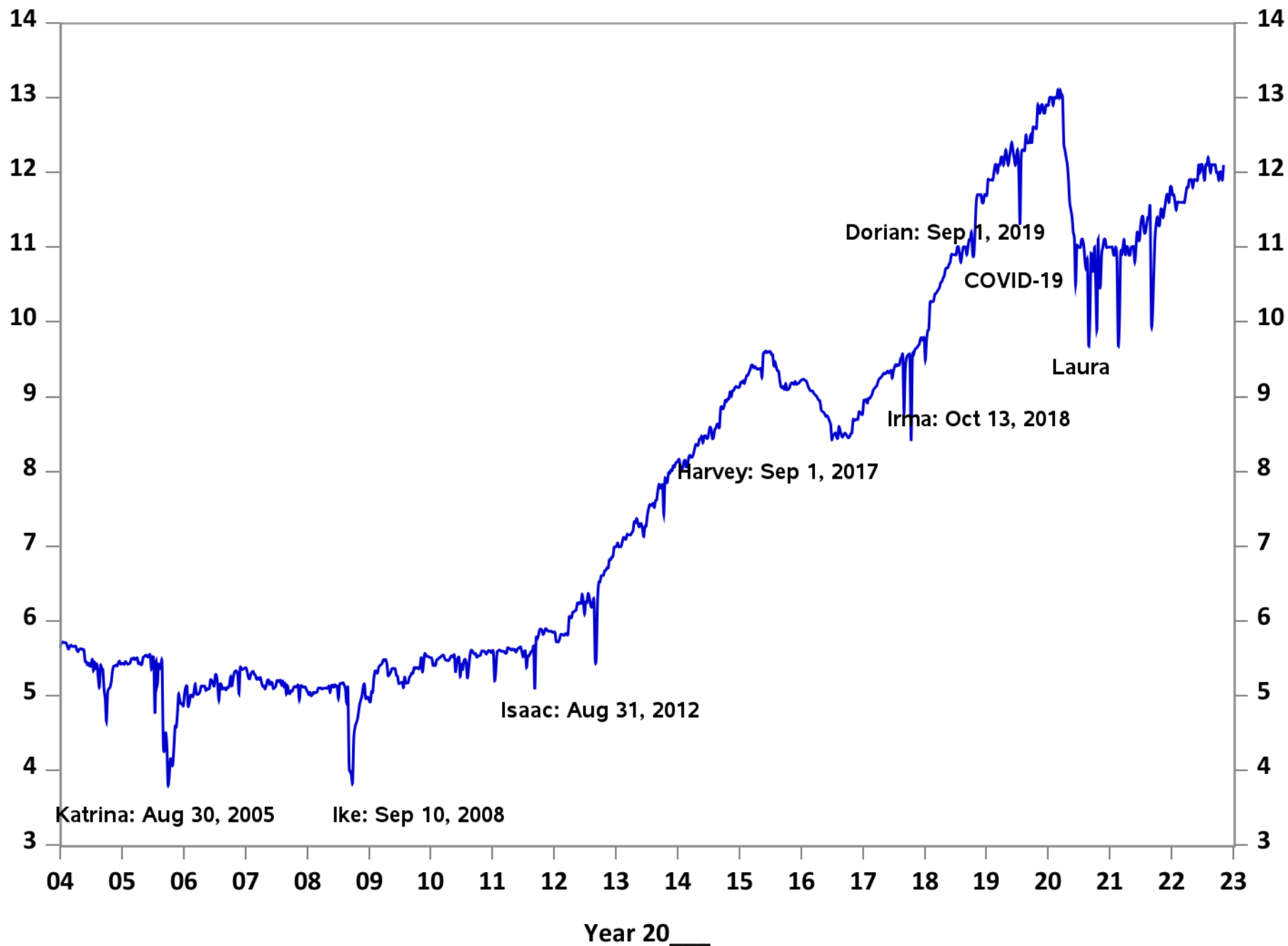


Total Crude Oil Production

Week Ending: November 4, 2022

12.1 MMBBL

Week Change: 0.2 MMBBL



Total Crude Days Forward Supply

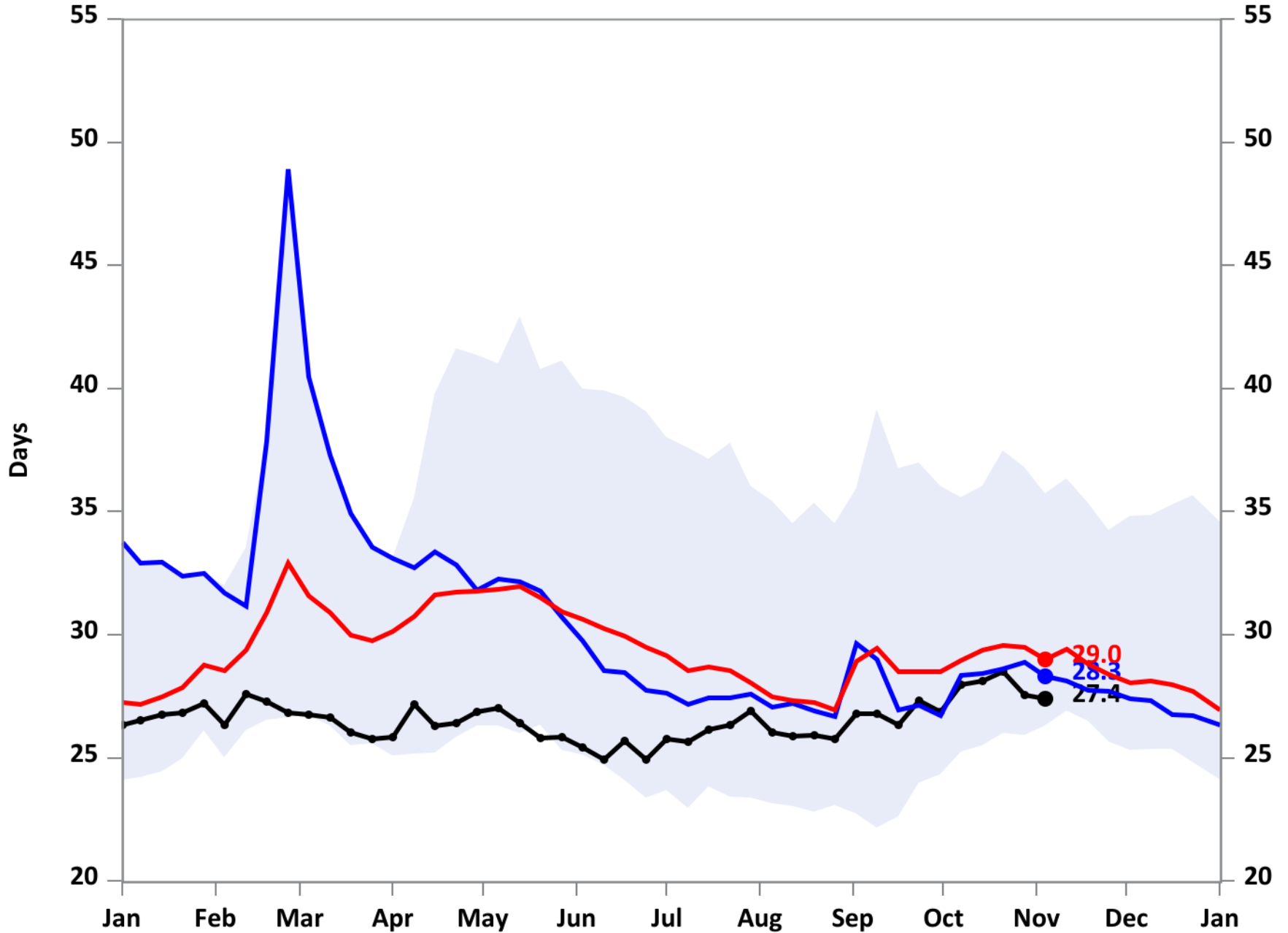
Week Ending: November 4, 2022

27.4 Days

Week Change: -0.2

Last Year: 28.3

Five Year Average: 29.0



Total Petroleum Stocks

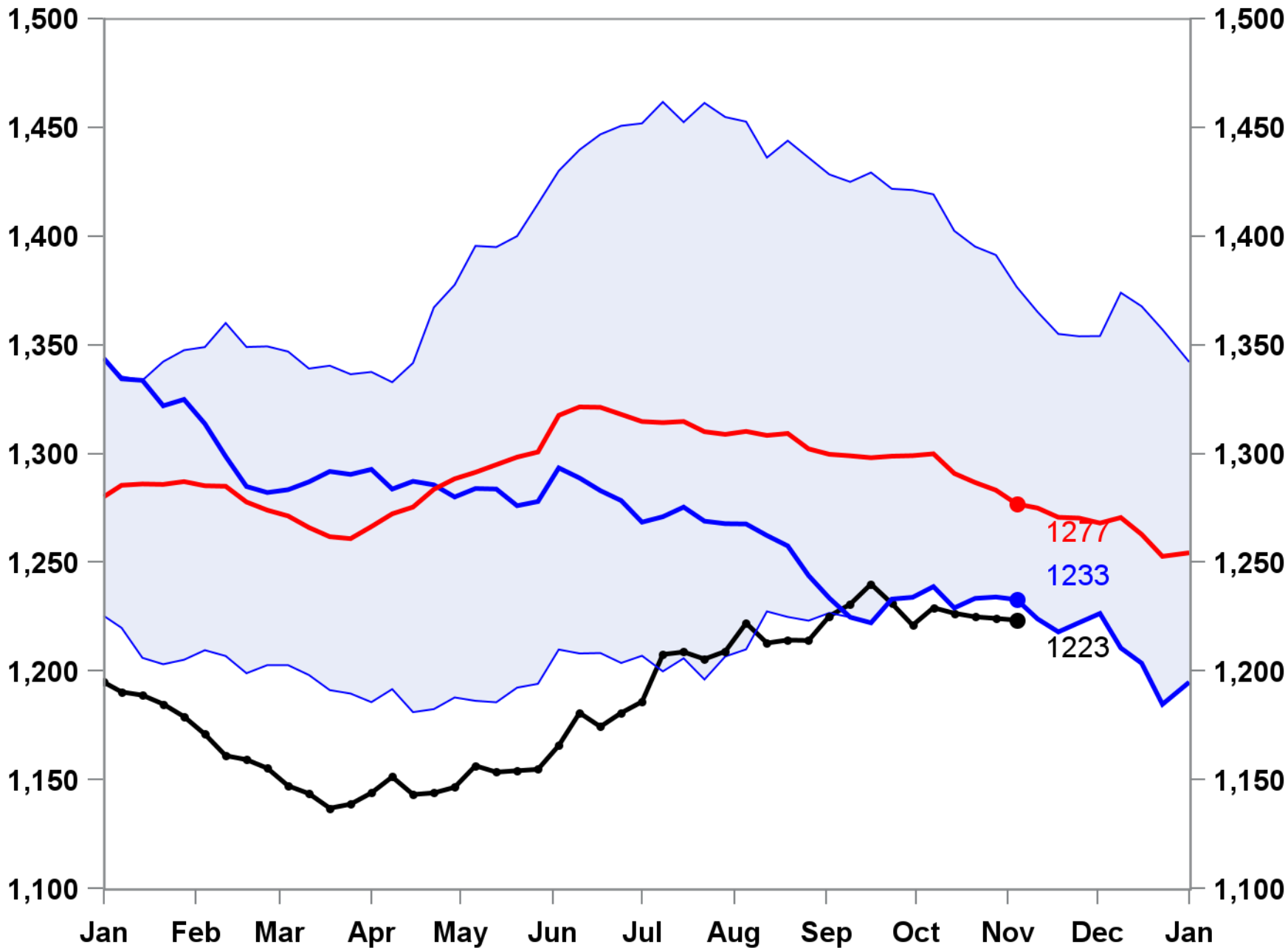
Week Ending: November 4, 2022

1,223 MMBBL

Week Change: -0.8 MMBBL

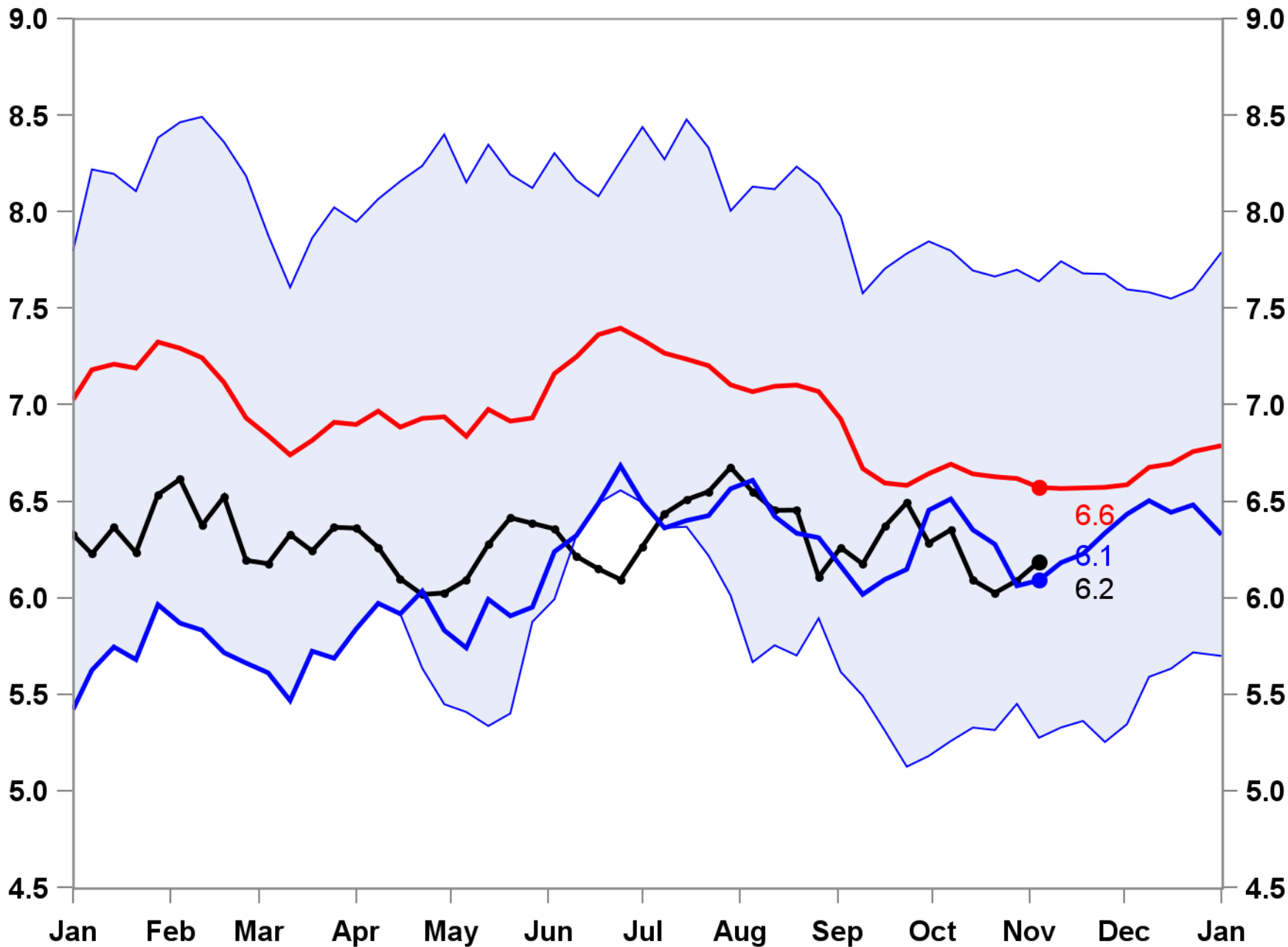
Last Year: 1,233

Five Year Average: 1276.7



5-Year Average

2021 Data



November 4, 2022

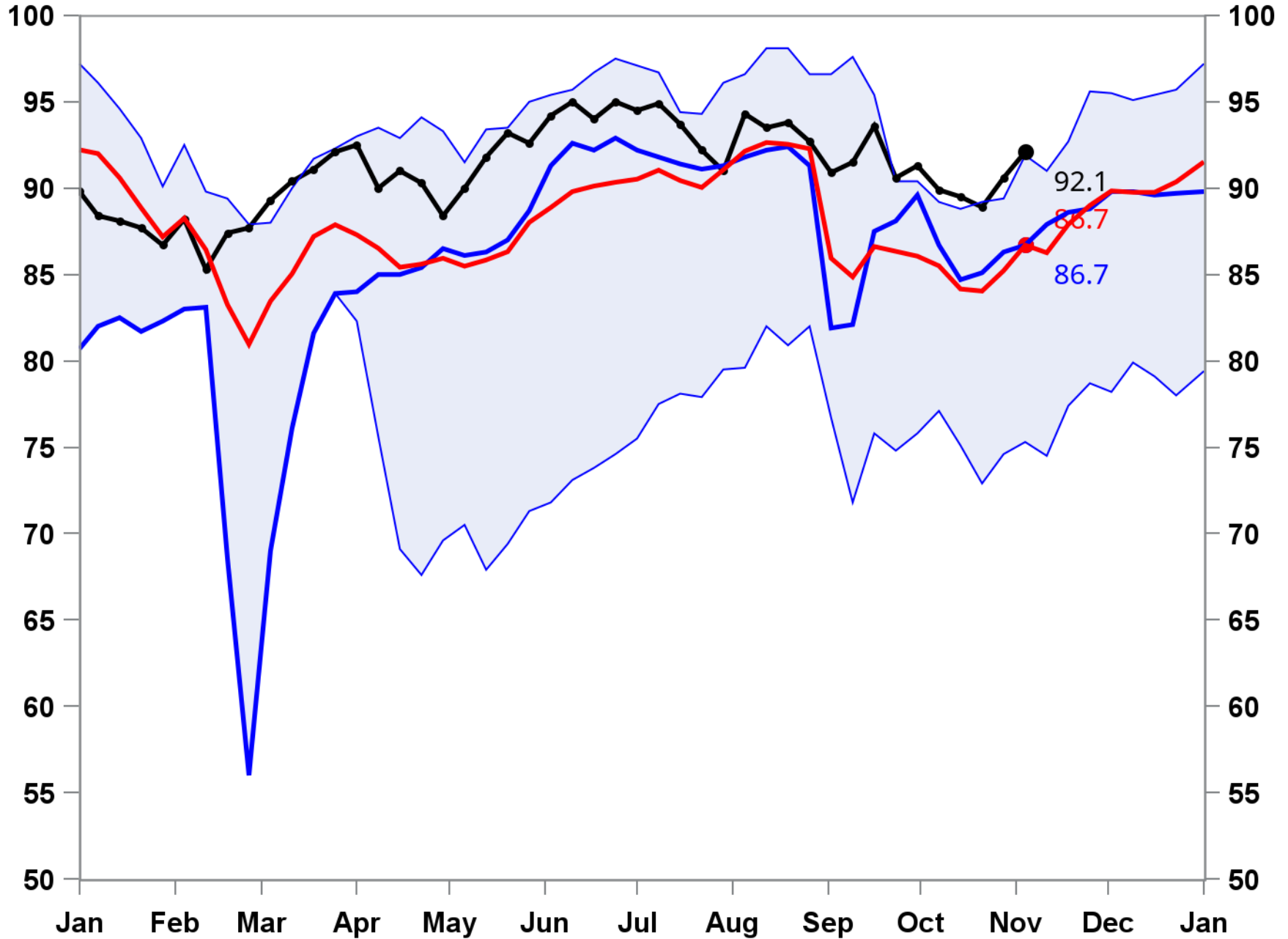
Refinery Utilization

92.10 %

1.50 Week Change

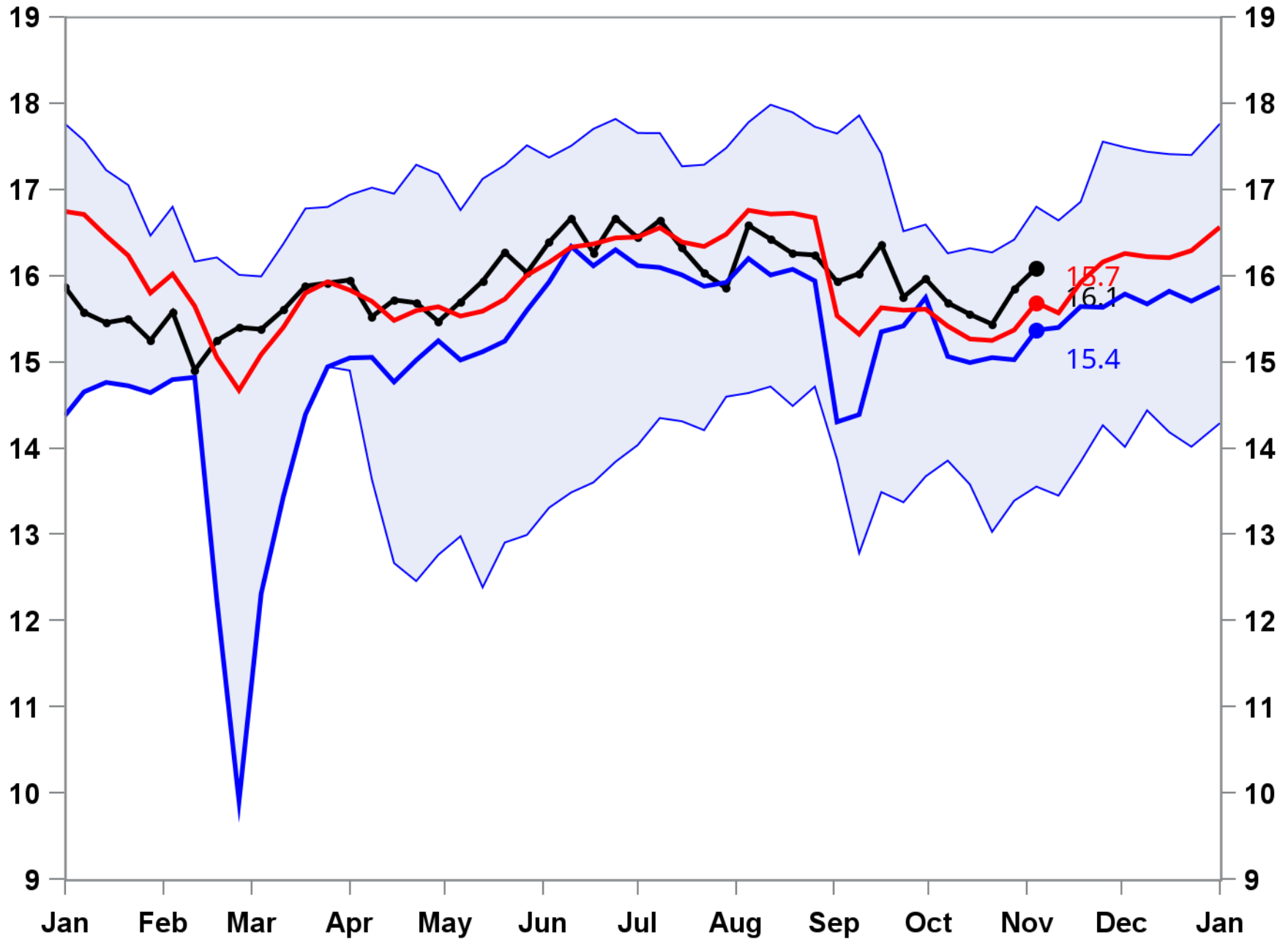
5-Year Average

2021 Data



5-Year Average

2021 Data

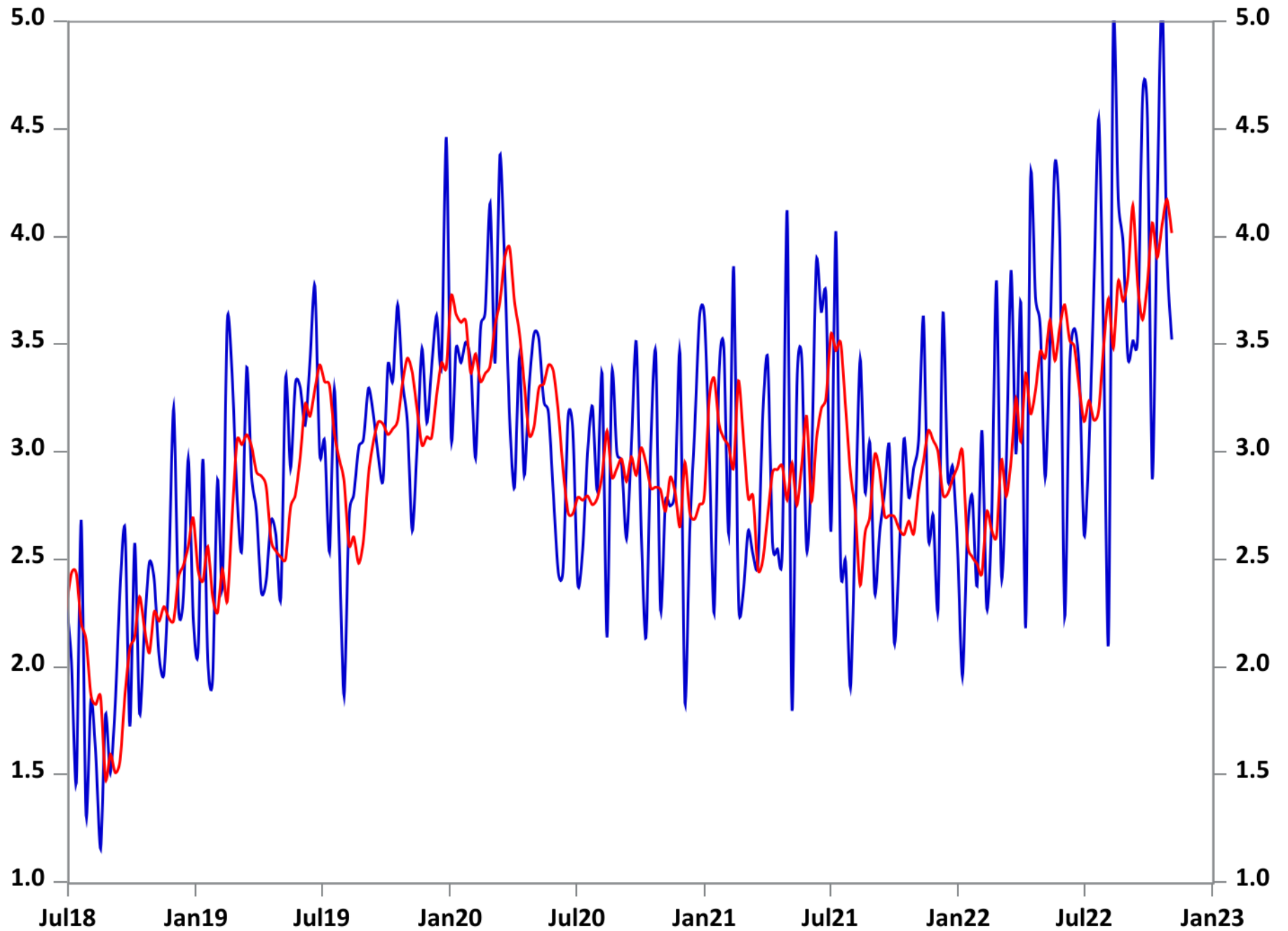


Total Crude Oil Exports with Quarterly Averages

Week Ending: November 4, 2022

3.5 MMBBL

Week Change: -404 MMBBL



2022 Year to Date Data

	MoGas Stocks	MoGas Production	MoGas Demand	Days Forward Supply	PADD 1 MoGas Stocks	PADD 1 MoGas Production	PADD 1 MoGas Demand	PADD 1 Days Forward Supply
07JAN	240.7	8.6	.	.	63.9	8.6	.	.
14JAN	246.6	8.7	8.2	29.9	64.5	8.7	3.1	20.9
21JAN	247.9	8.9	9.0	27.4	64.4	8.9	3.1	20.9
28JAN	250.0	8.7	8.8	28.5	65.8	8.7	3.1	21.1
04FEB	248.4	9.4	10.1	24.5	63.0	9.4	3.6	17.4
11FEB	247.1	8.8	9.6	25.8	63.1	8.8	3.4	18.3
18FEB	246.5	9.3	9.8	25.2	62.2	9.3	3.6	17.5
25FEB	246.0	9.3	9.9	24.7	60.8	9.3	3.7	16.5
04MAR	244.6	9.6	10.5	23.2	60.6	9.6	3.7	16.3
11MAR	241.0	9.4	10.4	23.1	60.7	9.4	3.5	17.3
18MAR	238.0	9.8	10.9	21.7	57.2	9.8	4.0	14.3
25MAR	238.8	9.1	9.6	24.9	57.7	9.1	3.4	16.7
01APR	236.8	9.1	9.9	23.9	56.4	9.1	3.6	15.5
08APR	233.1	9.5	10.5	22.3	55.5	9.5	3.6	15.5
15APR	232.4	9.8	10.5	22.0	53.8	9.8	3.7	14.4
22APR	230.8	9.5	10.6	21.8	50.7	9.5	4.2	12.2
29APR	228.6	9.7	11.1	20.5	52.3	9.7	3.8	13.9
06MAY	225.0	9.7	10.9	20.6	51.8	9.7	3.9	13.3
13MAY	220.2	9.6	11.1	19.8	51.4	9.6	3.8	13.7

2022 Year to Date Data

	MoGas Stocks	MoGas Production	MoGas Demand	Days Forward Supply	PADD 1 MoGas Stocks	PADD 1 MoGas Production	PADD 1 MoGas Demand	PADD 1 Days Forward Supply
20MAY	219.7	9.4	10.3	21.3	52.1	9.4	3.8	13.6
27MAY	219.0	10.0	11.0	20.0	51.3	10.0	4.1	12.4
03JUN	218.2	10.0	11.3	19.3	53.2	10.0	4.0	13.4
10JUN	221.6	9.5	9.8	22.5	53.4	9.5	3.8	14.1
17JUN	219.0	9.4	10.5	20.8	52.3	9.4	4.0	13.1
24JUN	221.6	9.5	9.9	22.3	53.4	9.5	3.7	14.6
01JUL	219.1	10.3	11.6	18.8	52.5	10.3	4.1	12.9
08JUL	224.9	8.9	8.8	25.5	55.2	8.9	3.4	16.3
15JUL	228.4	9.4	9.7	23.5	54.7	9.4	3.8	14.5
22JUL	225.1	9.7	10.7	21.0	52.7	9.7	4.0	13.2
29JUL	225.3	9.3	9.9	22.8	51.7	9.3	3.9	13.4
05AUG	220.3	10.2	11.5	19.2	50.7	10.2	3.9	12.9
12AUG	215.7	10.0	11.3	19.0	50.9	10.0	4.0	12.8
19AUG	215.6	9.4	10.0	21.5	53.6	9.4	3.4	15.9
26AUG	214.5	9.8	10.5	20.4	51.9	9.8	4.0	13.1
02SEP	214.8	9.9	10.8	19.8	53.4	9.9	3.9	13.7
09SEP	213.0	9.5	10.2	20.8	56.0	9.5	3.2	17.3
16SEP	214.6	9.5	10.0	21.4	56.4	9.5	3.6	15.6
23SEP	212.2	9.6	10.5	20.2	55.2	9.6	3.8	14.3

2022 Year to Date Data

	MoGas Stocks	MoGas Production	MoGas Demand	Days Forward Supply	PADD 1 MoGas Stocks	PADD 1 MoGas Production	PADD 1 MoGas Demand	PADD 1 Days Forward Supply
30SEP	207.5	10.0	11.2	18.6	54.2	10.0	3.7	14.6
07OCT	209.5	9.2	9.6	21.9	54.6	9.2	3.6	15.2
14OCT	209.4	9.4	9.9	21.2	54.2	9.4	3.6	15.1
21OCT	207.9	9.4	10.3	20.2	51.1	9.4	4.1	12.4
28OCT	206.6	9.5	9.9	20.8	50.2	9.5	3.6	14.0
04NOV	205.7	9.8	10.4	19.8	49.1	9.8	3.7	13.2

Total Gasoline Stocks

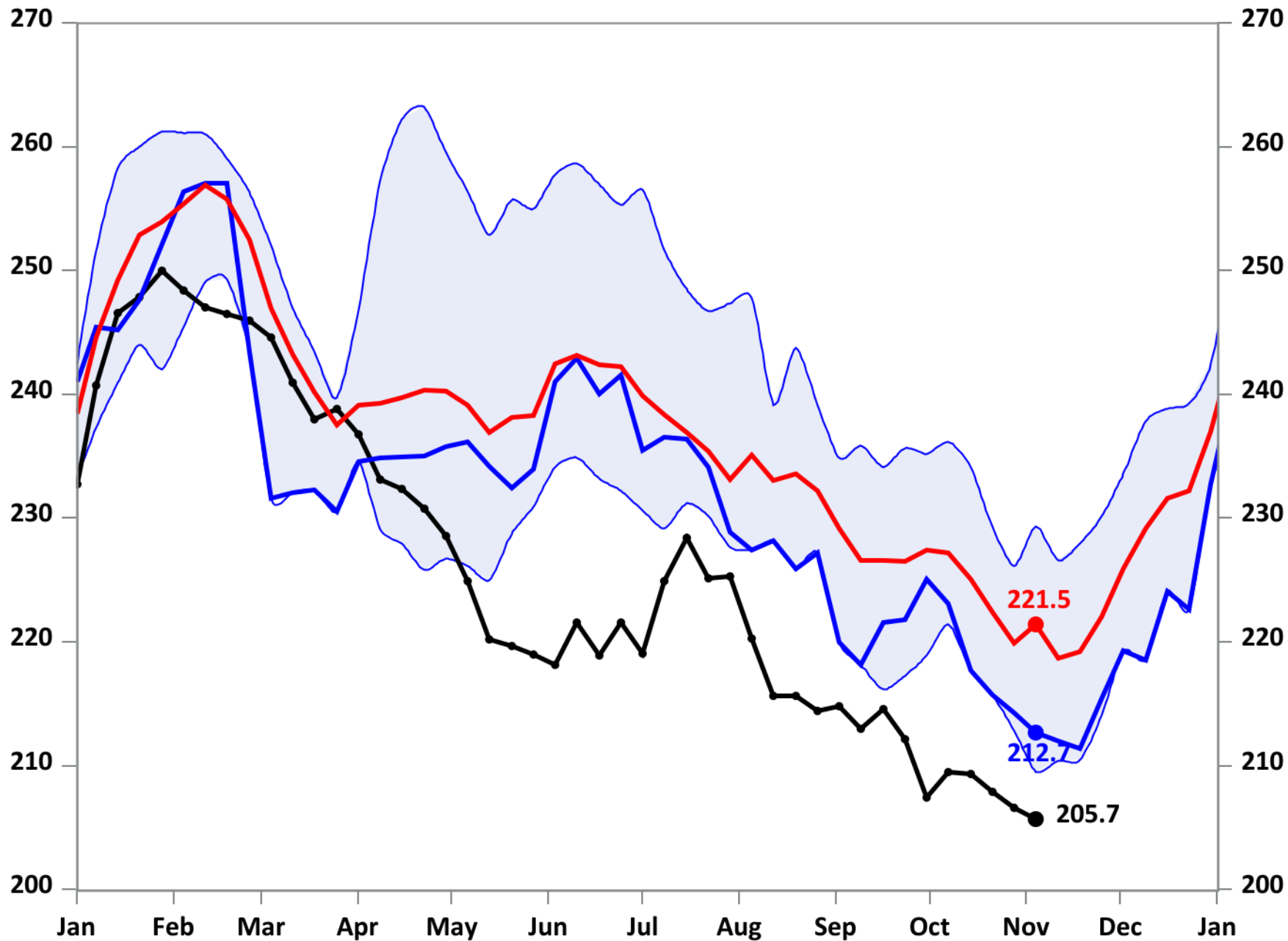
Week Ending: November 4, 2022

205.7 MMBBL

Week Change: -0.9 MMBBL

Last Year: 212.7

Five Year Average: 221.5



Total Gasoline Production (4-Week Moving Average Smoothing)

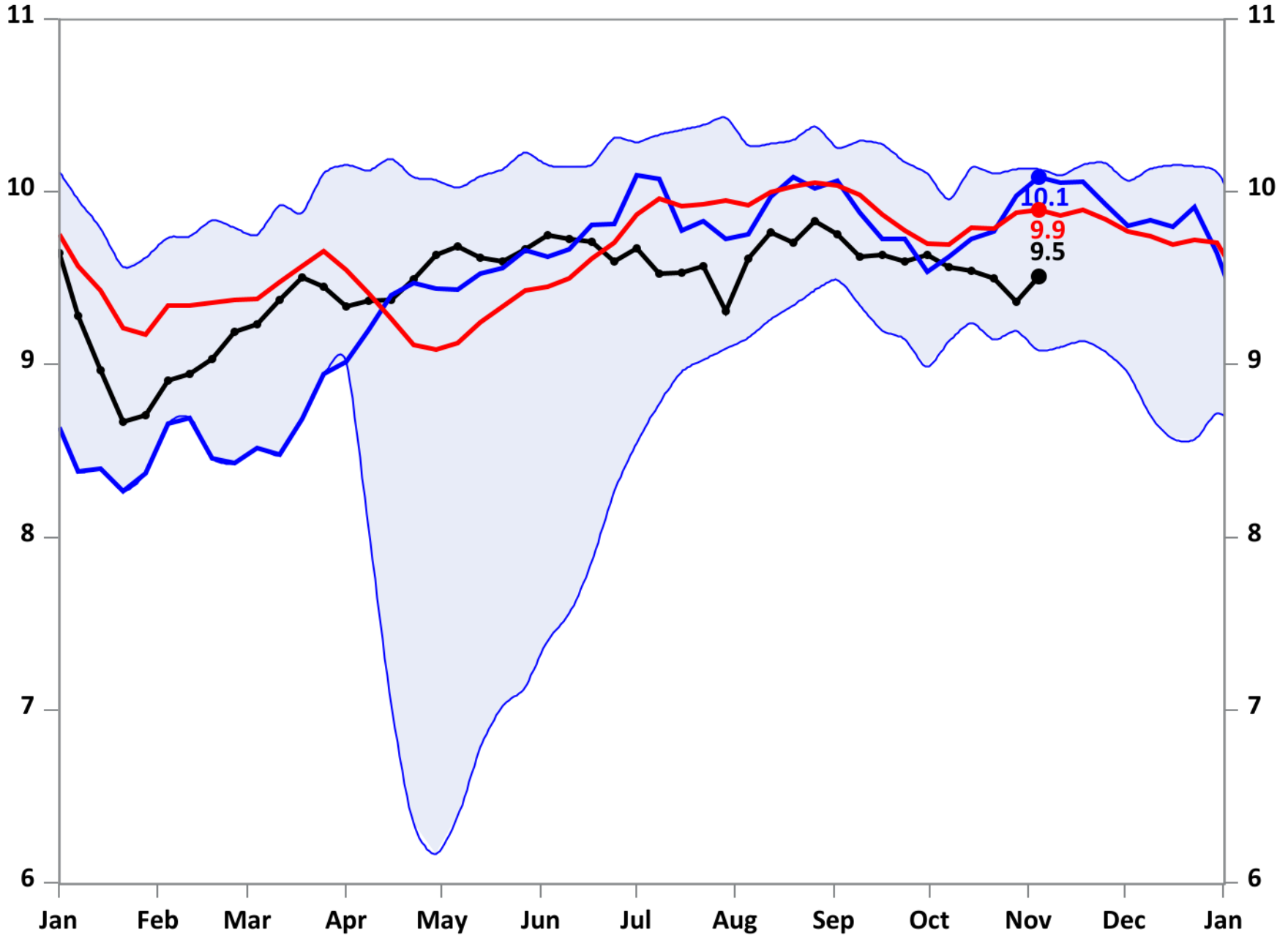
Week Ending: November 4, 2022

9.5 MMBBL/day

Week Change: 0.1 MMBBL

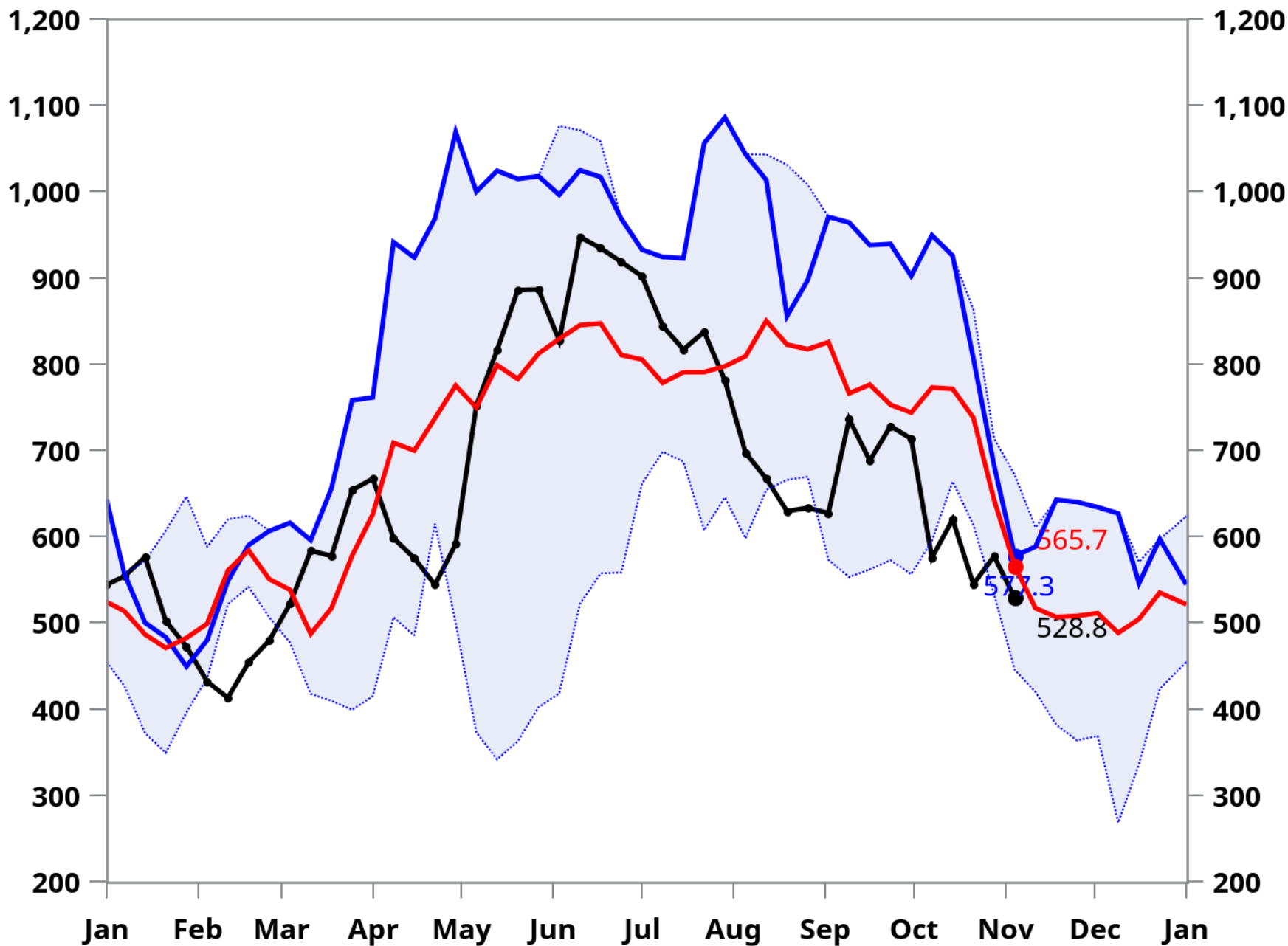
Last Year: 10.1

Five Year Average: 9.9



5-Year Average

2021 Data



Gasoline Demand (Smoothed with 4-Week Moving Average)

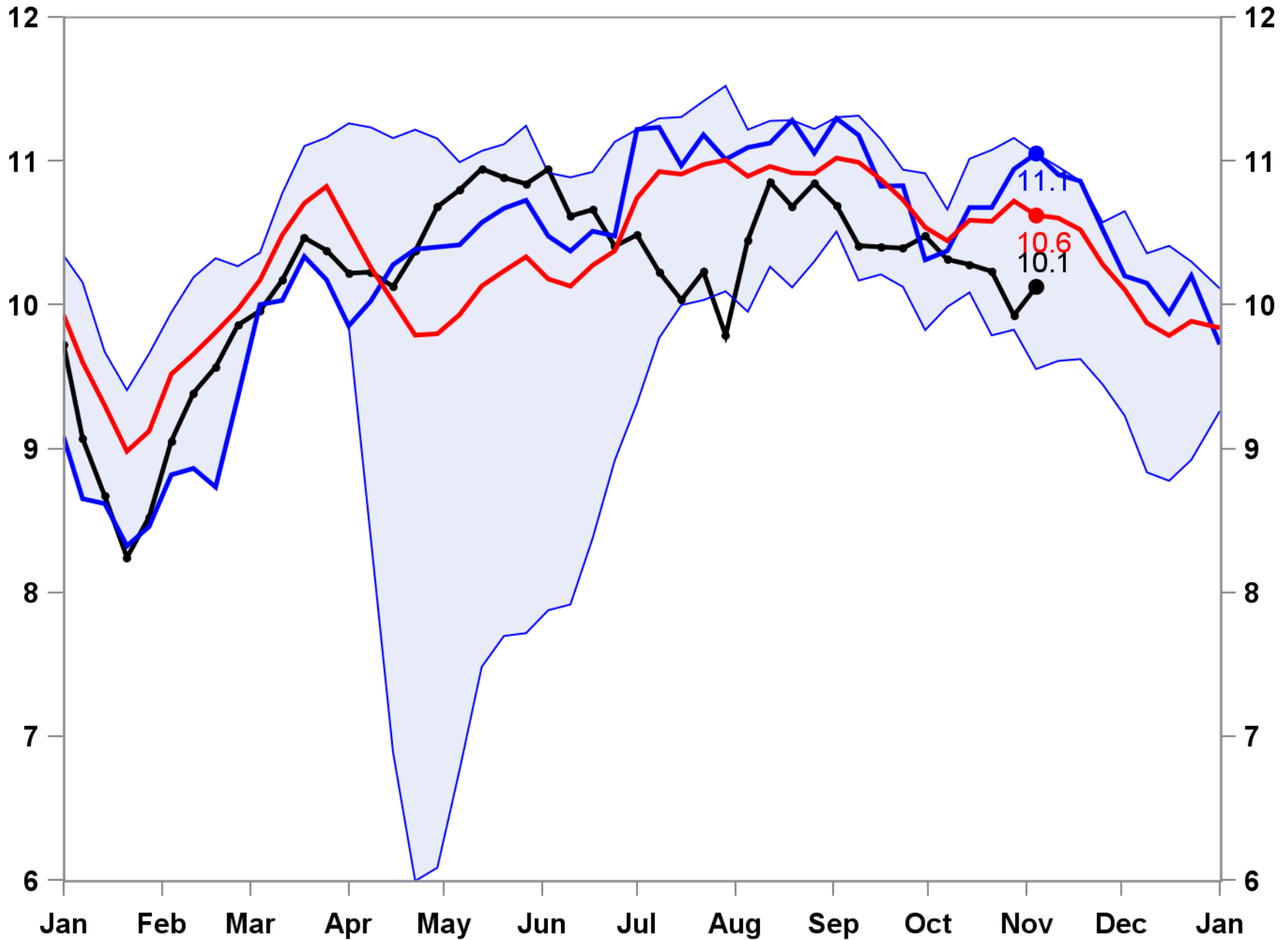
Week Ending: November 4, 2022

10.1 MMBBL/day

Week Change: 0.20 MMBBL

Last Year: 11.1

Five Year Average: 10.6



Gasoline Days Forward Supply (Smoothed with 4-Week Moving Average)

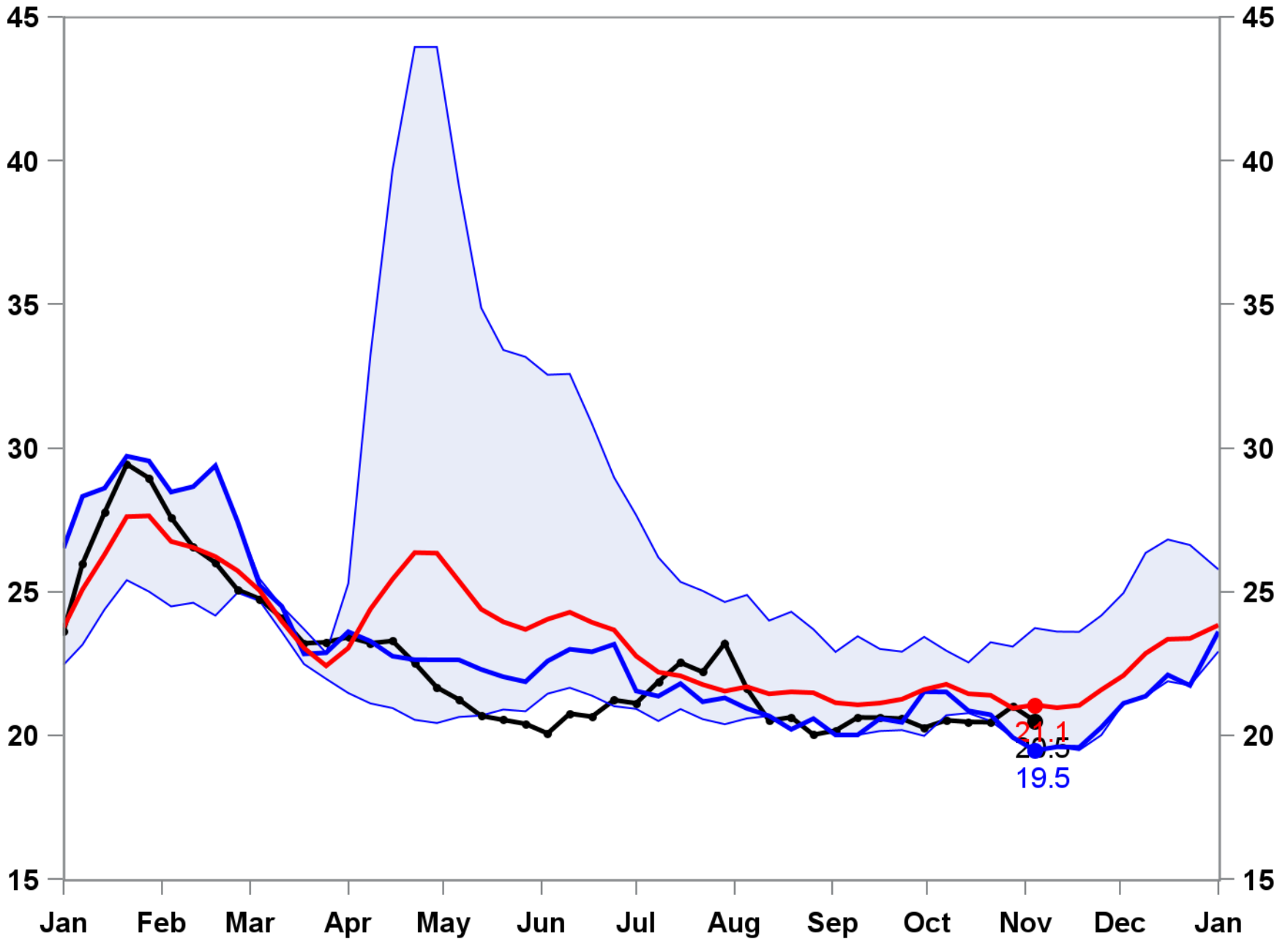
Week Ending: November 4, 2022

20.5 Days

Week Change: -0.51

Last Year: 19.5

Five Year Average: 21.1



PADD 1 Gasoline Stocks

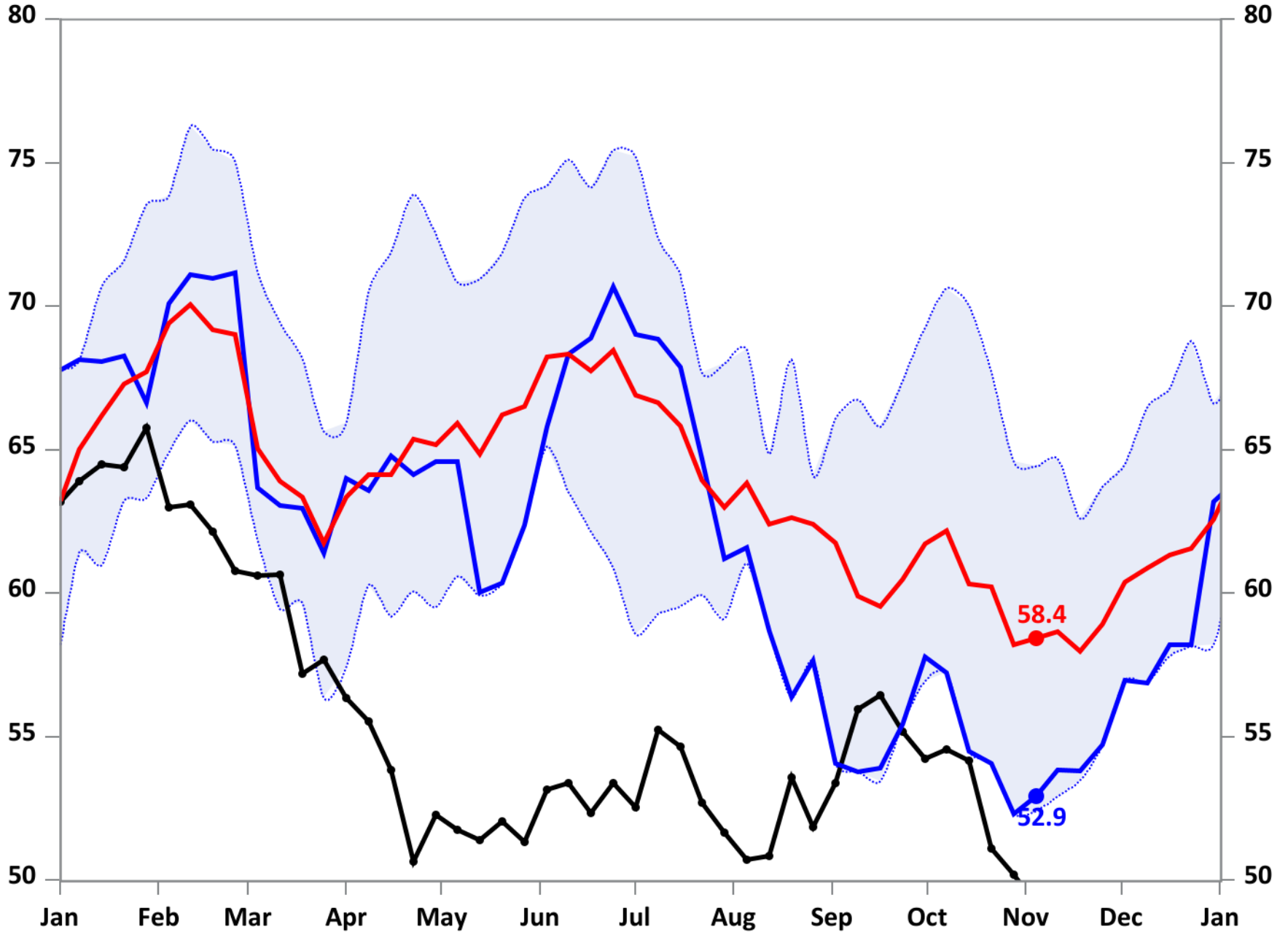
Week Ending: Nov 4, 2022

49.1 MMBBL

Week Change: -1.1 MMBBL

Last Year: 52.9

Five Year Average: 58.4



PADD 1 Gasoline Production (4-Week Moving Average Smoothing)

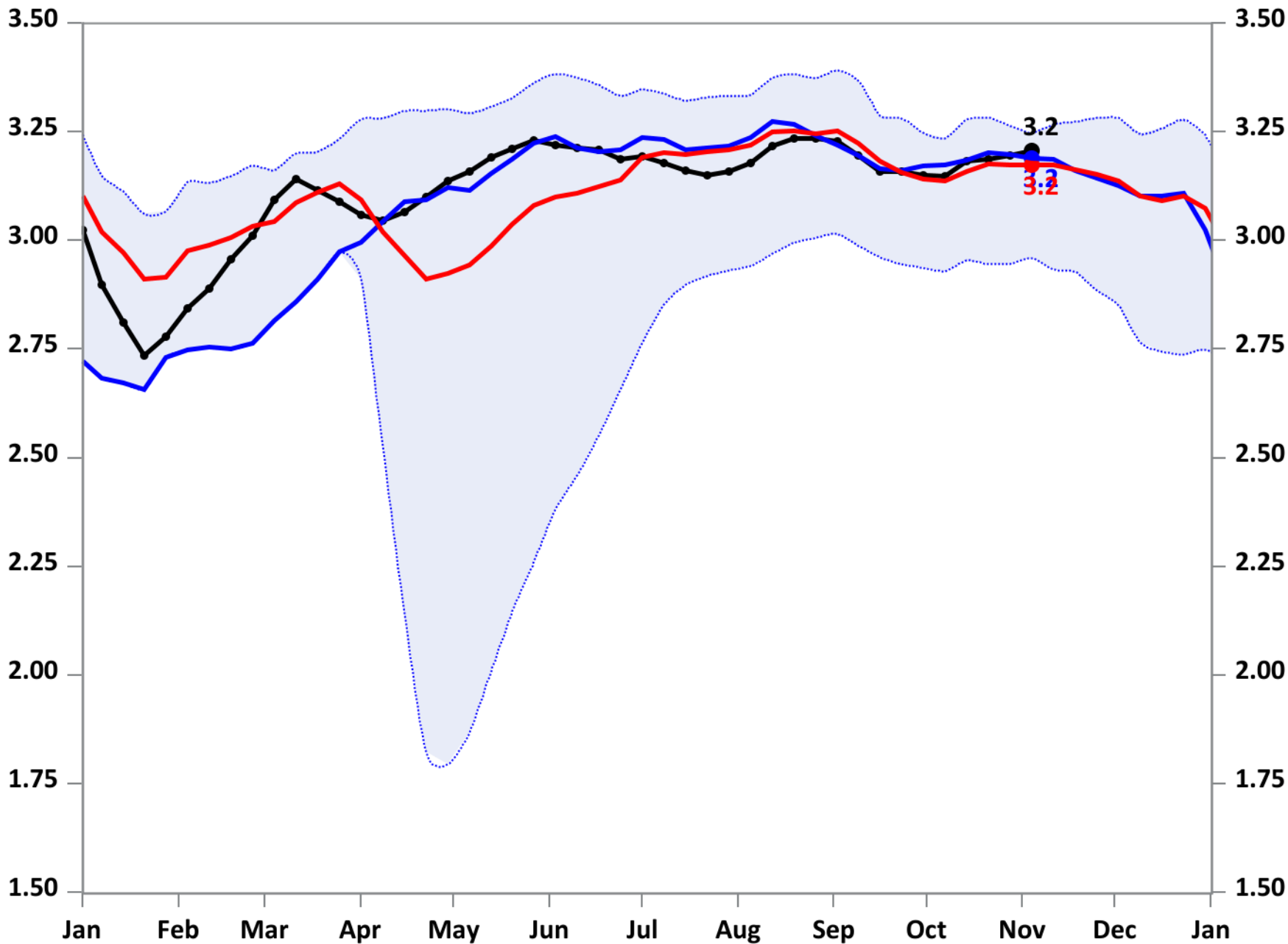
Week Ending: Nov 4, 2022

3.2 MMBBL/day

Week Change: 0.0 MMBBL

Last Year: 3.2

Five Year Average: 3.2



PADD 1 Gasoline Demand (Smoothed with 4-Week Moving Average)

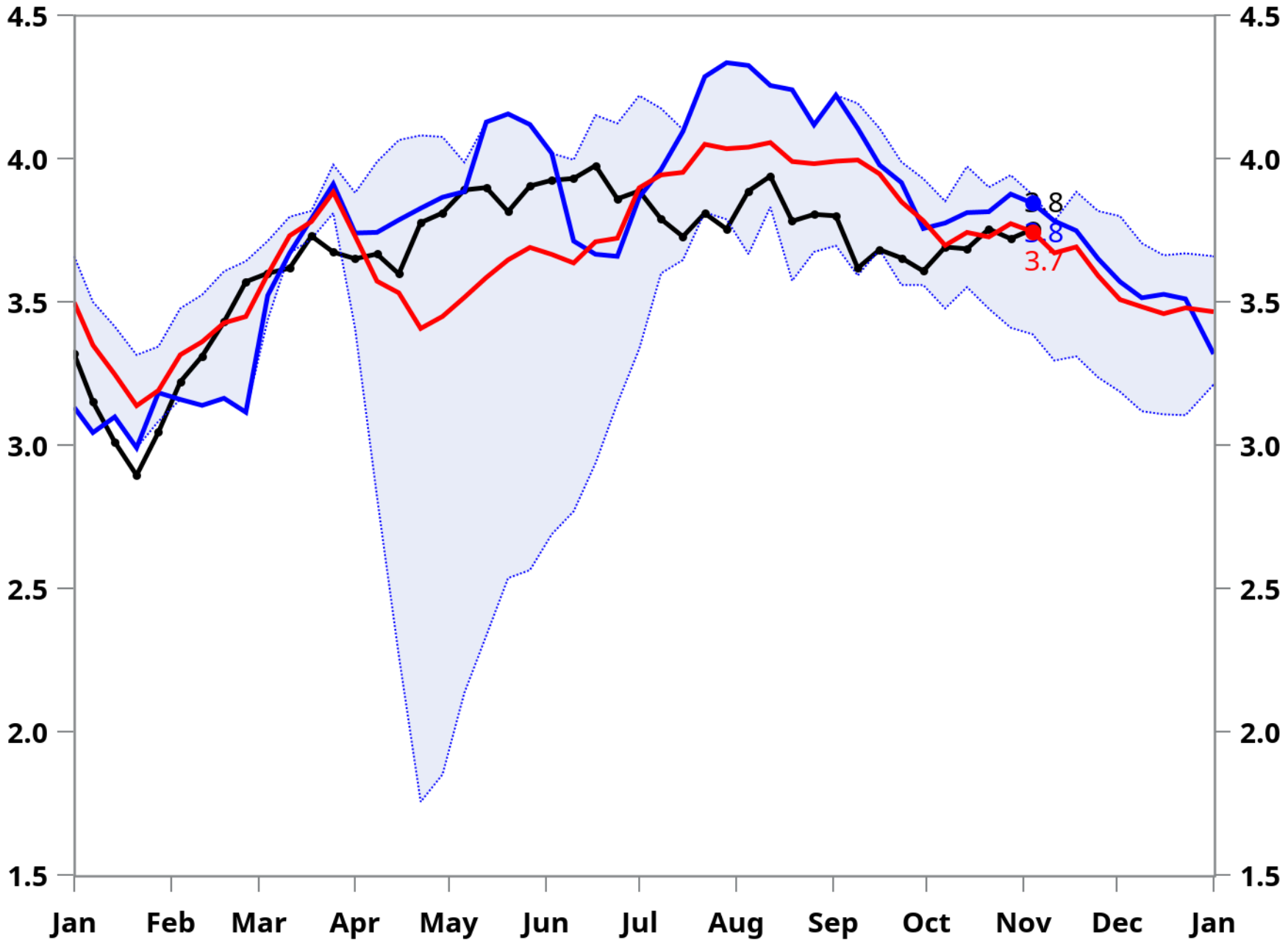
Week Ending: November 4, 2022

3.8 MMBBL/day

Week Change: 0.03 MMBBL

Last Year: 3.8

Five Year Average: 3.7



PADD 1 Gasoline Days Forward Supply (Smoothed with 4-Week Moving Average)

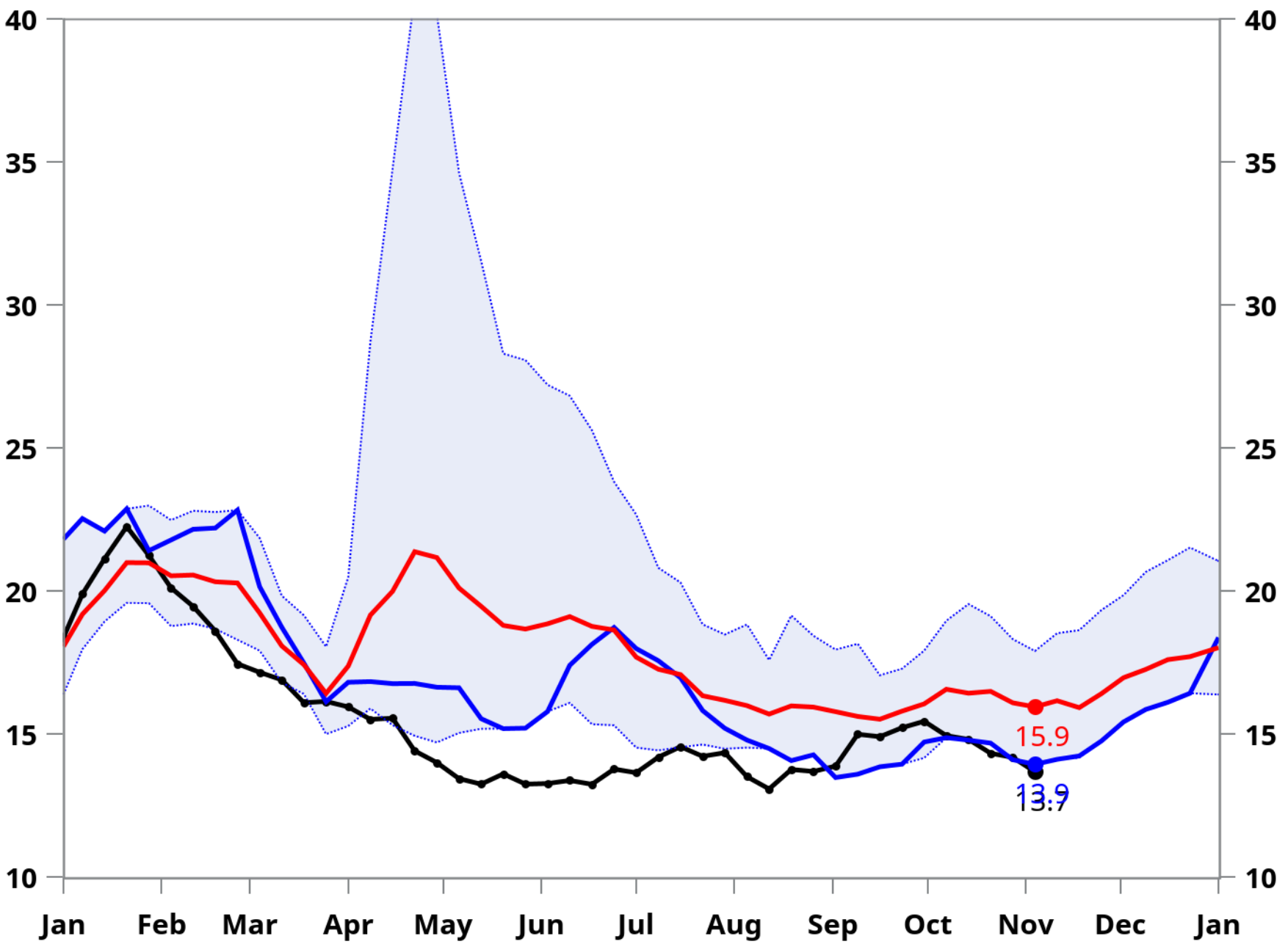
Week Ending: November 4, 2022

13.7 Days

Week Change: -0.50

Last Year: 13.9

Five Year Average: 15.9



Distillates 2022 Year to Date Data

	Distillates Stocks	Distillates Production	Distillates Demand	Days Forward Supply	PADD 3 Distillates Stocks	PADD 3 Distillates Production	PADD 3 Distillates Demand	PADD 3 Days Forward Supply
07JAN	129.4	4.8	.	.	39.3	2.9	.	.
14JAN	128.0	4.7	5.2	24.4	39.3	2.8	2.7	14.3
21JAN	125.2	4.8	5.4	23.3	40.5	2.8	2.6	15.7
28JAN	122.7	4.6	5.2	23.6	38.6	2.5	2.8	13.8
04FEB	121.8	4.7	5.3	23.1	39.9	2.7	2.5	15.9
11FEB	120.3	4.5	5.1	23.5	37.6	2.5	2.8	13.6
18FEB	119.7	4.7	5.2	23.0	36.9	2.6	2.7	13.8
25FEB	119.1	4.7	5.2	22.9	38.0	2.6	2.5	15.4
04MAR	113.9	4.6	5.7	20.1	36.3	2.6	2.8	12.8
11MAR	114.2	4.9	5.1	22.3	37.0	2.8	2.7	13.5
18MAR	112.1	5.0	5.4	20.6	38.3	2.9	2.7	14.0
25MAR	113.5	5.1	5.1	22.5	39.4	2.9	2.8	14.2
01APR	114.3	5.0	5.0	22.8	40.3	3.0	2.9	14.0
08APR	111.4	4.7	5.2	21.3	39.1	2.8	3.0	13.1
15APR	108.7	4.8	5.3	20.5	39.5	2.8	2.7	14.4
22APR	107.3	4.8	5.1	21.0	37.7	2.9	3.1	12.1
29APR	104.9	4.7	5.1	20.4	39.2	2.8	2.6	15.1
06MAY	104.0	4.9	5.1	20.3	40.0	2.9	2.8	14.4
13MAY	105.3	4.9	4.8	21.9	41.1	2.8	2.7	15.3

Distillates 2022 Year to Date Data

	Distillates Stocks	Distillates Production	Distillates Demand	Days Forward Supply	PADD 3 Distillates Stocks	PADD 3 Distillates Production	PADD 3 Distillates Demand	PADD 3 Days Forward Supply
20MAY	106.9	5.1	5.0	21.4	44.3	3.0	2.6	17.2
27MAY	106.4	5.0	5.3	20.0	44.9	2.9	2.8	15.9
03JUN	109.0	5.0	4.9	22.5	41.9	2.9	3.3	12.6
10JUN	112.4	5.1	4.7	23.7	40.5	3.0	3.2	12.6
17JUN	109.8	5.1	5.5	19.9	39.8	2.9	3.0	13.4
24JUN	112.4	5.1	4.9	23.1	40.5	3.0	2.9	13.9
01JUL	111.1	5.4	5.7	19.6	42.6	3.1	2.9	14.8
08JUL	113.8	5.1	4.9	23.3	42.1	3.1	3.2	13.3
15JUL	112.5	5.0	5.3	21.1	41.3	3.0	3.2	13.1
22JUL	111.7	5.0	5.2	21.3	41.5	3.0	3.0	14.0
29JUL	109.3	4.9	5.5	19.8	40.2	3.0	3.2	12.6
05AUG	111.5	5.1	5.0	22.2	42.4	3.0	2.7	15.6
12AUG	112.3	5.2	5.2	21.5	43.7	3.0	2.8	15.4
19AUG	111.6	5.2	5.5	20.4	42.2	3.0	3.2	13.1
26AUG	111.7	4.9	5.1	21.9	41.7	2.9	3.0	14.0
02SEP	111.8	5.0	5.2	21.5	40.3	3.0	3.2	12.5
09SEP	116.0	5.0	4.5	25.5	44.2	3.0	2.4	18.5
16SEP	117.3	5.2	5.2	22.7	45.4	3.2	3.0	15.2
23SEP	114.4	5.0	5.5	20.9	44.6	3.0	3.1	14.5

Distillates 2022 Year to Date Data

	Distillates Stocks	Distillates Production	Distillates Demand	Days Forward Supply	PADD 3 Distillates Stocks	PADD 3 Distillates Production	PADD 3 Distillates Demand	PADD 3 Days Forward Supply
30SEP	110.9	5.2	5.8	19.3	43.3	3.1	3.3	13.1
07OCT	106.1	4.9	5.6	18.8	40.8	2.9	3.2	12.7
14OCT	106.2	5.0	5.1	20.8	41.2	3.0	2.9	14.3
21OCT	106.4	5.0	5.1	20.9	42.8	2.8	2.6	16.7
28OCT	106.8	5.1	5.2	20.6	42.1	2.9	3.0	13.9
04NOV	106.3	5.2	5.6	19.0	41.4	3.0	3.1	13.5

Total Distillates Stocks

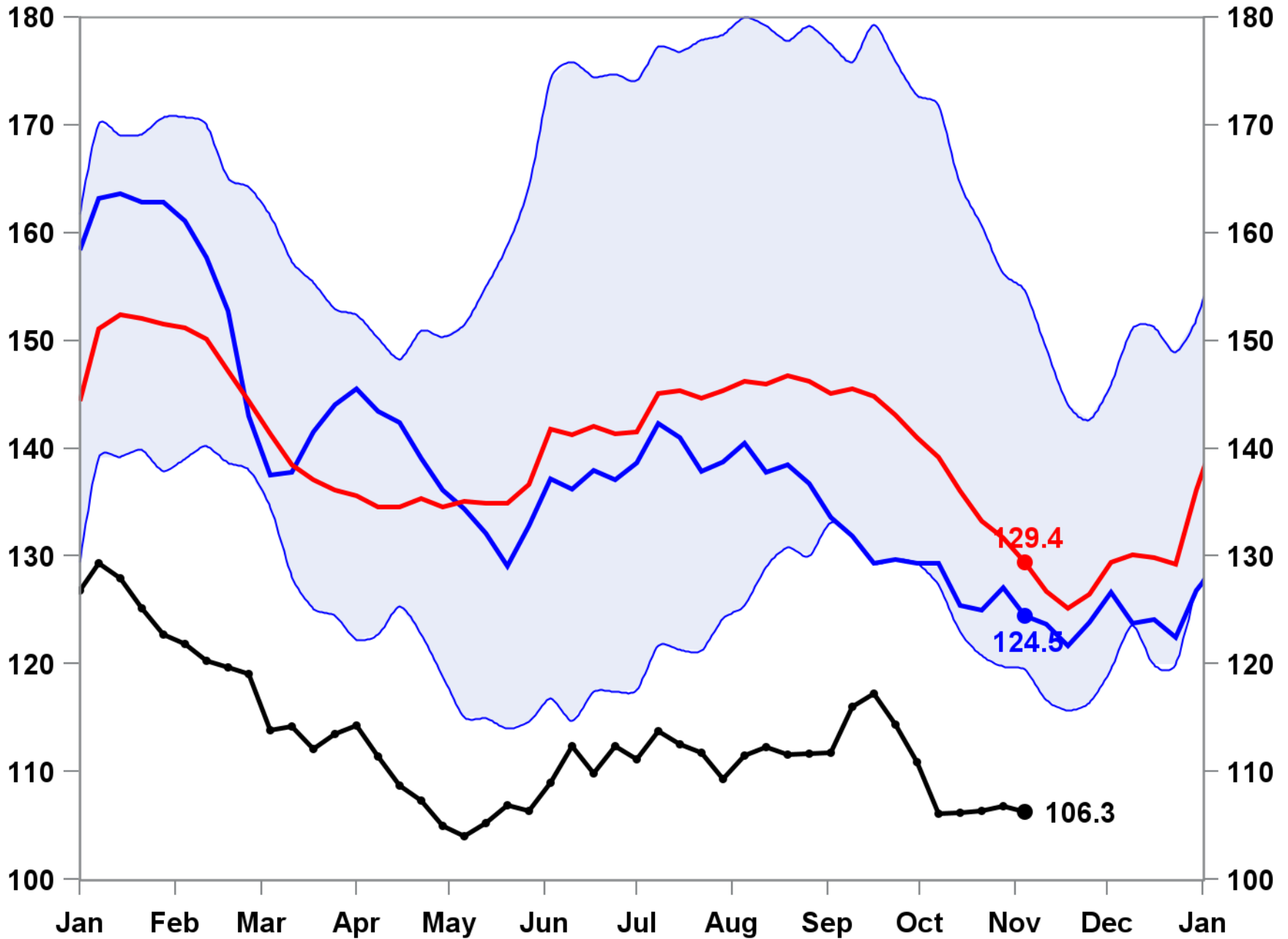
Week Ending: November 4, 2022

106.3 MMBBL

Week Change: -0.5 MMBBL

Last Year: 124.5

Five Year Average: 129.4



Total Distillates Production (4-Week Moving Average Smoothing)

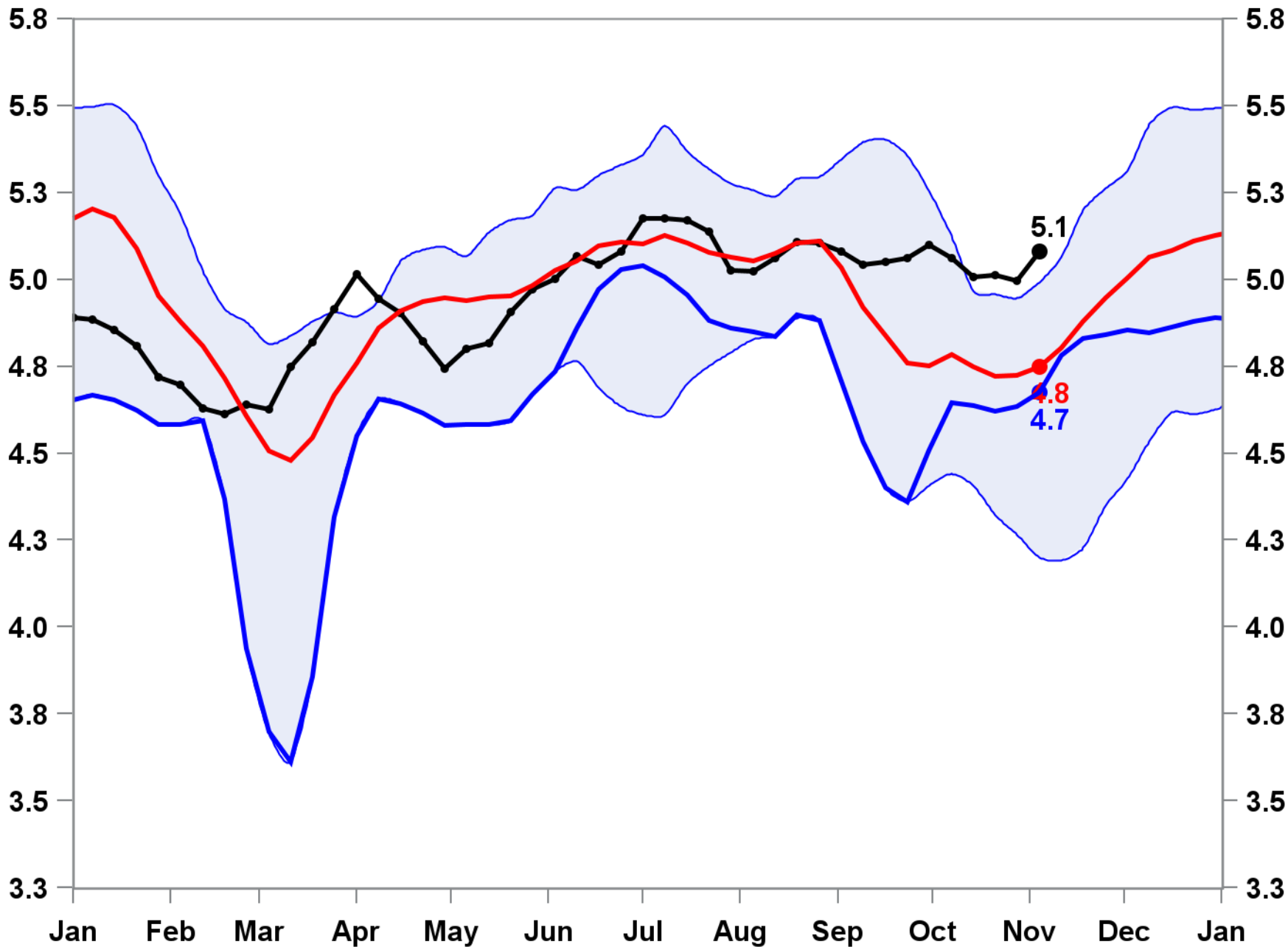
Week Ending: November 4, 2022

5.1 MMBBL/day

Week Change: 0.1 MMBBL

Last Year: 4.7

Five Year Average: 4.8



Distillates Demand (Smoothed with 4-Week Moving Average)

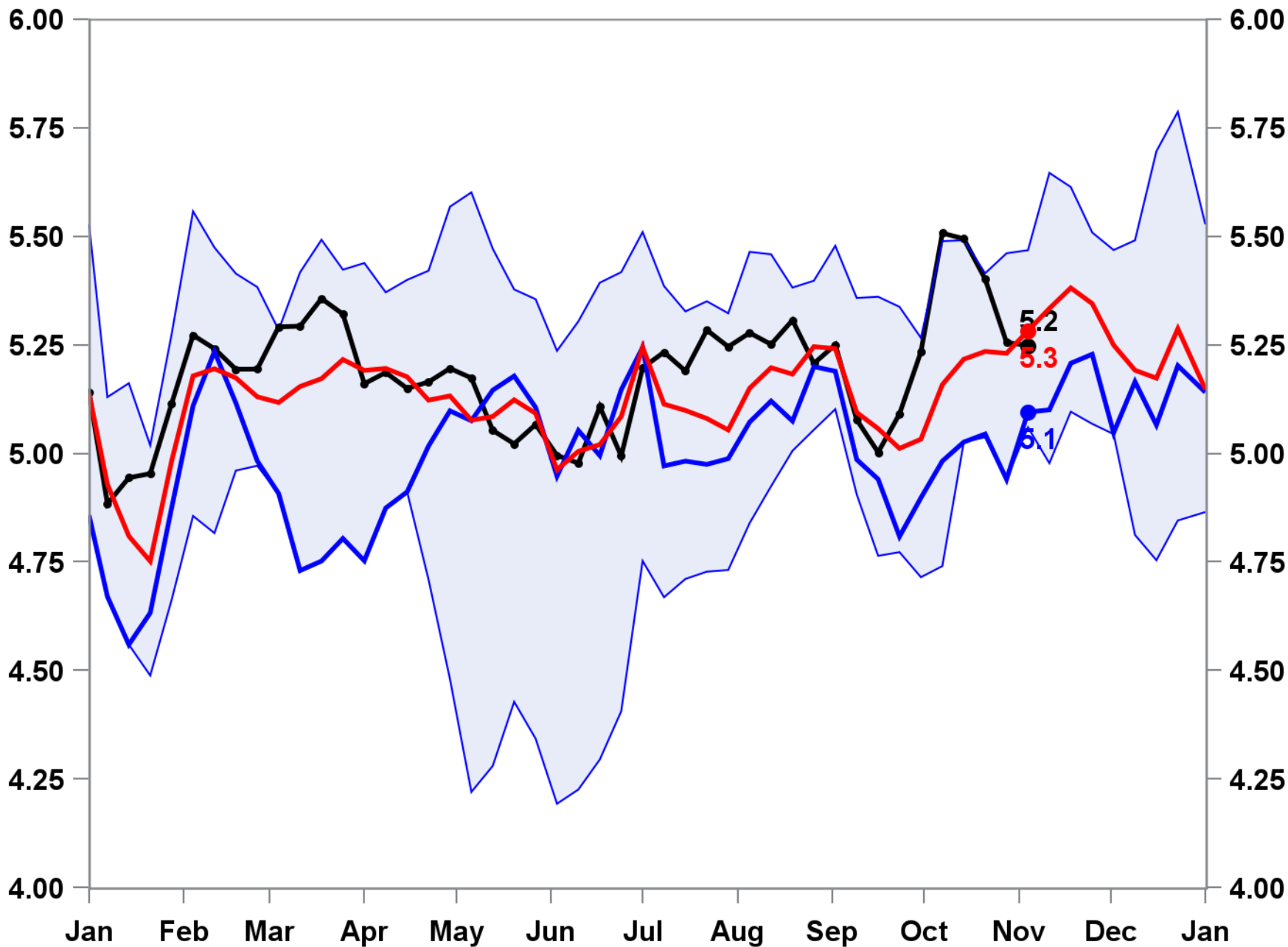
Week Ending: November 4, 2022

5.2 MMBBL/day

Week Change: -0.01 MMBBL

Last Year: 5.1

Five Year Average: 5.3



Distillates Days Forward Supply (Smoothed with 4-Week Moving Average)

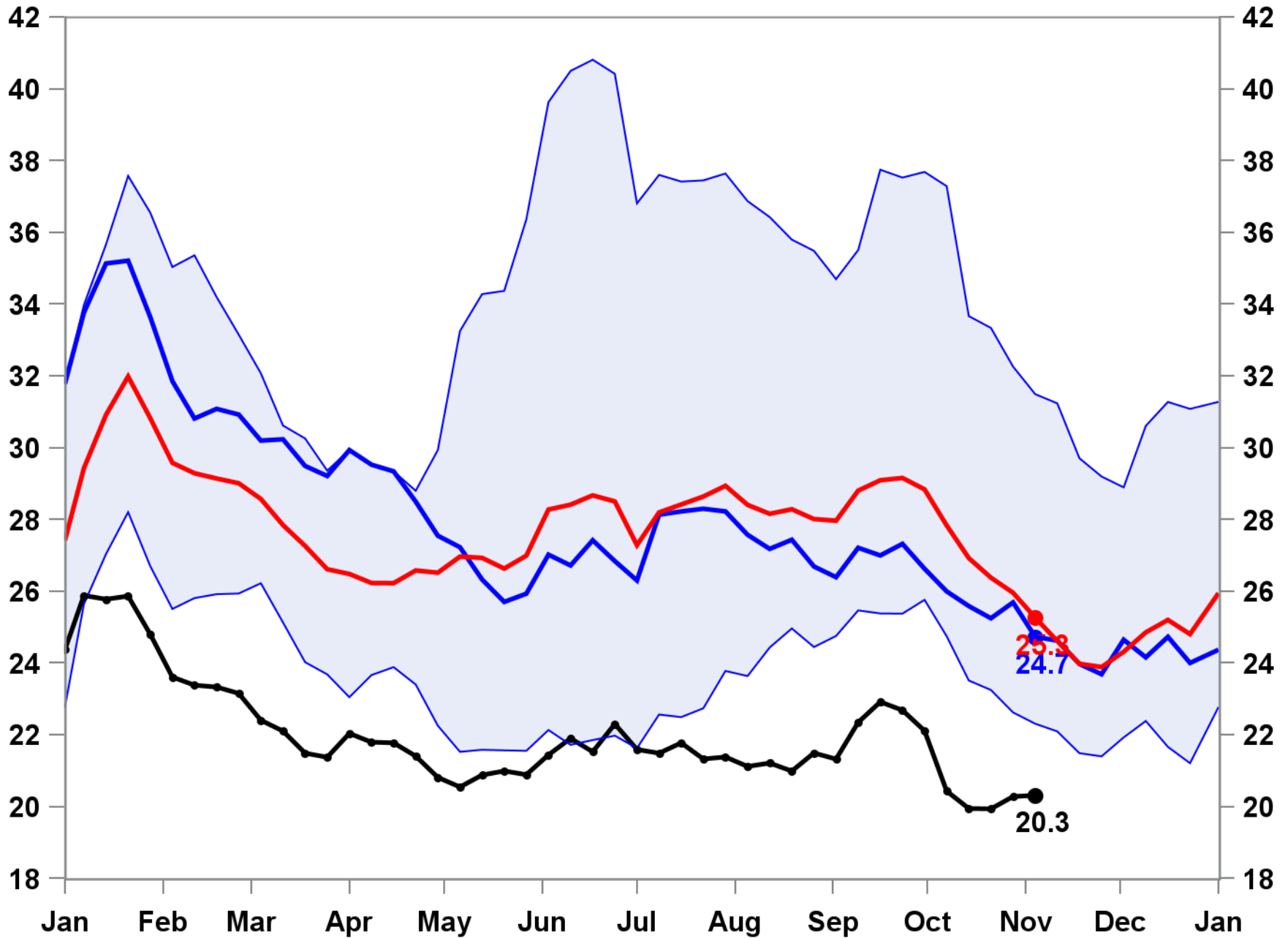
Week Ending: November 4, 2022

20.3 Days

Week Change: 0.03

Last Year: 24.7

Five Year Average: 25.3



Total Distillates Exports (Smoothed with 4-Week Moving Average)

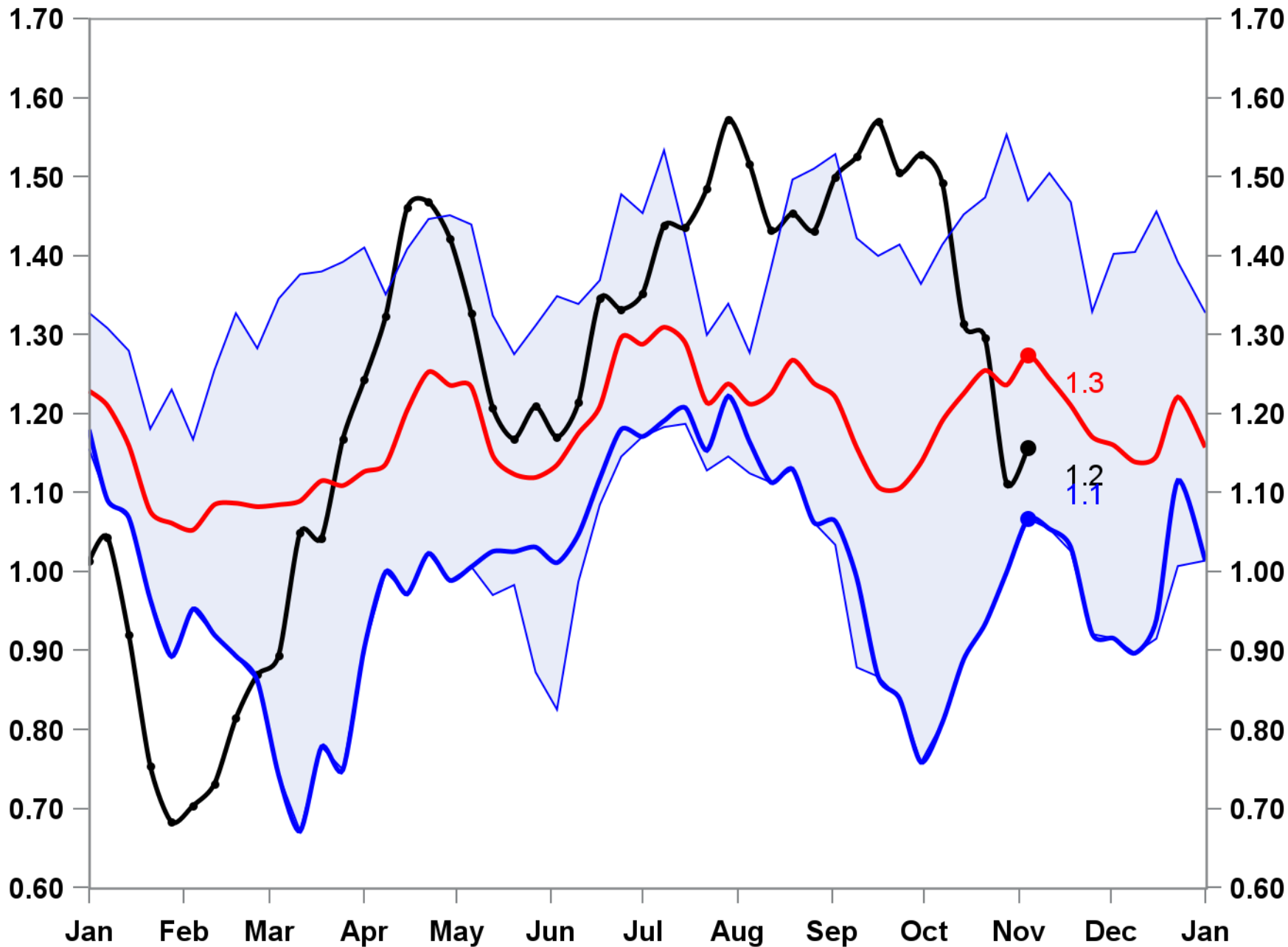
Week Ending: November 4, 2022

1.2 MMBBL

Week Change: 0.05 MMBBL

Last Year: 1.1

Five Year Average: 1.3



PADD 3 Distillates Stocks

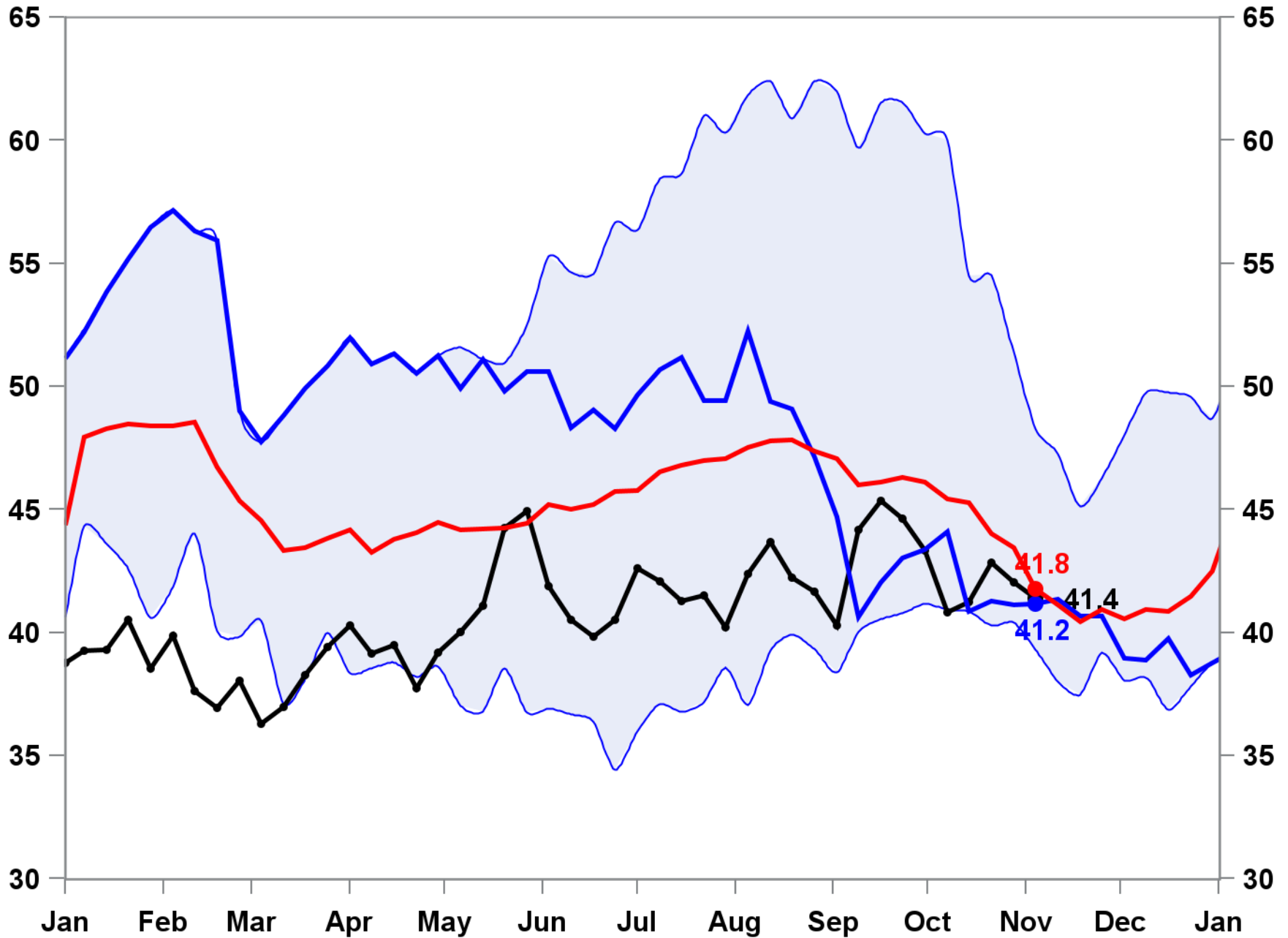
Week Ending: November 4, 2022

41.4 MMBBL

Week Change: -0.7 MMBBL

Last Year: 41.2

Five Year Average: 41.8



PADD 3 Distillates Production (4-Week Moving Average Smoothing)

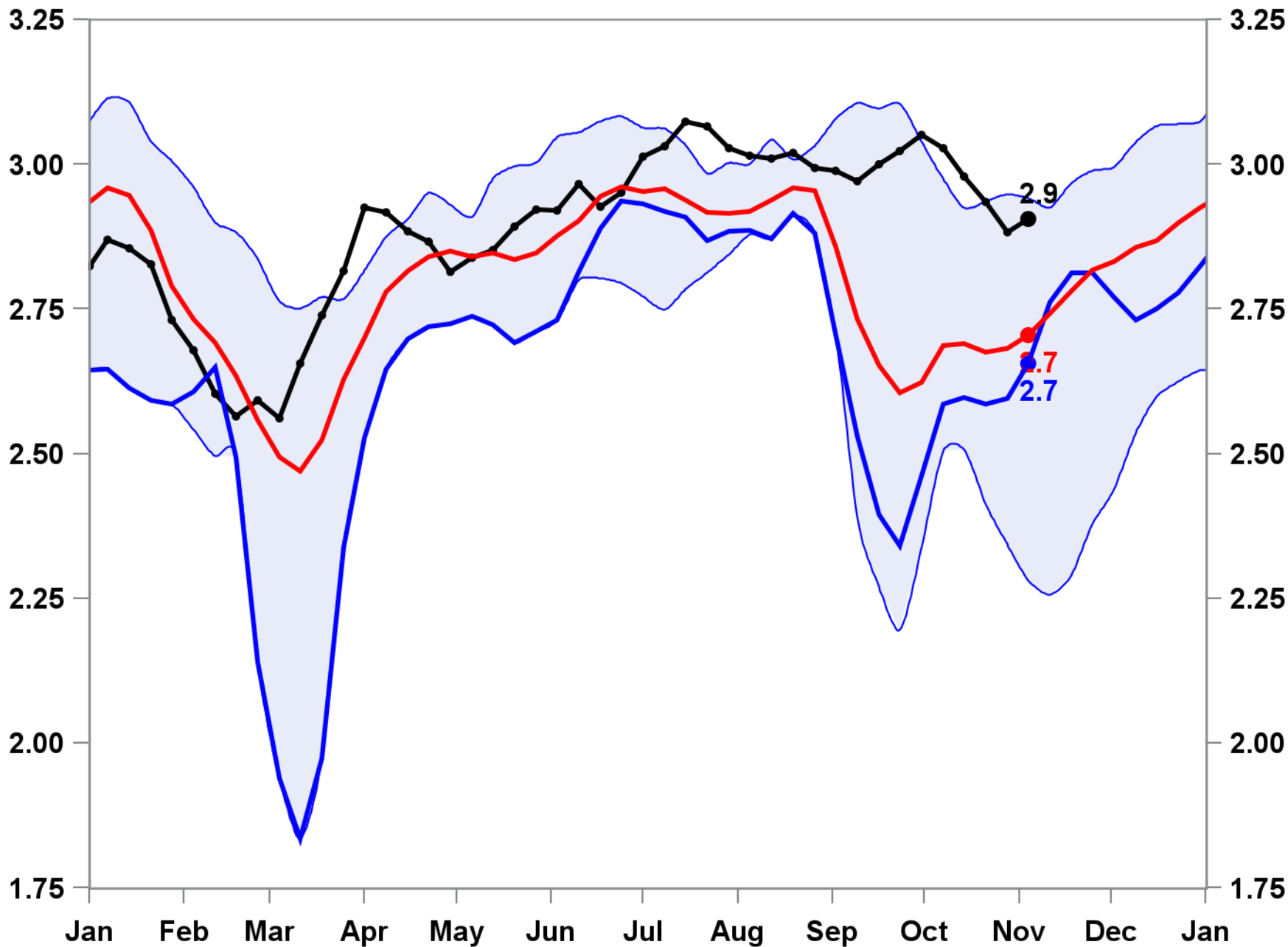
Week Ending: November 4, 2022

2.9 MMBBL/day

Week Change: 0.0 MMBBL

Last Year: 2.7

Five Year Average: 2.7



PADD 3 Distillates Demand (Smoothed with 4-Week Moving Average)

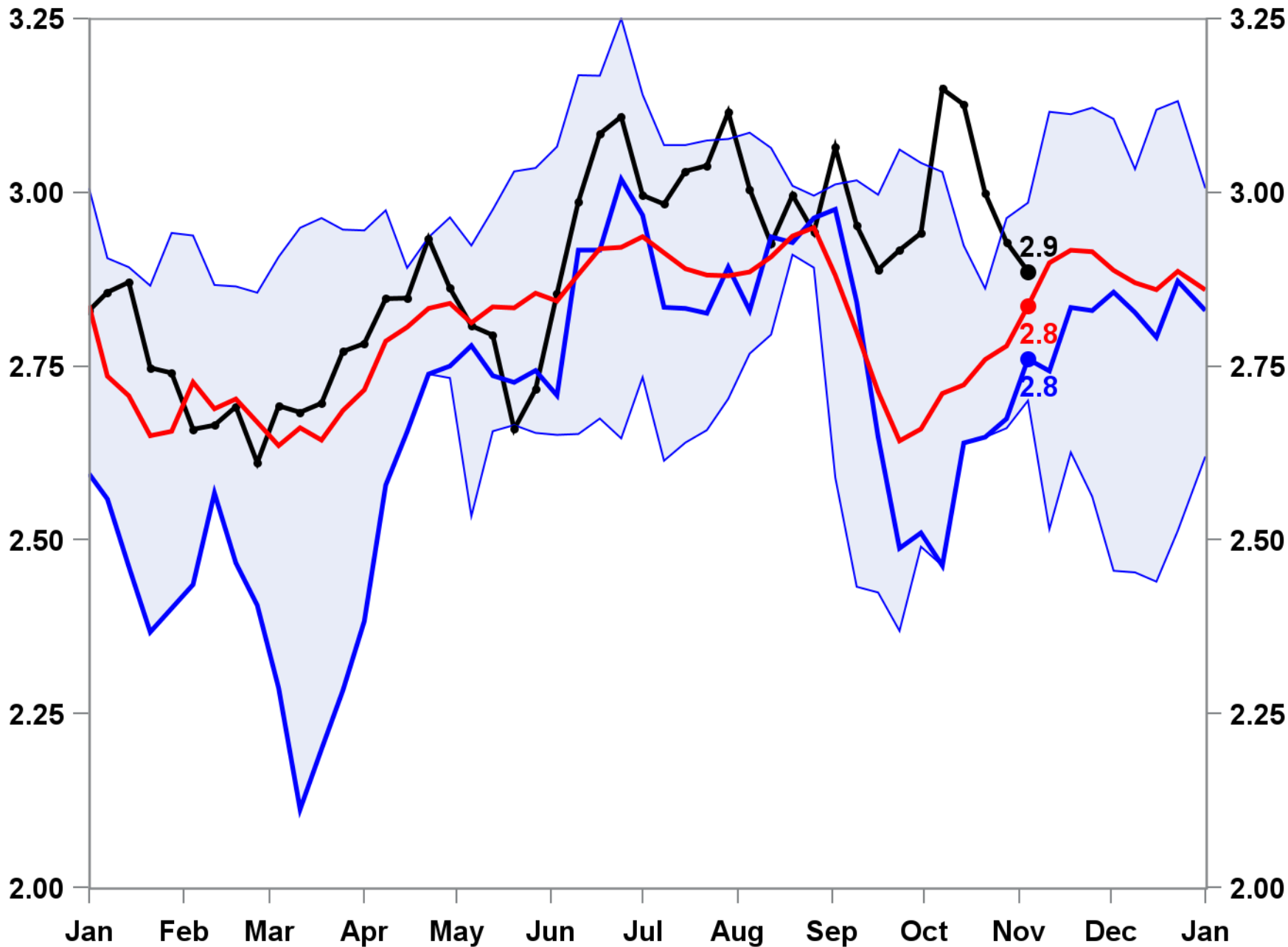
Week Ending: November 4, 2022

2.9 MMBBL/day

Week Change: -0.04 MMBBL

Last Year: 2.8

Five Year Average: 2.8



PADD 3 Distillates Days Forward Supply (Smoothed with 4-Week Moving Average)

Week Ending: November 4, 2022

14.6 Days

Week Change: 0.22

Last Year: 15.0

Five Year Average: 15.8

