



U.S. Energy Information  
Administration



# **EIA Weekly Petroleum Status Report**

**September 16, 2022 Report**

**Charts and Tables provided by Fundamental Analytics**

---

# EIA Crude Oil and Refined Products September 16, 2022 Update

---

<b>Highlights of the EIA Petroleum Report</b> . . . . .	<b>1</b>
. . . . .	1
<b>EIA Weekly Petroleum Summary</b> . . . . .	<b>2</b>
<b>Table: Stocks Summary</b> . . . . .	<b>3</b>
<b>Table: Stocks by PADD</b> . . . . .	<b>3</b>
<b>Table: Stocks by PADD cont.</b> . . . . .	<b>3</b>
<b>Table: Crude Runs</b> . . . . .	<b>5</b>
<b>Table: Refinery Runs</b> . . . . .	<b>5</b>
. . . . .	5
<b>Comments on EIA Crude Oil data</b> . . . . .	<b>6</b>
. . . . .	6
<b>WTI Crude High-Low-Close Bar Chart to coincide with EIA Report</b> . . . . .	<b>7</b>
High-Low-Close Bar Chart . . . . .	7
<b>Crude High-Low-Close with Crude Stocks Change</b> . . . . .	<b>8</b>
Crude Stocks Weekly Change Plotted . . . . .	8
<b>Crude Oil Stocks</b> . . . . .	<b>9</b>
With 5 Year Range . . . . .	9
<b>Cushing Crude Oil Stocks</b> . . . . .	<b>10</b>
With 5 Year Range . . . . .	10
<b>PADD 2 Crude Oil Stocks</b> . . . . .	<b>11</b>
With 5 Year Range . . . . .	11
<b>PADD 3 Crude Oil Stocks</b> . . . . .	<b>12</b>
With 5 Year Range . . . . .	12
<b>Total Crude Oil Production</b> . . . . .	<b>13</b>
Time Series Plot . . . . .	13
<b>Crude Oil Days Forward Supply</b> . . . . .	<b>14</b>
With 5 Year Range . . . . .	14
<b>Total Petroleum Stocks</b> . . . . .	<b>15</b>
With 5 Year Range . . . . .	15

<b>Total Crude Imports</b> . . . . .	<b>16</b>
With Five Year Range . . . . .	16
<b>Refinery Utilization</b> . . . . .	<b>17</b>
With 5 Year Range . . . . .	17
<b>Crude Runs</b> . . . . .	<b>18</b>
With 5 Year Range . . . . .	18
<b>Total Crude Oil Exports</b> . . . . .	<b>19</b>
. . . . .	19
<b>Comments on EIA Gasoline data</b> . . . . .	<b>20</b>
. . . . .	20
<b>Total Gasoline Stocks</b> . . . . .	<b>21</b>
With Five Year Range . . . . .	21
<b>Total Gasoline Production</b> . . . . .	<b>22</b>
With Five Year Range . . . . .	22
<b>Total Gasoline Demand</b> . . . . .	<b>23</b>
With Five Year Range . . . . .	23
<b>Total Gasoline Days Forward Supply</b> . . . . .	<b>24</b>
. . . . .	24
<b>Comments on EIA Distillates data</b> . . . . .	<b>25</b>
. . . . .	25
<b>Total Distillates Stocks</b> . . . . .	<b>26</b>
With Five Year Range . . . . .	26
<b>Total Distillates Production</b> . . . . .	<b>27</b>
With Five Year Range . . . . .	27
<b>Total Distillates Demand</b> . . . . .	<b>28</b>
With Five Year Range . . . . .	28
<b>Total Distillates Days Forward Supply</b> . . . . .	<b>29</b>
With Five Year Range . . . . .	29
<b>Total Distillates Exports</b> . . . . .	<b>30</b>
With 5 Year Range . . . . .	30

**The September 16 EIA report was mostly bearish for energy prices.**

- **EIA Total MotorGasoline stocks increased 1.57 million barrels to 214.6 when average expectations were for a 450,000 barrel draw (see page 22).**
- **EIA Total Distillates stocks increased by 1.23 million barrels 117.3 million bbl, while average expectations were for a 50,000 bbl draw. (see page 27)**
- **Cushing Crude stocks rose by 343,000 bbl to 25.0 barrels (see page 11).**
- **However, Total Crude Stocks increased 1.1 million bbl to 430.8 million bbl, less than expectations of a 2.2 million bbl build (see page 10).**

## EIA Petroleum Stocks

(Million Barrels)	Current Week	Change	Week Ago	Year Ago	Difference
<b>Crude Oil</b>	<b>857.9</b>	<b>-5.8</b>	<b>863.7</b>	<b>1,033.5</b>	<b>-175.6</b>
<b>Commercial</b>	<b>430.8</b>	<b>1.1</b>	<b>429.6</b>	<b>414.0</b>	<b>16.8</b>
<b>SPR</b>	<b>427.2</b>	<b>-6.9</b>	<b>434.1</b>	<b>619.6</b>	<b>-192.4</b>
<b>Total Motor Gasoline</b>	<b>214.6</b>	<b>1.6</b>	<b>213.0</b>	<b>221.6</b>	<b>-7.0</b>
<b>Conventional</b>	<b>18.4</b>	<b>0.2</b>	<b>18.2</b>	<b>20.3</b>	<b>-1.9</b>
<b>Blending Components</b>	<b>196.2</b>	<b>1.4</b>	<b>194.9</b>	<b>201.3</b>	<b>-5.1</b>
<b>Fuel Ethanol</b>	<b>22.5</b>	<b>-0.3</b>	<b>22.8</b>	<b>20.1</b>	<b>2.4</b>
<b>Kerosene-Type Jet Fuel</b>	<b>39.2</b>	<b>-0.0</b>	<b>39.2</b>	<b>42.4</b>	<b>-3.2</b>
<b>Distillate Fuel Oil</b>	<b>117.3</b>	<b>1.2</b>	<b>116.0</b>	<b>129.3</b>	<b>-12.1</b>
<b>15 ppm sulfur and under</b>	<b>106.6</b>	<b>0.6</b>	<b>106.0</b>	<b>117.6</b>	<b>-11.0</b>
<b>&gt;15 ppm to 500 ppm sulfur</b>	<b>2.8</b>	<b>0.2</b>	<b>2.6</b>	<b>3.1</b>	<b>-0.3</b>
<b>&gt;500 ppm sulfur</b>	<b>7.9</b>	<b>0.4</b>	<b>7.5</b>	<b>8.7</b>	<b>-0.8</b>
<b>Residual Fuel Oil</b>	<b>29.4</b>	<b>1.1</b>	<b>28.3</b>	<b>30.0</b>	<b>-0.6</b>
<b>Propane/Propylene</b>	<b>81.2</b>	<b>3.3</b>	<b>77.9</b>	<b>70.3</b>	<b>10.9</b>
<b>Other Oils</b>	<b>305.0</b>	<b>1.3</b>	<b>303.7</b>	<b>294.4</b>	<b>10.6</b>
<b>Unfinished Oils</b>	<b>83.9</b>	<b>-0.2</b>	<b>84.1</b>	<b>87.1</b>	<b>-3.2</b>

## Stocks Summary

Million Barrels	Latest Data	Week Change	Last Week	Last Year	Diff To Last Year	5-Year Average	Diff To 5-Yr Average
<b>Crude</b>	<b>430.8</b>	<b>1.1</b>	<b>429.6</b>	<b>414.0</b>	<b>16.8</b>	<b>439.0</b>	<b>-8.2</b>
<b>Gasoline</b>	<b>214.6</b>	<b>1.6</b>	<b>213.0</b>	<b>221.6</b>	<b>-7.0</b>	<b>226.5</b>	<b>-11.8</b>
<b>Distillates</b>	<b>117.3</b>	<b>1.2</b>	<b>116.0</b>	<b>129.3</b>	<b>-12.1</b>	<b>143.0</b>	<b>-25.7</b>
<b>Crude Runs (/day)</b>	<b>16.4</b>	<b>0.3</b>	<b>16.0</b>	<b>15.3</b>	<b>1.0</b>	<b>15.6</b>	<b>0.8</b>
<b>Refinery Utilization (%)</b>	<b>93.6</b>	<b>2.1</b>	<b>91.5</b>	<b>87.5</b>	<b>6.1</b>	<b>86.2</b>	<b>7.4</b>

## Stocks by PADD

	Crude Stocks	Week Chg	5 Year Average	Last Year	Gasoline Stocks	Week Chg	5 Year Average	Last Year	Distillate Stocks	Week Chg	5 Year Average	Last Year
PADD 1	8.5	0.2	11.1	8.0	56.4	0.5	60.2	53.9	27.9	-0.2	47.4	39.8
PADD 2	106.9	-0.9	125.7	111.1	43.7	1.1	49.7	46.9	28.1	0.6	33.0	31.2
PADD 3	244.7	2.2	230.8	223.9	82.4	-0.2	80.3	81.5	45.4	1.2	46.1	42.0
PADD 4	23.1	0.4	22.2	23.4	6.3	0.1	7.1	7.1	3.7	0.1	3.8	3.5
PADD 5	47.5	-0.6	49.1	47.5	25.8	0.1	29.1	32.1	12.2	-0.5	12.7	12.8
<b>Total</b>	<b>430.8</b>	<b>1.1</b>	<b>439.0</b>	<b>414.0</b>	<b>214.6</b>	<b>1.6</b>	<b>226.5</b>	<b>221.6</b>	<b>117.3</b>	<b>1.2</b>	<b>143.0</b>	<b>129.3</b>

	RBOB Stocks	Week Chg	5 Year Average	Last Year	Residual Stocks	Week Chg	5 Year Average	Last Year	Jet Stocks	Week Chg	5 Year Average	Last Year
PADD 1	19.6	0.3	13.5	17.0	4.9	0.8	7.3	5.6	9.5	-0.0	10.5	9.6
PADD 2	5.5	0.4	6.3	6.8	0.9	0.0	1.2	1.1	7.0	-0.3	7.7	8.0
PADD 3	11.8	0.1	8.0	11.6	18.0	0.5	17.7	17.3	12.9	0.4	14.7	15.3
PADD 4	0.0	0.0	0.0	0.0	0.2	-0.0	0.2	0.2	0.8	0.0	0.8	0.8

	RBOB Stocks	Week Chg	5 Year Average	Last Year	Residual Stocks	Week Chg	5 Year Average	Last Year	Jet Stocks	Week Chg	5 Year Average	Last Year
PADD 5	11.5	-0.7	10.0	10.5	5.4	-0.3	5.2	5.8	8.9	-0.2	9.3	8.7
<b>Total</b>	<b>48.5</b>	<b>0.2</b>	<b>37.8</b>	<b>45.9</b>	<b>29.4</b>	<b>1.1</b>	<b>31.6</b>	<b>30.0</b>	<b>39.2</b>	<b>-0.0</b>	<b>43.0</b>	<b>42.4</b>

## Crude Runs

kbd	Latest Data	Last Week	Week Change	Last Year	Diff to Last Year	5 Year Average	Diff to 5 Year Average
PADD 1	742	694	-48	720	22	827	-85
PADD 2	3,980	4,272	292	3,995	-15	3,629	351
PADD 3	8,990	9,148	158	7,741	1,249	8,156	834
PADD 4	594	588	-6	616	-22	623	-29
PADD 5	2,050	1,989	-61	2,275	-225	2,348	-298
<b>Total</b>	<b>16,355</b>	<b>16,688</b>	<b>333</b>	<b>15,347</b>	<b>1,008</b>	<b>15,584</b>	<b>771</b>

## Refinery Runs

kbd	Latest Data	Last Week	Week Change	Last Year	Diff to Last Year	5 Year Average	Diff to 5 Year Average
PADD 1	745	697	-48	761	-16	848	-103
PADD 2	3,979	4,256	277	4,027	-48	3,636	343
PADD 3	9,311	9,528	217	7,993	1,318	8,367	944
PADD 4	594	588	-6	619	-25	629	-35
PADD 5	2,164	2,100	-64	2,463	-299	2,509	-345
<b>Total</b>	<b>16,793</b>	<b>17,170</b>	<b>377</b>	<b>15,863</b>	<b>930</b>	<b>15,988</b>	<b>805</b>



**Crude Oil Stocks at 430.8 million barrels are now approaching the 5-Year Average (see page 9)**

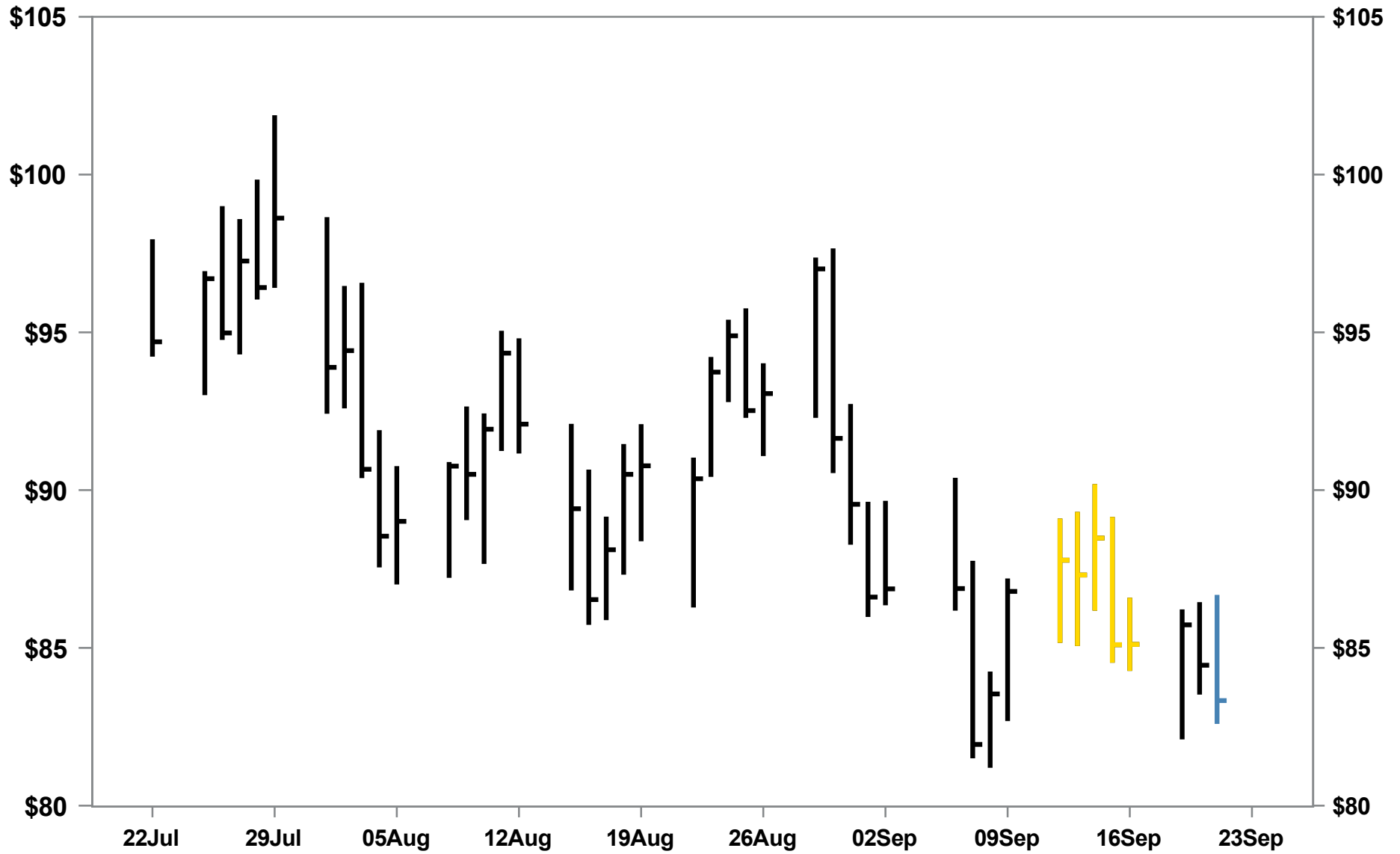
**PADD 3 Crude Stocks are have now definitely exceeded last year's stocks and the 5-Year Average in a counter-seasonal increase in stocks (see page 12).**

**Crude Production is unchanged at 12.1 million barrels per day.**

**Total Petroleum has now increased to greater than last year at this week. (see page 15).**

**Refinery Utilization at 93.6% has nearly surpassed the 5-Year maximum (page 17).**

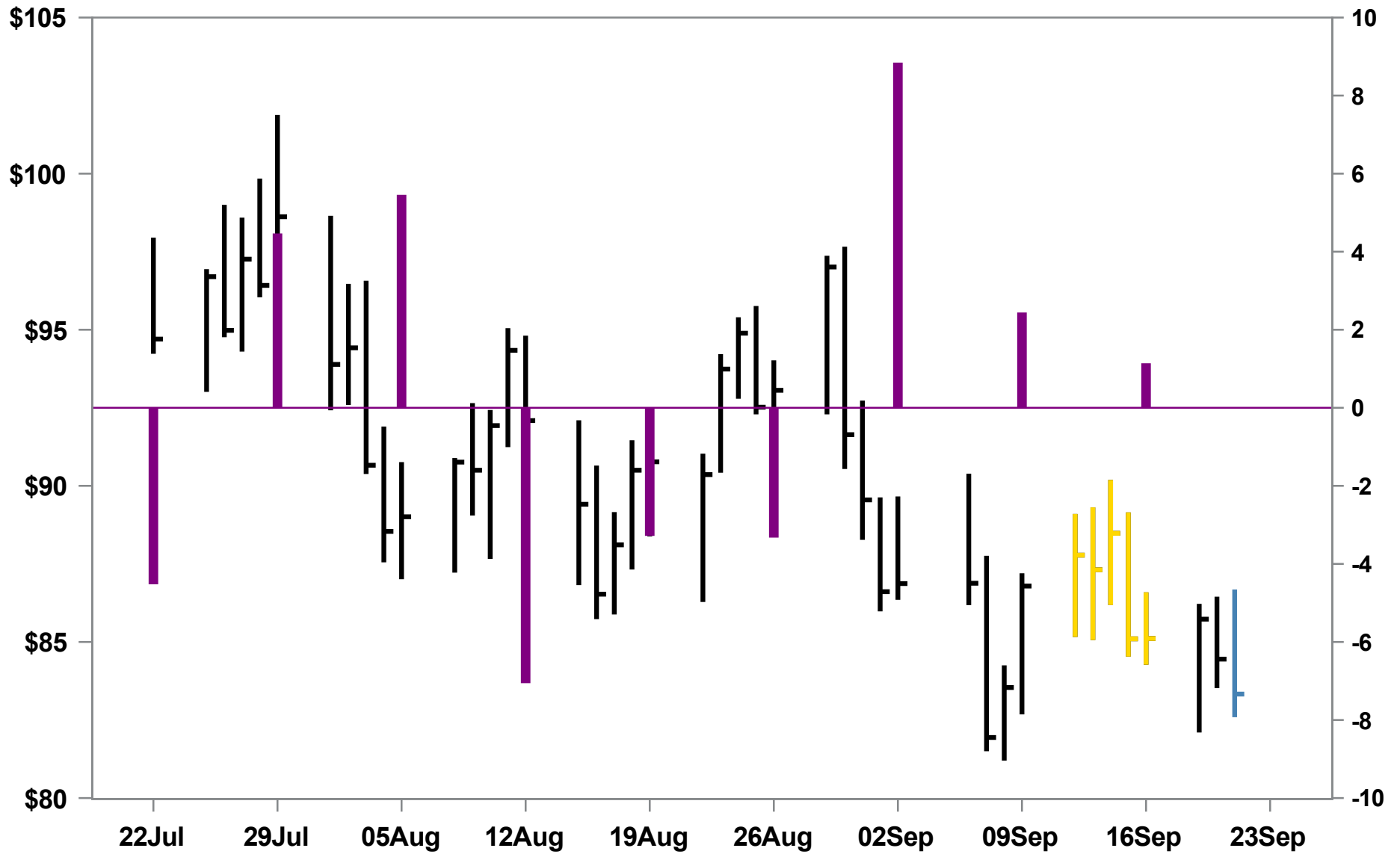
# WTI Crude High-Low-Close Bar Chart to coincide with EIA Report



Source: EIA Fundamental Analytics

[www.fundamentalanalytics.com](http://www.fundamentalanalytics.com)

# WTI Crude High-Low-Close Bar Chart to coincide with EIA Report



Source: EIA Fundamental Analytics

[www.fundamentalanalytics.com](http://www.fundamentalanalytics.com)

# Total Crude Stocks

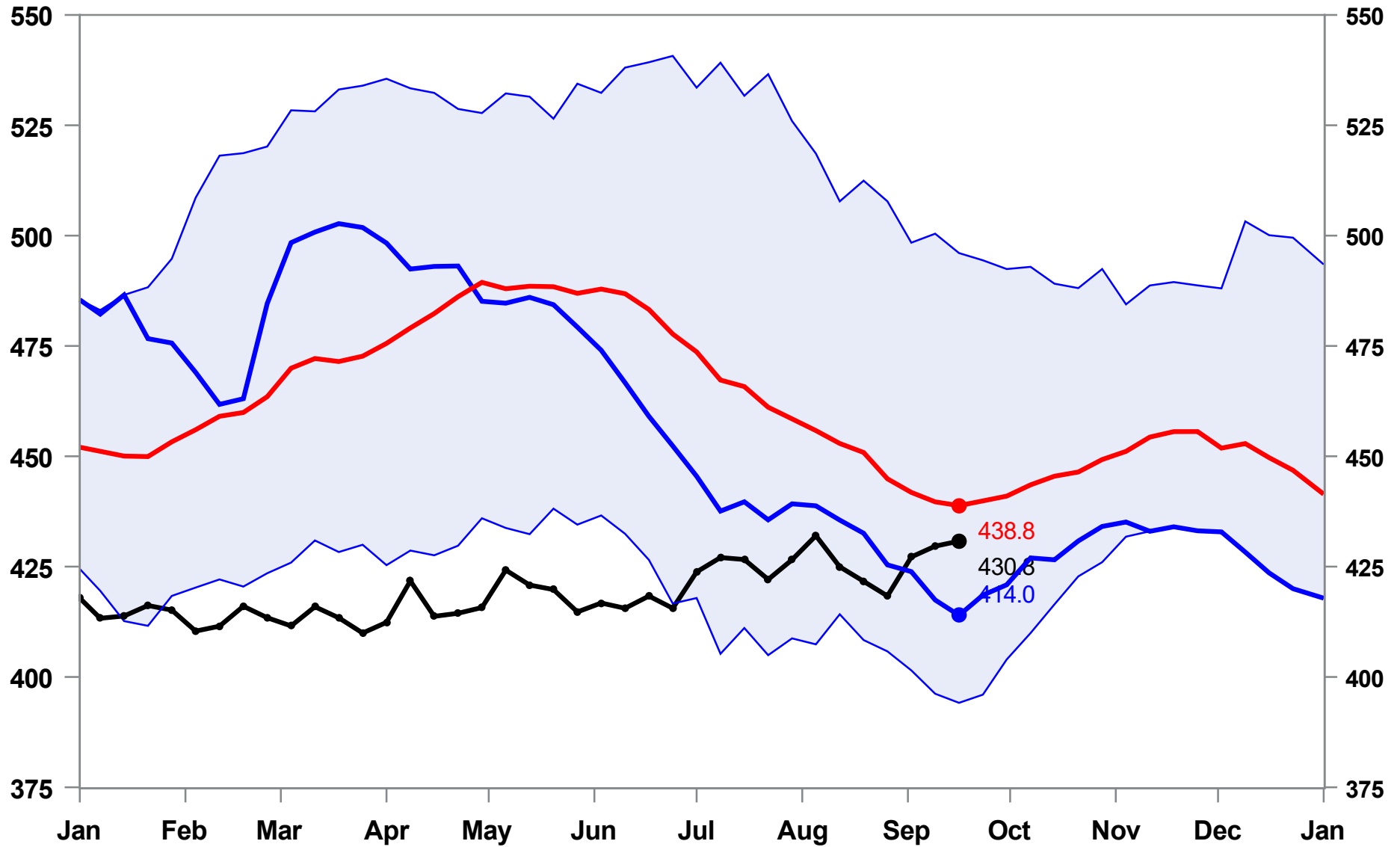
430.8 MMBBL

Week Ending: September 16, 2022

Week Change: 1.1 MMBBL

Last Year: 414.0

Five Year Average: 438.8



Source: EIA Fundamental Analytics

[www.fundamentalanalytics.com](http://www.fundamentalanalytics.com)

# Cushing Crude Oil Stocks

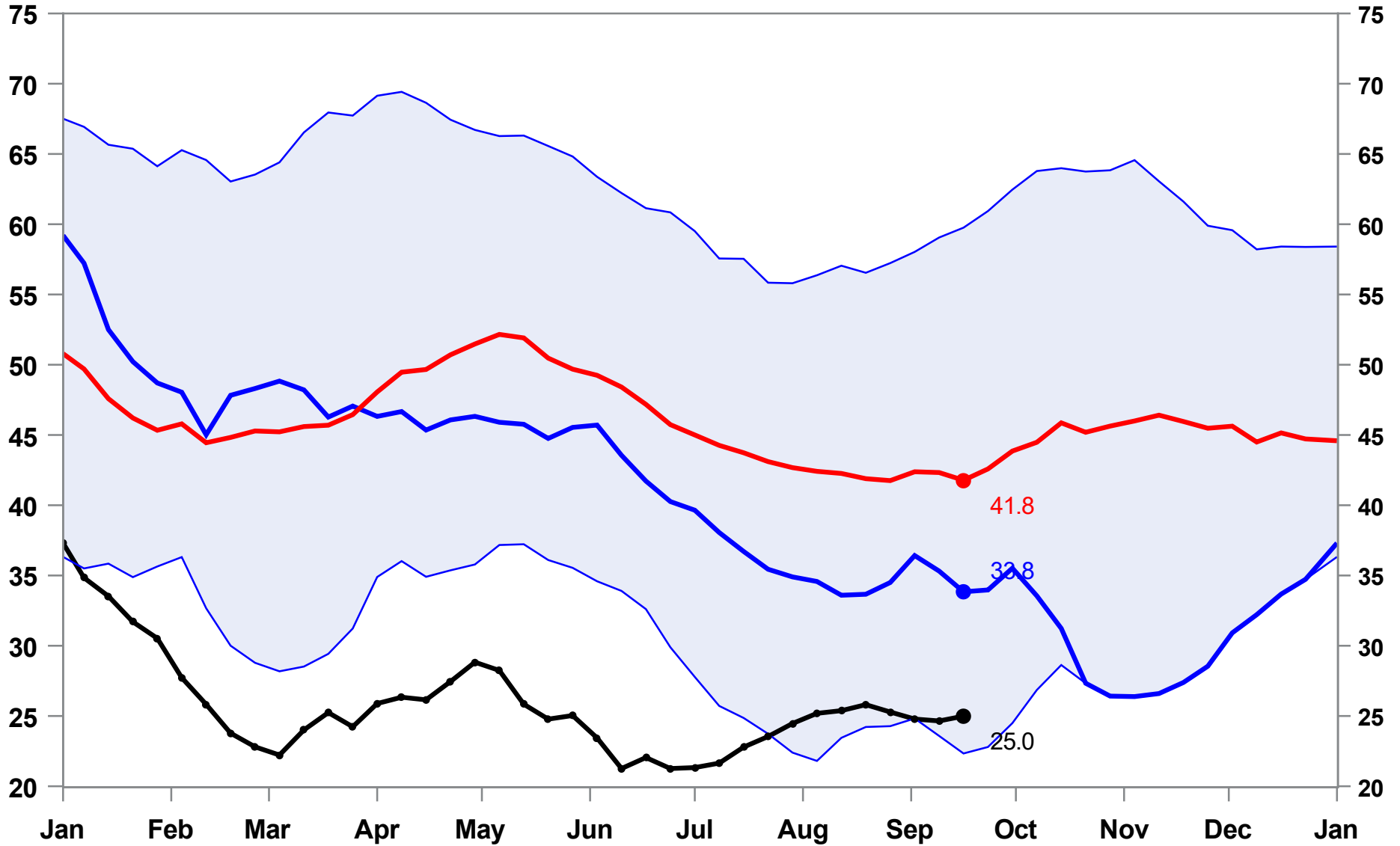
Week Ending: September 16, 2022

25.0 MMBBL

Week Change: 0.3 MMBBL

Last Year: 33.8

Five Year Average: 41.8



Source: EIA Fundamental Analytics

[www.fundamentalanalytics.com](http://www.fundamentalanalytics.com)

# PADD 2 Crude Oil Stocks

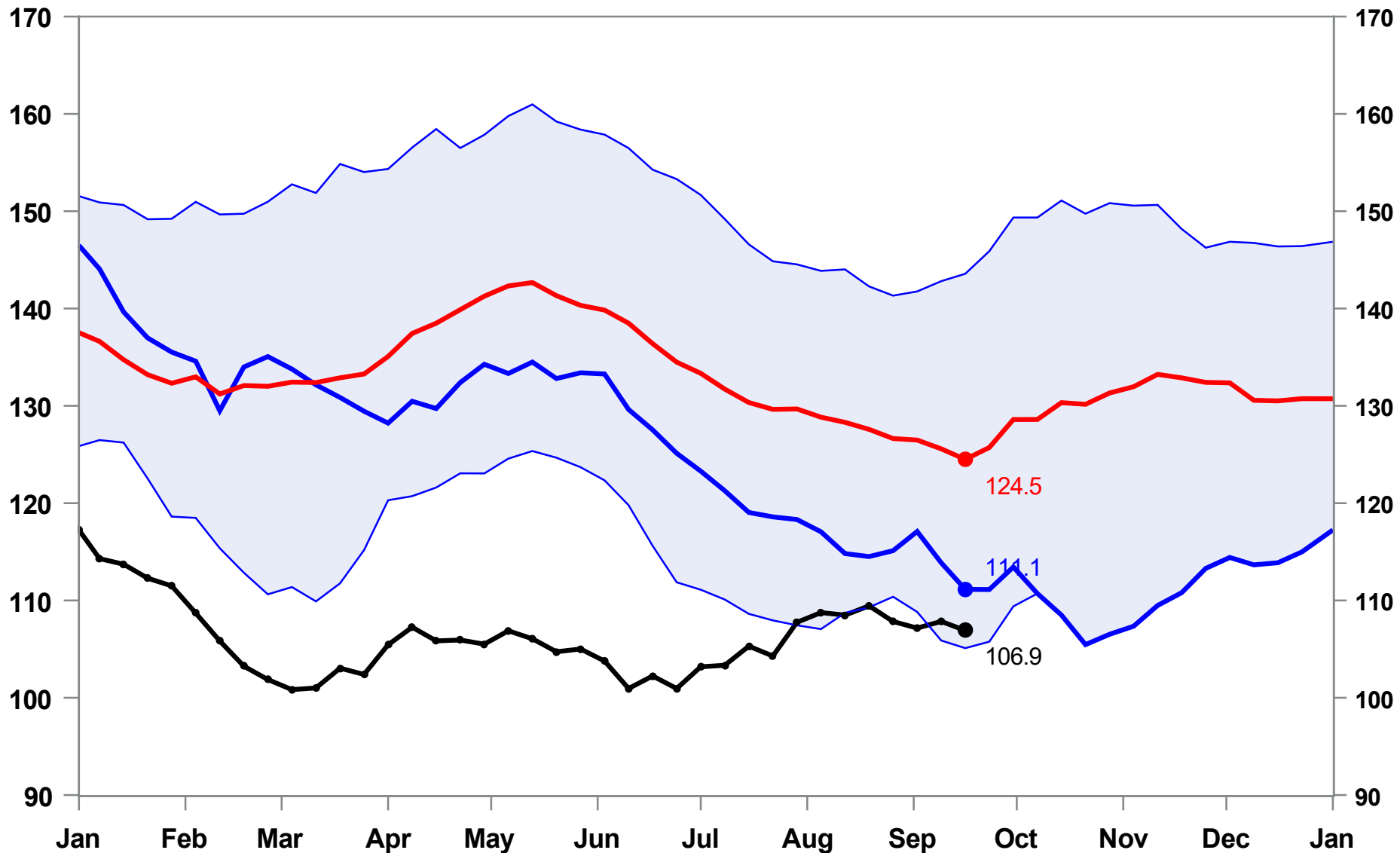
Week Ending: September 16, 2022

106.9 MMBBL

Week Change: -0.9 MMBBL

Last Year: 111.1

Five Year Average: 124.5



Source: EIA Fundamental Analytics

[www.fundamentalanalytics.com](http://www.fundamentalanalytics.com)

# PADD 3 Crude Stocks

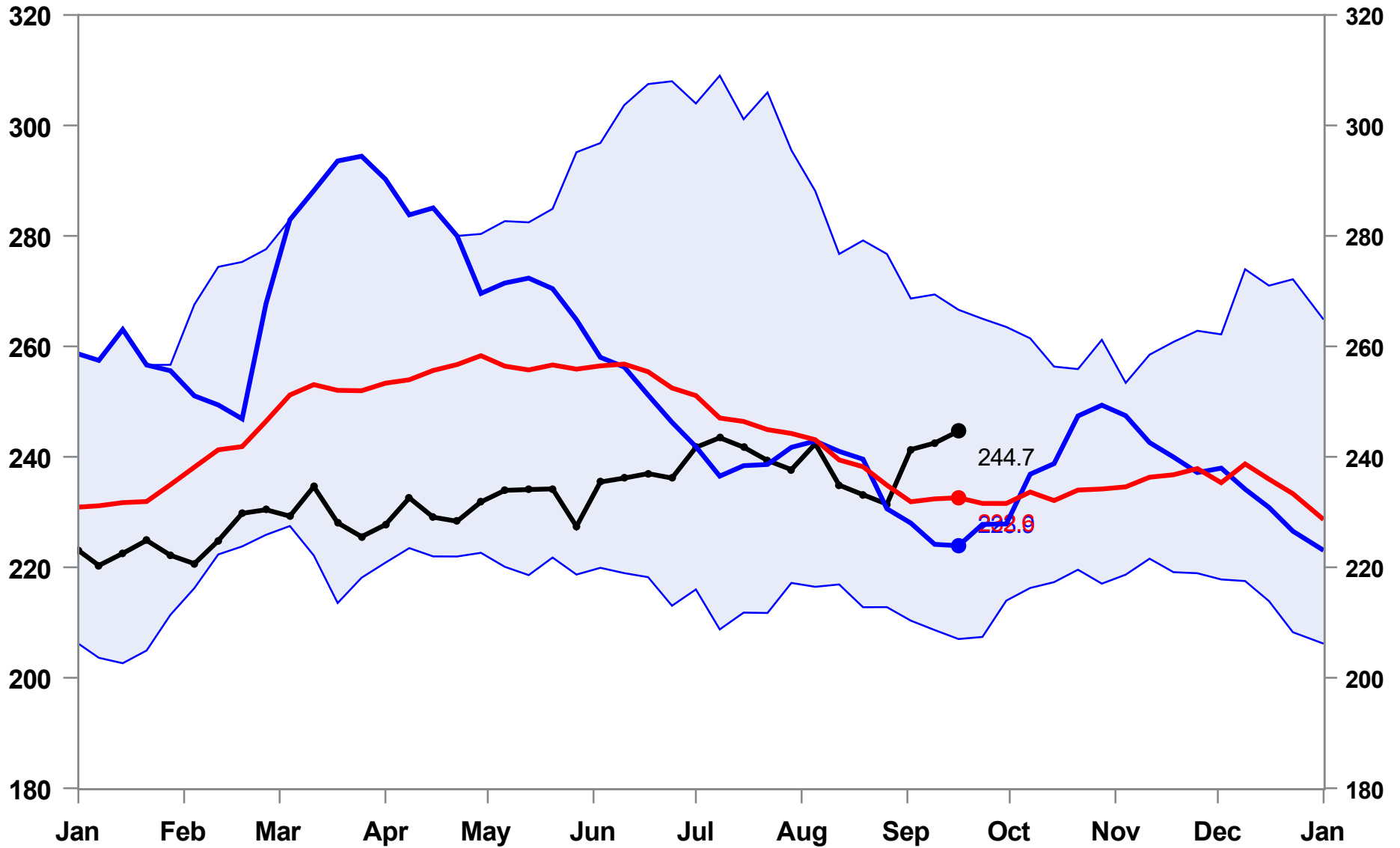
Week Ending: September 16, 2022

244.7 MMBBL

Week Change: 2.2 MMBBL

Last Year: 223.9

Five Year Average: 232.6



Source: EIA Fundamental Analytics

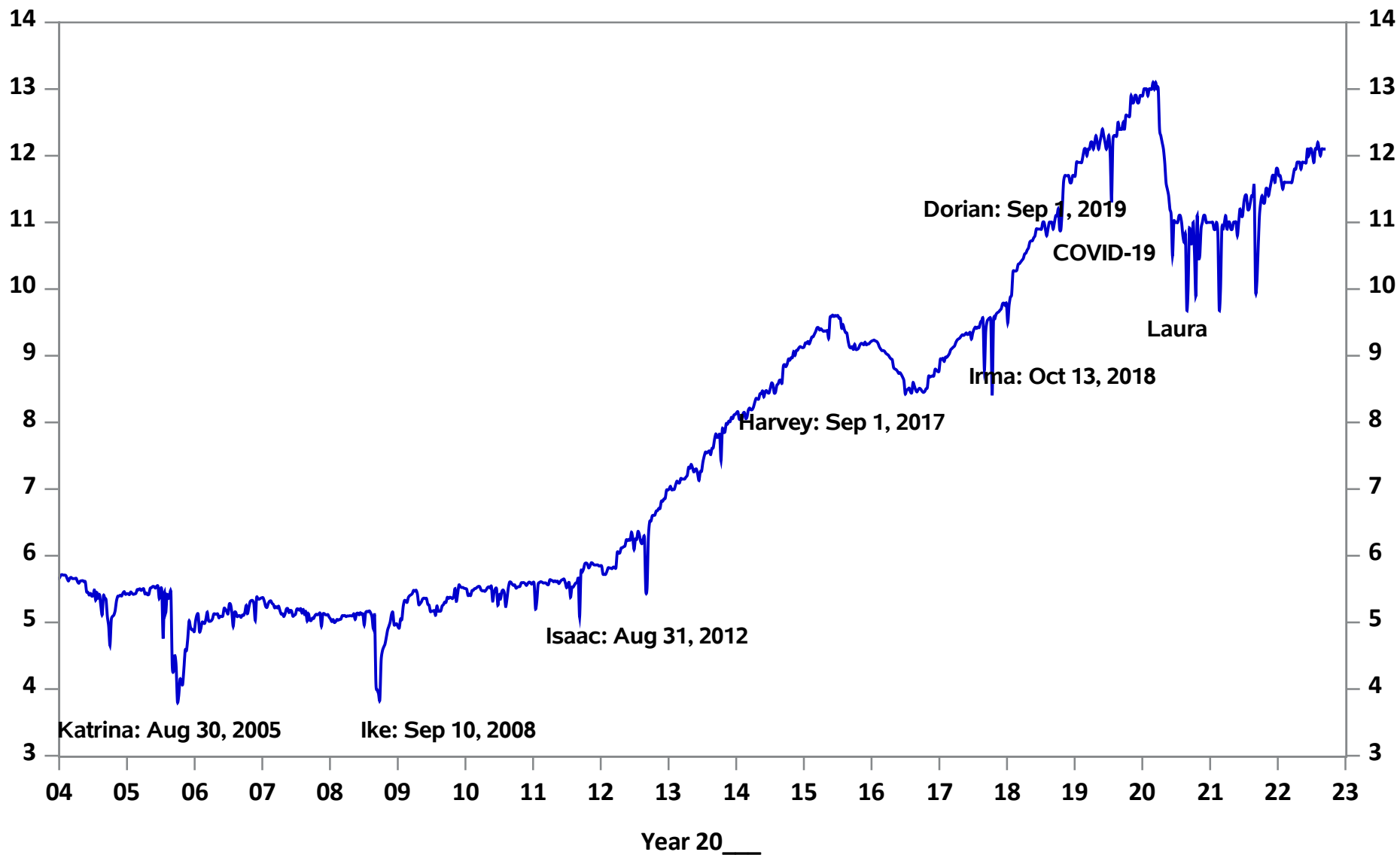
[www.fundamentalanalytics.com](http://www.fundamentalanalytics.com)

# Total Crude Oil Production

Week Ending: September 16, 2022

12.1 MMBBL

Week Change: 0.0 MMBBL



Source: EIA Fundamental Analytics

[www.fundamentalanalytics.com](http://www.fundamentalanalytics.com)



# Total Crude Days Forward Supply

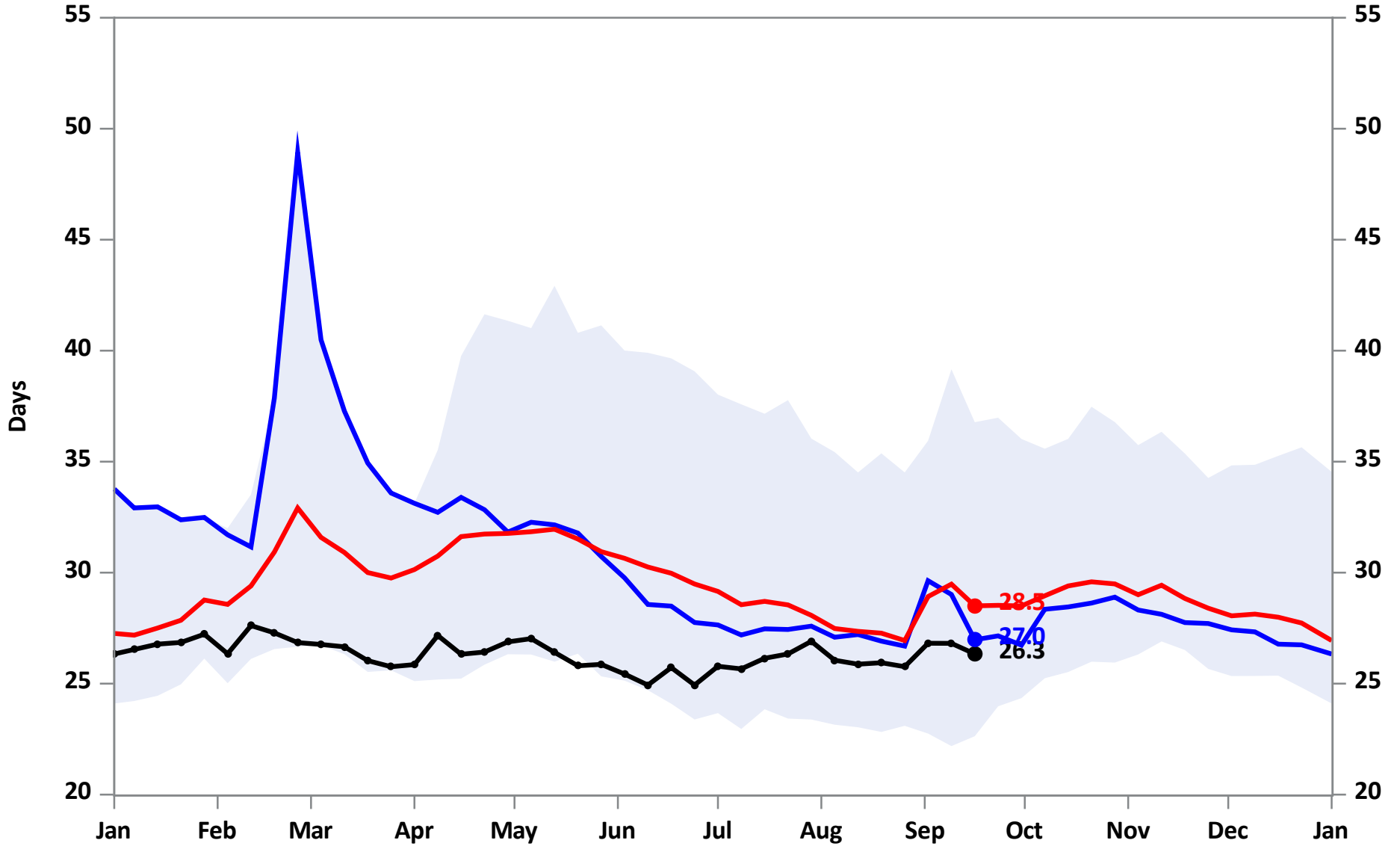
Week Ending: September 16, 2022

26.3 Days

Week Change: -0.5

Last Year: 27.0

Five Year Average: 28.5



Source: EIA Fundamental Analytics

[www.fundamentalanalytics.com](http://www.fundamentalanalytics.com)

# Total Petroleum Stocks

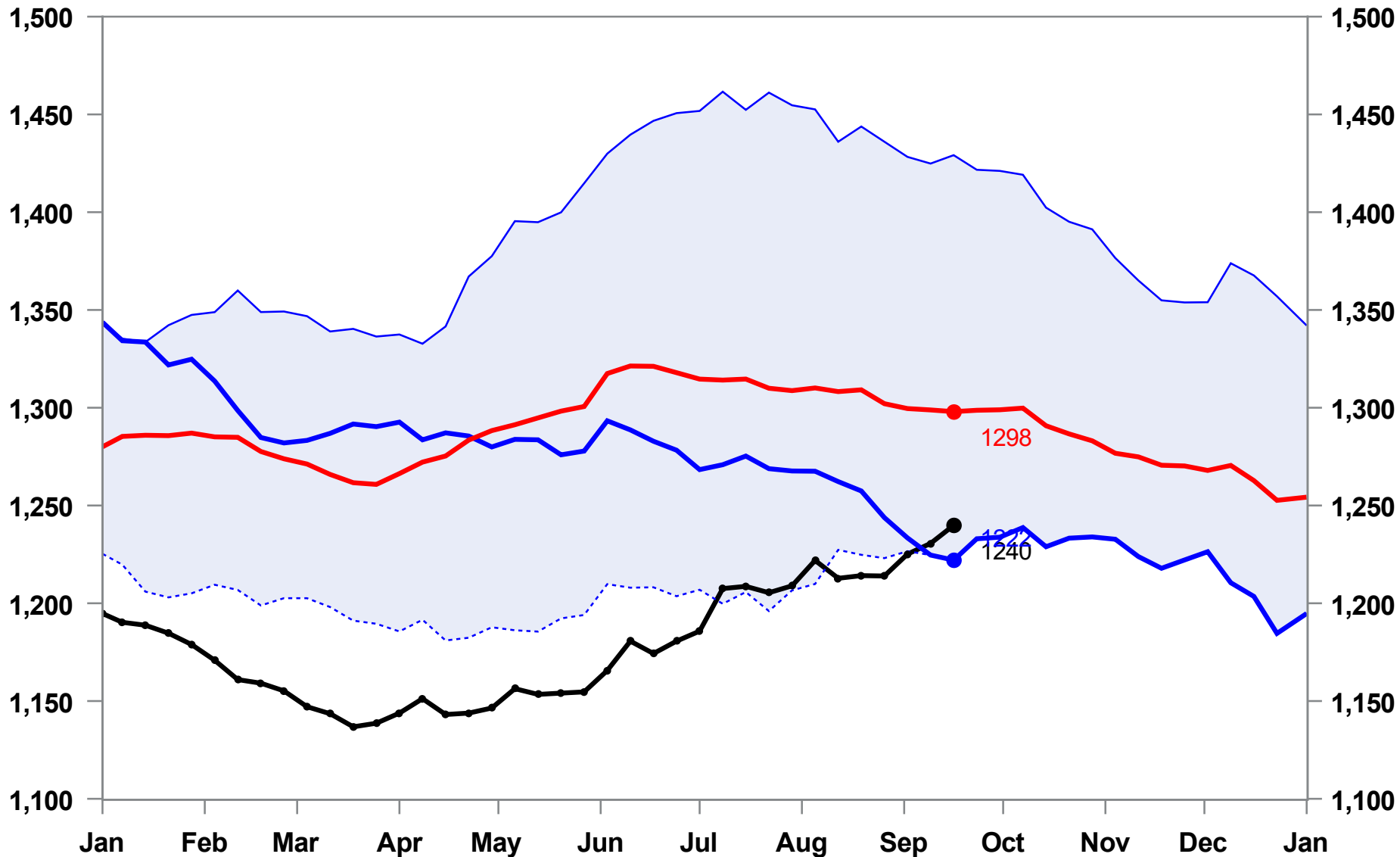
Week Ending: September 16, 2022

1,240 MMBBL

Week Change: 9.3 MMBBL

Last Year: 1,222

Five Year Average: 1298.0

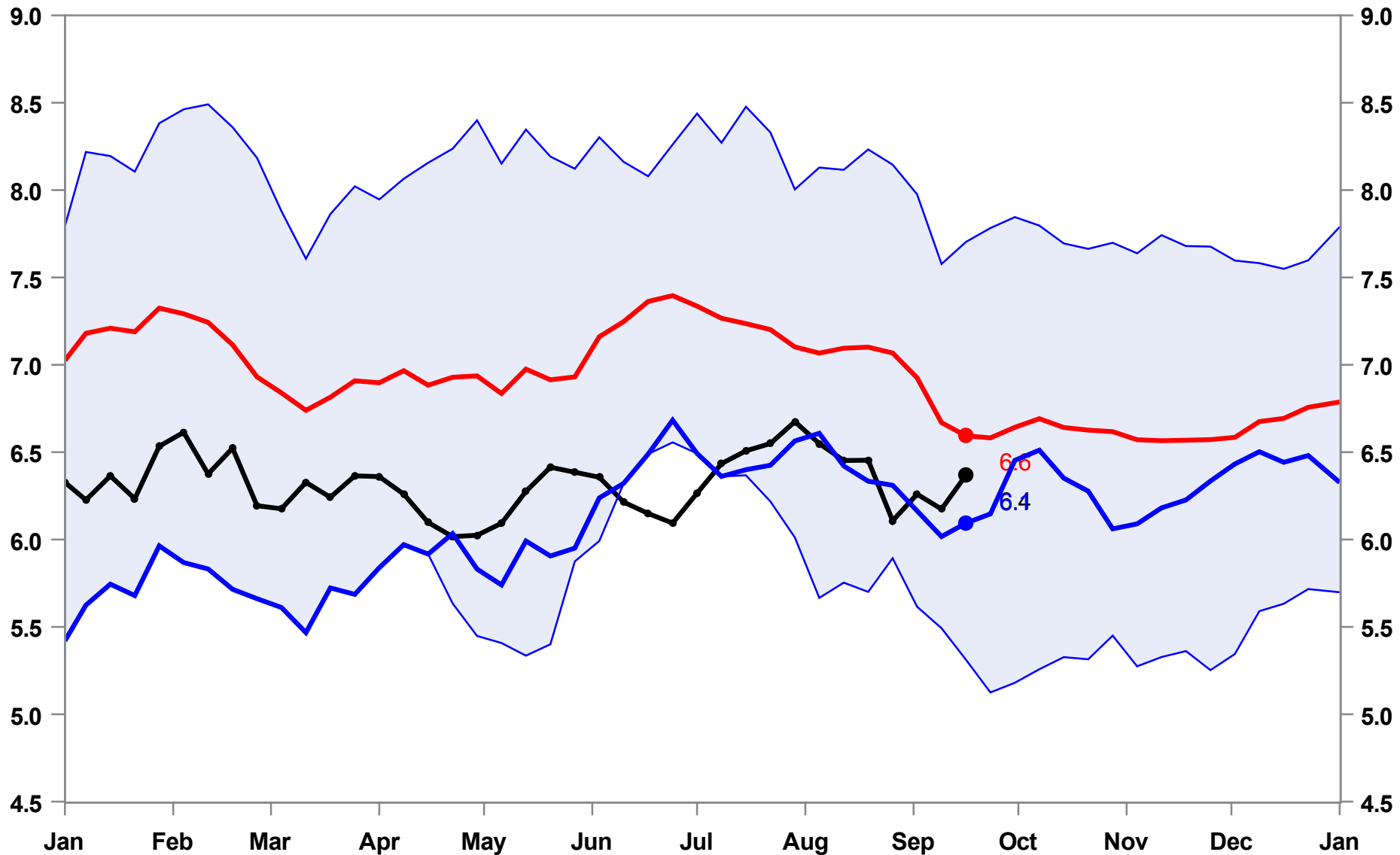


Source: EIA Fundamental Analytics

[www.fundamentalanalytics.com](http://www.fundamentalanalytics.com)

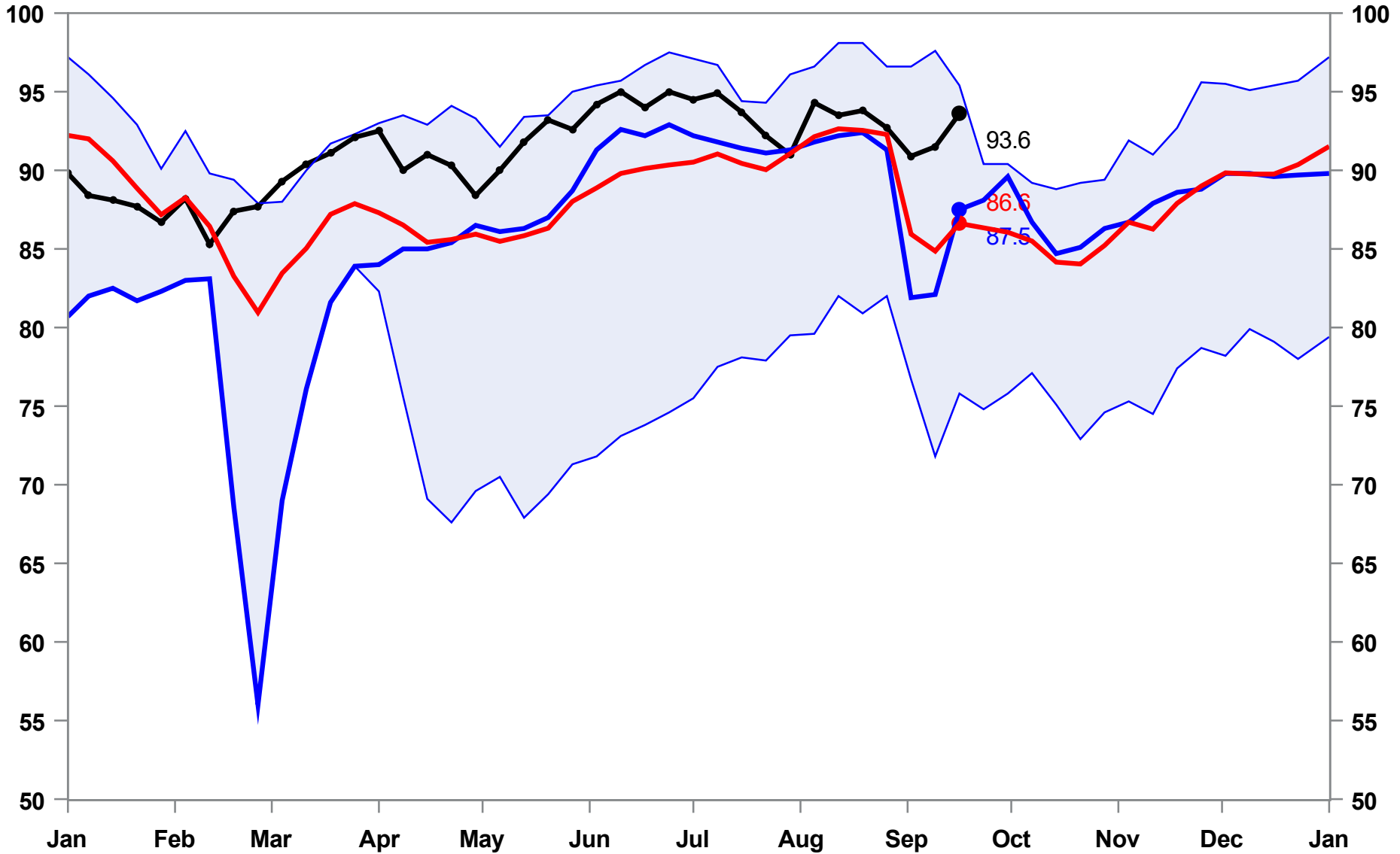
5-Year Average

2021 Data



5-Year Average

2021 Data



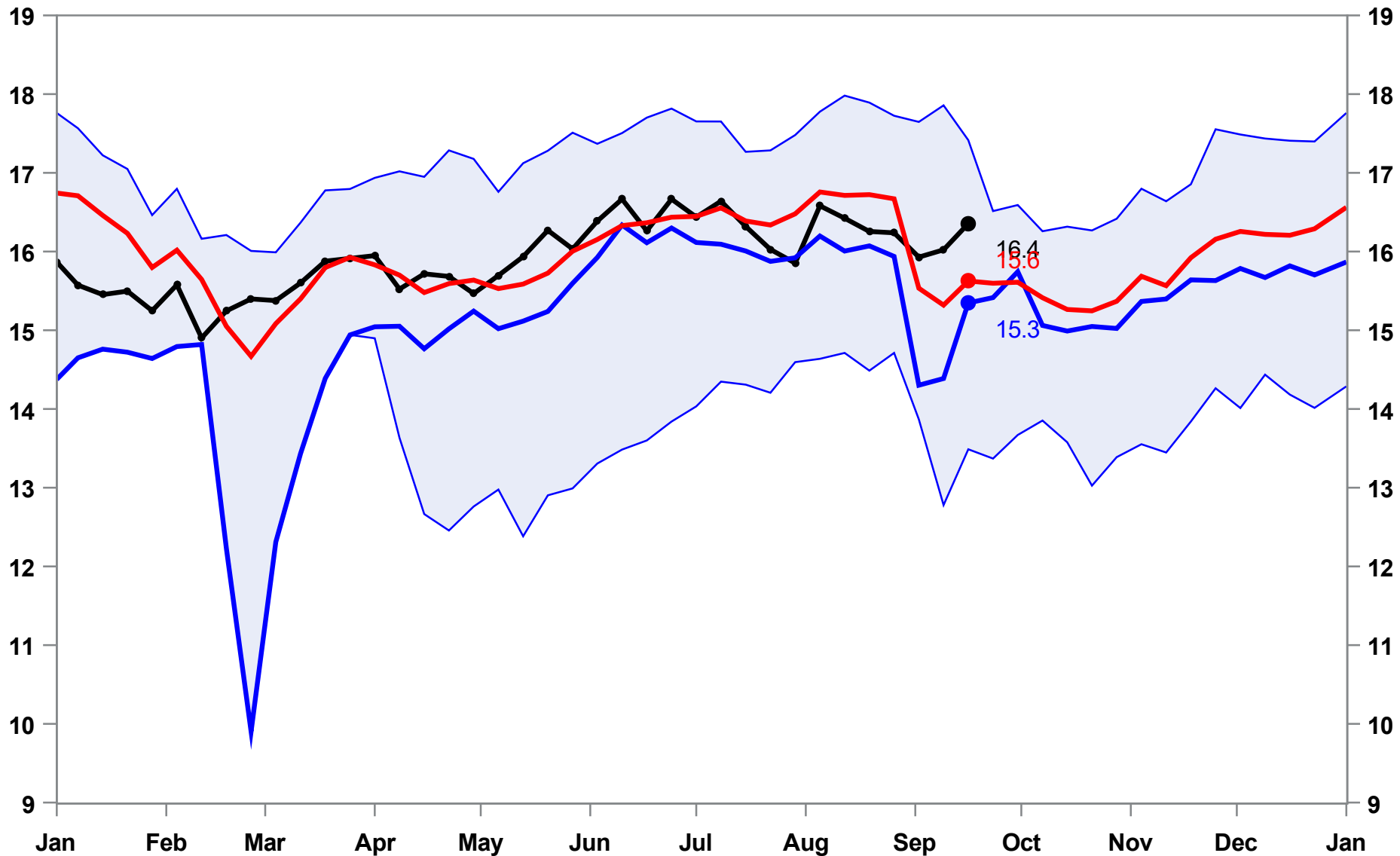
September 16, 2022

Crude Runs  
16.36 MMbbl

0.33 MMbbl Week Change

5-Year Average

2021 Data



Source: EIA Fundamental Analytics

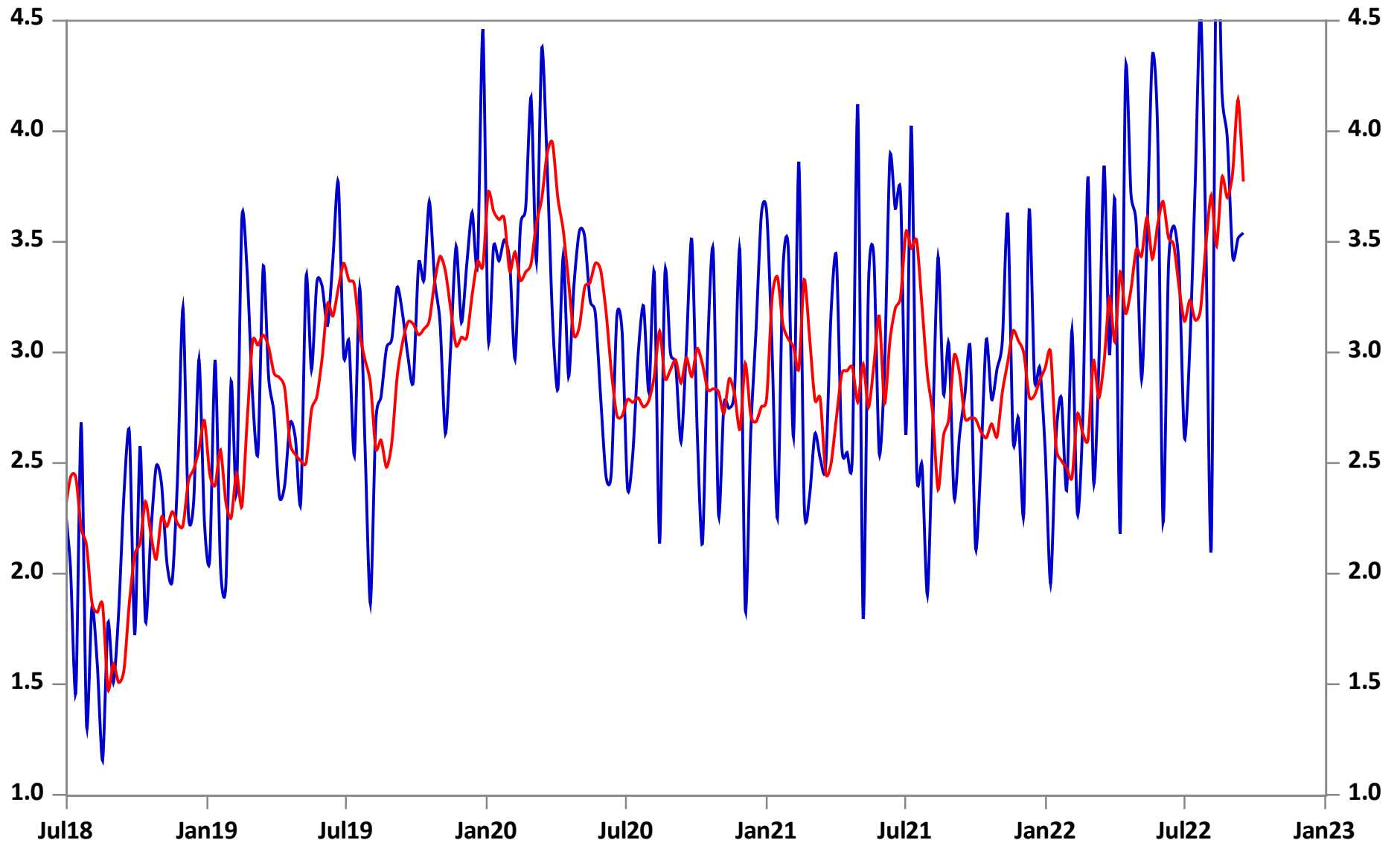
[www.fundamentalanalytics.com](http://www.fundamentalanalytics.com)

# Total Crude Oil Exports

3.5 MMBBL

Week Change: 25.0 MMBBL

Week Ending: September 16, 2022



Source: EIA Fundamental Analytics

[www.fundamentalanalytics.com](http://www.fundamentalanalytics.com)

**U.S. gasoline stocks increased by 1.6 million barrels to 214.6 million barrels, but still remain at lowest levels for the last 5 years.**

**The demand for gasoline is just not there, stocks and demand remain near 5-year lows.**

**(See pages 21, 23)**

# Total Gasoline Stocks

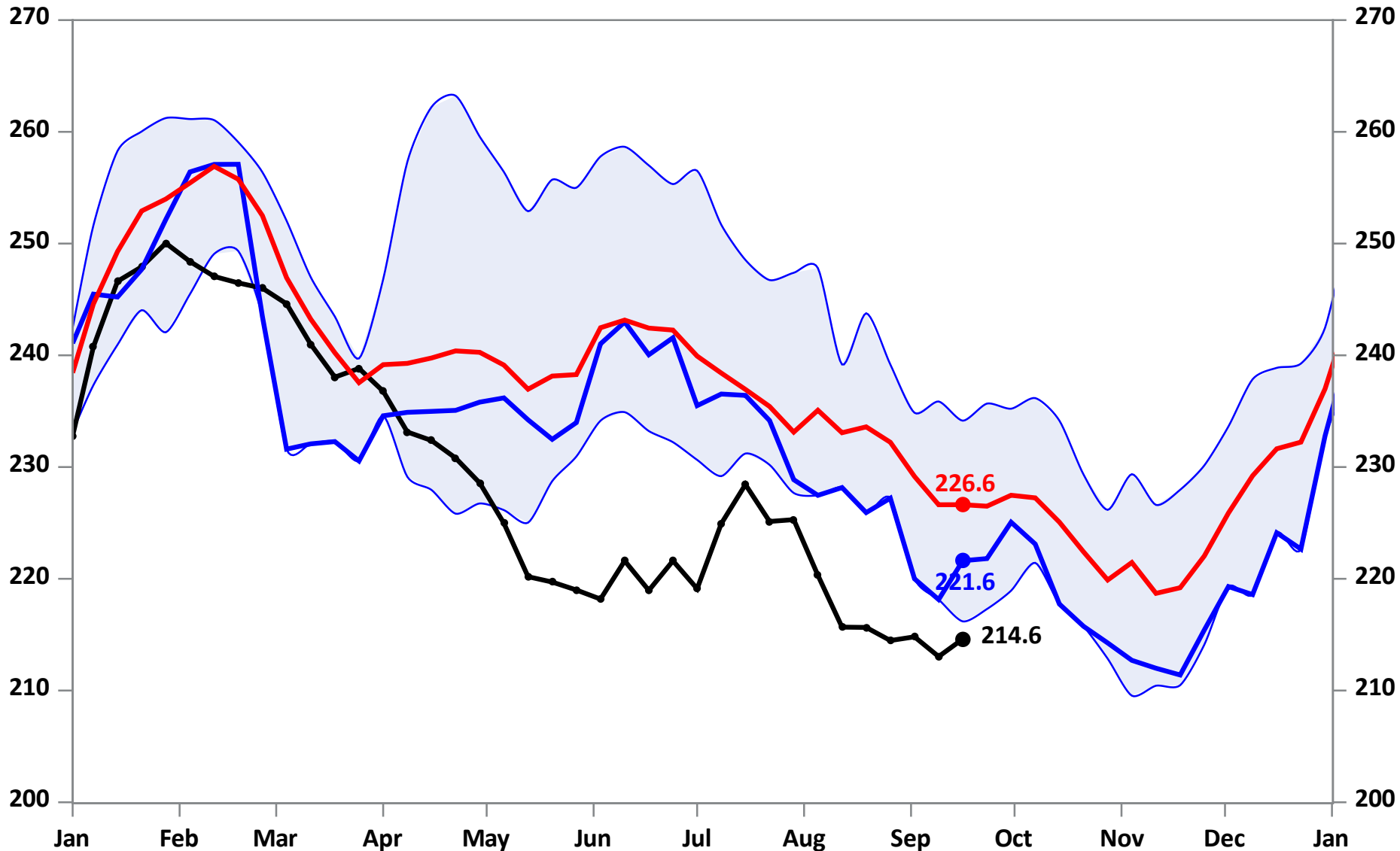
Week Ending: September 16, 2022

214.6 MMBBL

Week Change: 1.6 MMBBL

Last Year: 221.6

Five Year Average: 226.6



Source: EIA Fundamental Analytics

[www.fundamentalanalytics.com](http://www.fundamentalanalytics.com)



# Total Gasoline Production (4-Week Moving Average Smoothing)

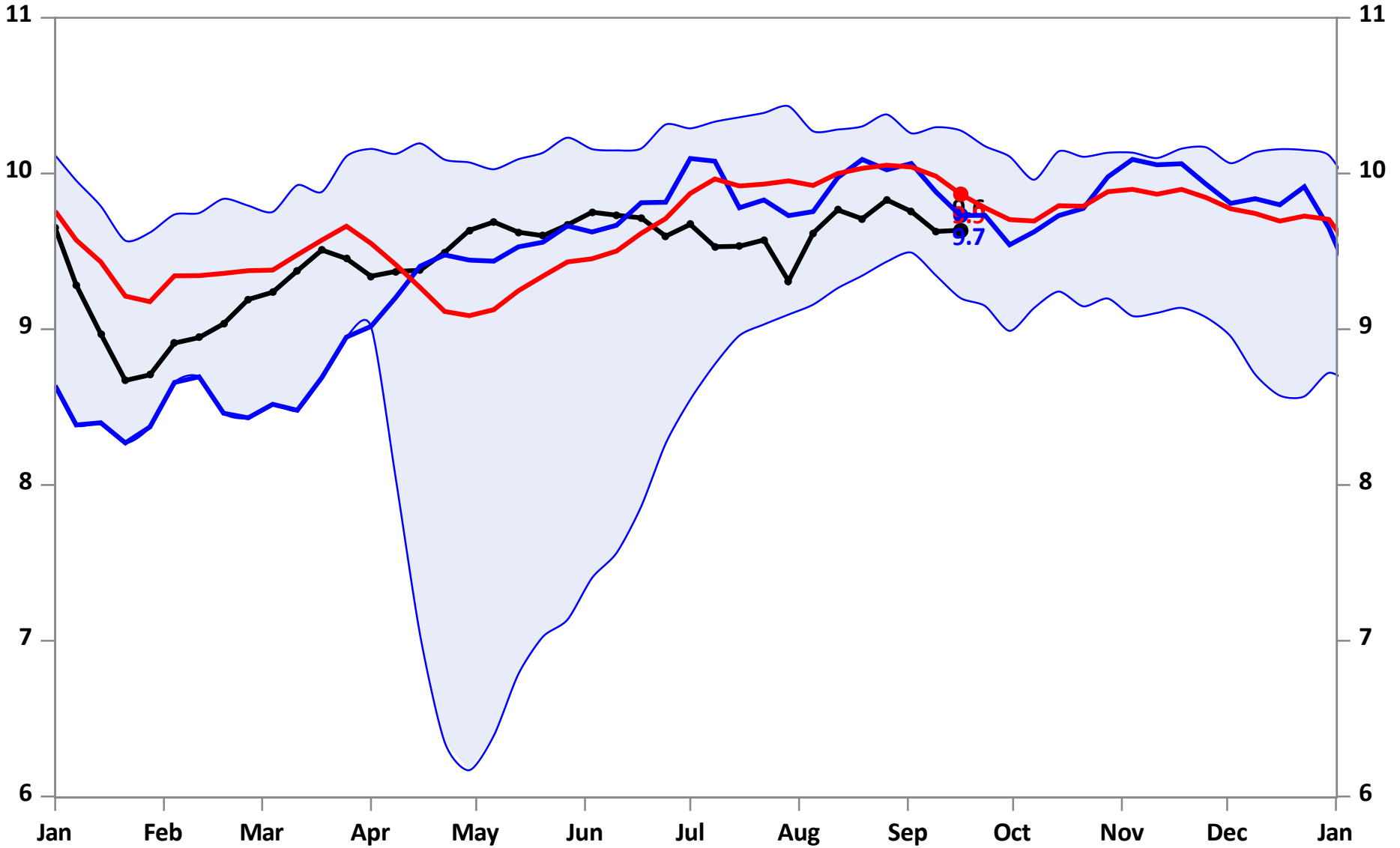
Week Ending: September 16, 2022

9.6 MMBBL/day

Week Change: 0.0 MMBBL

Last Year: 9.7

Five Year Average: 9.9



Source: EIA Fundamental Analytics

[www.fundamentalanalytics.com](http://www.fundamentalanalytics.com)

# Gasoline Demand (Smoothed with 4-Week Moving Average)

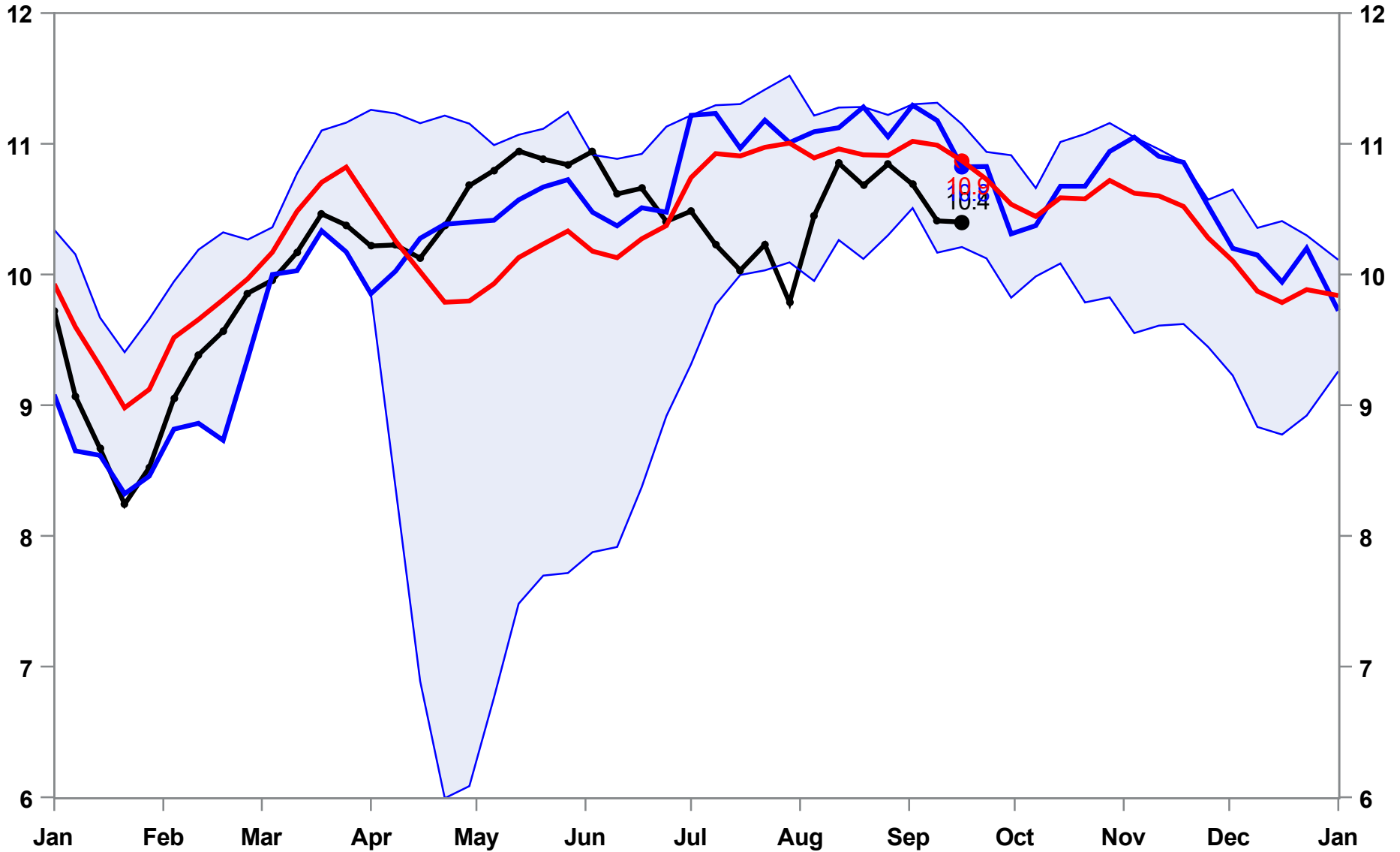
Week Ending: September 16, 2022

10.4 MMBBL/day

Week Change: -0.01 MMBBL

Last Year: 10.8

Five Year Average: 10.9



Source: EIA Fundamental Analytics

[www.fundamentalanalytics.com](http://www.fundamentalanalytics.com)

# Gasoline Days Forward Supply (Smoothed with 4-Week Moving Average)

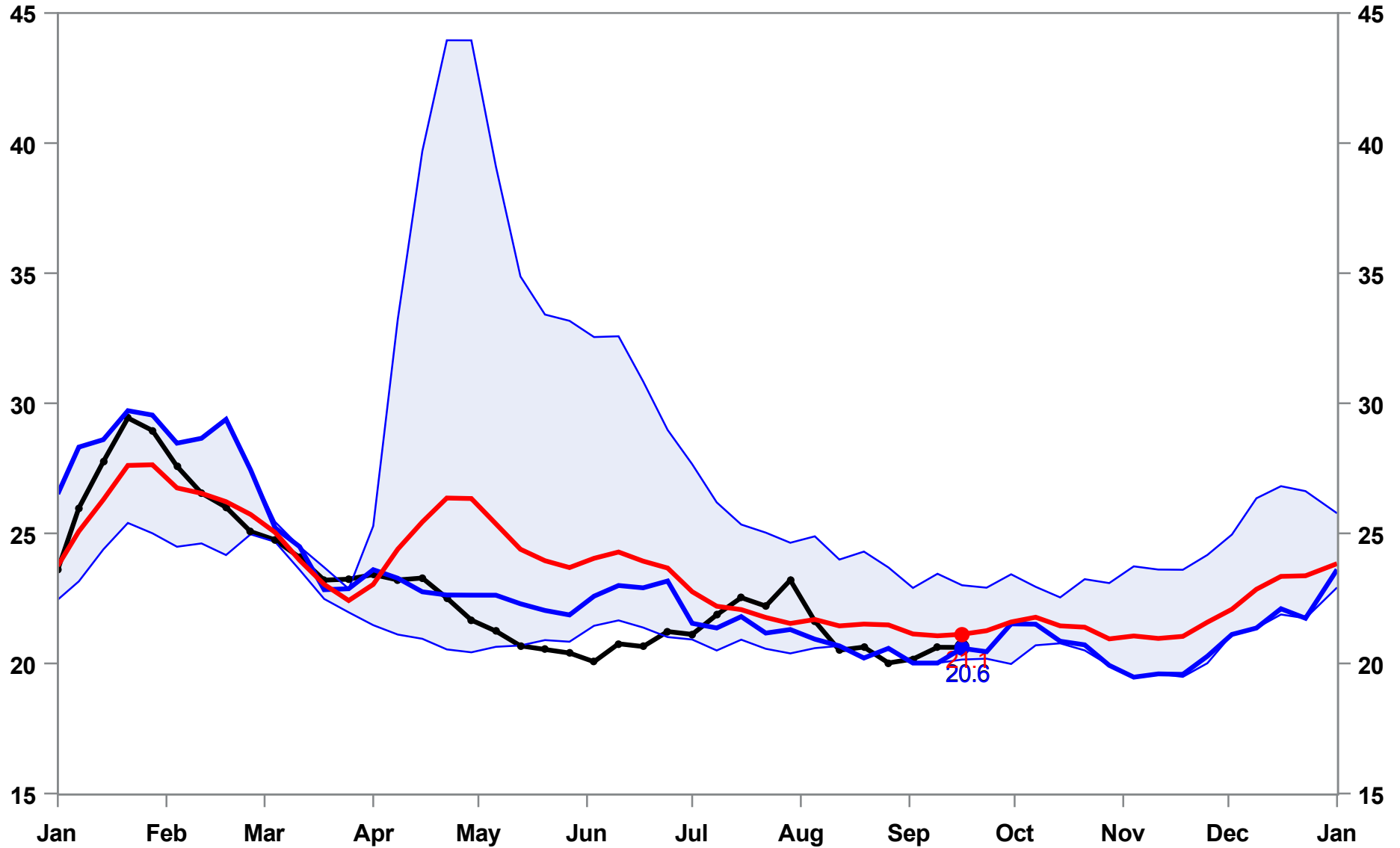
Week Ending: September 16, 2022

20.6 Days

Week Change: -0.01

Last Year: 20.6

Five Year Average: 21.1



Source: EIA Fundamental Analytics

[www.fundamentalanalytics.com](http://www.fundamentalanalytics.com)

**Distillates stocks increased by 1.2 million barrels to 117.3 million barrels (see page 28).**

**Distillates exports are now greater than the 5-Year maximum at 1.6 million barrels per day (see page 30).**

# Total Distillates Stocks

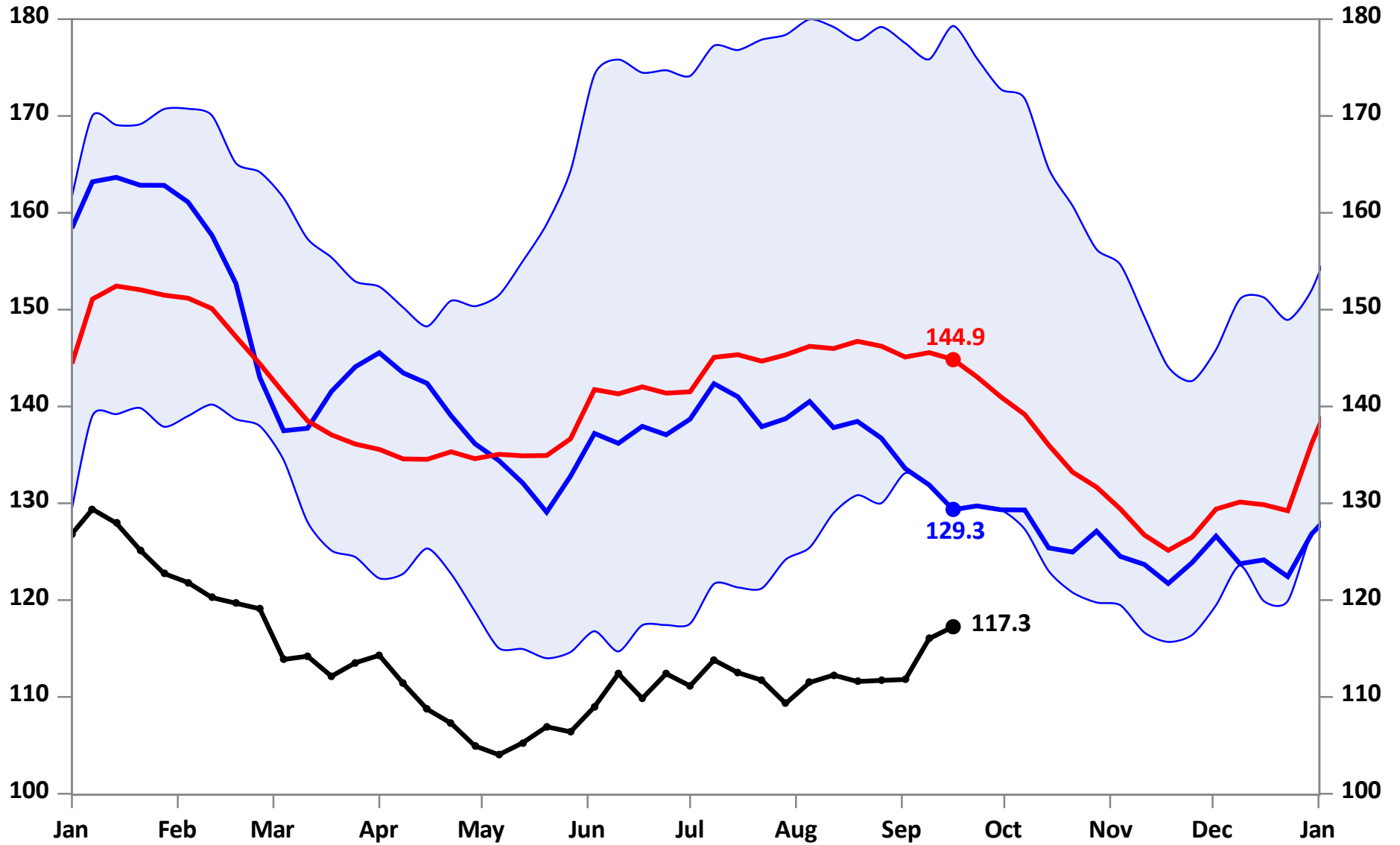
Week Ending: September 16, 2022

117.3 MMBBL

Week Change: 1.2 MMBBL

Last Year: -12.1

Five Year Average: 144.9



Source: EIA Fundamental Analytics

[www.fundamentalanalytics.com](http://www.fundamentalanalytics.com)

# Total Distillates Production (4-Week Moving Average Smoothing)

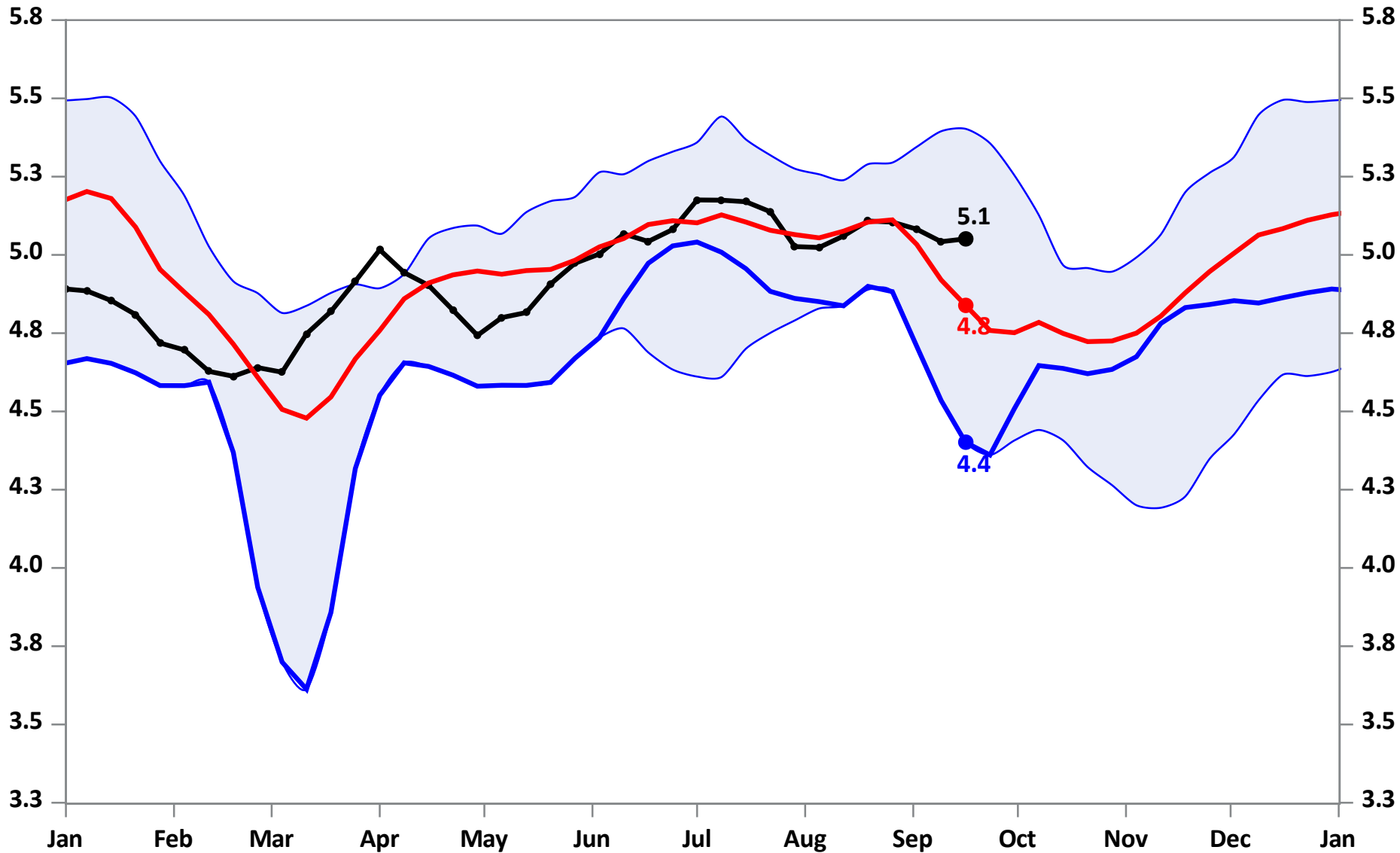
Week Ending: September 16, 2022

5.1 MMBBL/day

Week Change: 0.0 MMBBL

Last Year: 4.4

Five Year Average: 4.8



Source: EIA Fundamental Analytics

[www.fundamentalanalytics.com](http://www.fundamentalanalytics.com)

# Distillates Demand (Smoothed with 4-Week Moving Average)

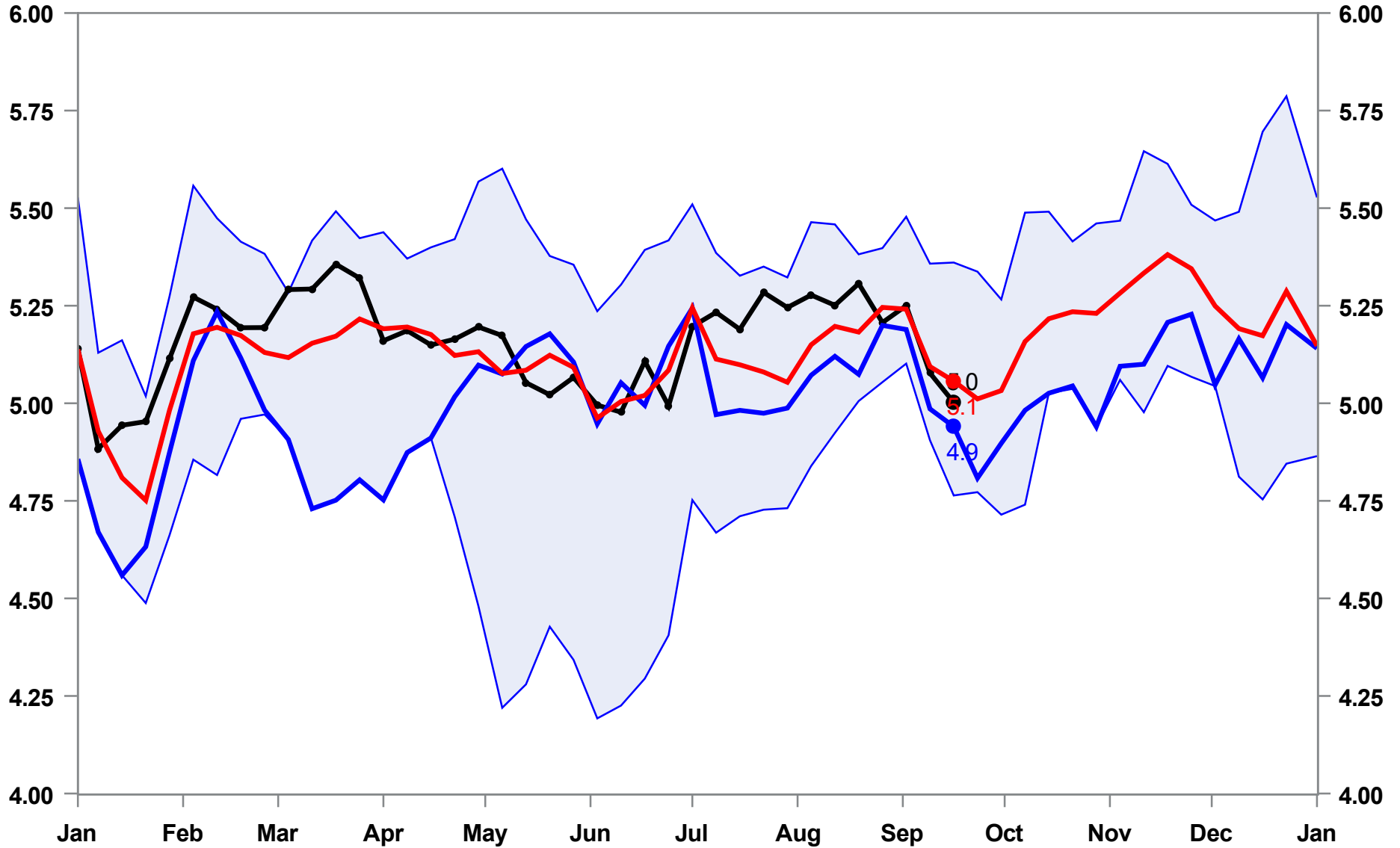
Week Ending: September 16, 2022

5.0 MMBBL/day

Week Change: -0.08 MMBBL

Last Year: 4.9

Five Year Average: 5.1



Source: EIA Fundamental Analytics

[www.fundamentalanalytics.com](http://www.fundamentalanalytics.com)

# Distillates Days Forward Supply (Smoothed with 4-Week Moving Average)

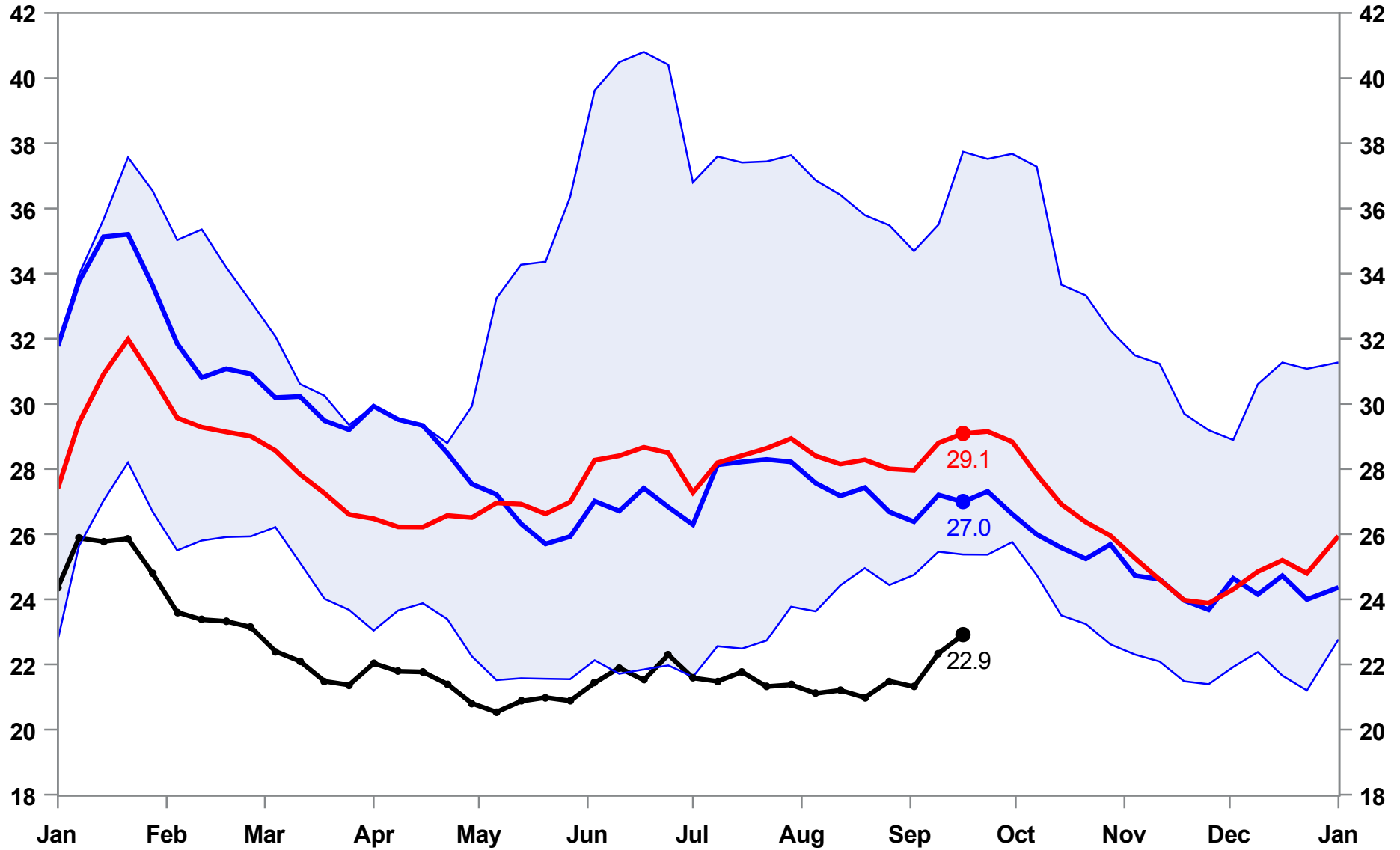
Week Ending: September 16, 2022

22.9 Days

Week Change: 0.57

Last Year: 27.0

Five Year Average: 29.1



Source: EIA Fundamental Analytics

[www.fundamentalanalytics.com](http://www.fundamentalanalytics.com)



# Total Distillates Exports (Smoothed with 4-Week Moving Average)

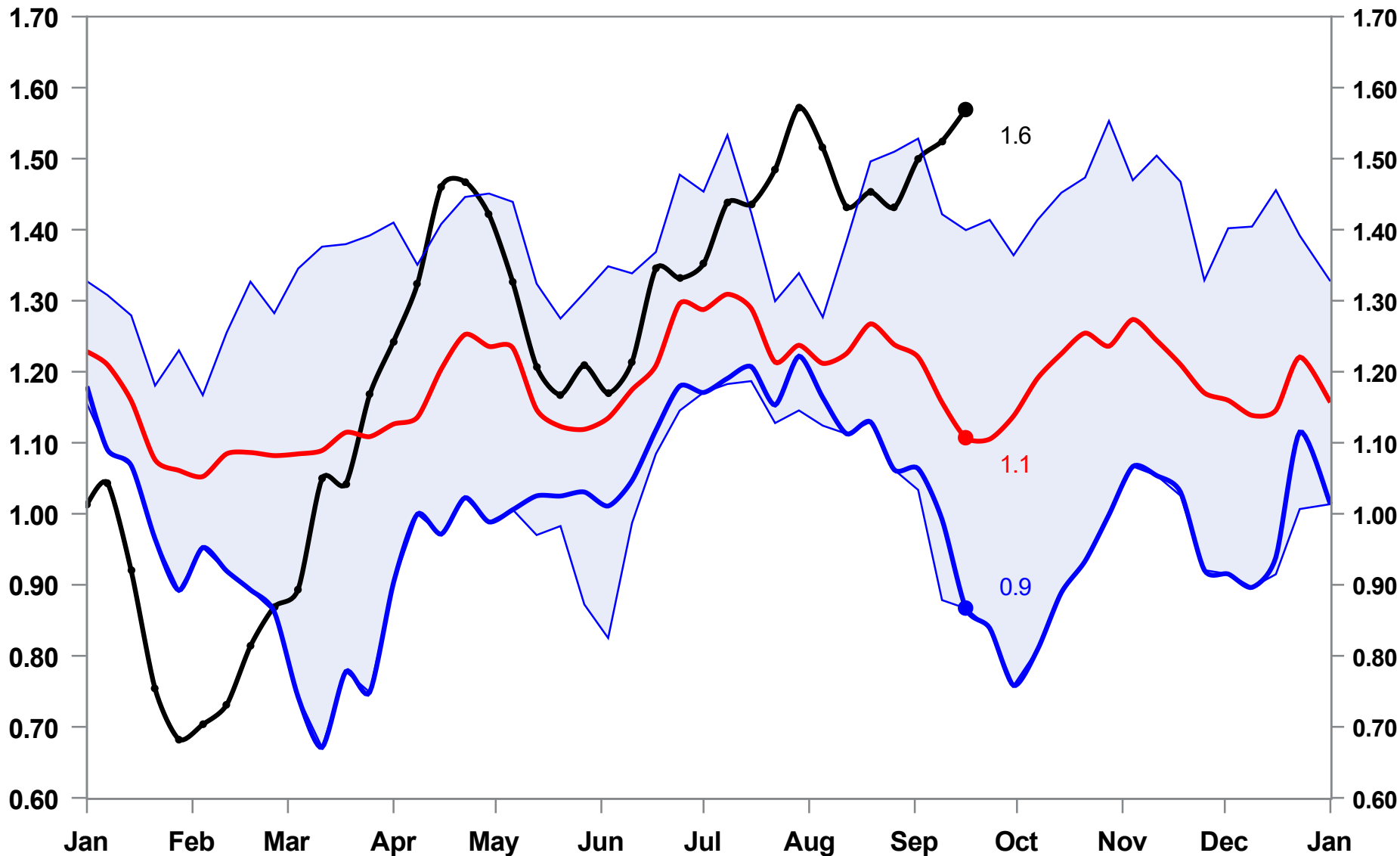
Week Ending: September 16, 2022

1.6 MMBBL

Week Change: 0.04 MMBBL

Last Year: 0.9

Five Year Average: 1.1



Source: EIA Fundamental Analytics

[www.fundamentalanalytics.com](http://www.fundamentalanalytics.com)