

## Natural Gas

### Withdrawal Greater than Expectations

The EIA reported a 109 Bcf storage withdrawal for the week ending January 10, 2019. The withdrawal was much less than the average for this week of the year, 174 Bcf and less than the average of expectations, 94 Bcf.

Storage at 3,039 Bcf is 506 Bcf above inventories for this time last year and 149 Bcf above the five-year average.

The withdraw was greater than expectations and the market jumped with the release of the report. However, this withdrawal for the first full week of January was very bearish compared to historical withdraws for this week of the year so the market collapsed and ended the day down about 4 cents. in January. Since 2010, the month of January produces between 3 to 4 draws of 100+ Bcf, while February typically produces 3 draws of 100+ Bcf. With increased production, sustained colder weather will be needed for draws of 100+ Bcf and for prices to rise.

To see what the FA platform can do for you [sign up](#) for a webinar and free trial on our website or contact one of our team members.

### Benefits of FA:

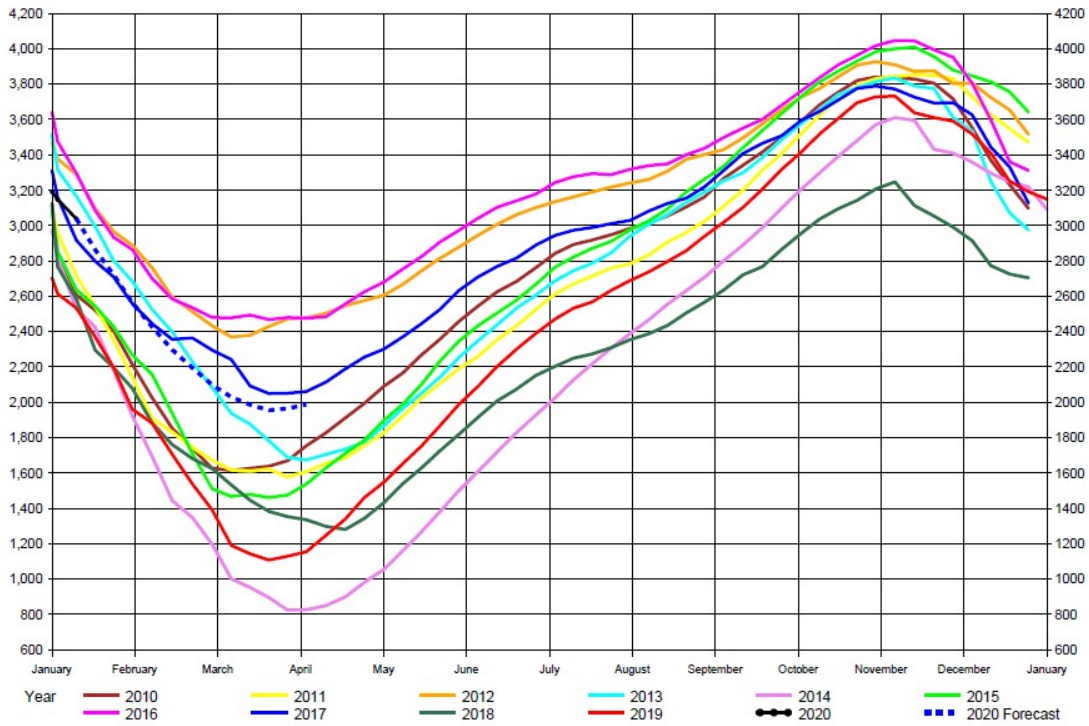
- Easy to use, web-based and menu driven platform.
- Extensive history of data.
- Superior graphing capabilities
- Competitively priced.

We would be happy to discuss this commentary with you and provide additional market insights. Feel free to call us at 312-348-7518 or email us at [joel.fingerman@fundamentalanalytics.com](mailto:joel.fingerman@fundamentalanalytics.com).

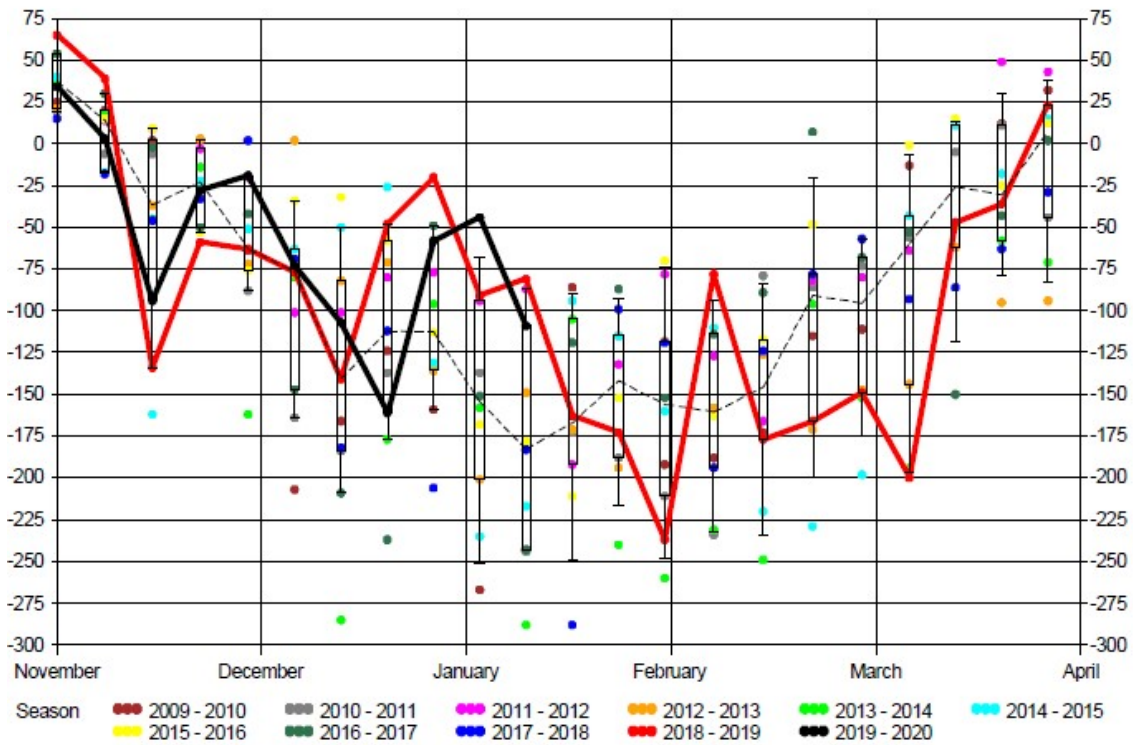
## EIA Weekly Natural Gas Storage Data Report

As of Friday, January 10, 2020

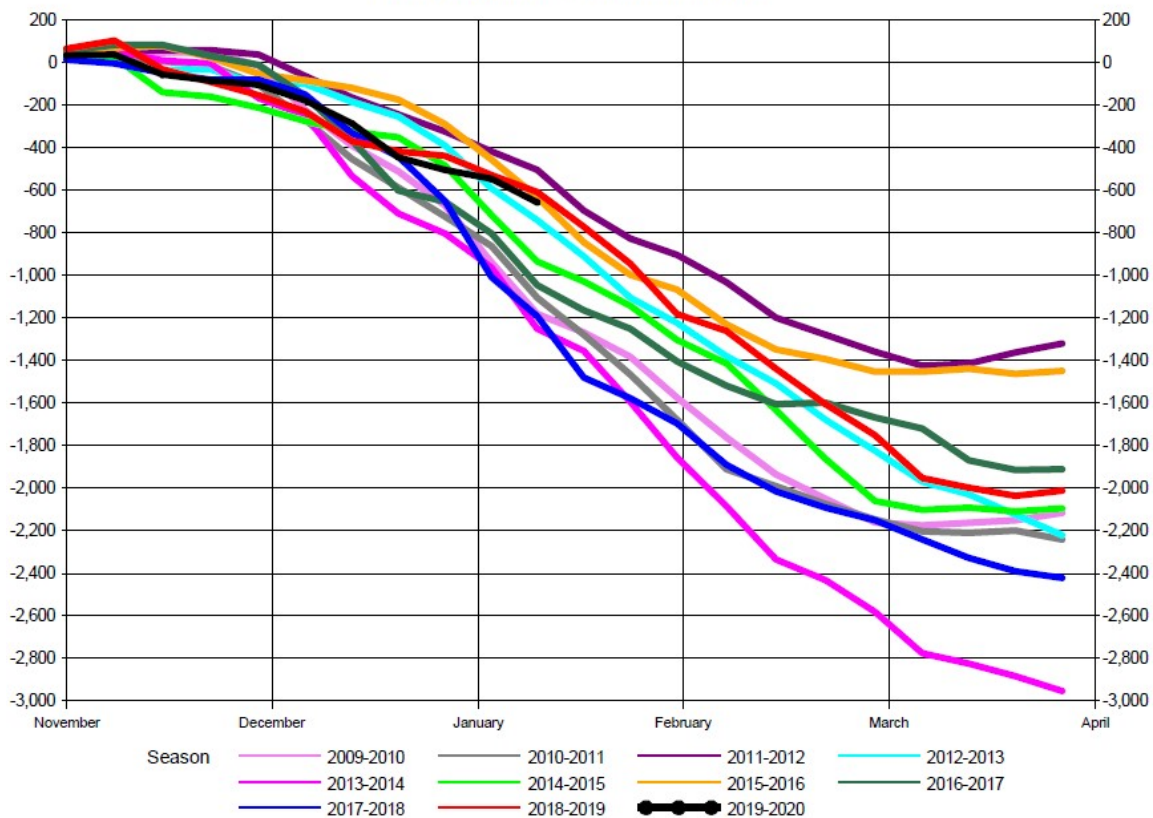
	Bcf in Storage	Week Change	Last Week Storage	Week Change	Last Year Storage
East Region	716	-40	756	-15	620
Midwest Region	851	-34	885	-20	729
Mountain Region	161	-5	166	-7	127
Pacific Region	235	-9	244	-7	196
South Region	1,076	-21	1,097	4	861
U. S. Total Storage	3,039	-109	3,148	-44	2,533



EIA Withdrawal Season - Total Working Gas  
 Withdrawal Distribution (Bcf)  
 Latest Weekly Data as of: Friday, January 10, 2020 -109 (Bcf)



Total EIA Cumulative Storage Withdrawal (Bcf)



For more insights and analysis or to find out about our free trial offer, go to [www.fundamentalanalytics.com](http://www.fundamentalanalytics.com)

Follow us on Twitter [@fundanalytics](https://twitter.com/fundanalytics) or on [LinkedIn](https://www.linkedin.com/company/fundamentalanalytics)

Regards,  
The Fundamental Analytics Team

Company Name | [Website](#)

