



Discover the Pattern, Anticipate the Future

EIA INSIGHTS November 27, 2019

## Natural Gas

### Withdrawal Near Expectations

The EIA reported a 28 Bcf storage withdrawal for the week ending November 22, 2019. The withdrawal was at the average for this week of the year and close to the average of expectations, 27 Bcf.

Storage at 3,610 Bcf is 556 Bcf above inventories for this time last year and 31 Bcf below the five-year average.

Weather forecasts will continue to be the main driver of prices and volatility.

To see what the FA platform can do for you [sign up](#) for a webinar and free trial on our website or contact one of our team members.

### Benefits of FA:

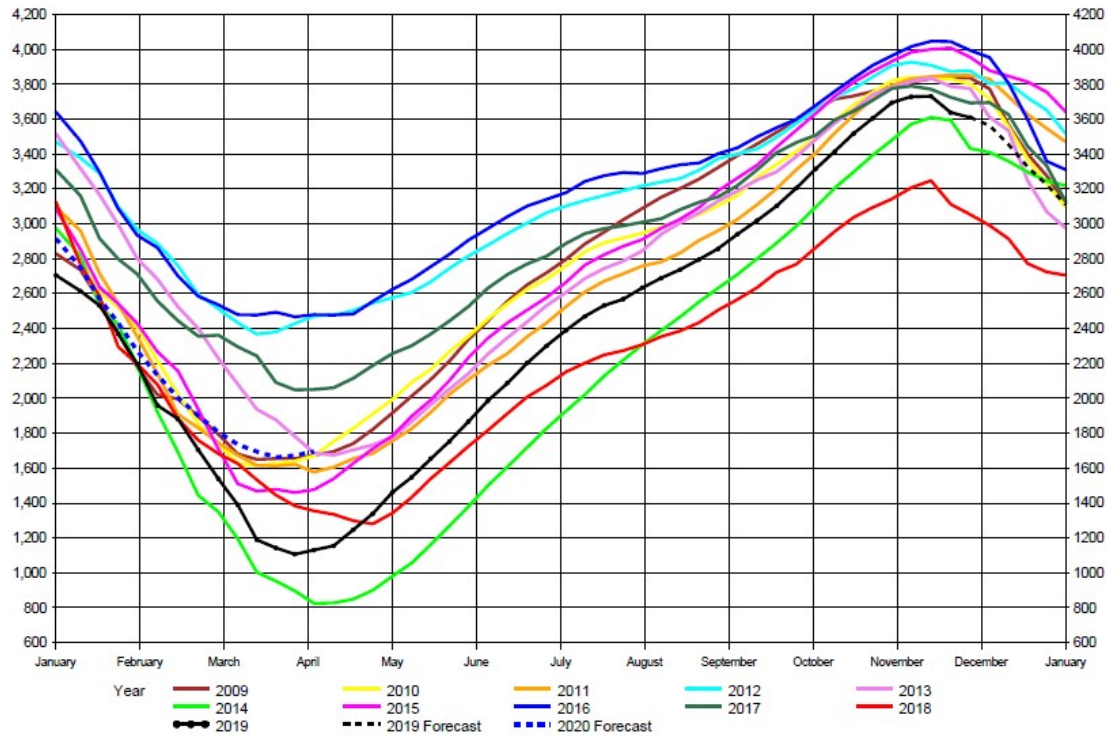
- Easy to use, web-based and menu driven platform.
- Extensive history of data.
- Superior graphing capabilities
- Competitively priced.

We would be happy to discuss this commentary with you and provide additional market insights. Feel free to call us at 312-348-7518 or email us at [joel.fingerman@fundamentalanalytics.com](mailto:joel.fingerman@fundamentalanalytics.com).

## EIA Weekly Natural Gas Storage Data Report

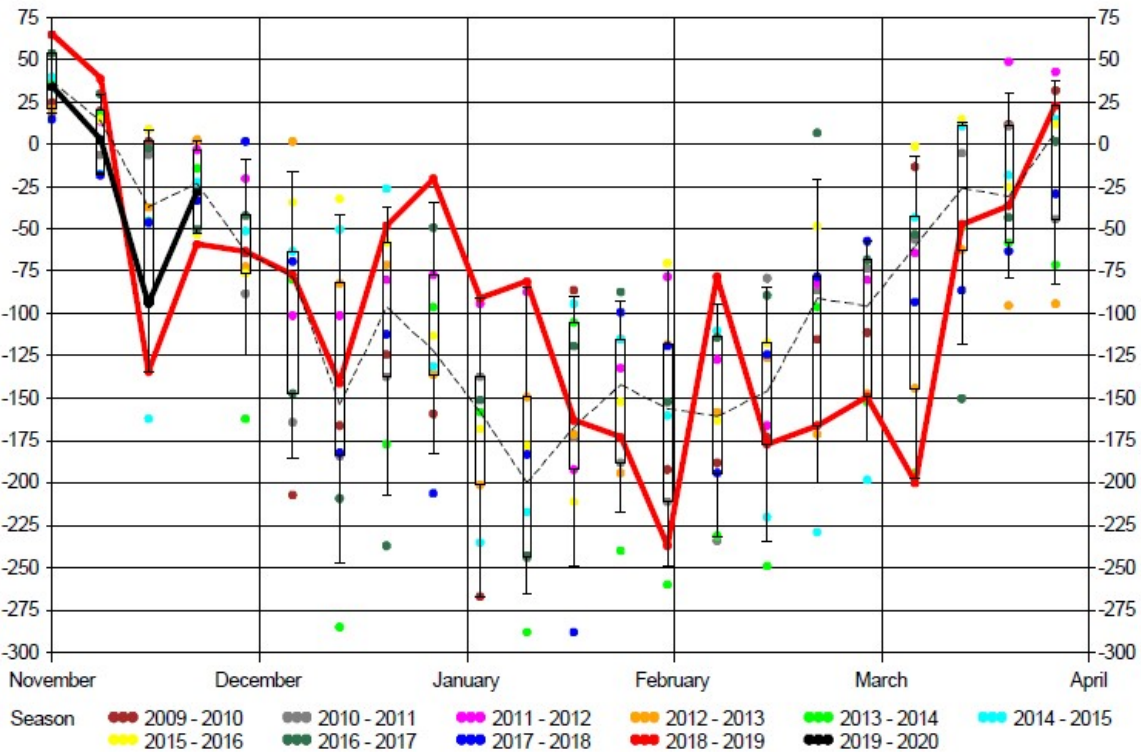
As of Friday, November 22, 2019

	Bcf in Storage	Week Change	Last Week Storage	Week Change	Last Year Storage
East Region	894	-15	909	-23	778
Midwest Region	1,052	-17	1,069	-37	938
Mountain Region	204	-1	205	-2	171
Pacific Region	293	1	292	2	254
South Region	1,166	2	1,164	-33	914
U. S. Total Storage	3,610	-28	3,638	-94	3,054

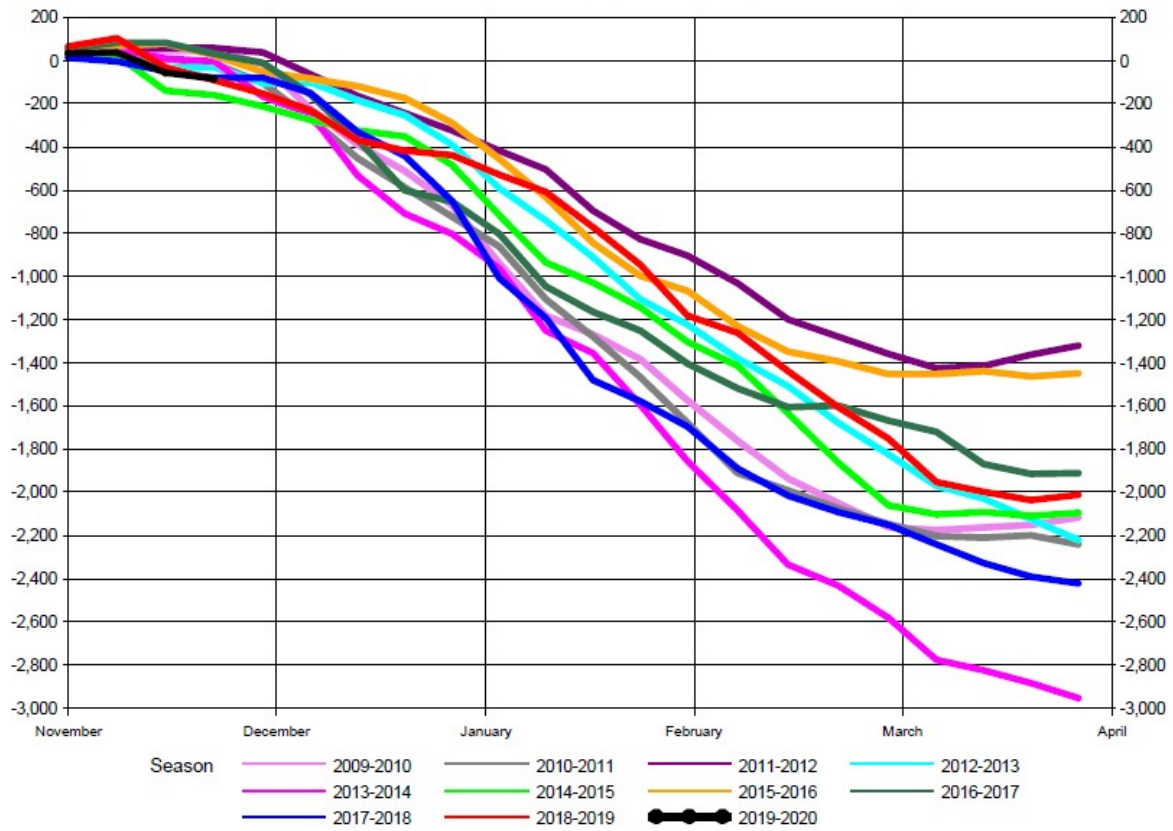


EIA Withdrawal Season - Total Working Gas  
 Withdrawal Distribution (Bcf)

Latest Weekly Data as of: Friday, November 22, 2019 -28 (Bcf)



Total EIA Cumulative Storage Withdrawal (Bcf)



For more insights and analysis or to find out about our free trial offer, go to

[www.fundamentalanalytics.com](http://www.fundamentalanalytics.com)

Follow us on Twitter [@fundanalytics](#) or on [LinkedIn](#)

Regards,  
The Fundamental Analytics Team

Company Name | [Website](#)

